



# Phomemo M08FS Computer Printing With Data Cable User Manual

[Home](#) » [Phomemo](#) » Phomemo M08FS Computer Printing With Data Cable User Manual 

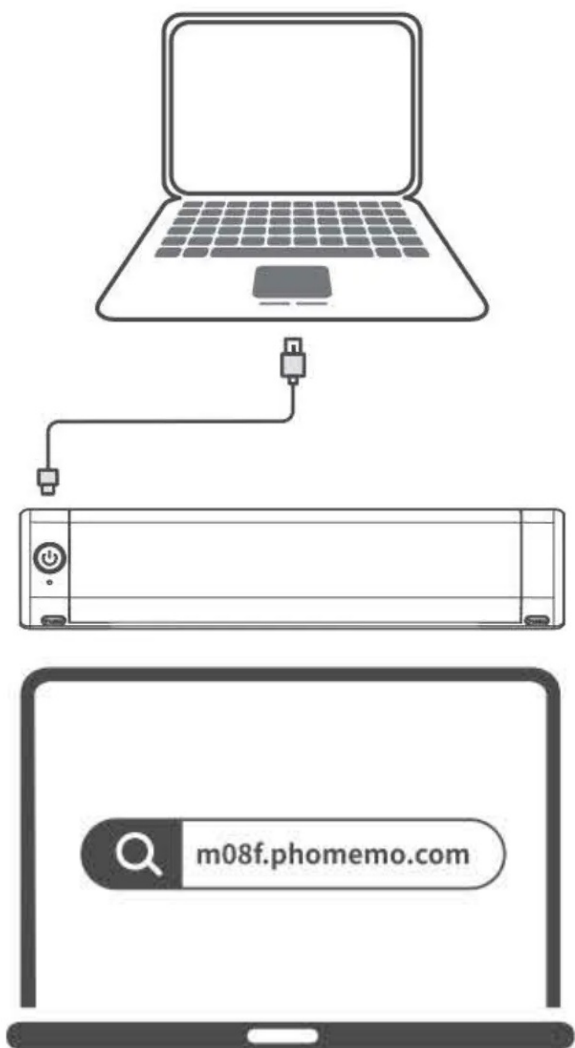
## Contents

- [1 Phomemo M08FS Computer Printing With Data Cable User Manual](#)
- [2 Computer Printing with Date Cable](#)
- [3 Smartphone-controlled](#)
- [4 Read More About This Manual & Download PDF:](#)
- [5 Documents / Resources](#)
  - [5.1 References](#)

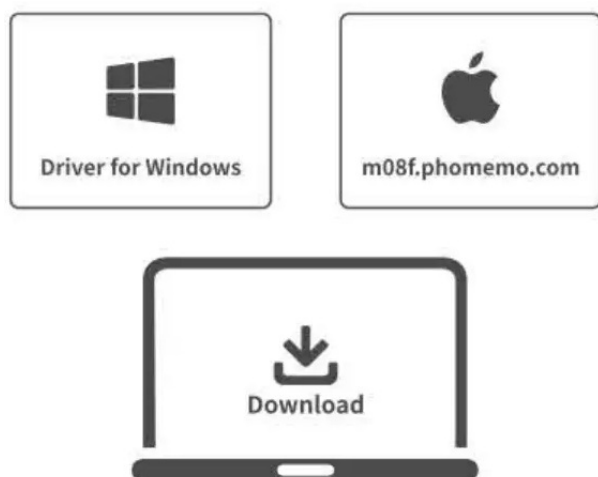
## Phomemo M08FS Computer Printing With Data Cable User Manual



## Computer Printing with Date Cable



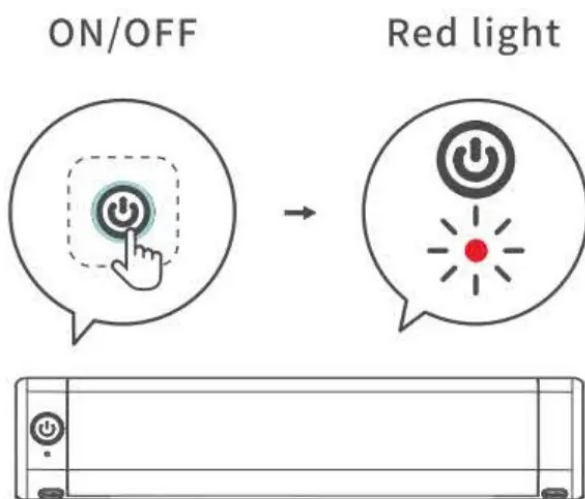
Open the link: [m08f.phomemo.com](https://m08f.phomemo.com)



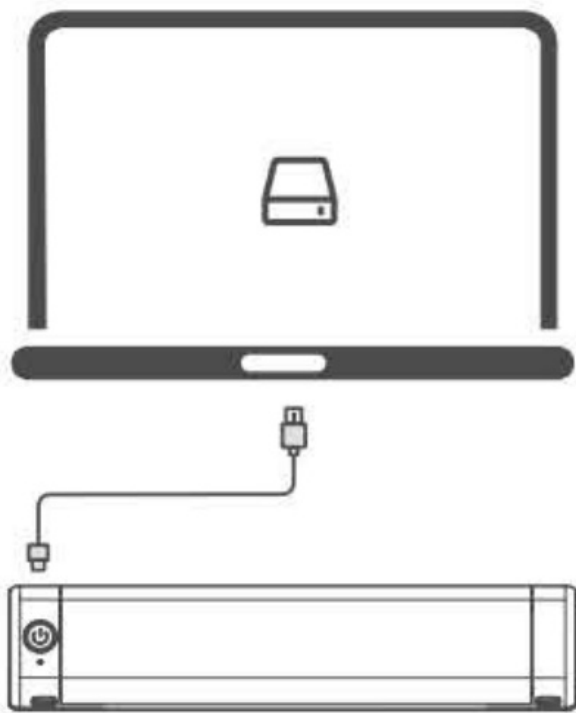
Download the corresponding drive for your computer system



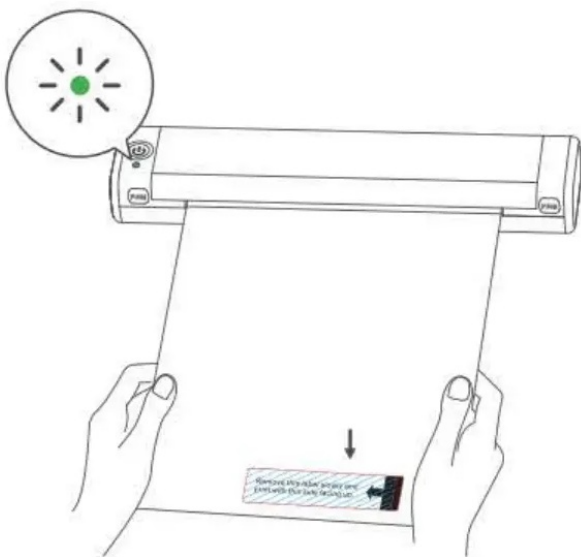
Click the next button



Press and hold for 3s to turn on the MOSF printer



Connect the printer to your computer with a Type-C data cable



Please remove this label and print with this side facing up

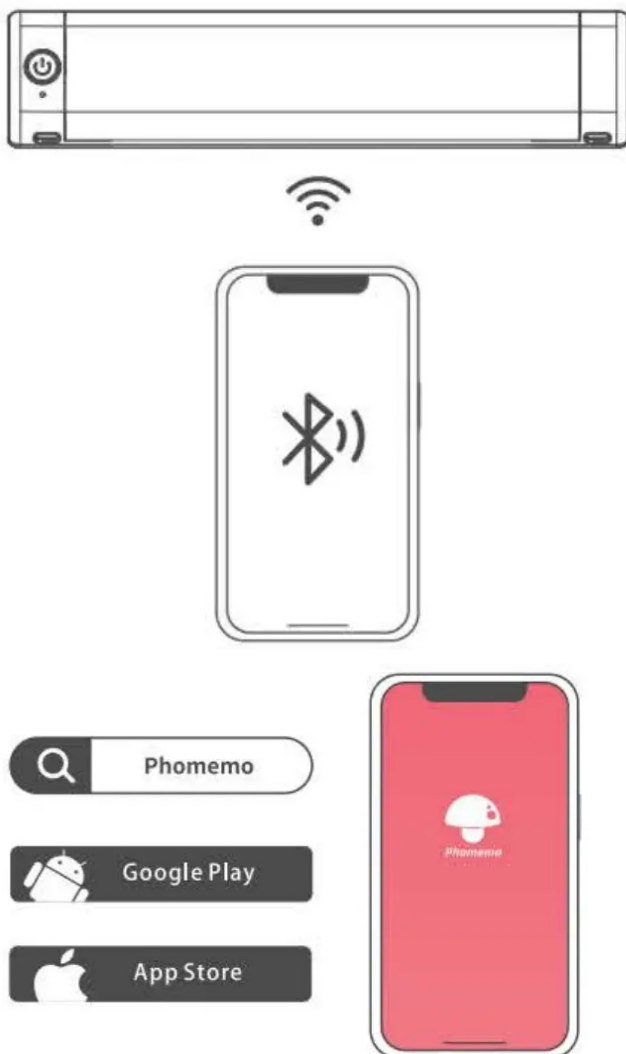


Right-click the file and click the print button.

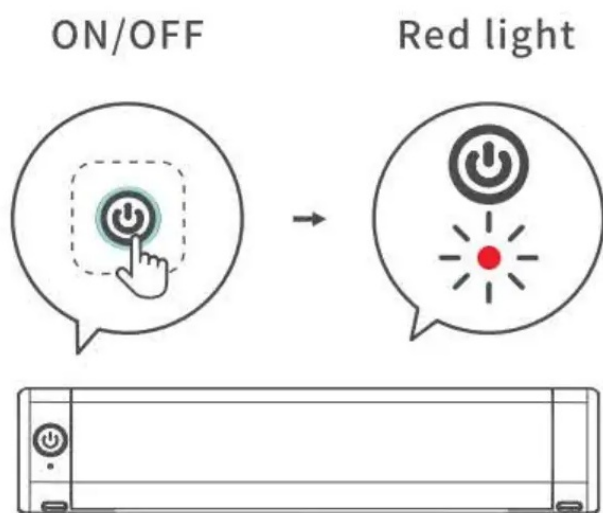


Select M08F on your computer and start printing.

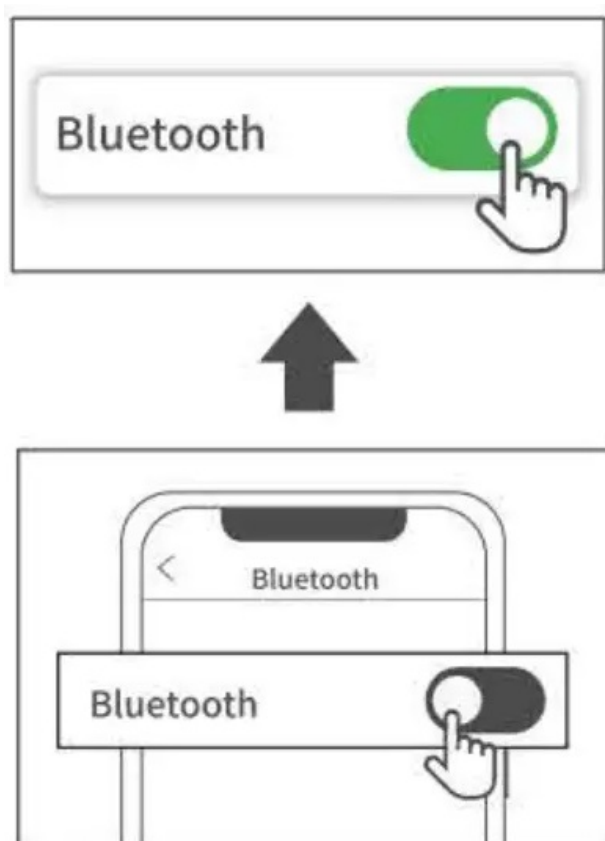
### Smartphone-controlled



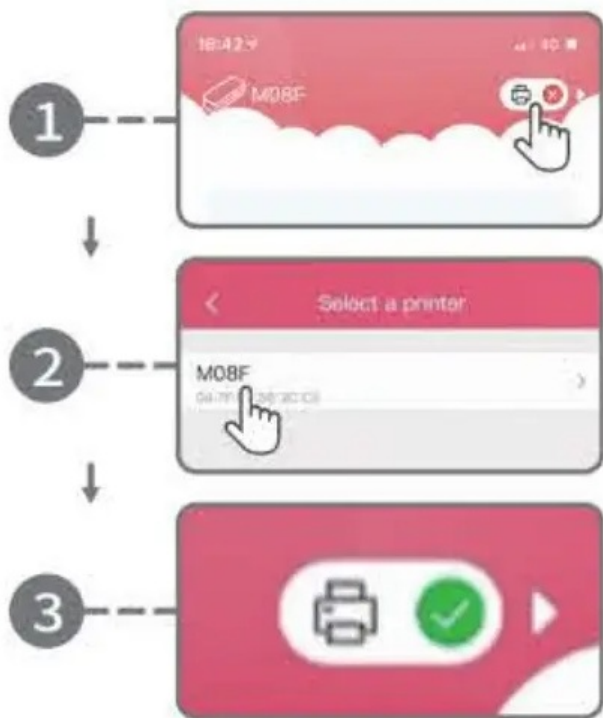
Get/install the Phomemo App



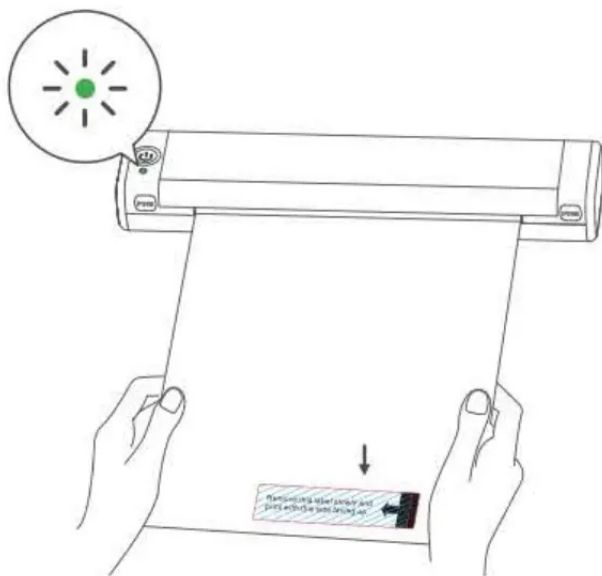
Press and hold for 3s to turn on the MO8F printer



Turn on Bluetooth from phone settings



Connect the printer via Bluetooth in the phomemo App.




Please remove this label and print with this side facing up



Select the file in the Phomemo App to print

***Read More About This Manual & Download PDF:***

**Documents / Resources**

	<p><a href="#">Phomemo M08FS Computer Printing With Data Cable</a> [pdf] User Manual M08FS Computer Printing With Data Cable, M08FS, Computer Printing With Data Cable, Printin g With Data Cable, Data Cable, Cable</p>
---	--

**References**

- [User Manual](#)



