

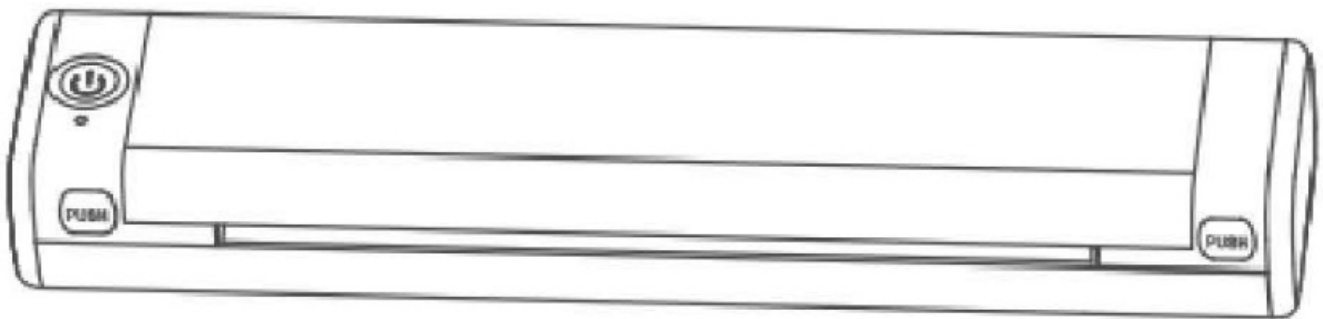


## phomemo M08F Portable Printer User Guide

[Home](#) » [Phomemo](#) » phomemo M08F Portable Printer User Guide 

# Phomemo

Portable Printer  
User Guide

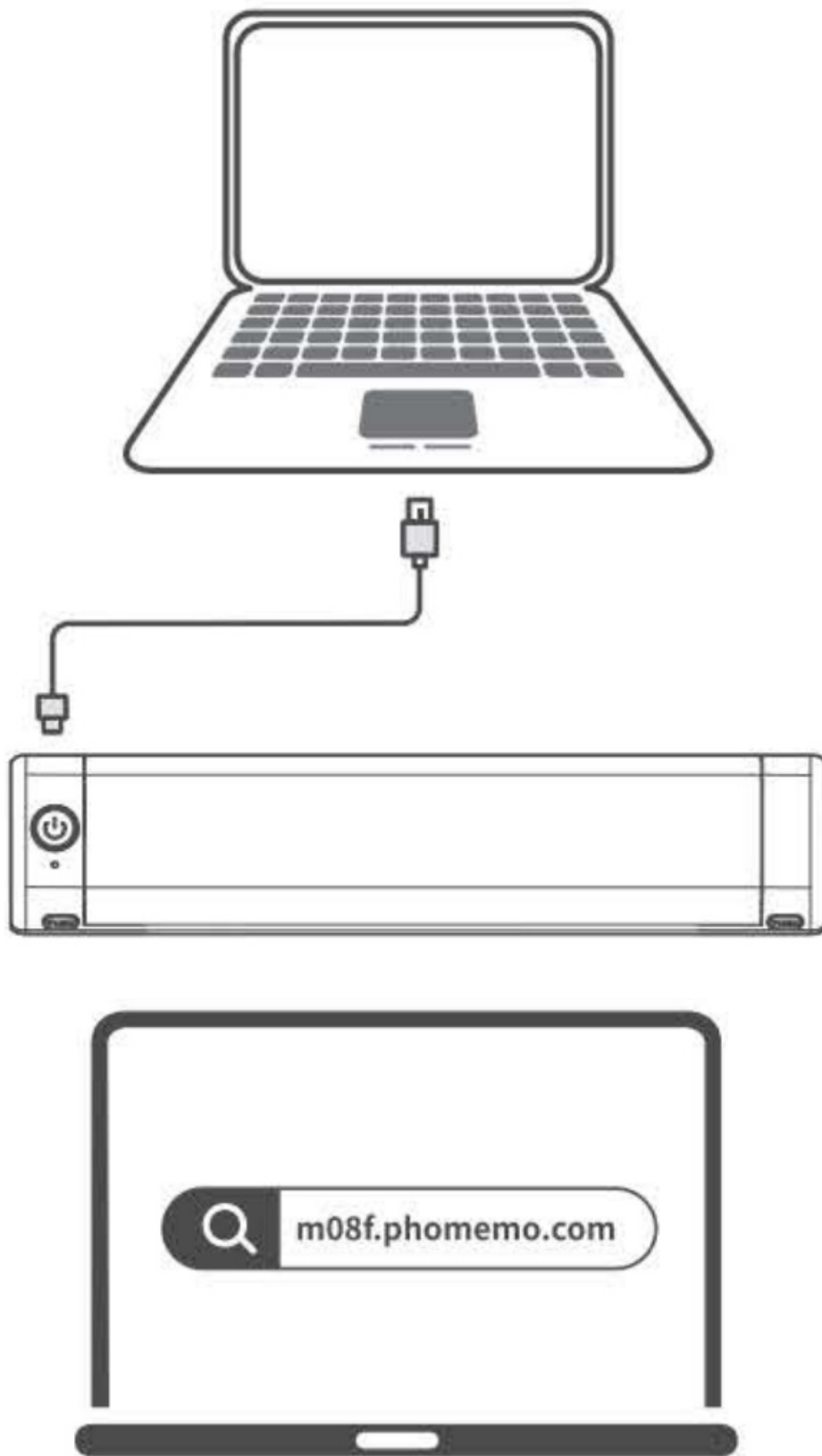


Phomemo M08F

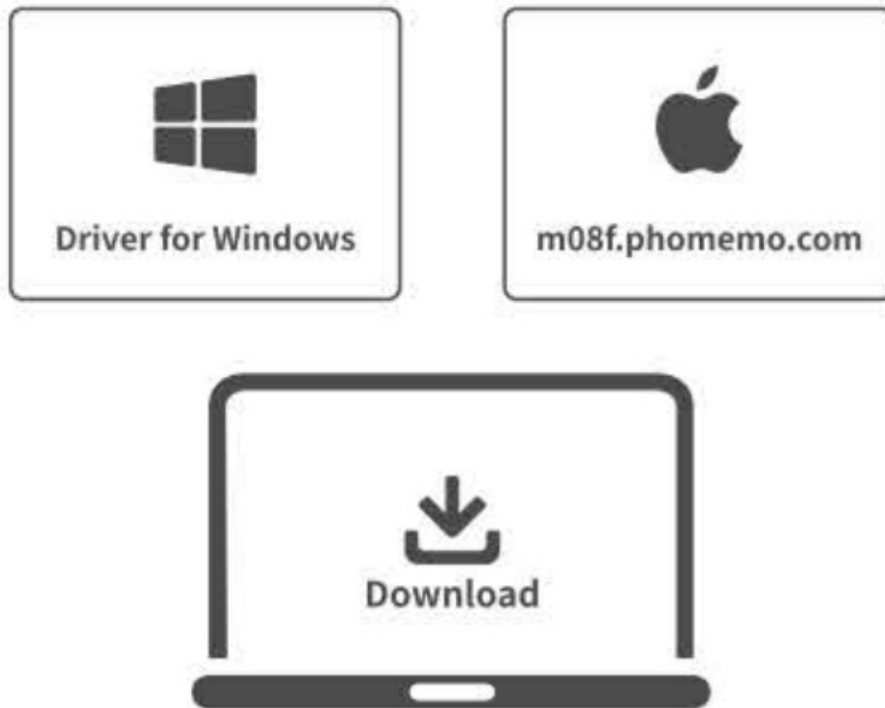
### Contents

- [1 Computer Printing with Date Cable](#)
- [2 Smartphone-controlled](#)
- [3 Documents / Resources](#)
- [4 Related Posts](#)

### Computer Printing with Date Cable



Open the link: [m08f.phomemo.com](https://m08f.phomemo.com)



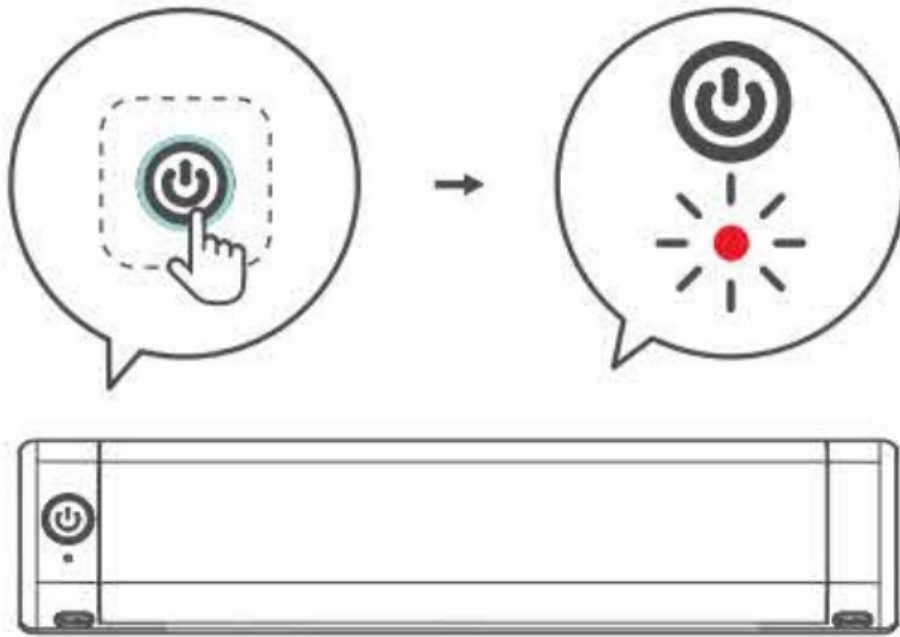
Download the corresponding drive for your computer system



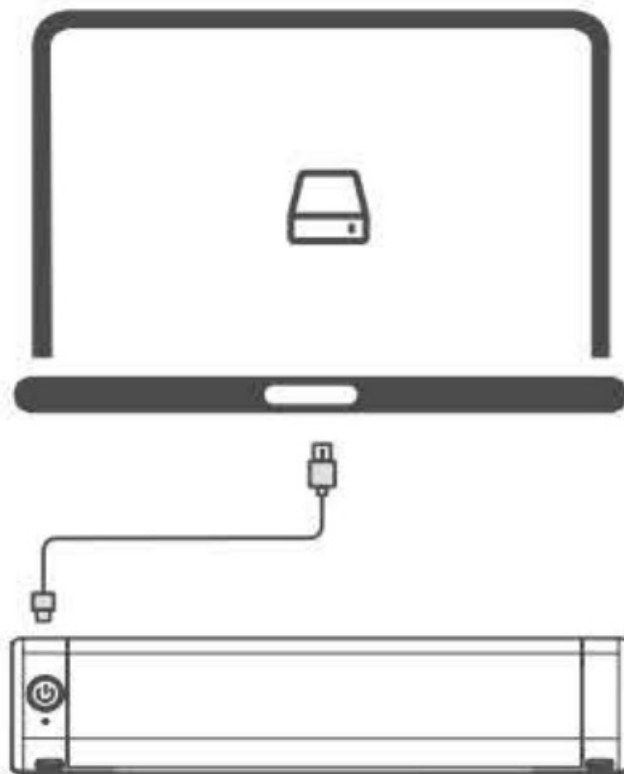
Click the next button

ON/OFF

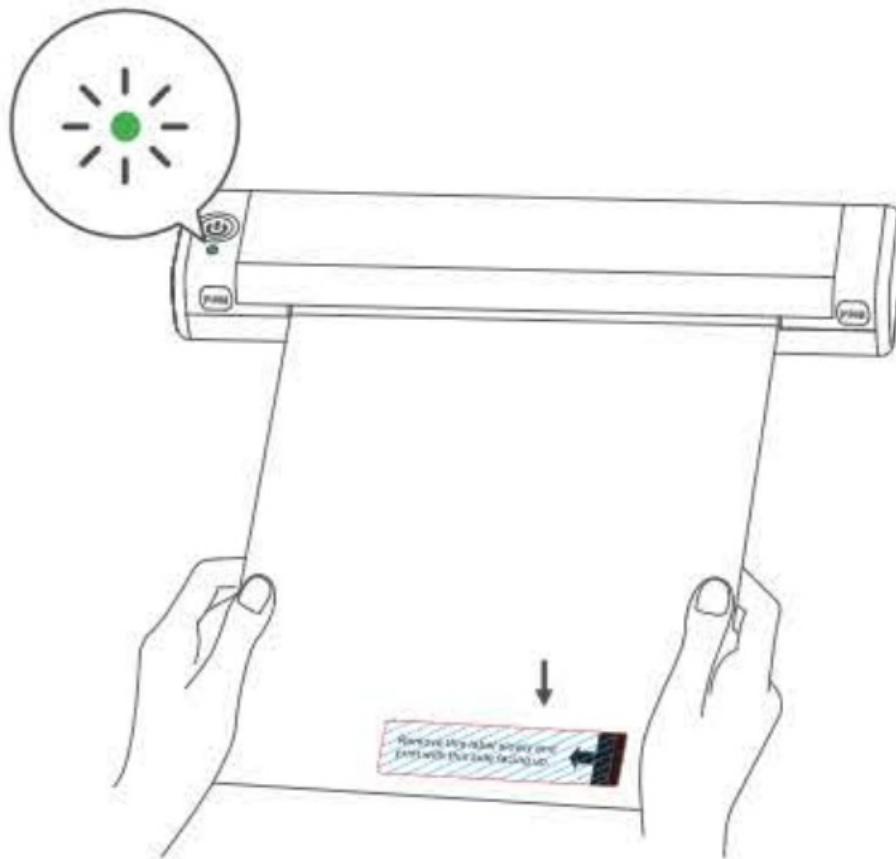
Red light



Press and hold for 3s to turn on the MOSF printer



Connect the printer to your computer with a Type-C data cable



Please remove this label and print with this side facing up

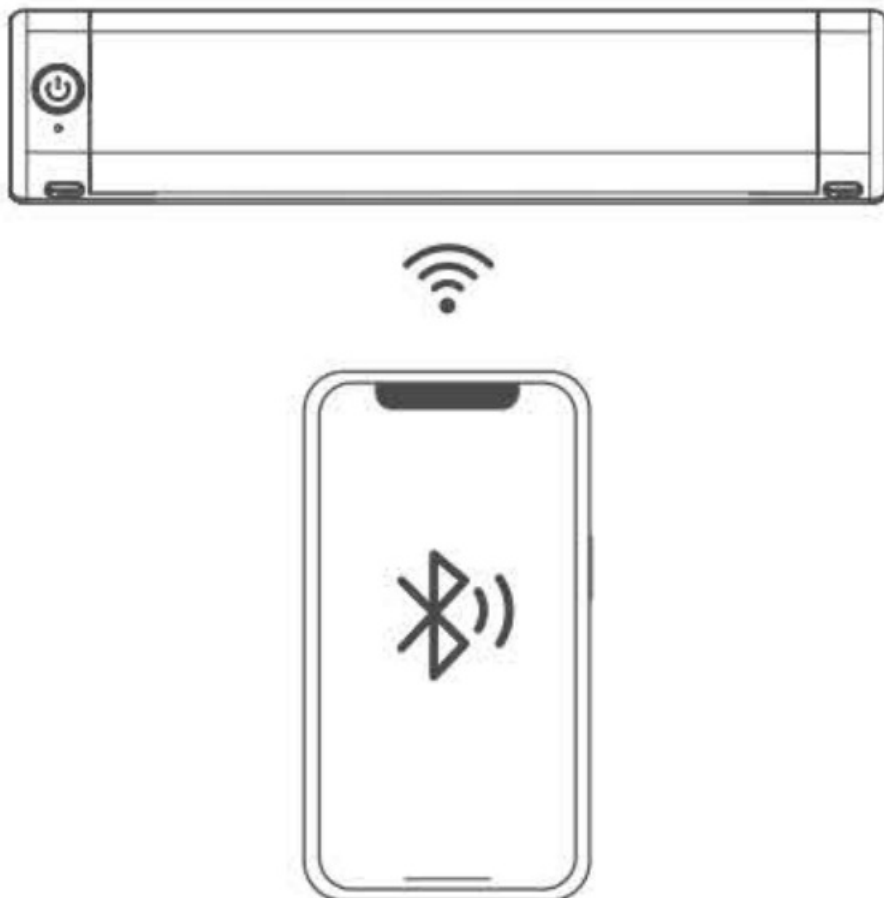


Right-click the file and click the print button.



Select M08F on your computer and start printing.

### Smartphone-controlled





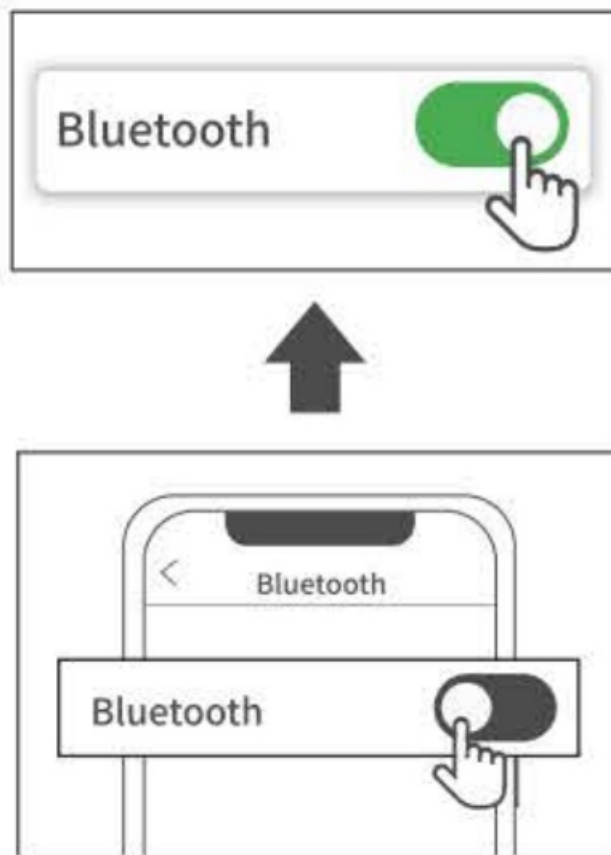
Get/install the Phomemo App

ON/OFF

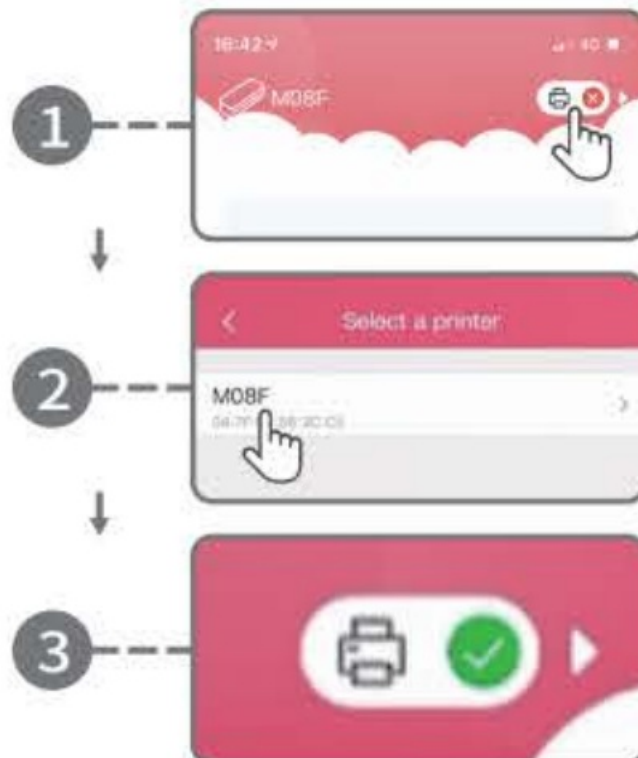
Red light



Press and hold for 3s to turn on the MO8F printer

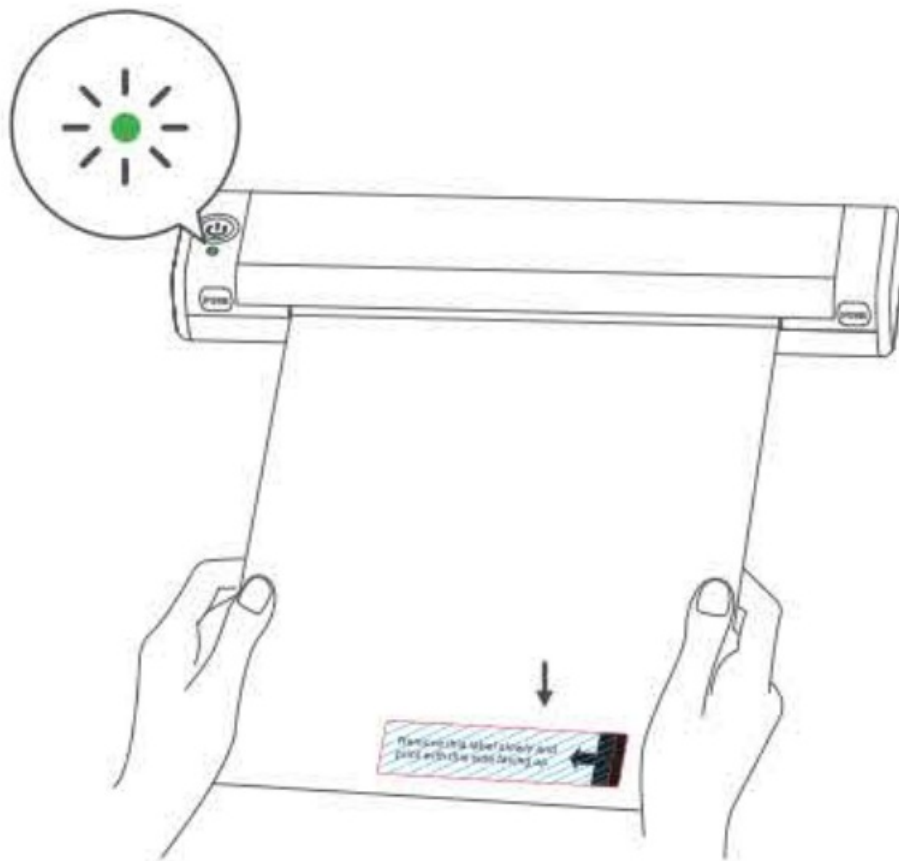


Turn on Bluetooth from phone settings



Connect the printer via Bluetooth in the phomemo App.





Please remove this label and print with this side facing up



Select the file in the Phomemo App to print

# Phomemo

## Documents / Resources

	<a href="#">phomemo M08F Portable Printer</a> [pdf] User Guide M08F Portable Printer, M08F, Portable Printer, Printer
---	--

Manuals+.