

Phomemo D35 Portable Bluetooth Handheld Label Printer



Phomemo D35 Portable Bluetooth Handheld Label Printer Instructions

[Home](#) » [Phomemo](#) » Phomemo D35 Portable Bluetooth Handheld Label Printer Instructions 

Contents

- [1 Phomemo D35 Portable Bluetooth Handheld Label Printer](#)
- [2 Product Specifications](#)
- [3 Instructions for use](#)
- [4 App Download Method](#)
- [5 Label Maker Connection](#)
- [6 Solutions for Common Problems](#)
- [7 Product Warranty](#)
- [8 FCC Caution](#)
- [9 Documents / Resources](#)
 - [9.1 References](#)
- [10 Related Posts](#)

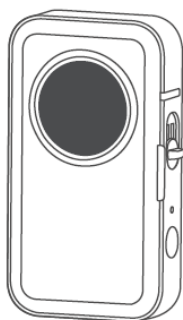
Phomemo

Phomemo D35 Portable Bluetooth Handheld Label Printer

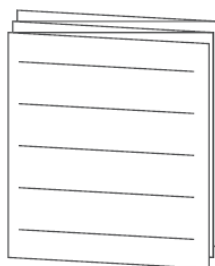


Please read this instruction carefully before using this product and keep it properly.

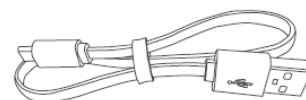
Packing List



Label Maker*1



Product instruction*1



Charging line*1

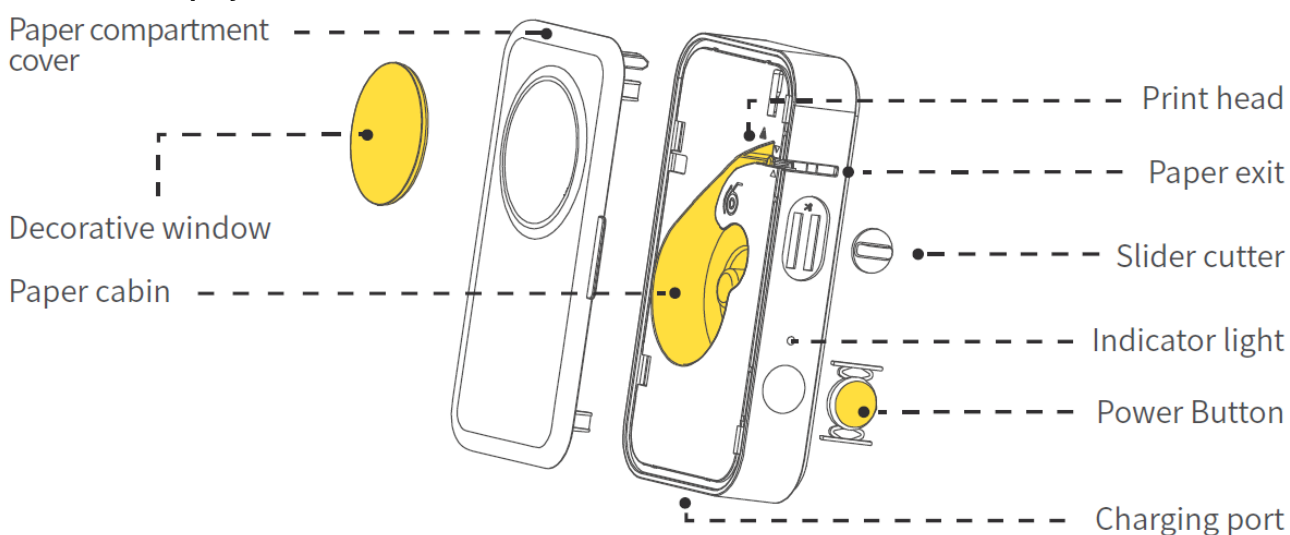
The number of paper rolls in the list is subject to the actual shipment.

Product Specifications

Product name	Smart Mini Label Maker
Product model	D35
Printing technology	Thermal printing
Consumable width	6-15mm
Effective printing width	12mm
Supported consumables	Pre-cut paper,black mark paper,continuous paper
Printing density	Light standard dark
Printing resolution	203dpi
Print head service life	50KM
Communication interface	Bluetooth
Product Size	135*79.6*29.2mm(5.3*3.1*1.15inch)
Power Input	
Power supply method	Type-C / Lithium battery
Supported operating system	Android / iOS

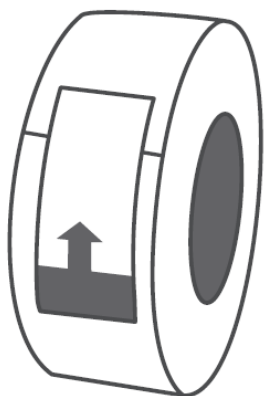
Parts Description Appearance Introduction

1. Label Maker display

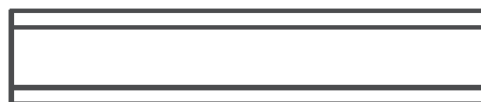


2. Label paper display

Various labels available for purchase



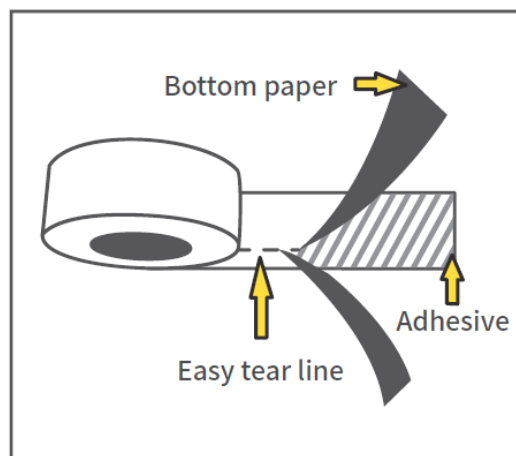
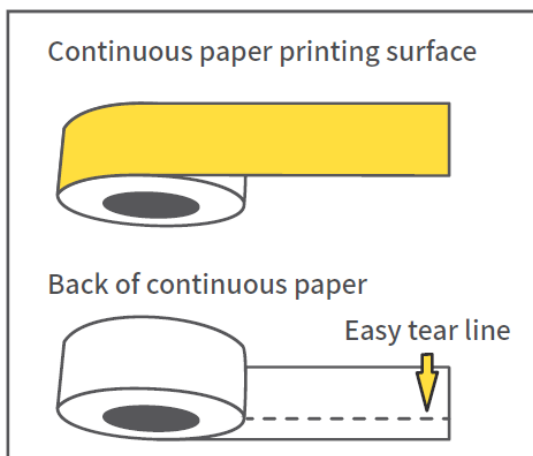
Gap paper display



Continuous paper display

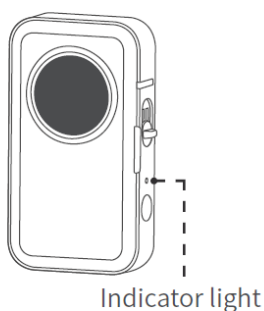
3. Continuous paper display

Easy to tear line design, easy to tear the bottom paper



Gently bend the label paper along the easy-to-tear line to make it easier to peel the bottom paper from the adhesive.

Parts Description Power Button and Indicator Light



Power button description

Button	Operation method	Functions
Power button	Presse für 3s	Turn on/off
	Click	Print out the paper
	Double click	Print the content of the self-test paper

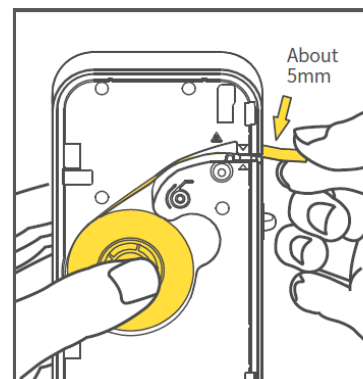
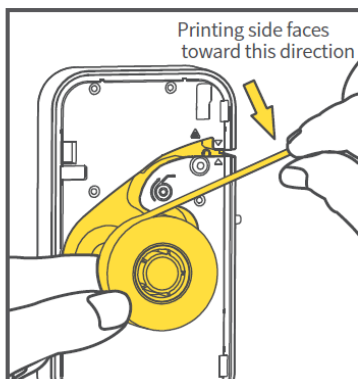
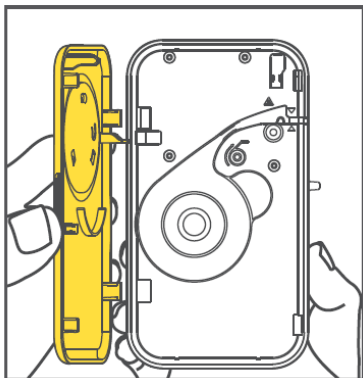
Power indicator status

	Green light keeps on	Normal status
	Green light flashes slowly	charging with power on
	Green light flashes quickly	charging with power off
	Red light keeps on	Error (lack of paper, cover opened, high temperature)
	Red light flashes slowly	10% battery
	Red light flashes quickly	5% battery

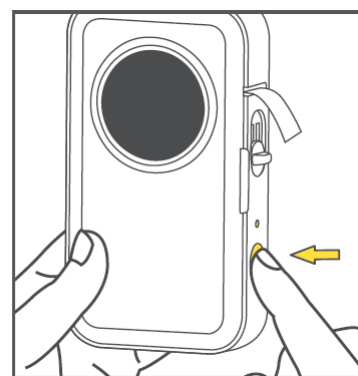
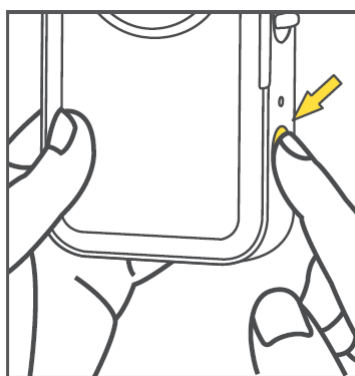
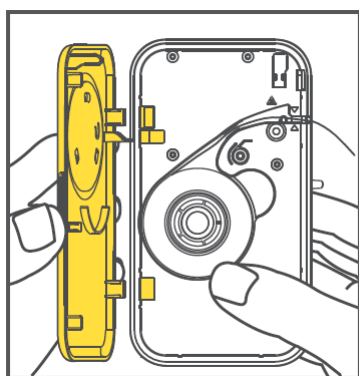
Instructions for use

1. Open the paper compartment cover of the machine

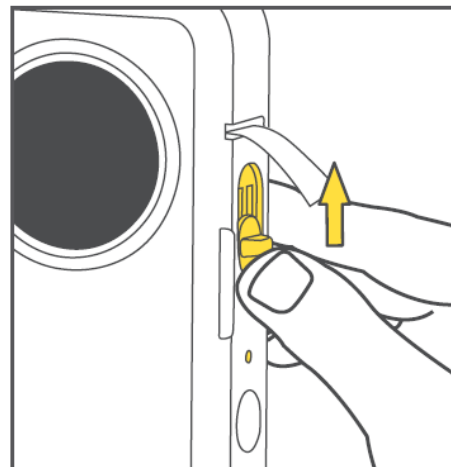
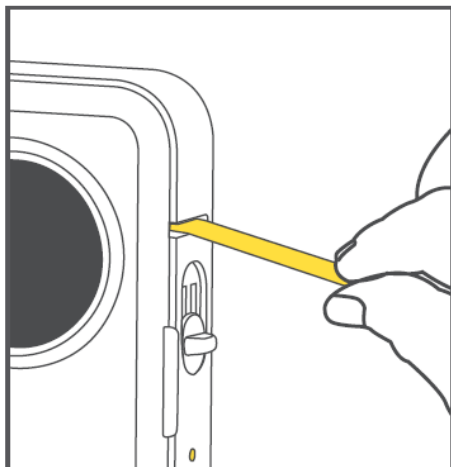
2. Put the label paper in the paper compartment with the printing side facing left
3. Pull out the label paper by 5mm in length for normal printing



4. Align the upper cover buckle and close the cover
5. Press and hold for 3s to turn on
6. Click the power button to identify the label position



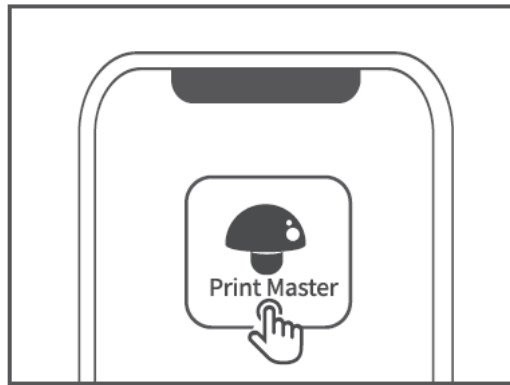
7. Come out a piece of paper positioning completed
8. After printing, slide the cutter button up to tear off the label



NOTE:

- When installing or replacing the label roll for the first time, the label position identification is required; (Step 06).
- If the label position identification is not carried out(Step 06) failures may occur such as first printing missing, not centered, etc.
- The continuous papers do not need to click the power button for positioning, just pull out the position of the paper outlet.

App Download Method



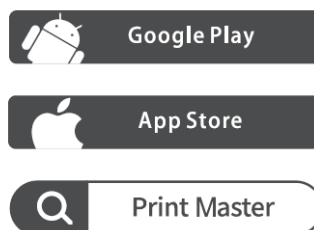
NOTE

- This product needs to be connected to the printer in the App;
- Due to the requirements of mobile phone system, the Android mobile phone will use the user's geographic location when connecting, so that the user needs to turn on the GPS and confirm the authorization.

Method I: Please use your mobile phone to scan the QR code to download the App.



Method II: Search and download



Label Maker Connection

1. Turn on GPS(Android mobile phone only)
2. Open the App
3. Click to search Connect now for the device
4. Connect immediately



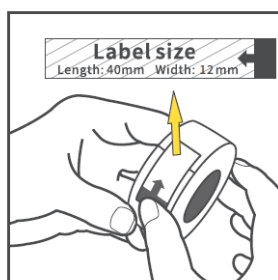
NOTE:

- When connecting device in the App, please make sure that your Label Maker is turned on and Bluetooth of your mobile phone is turned on.
- Due to the requirements of mobile phone system, the Android mobile phone will use the user's geographic location when connecting, so that the user needs to turn on the GPS and confirm the authorization.

Confirm the Label Size

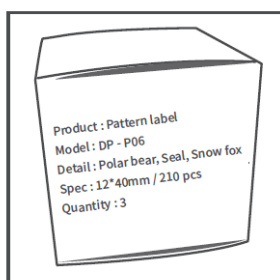
Method I:

Check the antiloosening paste (Please refer to the actual size used)



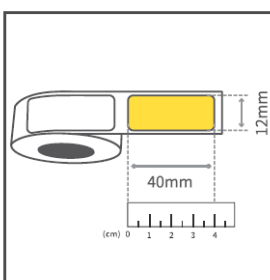
Method II:

Check the label paper packaging



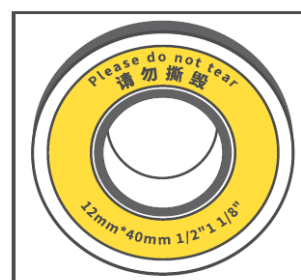
Method III:

Use a ruler to measure

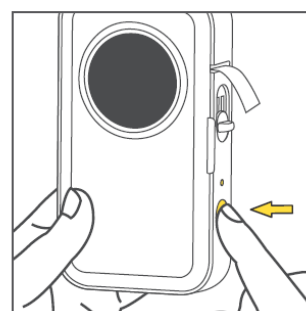
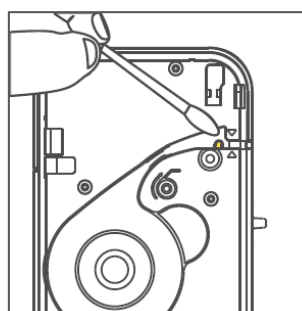
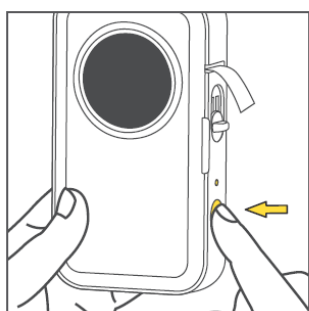


Method IV:

Check the label paper pads (the old and new versions of label paper are being replaced, please refer to the actual shipment)



Daily Cleaning



1. Turn off the Label Maker
2. Use a cotton swab dipped in a little alcohol
3. Wipe the print head gently
4. Wait for the alcohol to evaporate and then turn it on and doubleclick the power button to print labels

Note: Do not scratch the print head with hard objects, otherwise the thermal film will be permanently damaged and cannot be repaired).

Solutions for Common Problems

- **The printer can't close the cover?**

Please check: Are the buckles of the printer cover aligned?

Please align the upper cover buckle with the holes on the left, and then close the printer cover to the right.

- **Not centered, misplaced, offset, skipped, etc.**

- **Please check** Whether the paper roll is correctly placed in the machine?
- Please make sure that the label is placed in the machine with printing side facing left. If it is placed incorrectly (reversed), printing will fail.
- **Please check** Whether to select the corresponding label size and pattern in the App
- Please check the label size and image on the label packaging, and choose the correct template in the App. To do so, select "Label Setting"

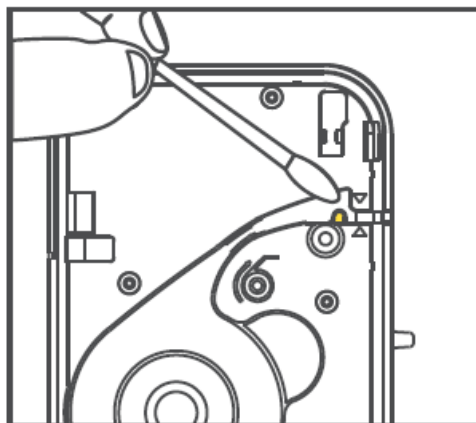
- **After the machine is turned on, whether to click the power button to allow the machine to calibrate and position the label**

- When installing or replacing label paper roll for the first time, the user needs to click the power button to print a blank label so that the print head can identify the position of label paper. The continuous papers do not need to click the power button for positioning, just pull out the position of the paper outlet.



- **Printing blurry**

- **Please Check** Whether the power of machine is sufficient. On the "Profile" page, click "Printer" and choose " " to view the specific power level. If the remaining power of printer is less than 10%, you can charge it for at least half an hour before use.



- Whether there is foreign matter or glue on the print head?
- There is foreign matter or glue on the print head. Please use a cotton swab dip with a little alcohol to gently wipe the dirt on the print head. Do not turn on the machine immediately after wiping. After the alcohol is evaporated and dry, double-click the power button to print the self-check page after turning on the machine to

check the effect.

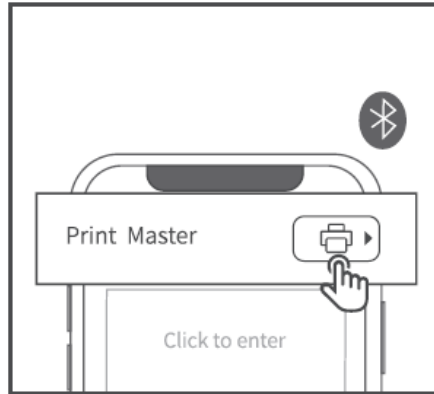
- **Printer cannot be connected**

- The status of the printer is on, and the mobile phone bluetooth has been turned on?
- **Is the device connection performed in App?**

This product needs to perform the device connection in App.

- **Is the mobile phone authorized?**

Because of the phone system's requirements, Android phones will use your location when it is connected, and you need to turn on GPS and confirm authorization (other phone systems don't need to turn on this function).



Product Warranty

Thank you for choosing the Smart Mini Label Maker.

1. We will provide customers with reliable “replacement/return” support during the one-year warranty period from the date of purchase;
2. Please keep the warranty card in a safe place so that you can read it when needed.

If you have any problem or need on our product or this user manual, please feel free to contact our customer services. We will do our best to help you.

Note: If the supporting software is updated, it will be compiled into the new version of the manual without notice

FCC Caution

This device complies with part 15 of the FCC Rules. Operation is subject to the following two conditions:

1. This device may not cause harmful interference, and
 2. this device must accept any interference received, including interference that may cause undesired operation.
- Any Changes or modifications not expressly approved by the party responsible for compliance could void the user's authority to operate the equipment.

Note: This equipment has been tested and found to comply with the limits for a Class B digital device, pursuant to part 15 of the FCC Rules. These limits are designed to provide reasonable protection against harmful interference in a residential installation. This equipment generates uses and can radiate radio frequency energy and, if not installed and used in accordance with the instructions, may cause harmful interference to radio communications. However, there is no guarantee that interference will not occur in a particular installation. If

this equipment does cause harmful interference to radio or television reception, which can be determined by turning the equipment off and on, the user is encouraged to try to correct the interference by one or more of the following measures:

- Reorient or relocate the receiving antenna.
- Increase the separation between the equipment and receiver.
- Connect the equipment into an outlet on a circuit different from that to which the receiver is connected.
- Consult the dealer or an experienced radio/TV technician for help.

RF warning for Portable device:

The device has been evaluated to meet general RF exposure requirement. The device can be used in portable exposure condition without restriction.

Warranty/Maintenance Card

☐ Replace

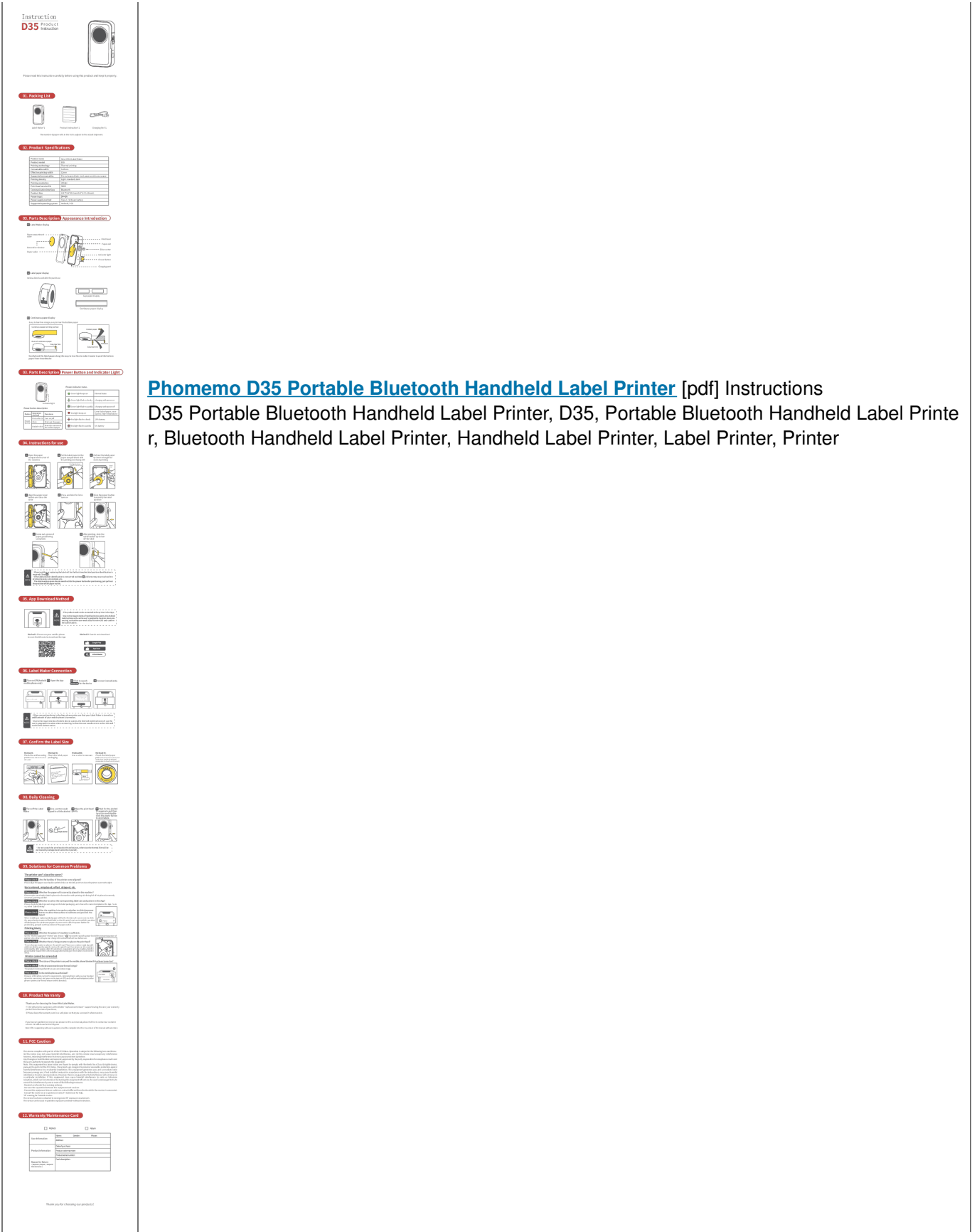
☐ Return

User Information	Name : Gender : Phone :
	Address :
Product Information	Date of purchase :
	Product order number :
	Product serial number :
Reason for Return (Replace / Repair / Request Maintenance)	Fault description :

Thank you for choosing our products

Documents / Resources

--	--



References

- [User Manual](#)