



PHOENIX Gravity Water Filter System Instructions

[Home](#) » [Phoenix](#) » PHOENIX Gravity Water Filter System Instructions 

Contents

- [1 PHOENIX Gravity Water Filter](#)
- [2 INSTRUCTION SHEET](#)
- [3 First Time Use](#)
- [4 Maintenance](#)
- [5 Documents / Resources](#)
 - [5.1 References](#)

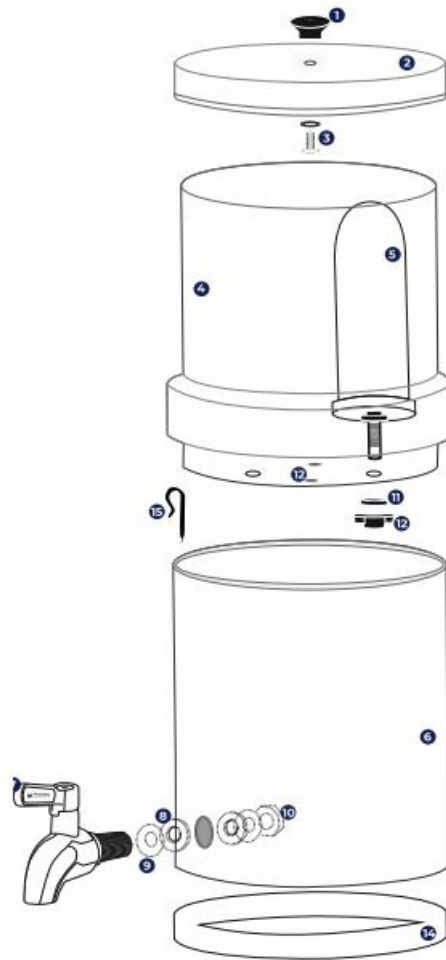


PHOENIX Gravity Water Filter



INSTRUCTION SHEET

Phoenix Gravity Water Filter System



1. Knob
2. Lid
3. Lid Screw and meta l washer
4. Upper chamber
5. Phoenix Gravity Spirit Ceramic Cartridge
6. Lower chamber
7. Tap
8. Tap washer
9. Stainless steel tap washer
10. Tap Nut
11. Washers
12. Wingnut
13. Silicon hole blocker
14. Rubber base ring
15. Optional Air lock clip

Before you start

Open all packaging- including cartridges, spares and accessories boxes. Remove components, checking each item against the diagram.

Cleanliness is key

- Wash your hands and clear a surface area to ensure no contamination during assembly. Wash the lid
- upper chamber

- and lower chamber
- with warm soapy water.
- Rinse thoroughly and let air dry whilst you proceed with the rest of the assembly

Assemble Lid

- Fit the knob
- onto the lid
- by inserting the screw and washer
- up through the hole in the lid and screw on the knob. Hand tighten only.

Fit tap

- Place the stainless steel tap washer
- the domed side facing the tap- onto the threaded part of the tap
- followed by one tap washer
- Insert thread through the hole in the lower chamber
- Place the second tap washer
- over the exposed thread within the chamber and secure in place with the nut
- Tighten the nut firmly whilst keeping the tap in an upright position. Hand tighten only.

Hole blockers

- Depending on the size of your Phoenix Gravity system, there will be two or four holes in the upper chamber
- The system comes with two filter cartridges as standard, and the remaining holes are plugged with food-grade silicon blockers
- If you wish to install additional filter cartridges and remove these blockers.

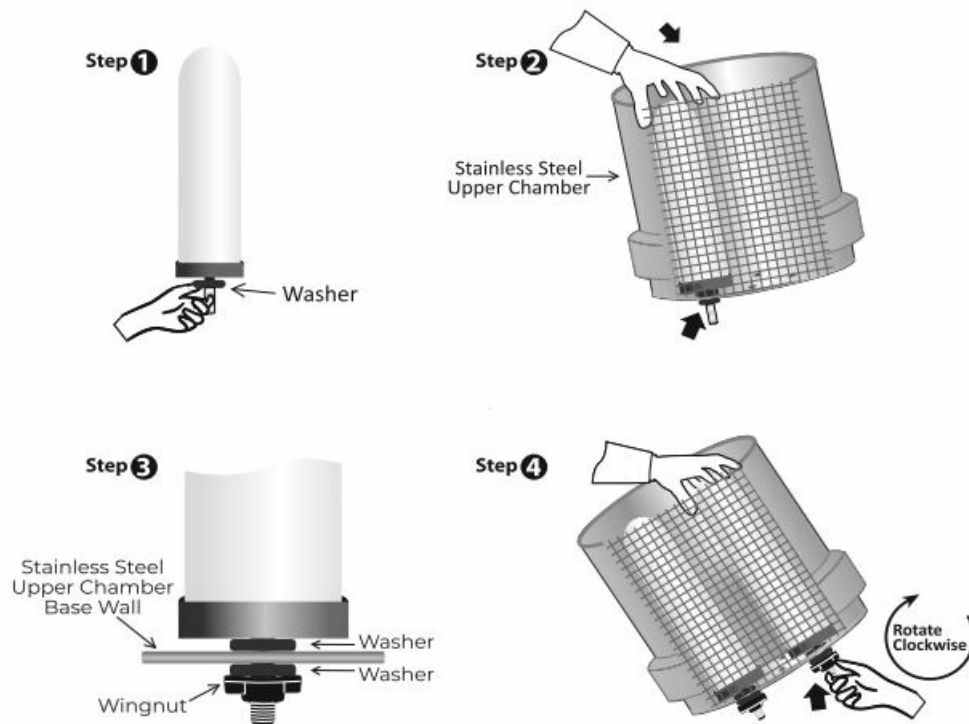
Install Spirit Ceramic Cartridges

Place the first of the black washers

- over the thread of the cartridge
- Place the cartridge thread
- through the hole in the base of the upper chamber
- and secure it with the remaining washer
- and a wingnut
- Hand tighten only. Repeat with all Cartridges.

Final Assembly

- Place upper chamber
- on lower chamber
- then lid
- on top of the upper chamber. Then you're ready for filtered water.

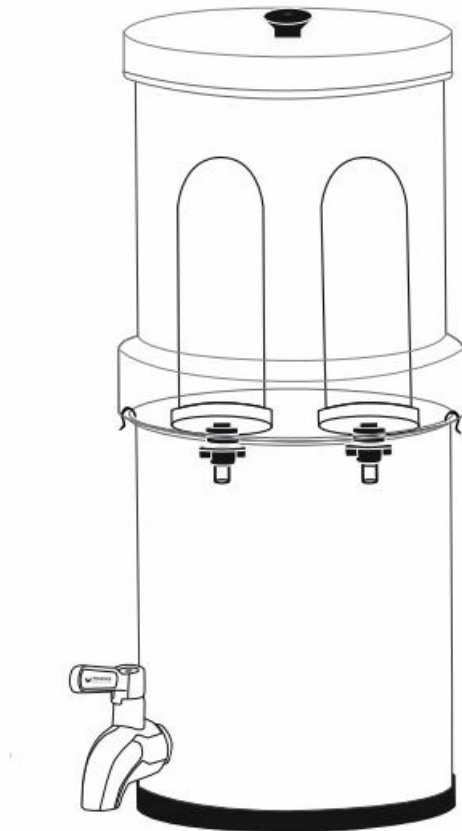


First Time Use

ONLY use with cold/ room temperature water. Make sure the tap is in the closed position (pointing right). Fill the upper chamber with water and cover it with the I ID (in ITIA I filtration may be slower before getting up to speed). Discard the first round of filtered water. Slow or no flow An air lock clip can be placed on the lip of the lower chamber.

Maintenance

To clean your Phoenix Gravity Filter System, wash and dry your hands then remove and set aside cartridges (keeping them uncontaminated). Then gently wash the system, with warm soapy water and a abrasive cloth/ sponge. Rinse thoroughly and air dry or wipe with a micro-fibre cloth for a shiny finish.



Lifespan: up to 6,000 litres per pair.

Replace every 12 months.

Warranty: 6 months for Phoenix Gravity Spirit Ceramic Filter Cartridge. 10 years for Phoenix Gravity Filter System.

Activate via phoenixwaterfilters.com/support

For details, T&Cs and further support:
phoenixwaterfilters.com

Documents / Resources



[PHOENIX Gravity Water Filter System](#) [pdf] Instructions
Gravity Water Filter System, Gravity, Water Filter System, Filter System

References

- [User Manual](#)

Manuals+.