



PHOENIX Gravity 1 Litre Water Filter System Instructions

[Home](#) » [Phoenix](#) » PHOENIX Gravity 1 Litre Water Filter System Instructions 

Contents

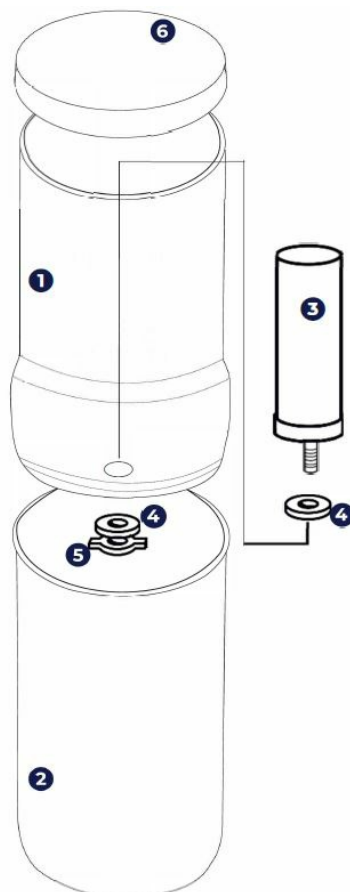
- [1 PHOENIX Gravity 1 Litre Water Filter System](#)
- [2 Maintenance](#)
- [3 Before use, your Carbon Filter Cartridge must be primed](#)
- [4 Assembly Procedure](#)
- [5 Documents / Resources](#)
 - [5.1 References](#)
- [6 Related Posts](#)



PHOENIX Gravity 1 Litre Water Filter System



Phoenix Gravity Water Filter System – 1 Litre Travel Edition
Before you start, unpack all items and check against the list below:



1. Upper Chamber
2. Lower Chamber
3. Phoenix Gravity Carbon Filter Cartridge C, Washer
4. Wingnut
5. Lid

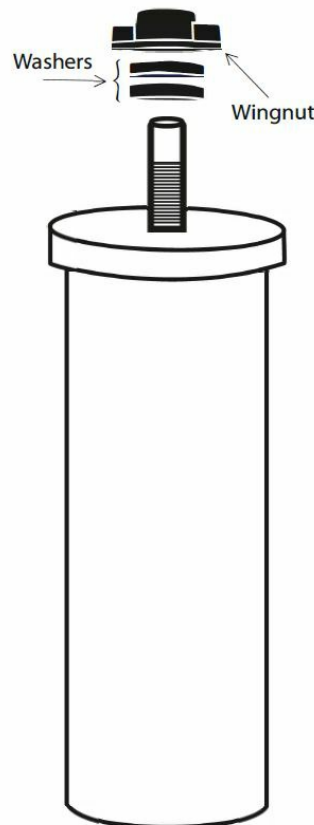
Maintenance

After 3-72 months (usage dependant) your cartridge flow rate may significantly reduce. This is completely normal- due to either clogging or drying out. simply clean to restore the flow rate.

Cleaning Cartridge: remove water from both chambers then remove the filter. Lightly scrub it by running under cold water using a soft brush or scouter (NO soap or detergent). Always brush away from thread to ensure no contamination.

Cleaning System: with the cartridge removed use a soft cloth or sponge with warm soapy water. Rinse with fresh water and leave to air dry or buff with a microfibre cloth. Reinstall the cartridge back into the Upper Chamber. DO NOT use soap or detergents.

Before use, your Carbon Filter Cartridge must be primed



Priming is a simple process that flushes the Carbon Filter Cartridge of any residual sediment from the manufacturing process. These particles are completely safe but may be blocking the pores which could lead to slow flow and cloudy water. Priming must be done before the filter is used.

Before you start: Cleanliness is key

Wash hands before proceeding and ensure contamination does not take place whilst priming/assembling. Ensure all packaging is removed and unscrew two washers and wing nuts from the thread of your Carbon Filter Cartridge.

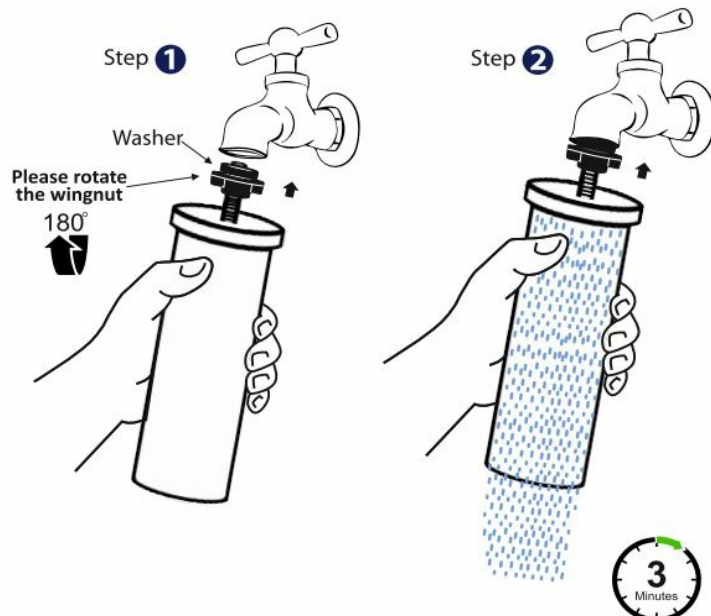
How to Prime

Step 0 Screw the wing nut- flat face upwards onto the cartridge thread and place a washer it.

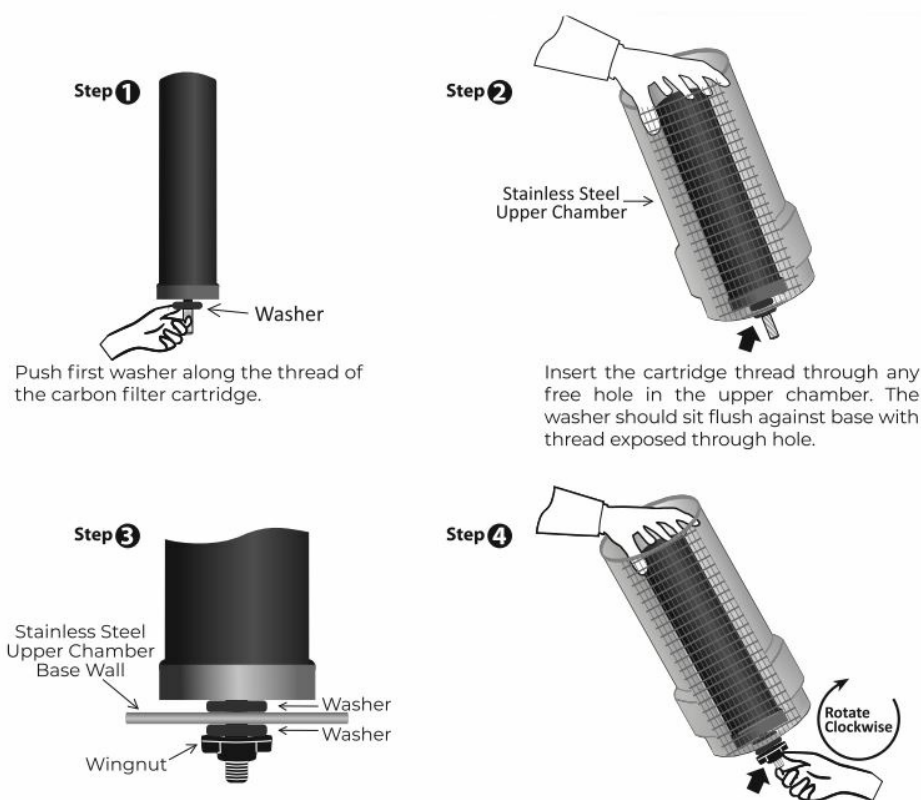
Step 1

Turn on the tap (cold water ONLY) to a slow flow- producing water beads on the surface. Hold in place for 2-3 minutes allow the cartridge to become fully saturated and flushed.

Priming of Phoenix Gravity Carbon Filter Cartridge



Assembly Procedure



To the exposed thread slide on the second washer to base. Securely screw on the wingnut snugly against the washer.

Important: Do not over-tighten

Important: To ensure proper water purification, make sure cartridges have a washer attached between the base and the cartridge. The first two rounds of filtered water should be discarded.



Lifespan: up to 10,000 litres.

Replace every 18 months.

Warranty: 6 months for Phoenix Gravity Carbon Filter Cartridge. and 10 years for Phoenix Gravity Filter System.

Activate via phoenixwaterfilters.com/support For details, T&Cs and further support: phoenixwaterfilters.com

Documents / Resources



[PHOENIX Gravity 1 Litre Water Filter System](#) [pdf] Instructions
Gravity 1 Litre Water Filter System, Gravity 1, Litre Water Filter System, Filter System

References

- [User Manual](#)