




## PHOENIX Folding 2023 Gravity Carbon Filter Instructions

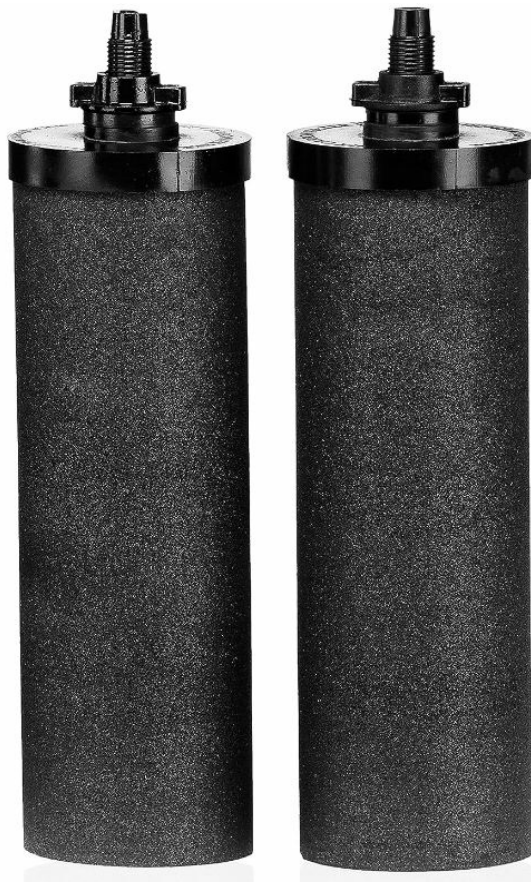
[Home](#) » [Phoenix](#) » PHOENIX Folding 2023 Gravity Carbon Filter Instructions 

### Contents

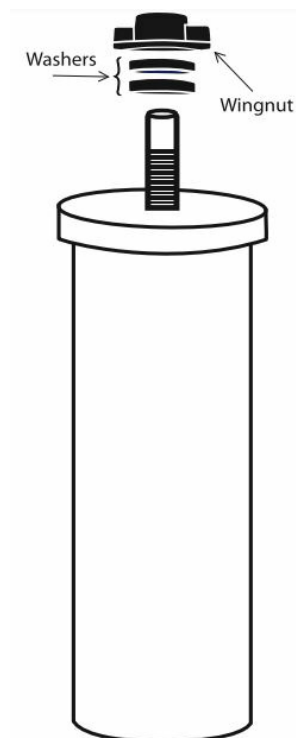
- [1 PHOENIX Folding 2023 Gravity Carbon Filter](#)
- [2 How to Prime](#)
- [3 Priming of Phoenix Gravity Carbon cartridges](#)
- [4 Assembling into Phoenix Gravity Water Filter System](#)
- [5 Maintenance](#)
- [6 Documents / Resources](#)
  - [6.1 References](#)
- [7 Related Posts](#)



**PHOENIX Folding 2023 Gravity Carbon Filter**



**Before use, your Carbon Cartridges must be primed**



- Priming is a simple process that flushes the carbon filter cartridge of any residual sediment from the manufacturing process.
- These particles are completely safe but may be blocking the pores which could lead to slow flow and cloudy water.
- Before you start: Cleanliness is key
- Wash hands before proceeding and ensure contamination does not take place while priming/cleaning the

cartridges.

- Ensure all packaging is removed and two washers and wingnuts from the thread of each carbon filter cartridge.

## How to Prime

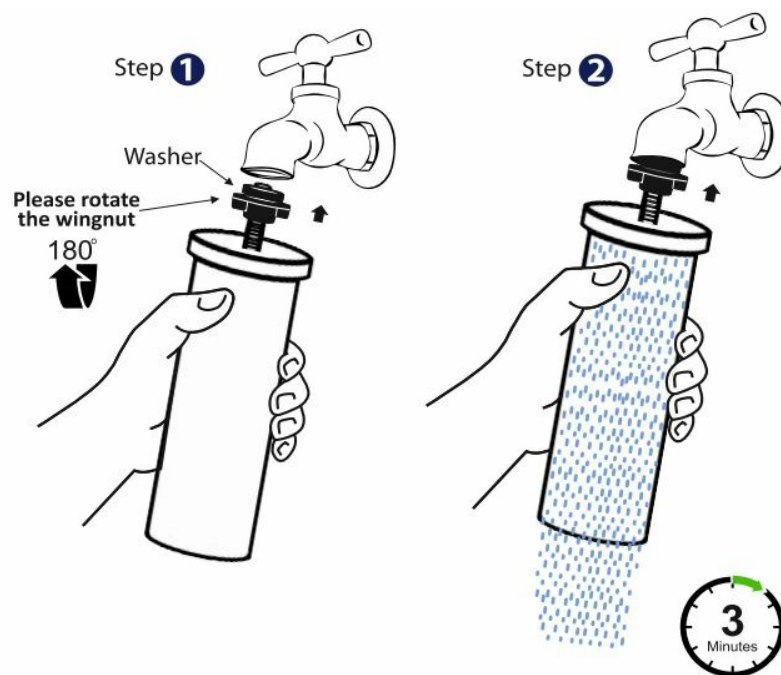
### Step 1

Screw the wing nut- flat face upwards-onto the filter thread and place a washer over it. Firmly press the washer flush against the tap spout.

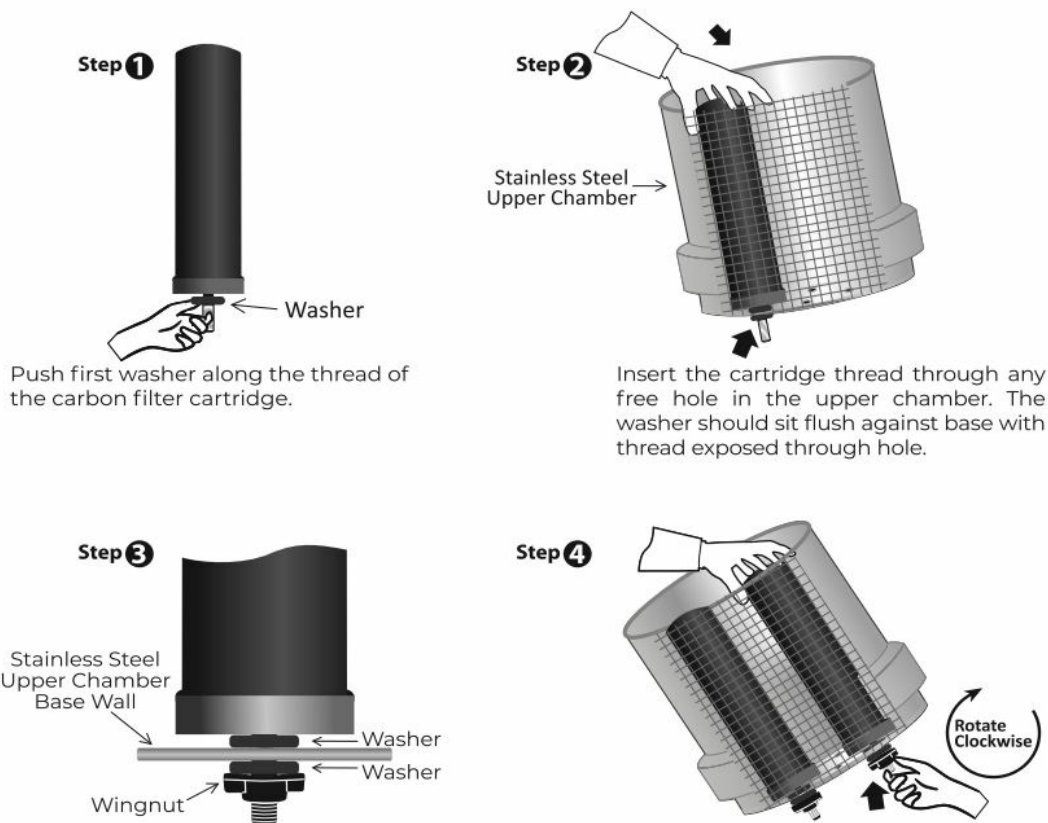
### Step 2

Turn on the tap (cold water ONLY) to a slow flow- producing water beads on the surface. Hold in place for 2-3 minutes allow the cartridge to become fully saturated and flushed.

## Priming of Phoenix Gravity Carbon cartridges



## Assembling into Phoenix Gravity Water Filter System



The exposed thread slide on the second wish, nuts is huge against Wasee.

**Important:** Do not over-tighten Repeat for each cartridge. Important: Check seals to ensure proper water purification: Each cartridge must have two washers fitted as indicated in Step 3. All holes without cartridges must have hole blockers. You're now ready to start filtering, see overleaf.

### Before use

discard the first two rounds of filtered water. If primed incorrectly, you may need to discard up to 4 rounds of filtered water- until it runs clear.

### Maintenance

After 3-12 months (usage dependent) your cartridge flow rate may significantly reduce. This is completely normal- due to either clogging or drying out. Simply clean to restore the flow rate.

### To Clean

Remove unfiltered water from the Upper Chamber to make sure none spills into the Lower Chamber. Then remove filters. Lightly scrub each filter under running cold water using a soft brush or scourer. Always brush away from the threaded mount to ensure it doesn't get contaminated. Re-assemble the filters back into the Upper Chamber. DO NOT use soap or detergents.



**Lifespan:** up to 20,000 litres per pair.  
Replace every 18 months.

**Warranty:** 6 months for Phoenix Gravity Carbon Filter Cartridge.  
For details, T&Cs and further support: [phoenixwaterfilters.com](https://phoenixwaterfilters.com)

---

## Documents / Resources



[PHOENIX Folding 2023 Gravity Carbon Filter](#) [pdf] Instructions  
Folding 2023 Gravity Carbon Filter, Folding 2023, Gravity Carbon Filter, Carbon Filter, Filter

## References

- [User Manual](#)

[Manuals+](#).