



PHOENIX 2023 Water Filter System with Carbon Filter Cartridge Instructions

[Home](#) » [Phoenix](#) » PHOENIX 2023 Water Filter System with Carbon Filter Cartridge Instructions 

Contents

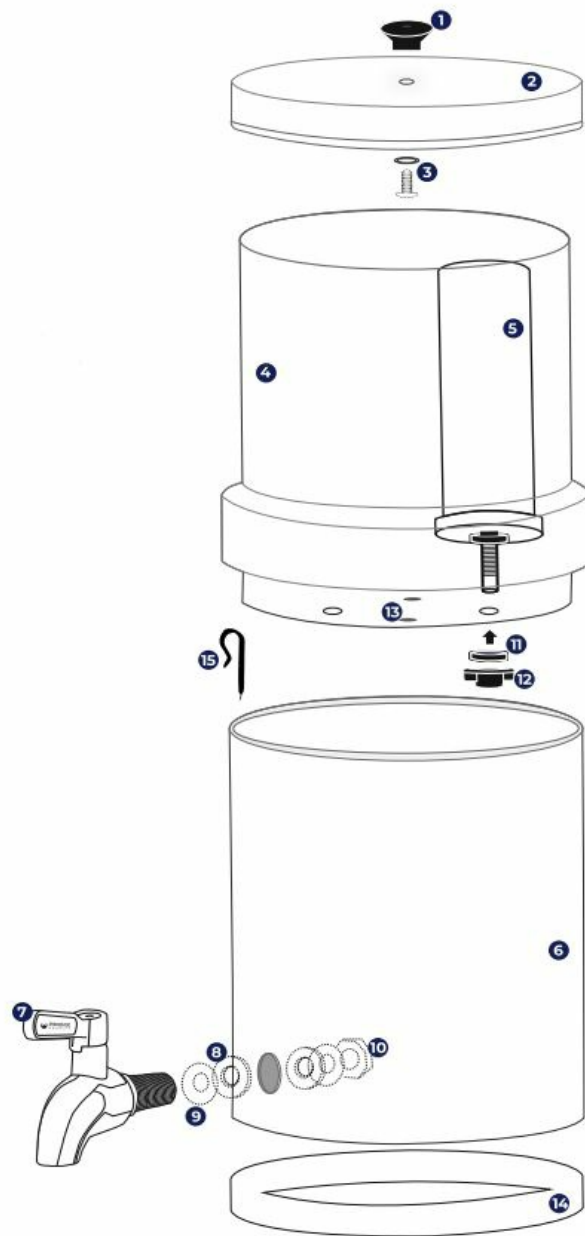
- [1 PHOENIX 2023 Water Filter System with Carbon Filter Cartridge](#)
- [2 Phoenix Gravity Water Filter System](#)
- [3 Before you start](#)
- [4 First Time Use](#)
- [5 Maintenance](#)
- [6 Documents / Resources](#)
 - [6.1 References](#)
- [7 Related Posts](#)



PHOENIX 2023 Water Filter System with Carbon Filter Cartridge



Phoenix Gravity Water Filter System



1. Knob
2. Lid
3. Lid Screw and metal washer
4. Upper chamber
5. Phoenix Gravity Carbon Filter Cartridge
6. Lower chamber
7. Tap
8. Tap washer
9. Stainless steel tap washer
10. Tap Nut
11. Washers
12. Wingnut
13. silicon hole blocker
14. rubber base ring
15. Optional Air lock clip

Before you start

Open all packaging and boxes fully. Remove components and check each item against the diagram on page one.

Step 1: Cleanliness is key Wash your hands and clear a surface area to ensure no contamination during assembly. Wash the lid (2), upper chamber (4) and lower chamber (6) with warm soapy water. Rinse thoroughly and let air dry whilst you proceed with the rest of the assembly!

Step 2: Assemble Lid

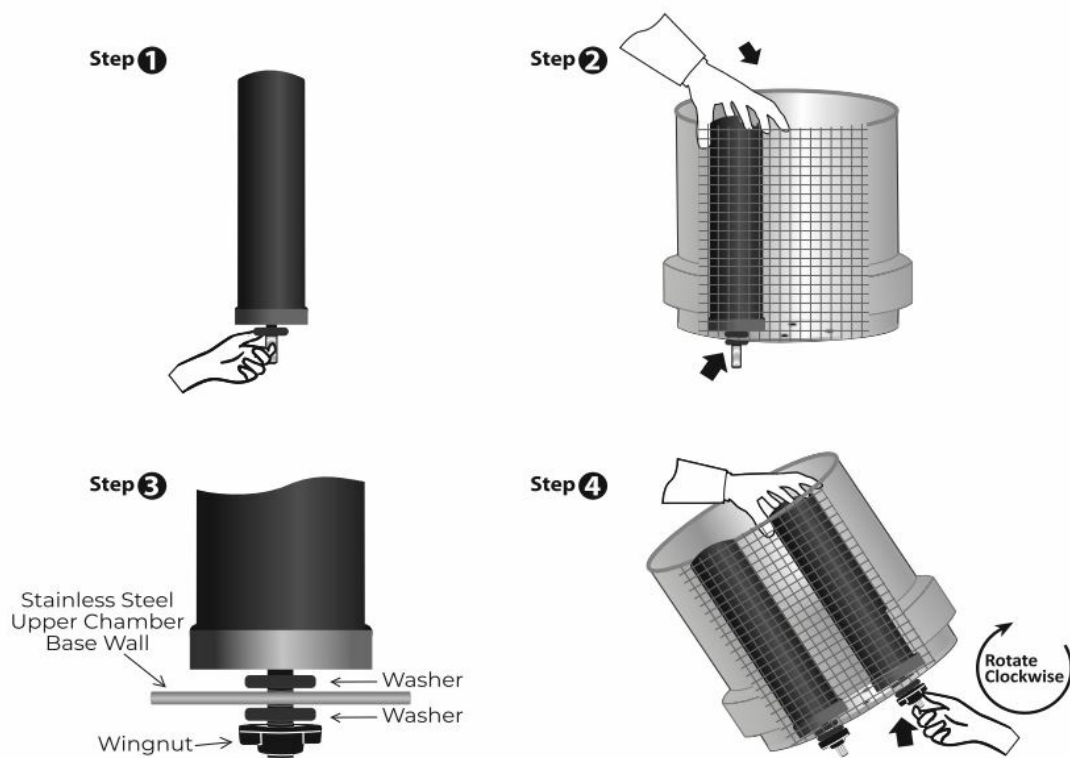
Fit the knob (1) onto the lid (2) by inserting the screw and washer (3) up through the hole in the lid and screwing on the knob. Hand tighten only.

Step 3: Fit tap

Place the stainless steel tap washer (9)- the domed side facing the tap- onto the threaded part of the tap (7) followed by one tap washer (8). Insert thread through the hole in the lower chamber (6). Place the second tap washer (8) over the exposed thread within the chamber and secure it in place with the nut (10). Tighten the nut firmly whilst keeping the tap in an upright position. Hand tighten only.

Step 4: Hole blockers Depending on the size of your Phoenix Gravity system, there will be two or four holes in the upper chamber (4). The system comes with two filter cartridges as standard, and the remaining holes are plugged with food-grade silicon blockers (13). If you wish to install additional filter cartridges, remove these blockers.

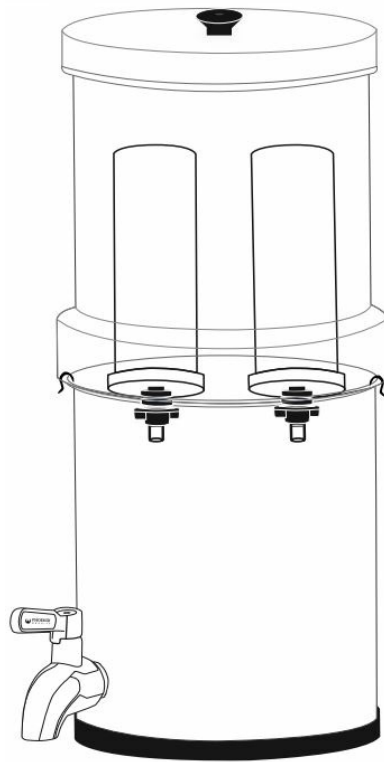
Step 5: Carbon Filter Cartridge Priming Priming ensures cartridges are ready for use. Follow the instructions in the Carbon Filter Cartridge box.



Step 6: Install Carbon Filter Cartridges Place the first of the black washers (11) over the thread of the cartridge (5). Place the cartridge thread (5) through the hole in the base of the upper chamber (4) and secure it with the remaining washer (11) and a wingnut (12). Hand tighten only. Repeat with all Cartridges.

Step 7: Final Assembly Place upper chamber (4) on lower chamber (6) then the lid (2) on top of upper chamber.

First Time Use



ONLY use with cold/ room temperature water. Make sure the tap is in the closed position (pointing right). Fill the upper chamber with water and cover with the lid (initial filtration may be slower before getting up to speed). Discard the first two rounds of filtered water or until the water runs clear. Slow or no flow? Air lock clips (15) can be placed on the lip of the lower chamber.

Maintenance

To clean your Phoenix Gravity Filter System, wash and dry your hands then remove and set aside cartridges (keeping them uncontaminated). Then gently wash the system, with warm soapy water and a non-abrasive cloth/ sponge. Rinse thoroughly and air dry or wipe with a micro-fiber cloth for a shiny finish.



Lifespan : up to 20,000 litres per pair.

Replace every 18 months.

Warranty: 6 months for Phoenix Gravity Carbon Filter Cartridge. and 10 years for Phoenix Gravity Filter System.

Activate via phoenixwaterfilters.com/support For details, T&Cs and further support: phoenixwaterfilters.com



[PHOENIX 2023 Water Filter System with Carbon Filter Cartridge](#) [pdf] Instructions
2023 Water Filter System with Carbon Filter Cartridge, 2023, Water Filter System with Carbon F
ilter Cartridge, Carbon Filter Cartridge, Filter Cartridge

References

- [User Manual](#)