



phocos CIS-CU Remote Configures CIS Charge Controllers User Manual

[Home](#) » [phocos](#) » **phocos CIS-CU Remote Configures CIS Charge Controllers User Manual**

phocos CIS-CU Remote Configures CIS Charge Controllers User Manual



Contents [[hide](#)

[1 Why Dim All Night?](#)

[2 Dim All Night with CISCOM in Non-Expert Mode](#)

[3 Dim All Night with CIS-CU](#)

[4 Support](#)

[5 Documents / Resources](#)

[5.1 References](#)

[6 Related Posts](#)

Why Dim All Night?

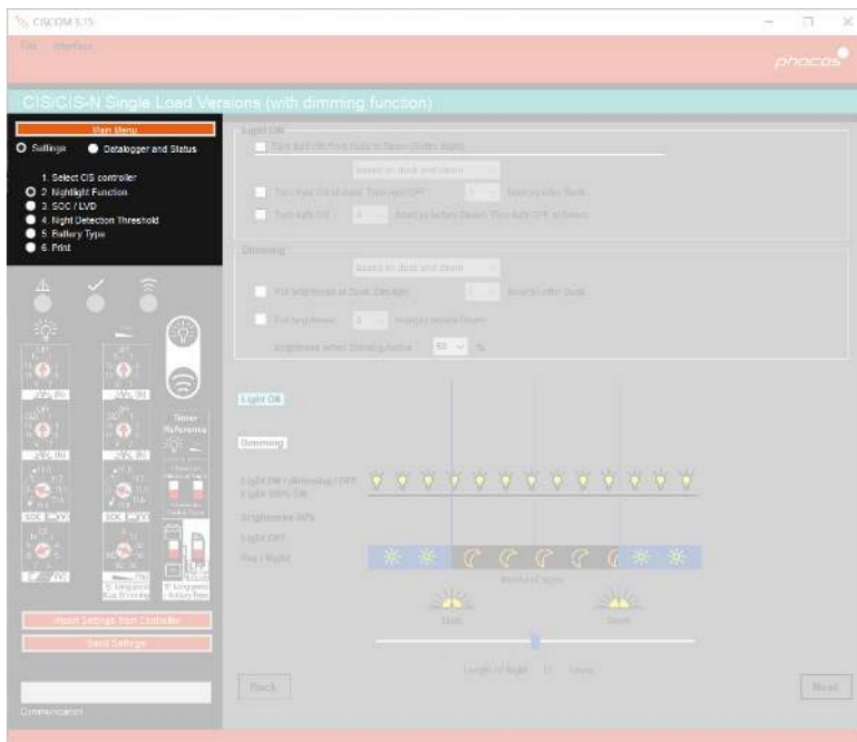
Dimming all night might benefit the following people:

- Solar lighting companies who have a standard lighting system used in a wide range of areas with some areas that receive less sunlight than the standard design needs.
- System designers who only want full light brightness triggered by a motion sensor.
- Users with batteries near end of life.

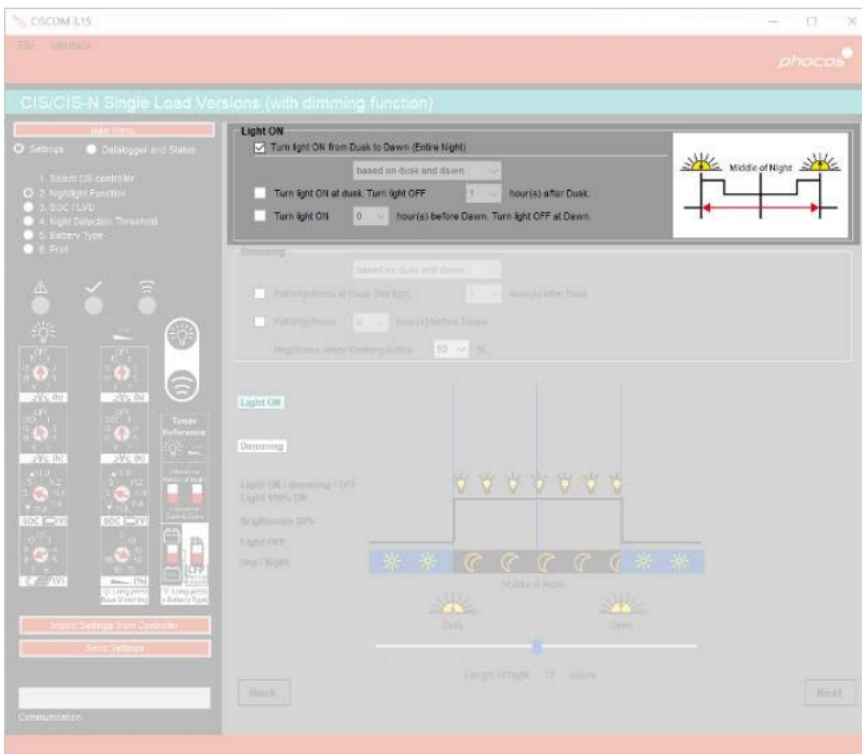
Dim All Night with CISCOM in Non-Expert Mode

Programming a CIS family controller to dim all night using CISCOM is accomplished with a few quick check box and dropdown selections. Follow these six steps to learn how.

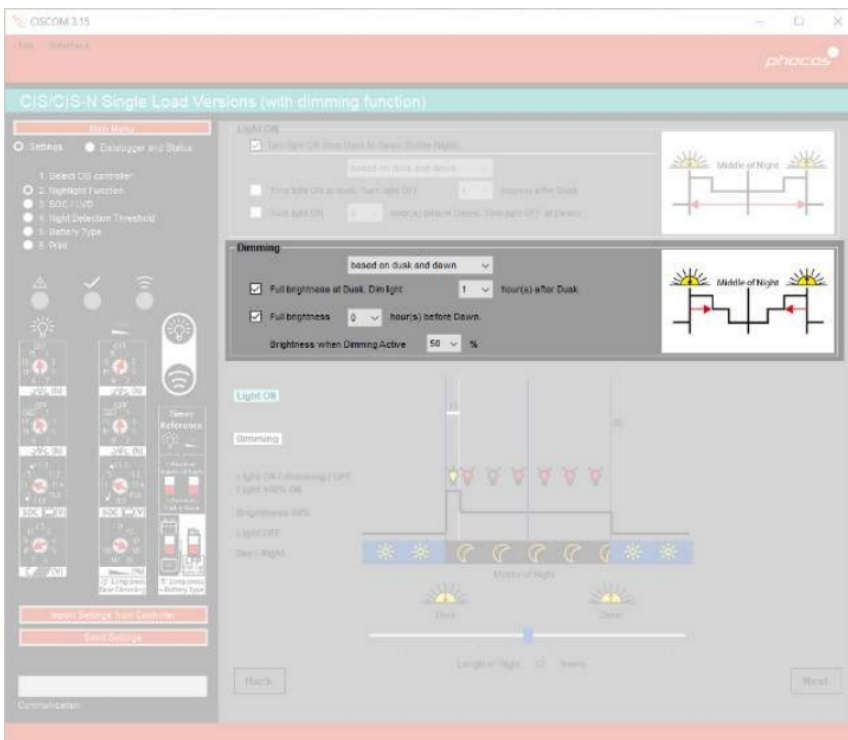
1. Navigate to the Nightlight Function menu.



2. In the Light ON menu section, select checkbox for “Turn light ON from Dusk to Dawn (Entire Night)”.



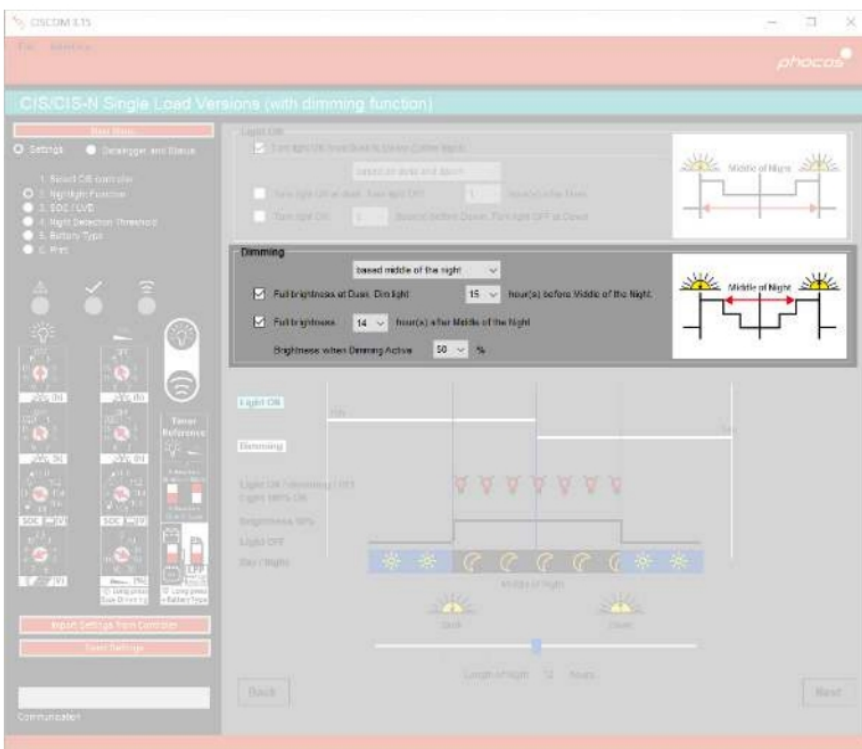
3. In the Dimming menu section, select the checkboxes for "Full brightness at Dusk. Dim light __ hour(s) after Dusk" and "Full brightness hour(s) before Dawn".



4. In the Dimming menu section, change the dropdown option from "based on dusk and dawn" to "based middle of the night".



5. In the Dimming menu section, change the hours dropdowns to their maximum values. Do not worry about the numbers being longer than the actual night length. The controller will still intelligently detect dusk and dawn based on PV voltage.

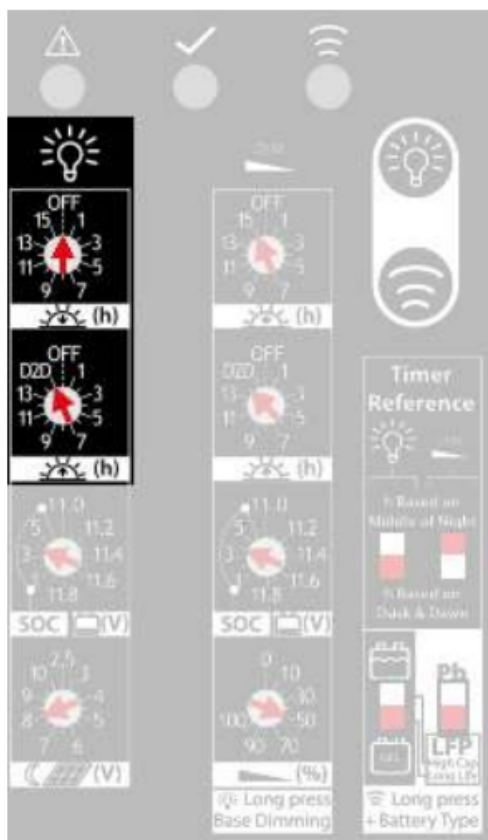


6. Finally, be sure to adjust any other settings as needed for the system before transmitting the settings to your CIS family controller.

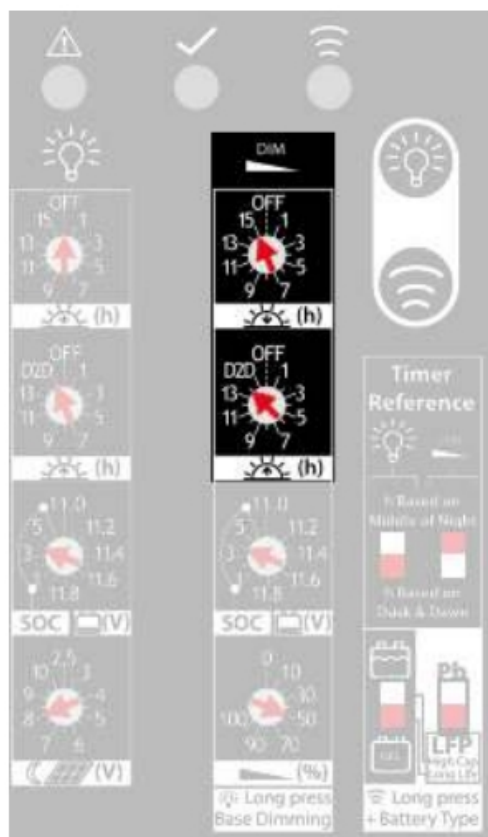
Dim All Night with CIS-CU

Programming a CIS family controller to dim all night using the CIS-CU is accomplished with a few quick knob and switch selections. Follow these adjustments to learn how.

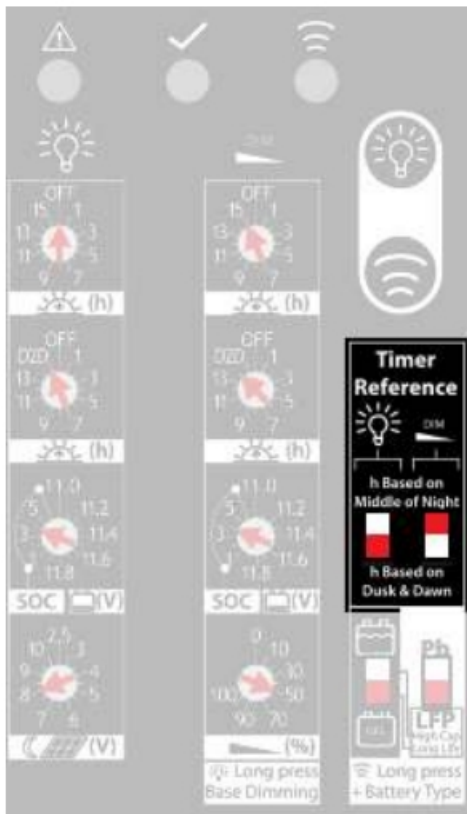
In column 1, change “Evening (h)” to OFF, and change “Morning (h)” to D2D.



In column 2, change “Evening (h)” to 15, and change “Morning (h)” to 14. (Note that the D2D setting only applies to dual load CIS controllers, not to dimming settings.) Do not worry about the numbers being longer than the actual night length. The controller will still intelligently detect dusk and dawn based on PV voltage.



In the Timer Reference area, select “h based on Dusk & Dawn” for Timer Reference 1, and select “h based on middle of night” for Timer Reference 2.



Finally, be sure to adjust any other settings as needed for the system before transmitting the settings to your CIS family controller.

Support

Copyright ©2020 Phocos. All rights reserved.
Subject to change without notice.
Version: 20210318

Phocos AG
Magirus-Deutz-Str.12
89077 Ulm, Germany
Phone +49 731 9380688-0
Fax +49 731 9380688-50
www.phocos.com
info@phocos.com



Documents / Resources

	<p>phocos CIS-CU Remote Configures CIS Charge Controllers [pdf] User Manual CIS-CU, CISCOM, Remote Configures CIS Charge Controllers, CIS-CU Remote Configures CIS Charge Controllers</p>
--	---

References

-  [Solar Power Charge Controllers, Inverters, and More | Phocos](#)