



# 2215 Klima Phobos and Deimos Starter Kit Instruction Manual

[Home](#) » [Phobos](#) » 2215 Klima Phobos and Deimos Starter Kit Instruction Manual 

## Contents

- [1 2215 Klima Phobos and Deimos Starter Kit](#)
- [2 REQUIRED MATERIALS](#)
- [3 ASSEMBLY](#)
- [4 Documents / Resources](#)
- [5 Related Posts](#)

# Phobos

## 2215 Klima Phobos and Deimos Starter Kit



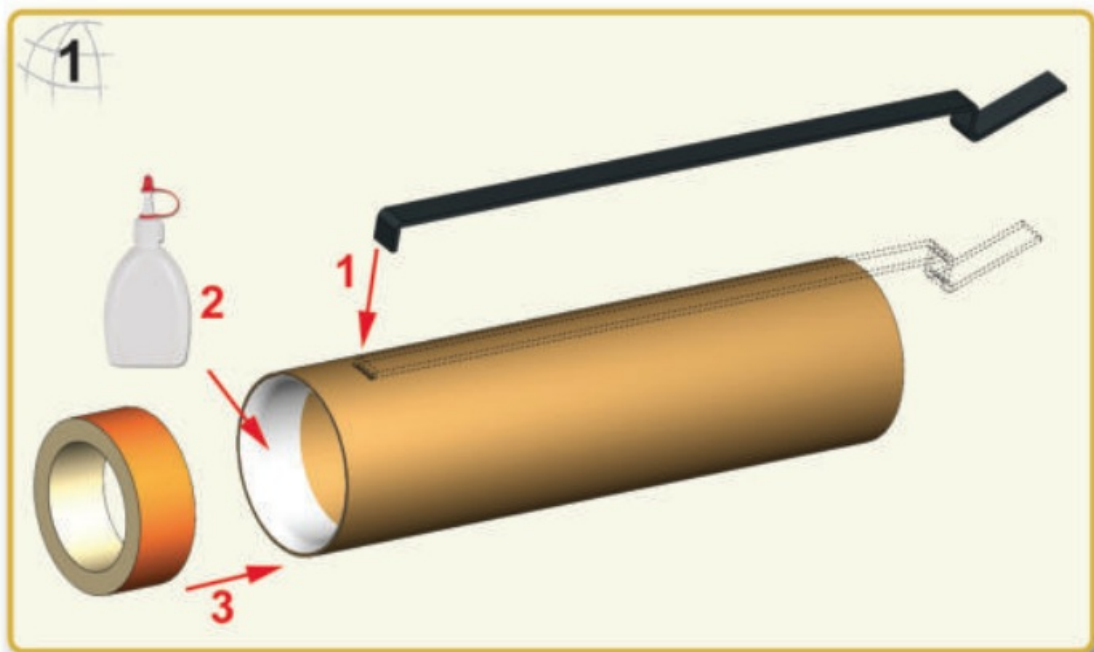
## REQUIRED MATERIALS

## Required materials for assembly

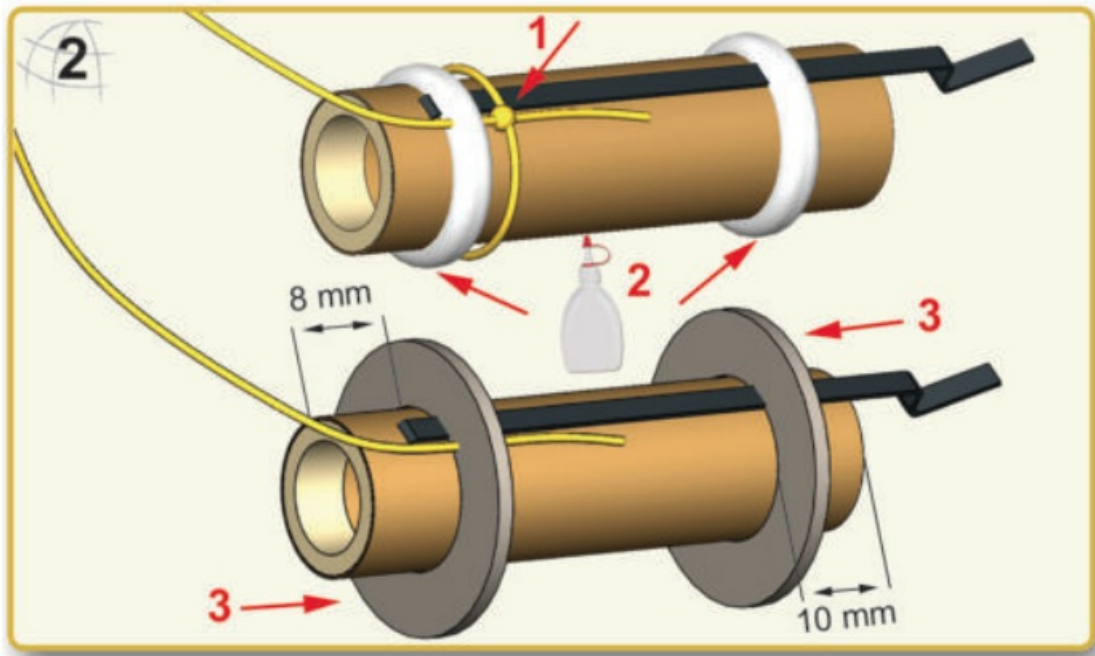


## ASSEMBLY

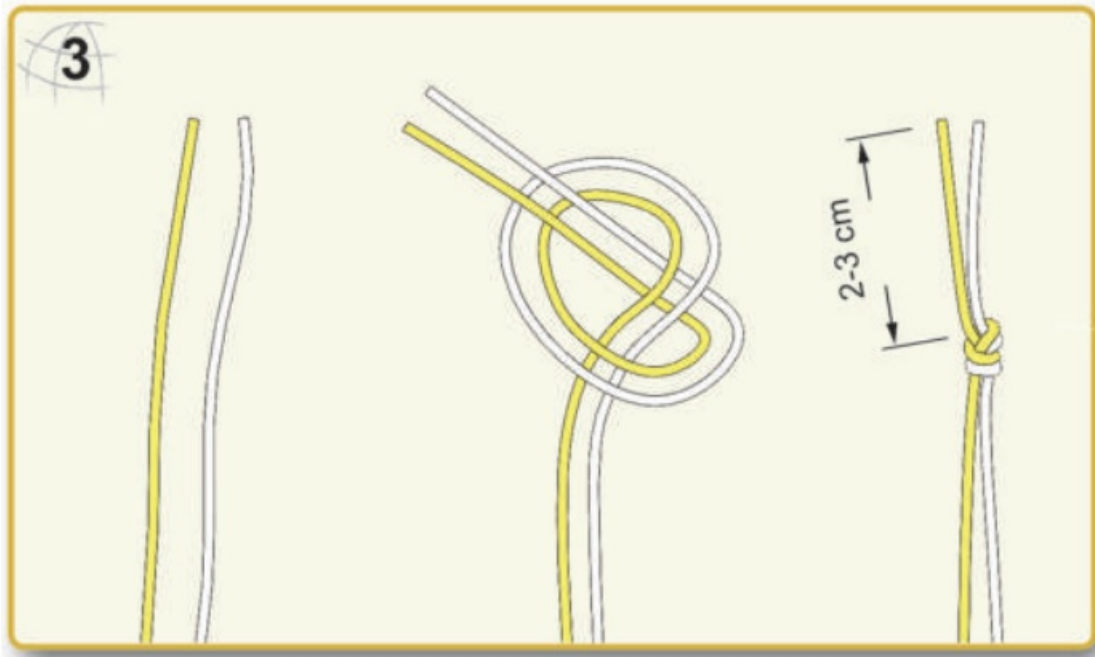
1. Attach motor clip through the small slit in the motor tube. Apply wood glue around inside edge of motor tube as shown. Insert red thrust ring into motor tube and position until seated against the motor clip.



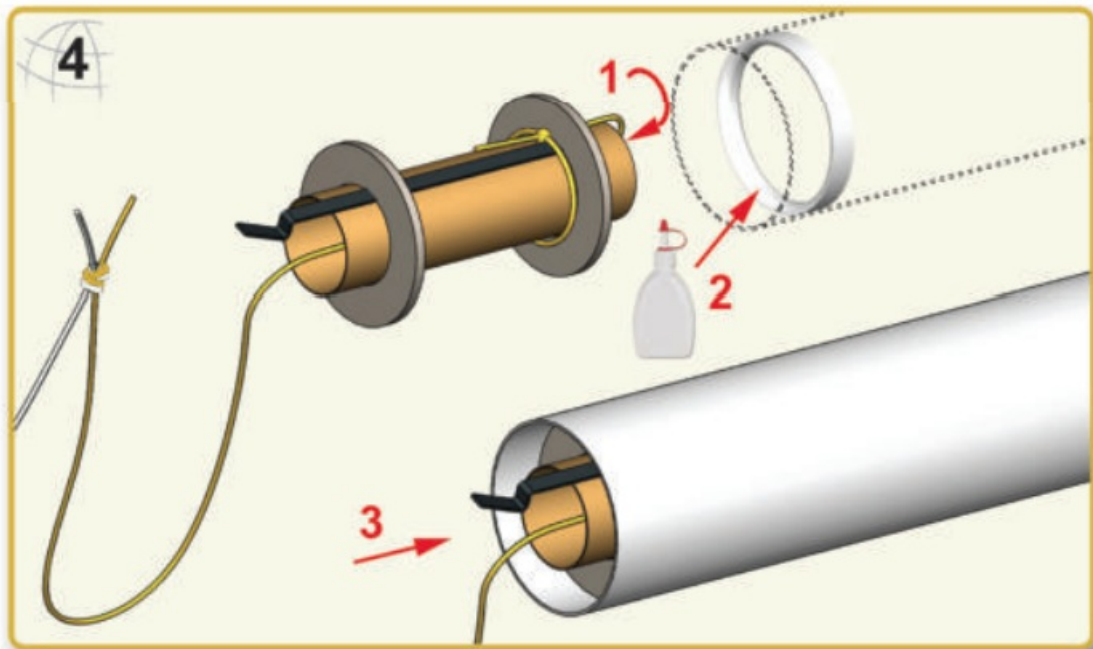
2. Tie one end of the Kevlar thread around the motor tube with a double knot. Apply a bead of glue around the motor tube in the area where the clip goes through the tube. Push one center- ing ring over the motor tube, Kevlar cord and the clip as shown. Then apply another bead of glue around the rear end of the motor tube and slide on the remaining centering ring until it is about 10-12 mm from the rear end. To complete the motor mount assembly, add a fillet of glue from each side of both centering rings and place aside to dry.



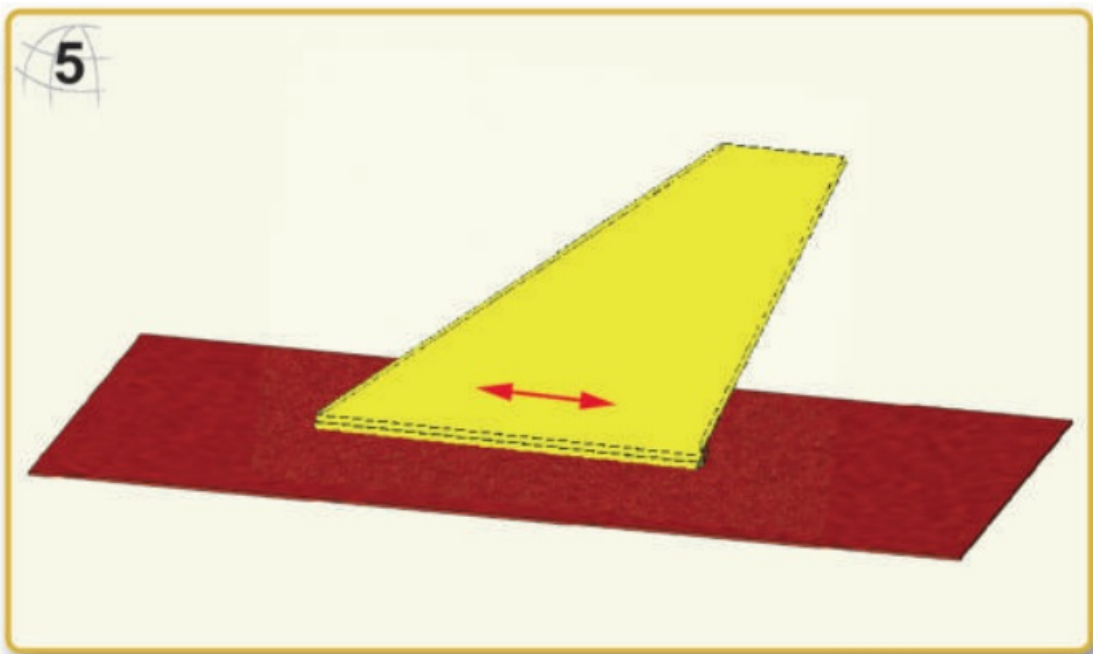
3. Place the Kevlar cord and the elastic shock cord next to each other so that the ends are even with each other. Tie them together with a single parallel overhand knot 2-3 cm from the end. Secure the knot with a spot of white glue.



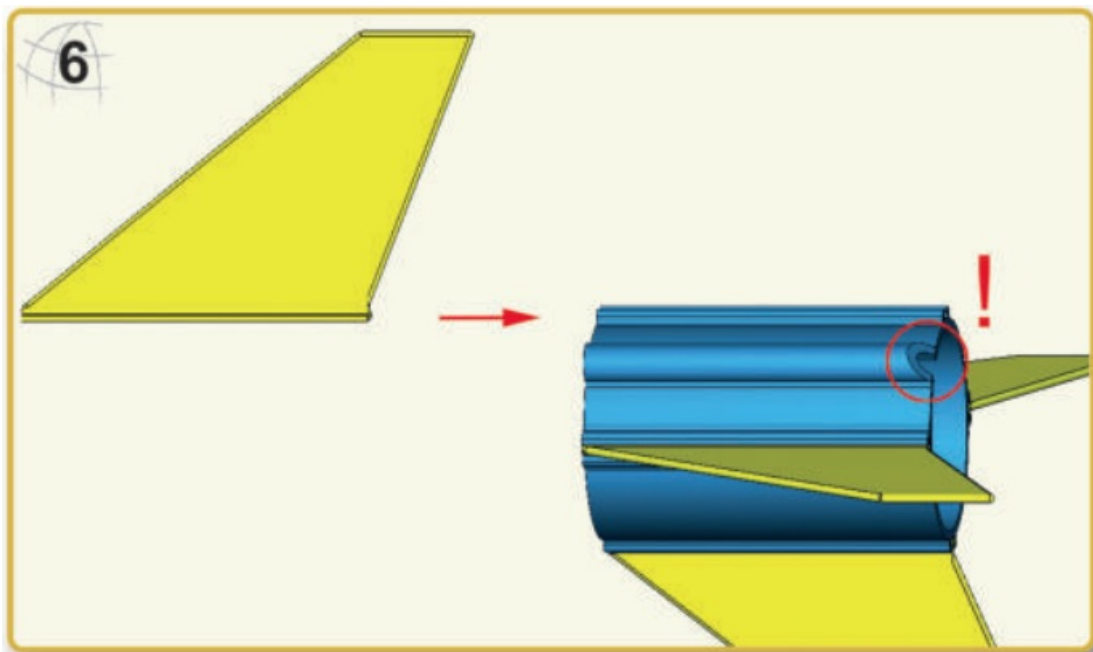
4. Feed the shock cord out the rear of the motor mount. Apply glue around inside of main body tube. Slide motor mount assembly with motor hook and shock cord facing to the body tube as pictured. Be sure that motor mount tube and body tube are flush. Then feed the shock cord back through the motor mount until it comes out of the front end of the body tube.



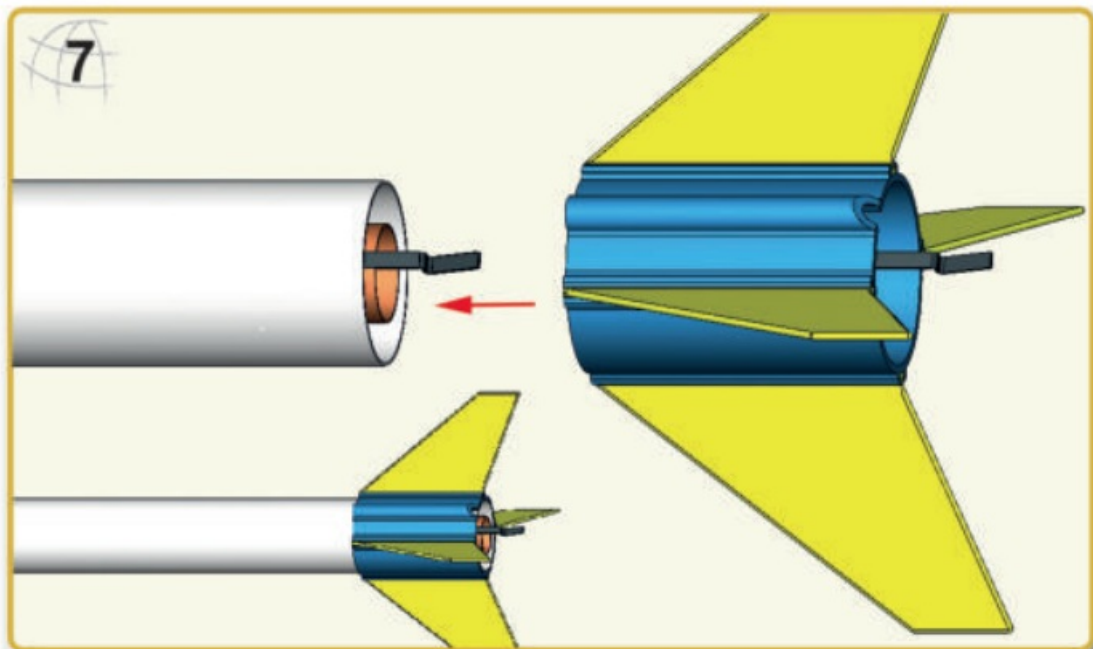
5. Place a piece of sand paper on to a flat surface to remove the flash as shown from the inner sides of the fins. This will make assembly of the fin can a lot easier.



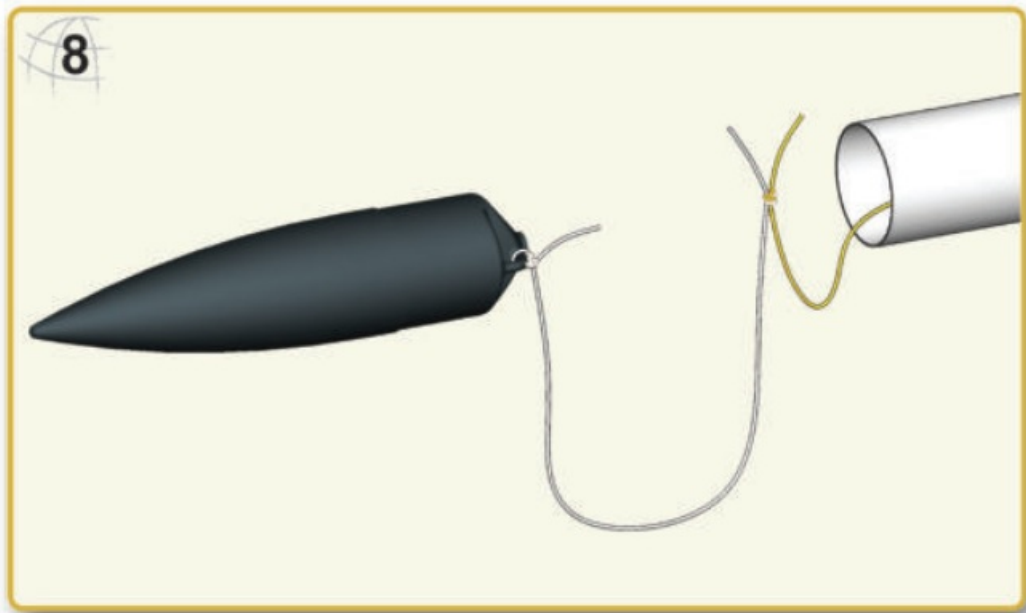
6. Take the fin can and look at the integrated launch lug. The square side is the front end and the slanted side of the launch lug represents the rear end of the fin can. Then taking one fin a time, slide each fin from its back end first in to one of the grooves until flush. Glue is not required. If a fin does not slide in easily during the first half length, it could be on the wrong way around.



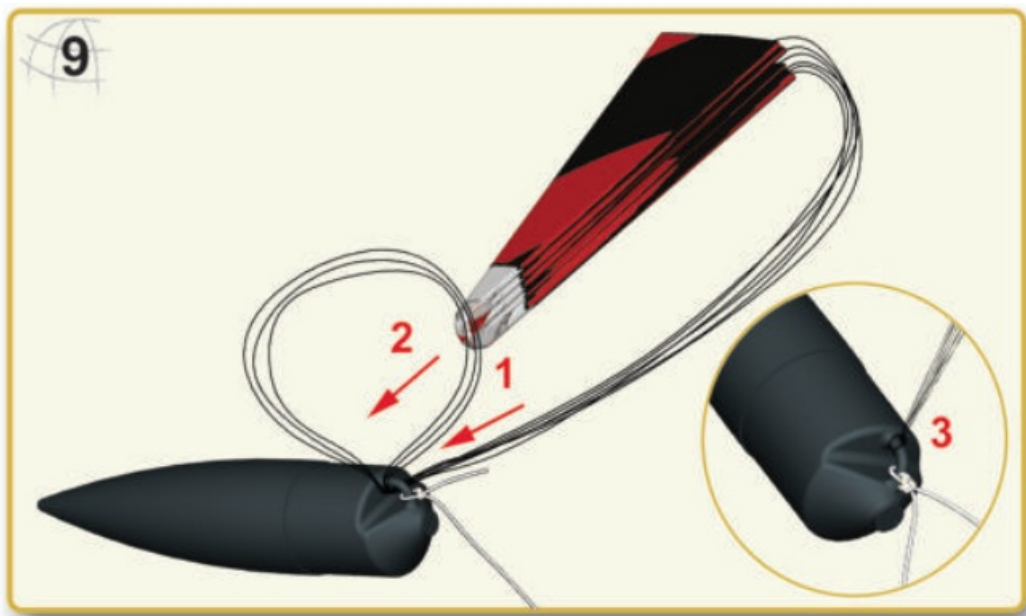
7. Align the launch lug to the motor hook and slide the fin can over the body tube until both rear ends are flush with each other. Again, no glue is required for this step.



8. Use two overhand knots to attach the end of the white shock cord to the nose cone. If there's any excess plastic in the eyelet push it out with a dowel or screwdriver.




9. Assemble parachute according to instructions printed on it. Pass the shroud line loops through the eyelet on the nose cone. Pass parachute through the loop ends and pull lines tightly against the eyelet.



10. Apply stickers as shown on picture. Smooth out air bubbles from center to edge.



Documents / Resources

	<p><a href="#">Phobos 2215 Klima Phobos and Deimos Starter Kit</a> [pdf] Instruction Manual 2215 Klima Phobos and Deimos Starter Kit, 2215, Klima and Deimos Starter Kit, Deimos Starter Kit, Starter Kit</p>
---	---

Manuals+.