



PHILIPS Wiz Wi-Fi Smart LED User Manual

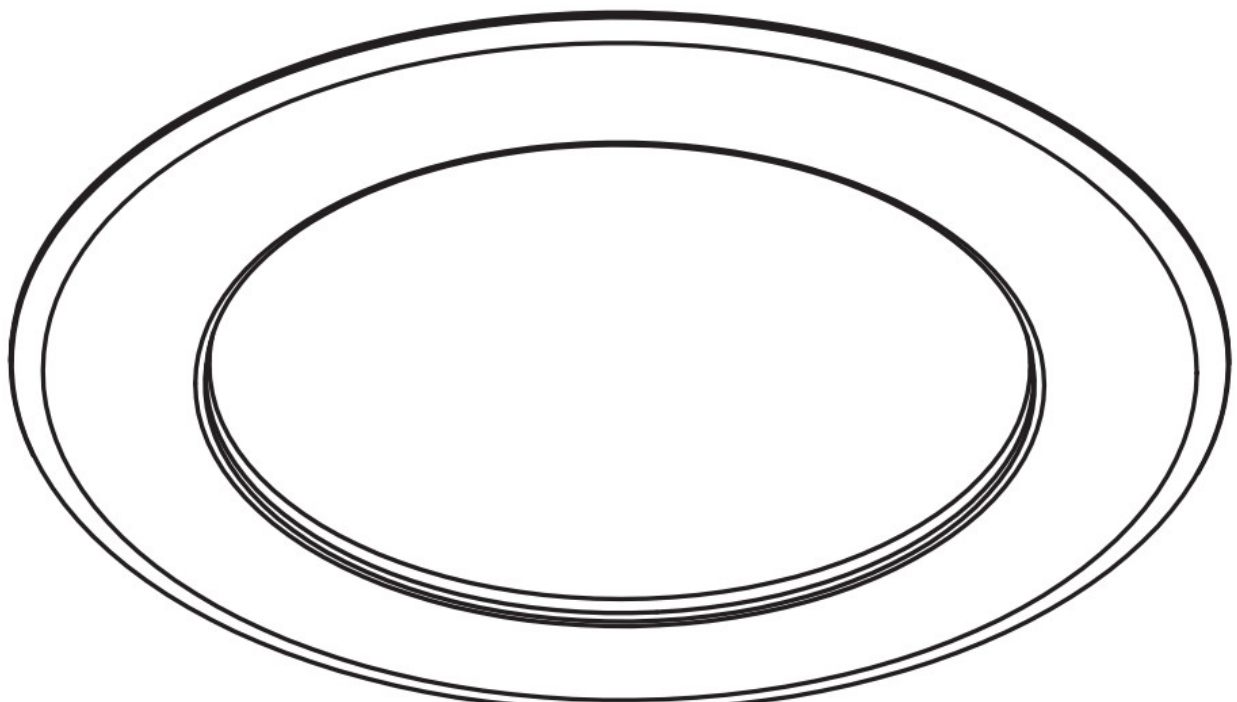
[Home](#) » [Philips](#) » PHILIPS Wiz Wi-Fi Smart LED User Manual 

PHILIPS

WIZ

CONNECTED

Wi-Fi Smart LED
User Manual

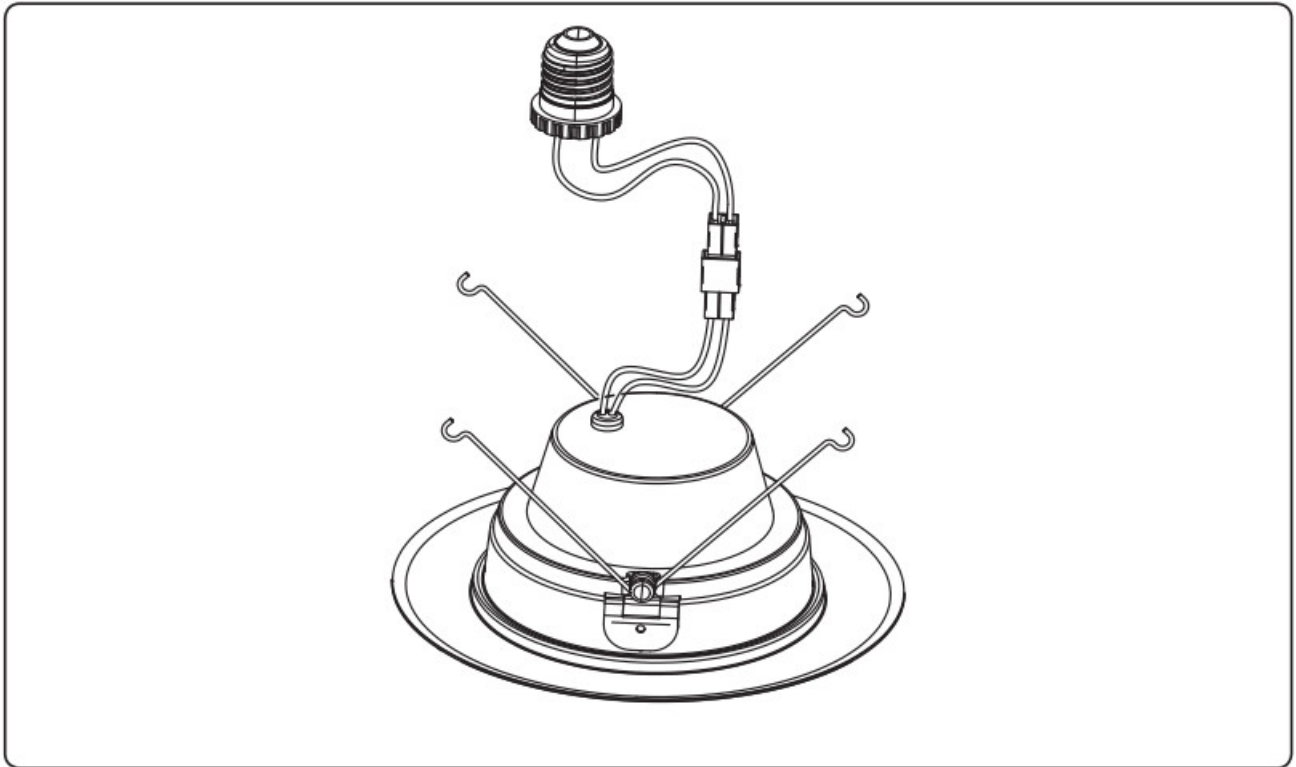


9290022670/9290022671
9290025732
9290026178

Contents

- [1 Wiz Wi-Fi Smart LED](#)
- [2 To Install](#)
- [3 Documents / Resources](#)
- [4 Related Posts](#)

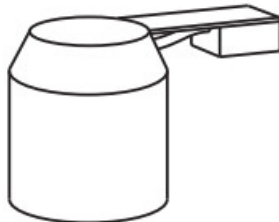
Wiz Wi-Fi Smart LED



Minimum lamp compartment dimensions:

135mm(5 1/8 inch)(Diameter) x 190mm(7 1/2 inch)(Height) when used in 5 inch recessed luminaire; 154mm(6 inch)(Diameter) x 190mm(7 1/2 inch)(Height) when used in 6 inch recessed luminaire.

Excl.



WARNING – Risk of fire or electric shock. LED Retrofit Kit installation requires knowledge of luminaires electrical systems. If not qualified, do not attempt installation. Contact a qualified electrician.

WARNING – Risk of fire or electric shock. Install this kit only in luminaires that have the construction features and dimensions shown in the photographs and/or drawings and where the input rating of the retrofit kit does not exceed the input ratings of the luminaire.

Do not make or alter any open holes in an enclosure of wiring or electrical components during kit installation.

WARNING – To prevent wiring damage or abrasion, do not expose wiring to edges of sheet metal or other sharp objects.

THIS RETROFIT KIT IS ACCEPTED AS A COMPONENT OF A LUMINAIRE WHERE THE SUITABILITY OF THE COMBINATION SHALL BE DETERMINED BY AUTHORITIES HAVING JURISDICTION.

Please examine all parts that are not intended to be replaced by the retrofit kit for damage and replace any damaged parts prior to installation of the retrofit kit.

SUITABLE FOR TYPE IC OR NON-IC LUMINAIRES

This lamp is only compatible with provided or other specified controls listed in these instructions for proper functionality. Product not suitable for use with dimmers, dimming via WiZ app only.

To Install

Before retrofit, check if the target luminaire has means for spring bracket of the luminaire to be mount on, other than friction only.

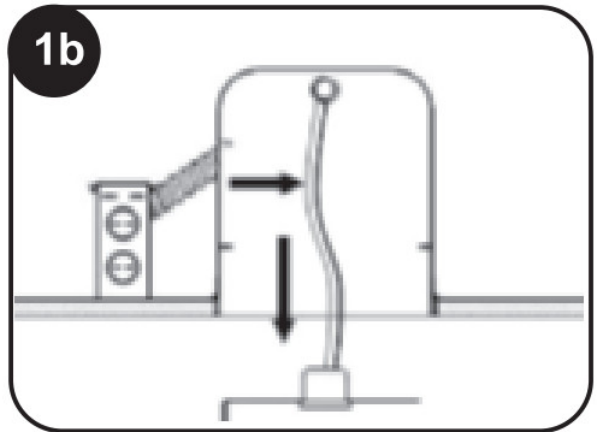
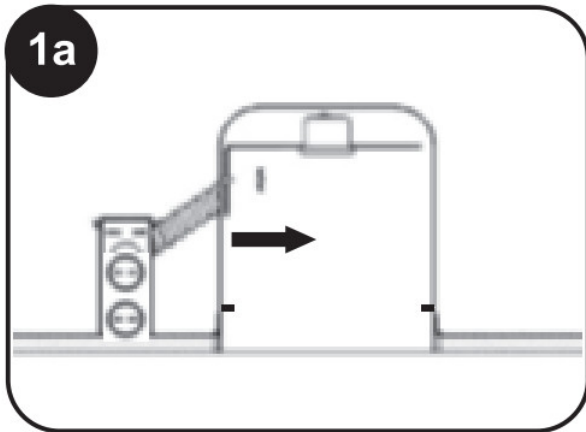
Step 1

Turn off the circuit breaker which controls the fixture(s). Remove the existing bulb cautiously since the bulb may be hot if it was recently operated.

Disassemble the existing trim by pulling down on the trim, and removing the trim's torsion springs from the spring brackets in the recessed housing.

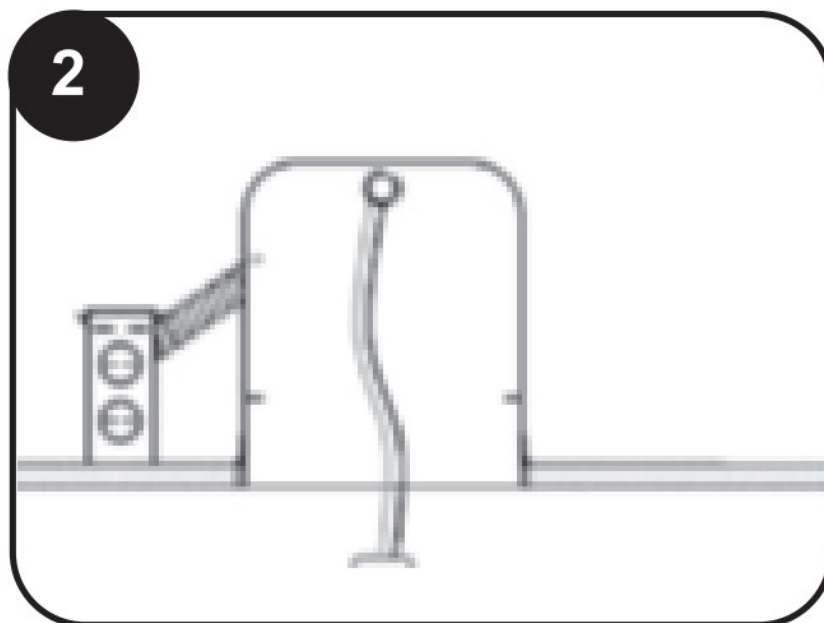
Step 2

If the existing lamp socket is held by a mounting bracket, the bracket can be easily removed by loosening (or removing) the wing nuts used to secure it (Figure 1 a). Next remove the bracket as shown in Figures 1b.



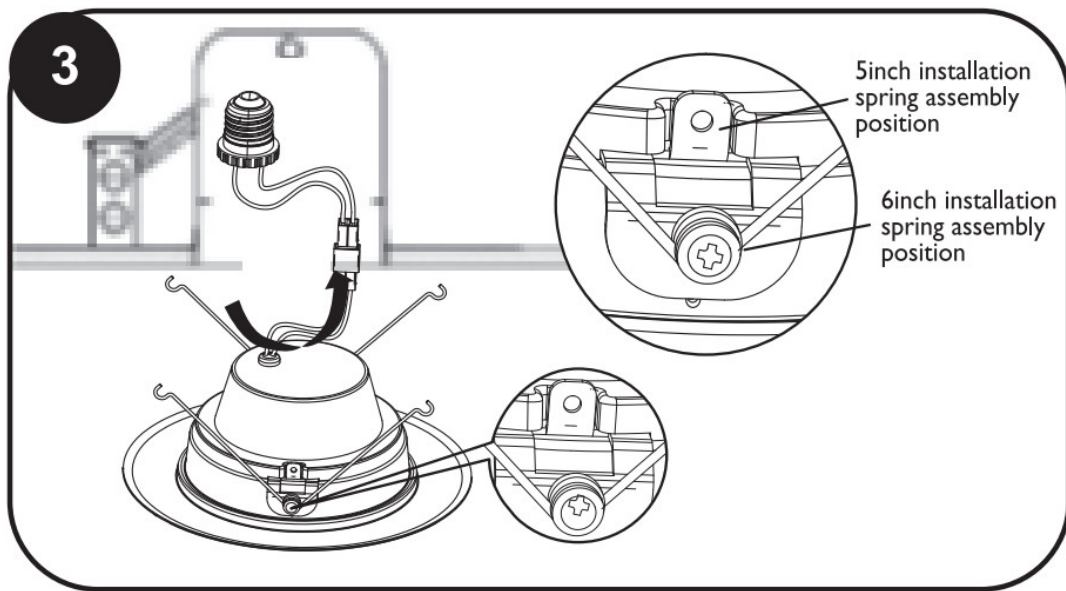
Step 3

Attach the label onto the inside of housing. Remove the lamp socket from the mounting bracket, as the RDL6 does not require a mounting bracket (Figure 2). You are now ready to install the RDL6 fixture.



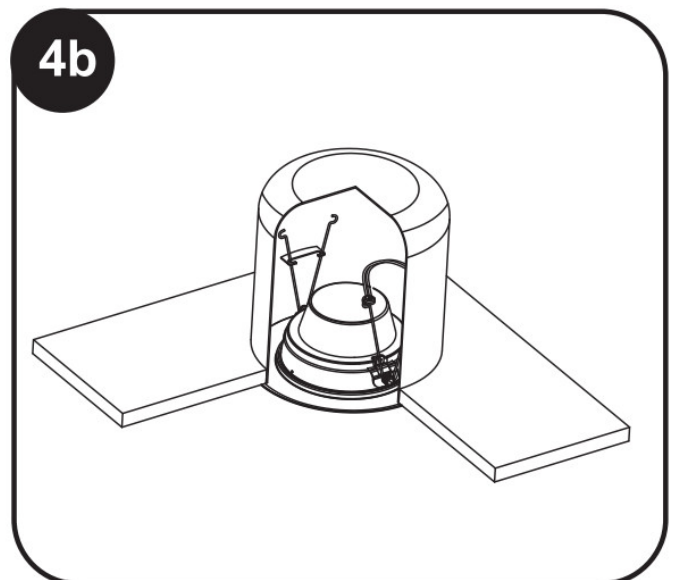
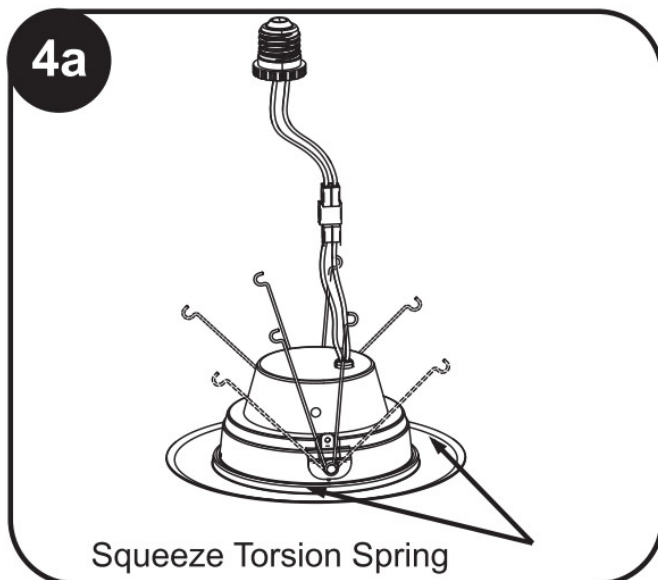
Step 4

Assemble the RDL6 into the socket (Figure 3). For 5inch or 6inch installation, assemble the screw to the 5inch or 6inch installation spring assembly position as Figure 3.



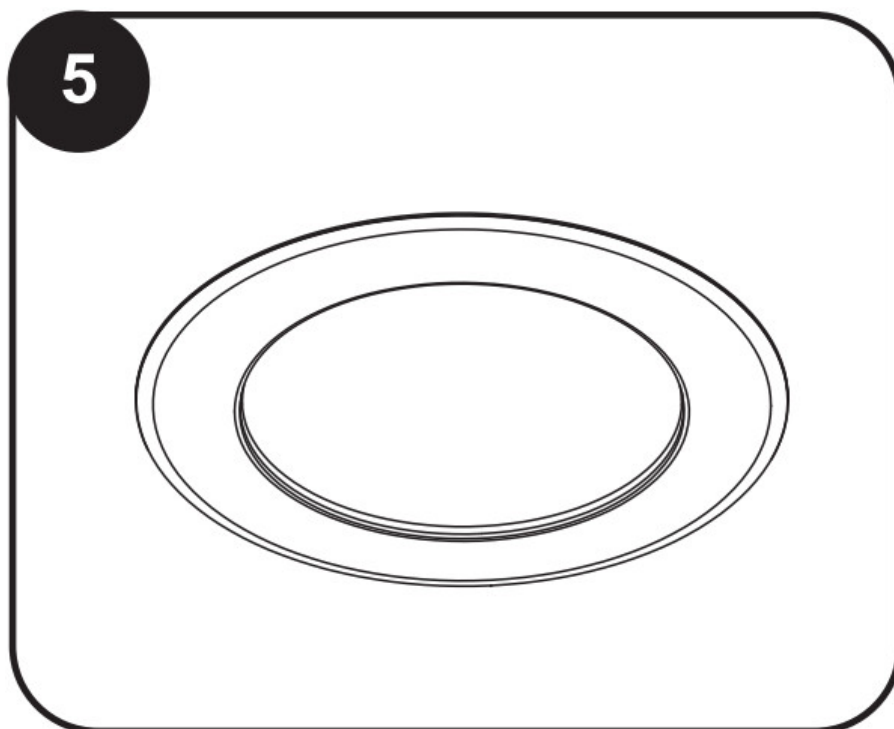
Step 5

Squeeze the torsion springs together as shown (Figure 4a) and install them into torsion spring brackets inside the recessed housing (Figure 4b).



Step 6

Once the torsion springs are in the brackets, carefully push the RDL6 into the fixture until it is flush with the ceiling surface (Figure 5).




Philips and the Philips shield emblem are registered trademarks of Koninklijke Philips N.V.

© 2021 Signify Holding



Documents / Resources

	<p>PHILIPS Wiz Wi-Fi Smart LED [pdf] User Manual Wiz Wi-Fi Smart LED, Wiz, Wi-Fi Smart LED, Smart LED, LED</p>
---	--