

PHILIPS TAB7207 2.1 Channel Soundbar with Wireless Subwoofer User Guide

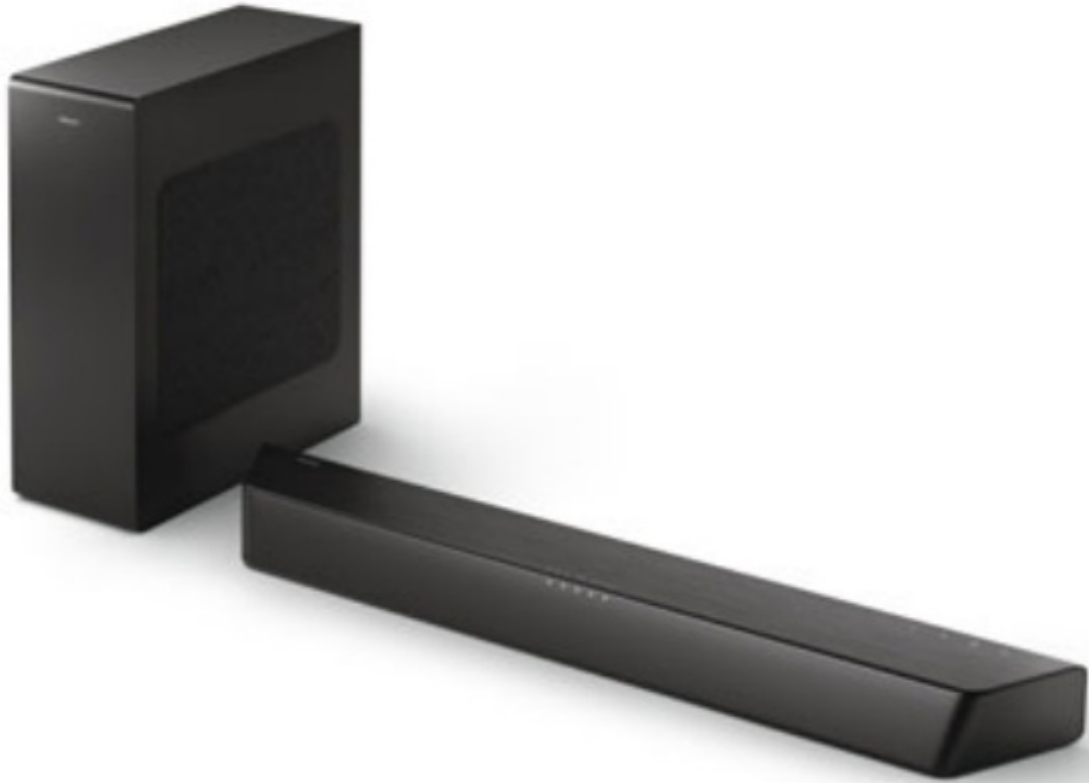
[Home](#) » [Philips](#) » PHILIPS TAB7207 2.1 Channel Soundbar with Wireless Subwoofer User Guide 

Contents

- [1 PHILIPS TAB7207 2.1 Channel Soundbar with Wireless Subwoofer](#)
- [2 Rich sound for every detail](#)
- [3 Highlights](#)
 - [3.1 2.1 channels. 8" subwoofer](#)
 - [3.2 Wider soundstage](#)
 - [3.3 Roku TV Ready™](#)
- [4 Specifications](#)
- [5 Documents / Resources](#)
 - [5.1 References](#)
- [6 Related Posts](#)

PHILIPS

PHILIPS TAB7207 2.1 Channel Soundbar with Wireless Subwoofer



Rich sound for every detail

This fantastic 2.1 channel soundbar with wirelessly connecting subwoofer brings true cinema sound into your living room. Dolby Digital Plus delivers incredible surround sound and two extra tweeters let you widen the soundstage even further.

Immersive cinema experience

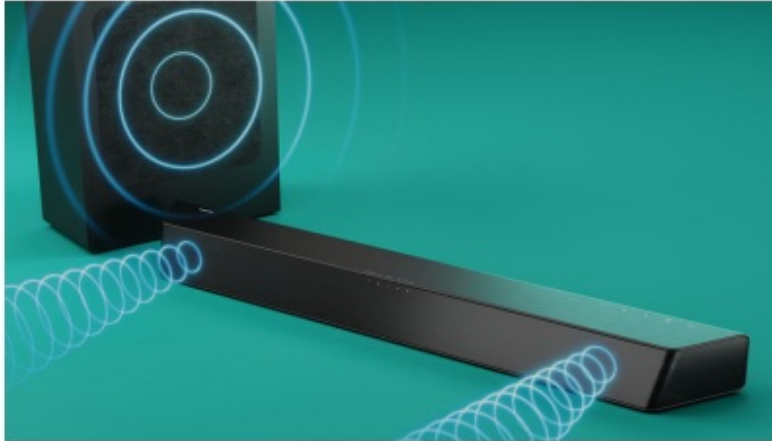
- Dolby Digital Plus delivers cinema surround sound
- 2.1 channels. 8" wireless subwoofer for deeper bass
- Two angled speakers for wider sound

Connectivity and convenience

- Conveniently connect all of your favourite sources
- Connect via HDMI ARC, Optical in, BT, Audio in or USB
- Stadium EQ Mode. Bring the stadium home
- HDMI ARC. Control the soundbar with your TV remote
- Roku TV Ready™. Simple setup. One remote Distinctive looks. Easy control
- Distinctive geometric design. Easy placement
- Operate via touch controls on soundbar
- Place on your TV table, the wall, or any flat surface
- Philips Easylink for convenient control

Highlights

2.1 channels. 8" subwoofer



This soundbar's 2.1 channels and wirelessly connecting, 8" subwoofer put you in the center of the action, surrounding you in rich and virtual surround sound no matter what you're watching or listening to. Pick out every detail and lose yourself in the mix!

Dolby Digital Plus

Virtualize the cinema experience in your home. This soundbar utilizes Dolby Digital Plus technology to immerse you in waves of virtual surround sound. Crystal clarity and great detail mean you can engage with your media like never before.

Wider soundstage



Widen the sound! Two extra tweeter speakers at either end of the soundbar broaden the audio to give you a clear separation of instruments. Pick them out easily and hear every instrument in the orchestra like you're really in the hall!

Stadium EQ Mode

Experience the excitement of live sports, right there in your living room. Stadium EQ Mode immerses you in ambient crowd noise, just like you were sitting in the stadium! Be thrilled by every crucial moment and still hear crystal-clear commentary.

Connect your favourite sources

Stream playlists from your mobile device via Bluetooth. Your media sounds richer, deeper, and clearer through this

phenomenal soundbar and subwoofer. You can also connect via Audio in, Optical in, HDMI ARC or use a USB drive for music.

Roku TV Ready™



This Philips Soundbar is Roku TV Ready certified. That means you'll enjoy a simple setup, one remote, and quick settings when you pair it with a Roku TV. Roku, the Roku logo, Roku TV, Roku TV Ready, and the Roku TV Ready logo are trademarks and/or registered trademarks of Roku, Inc. This product is Roku TV Ready-supported in the United States, Canada, Mexico, the United Kingdom, and Brazil. Countries are subject to change. For the most current list of countries in which this product is Roku TV Ready-supported, please email rokutvready@roku.com.

Philips Easylink

This fantastic soundbar features Philips Easylink technology for maximum ease and convenience. Whether you want to adjust the EQ modes, bass, treble, volume settings on your device or soundbar, only one remote control is needed!

Soundbar 2.1 with wireless subwoofer

520W Max 2.1 CH wireless subwoofer, Dolby Digital Plus, HDMI ARC

Specifications

Loudspeakers

- Number of sound channels: 2.1
- Front drivers: 2 full range (L+R), 2 tweeters (L+R)
- Soundbar freq range: 150 – 20k Hz
- Soundbar impedance: 8 ohm
- Subwoofer type: Active, Wireless subwoofer
- Number of woofers: 1
- Woofer diameter: 8"
- External subwoofer enclosure: Bass reflex
- Subwoofer freq range: 35 – 150 Hz
- Subwoofer impedance: 3 ohm

Connectivity

- Bluetooth: Receiver

- Bluetooth version: 5.0
- Bluetooth profiles: A2DP, AVRCP, Multipoint (Multipair) support, Streaming Format: SBC
- EasyLink (HDMI-CEC)
- HDMI Out (ARC) x 1
- Optical input x 1
- Audio in: 1x 3.5mm
- USB playback
- Wireless speaker connection: Subwoofer
- DLNA Standard: No
- Smart Home: None

Sound

- Speaker system output power: 520W max / 260W RMS
- Total harmonic distortion: <=10%
- Equalizer settings: Movie, Music, Voice, Stadium
- Sound Enhancement: Treble and Bass Control

Supported Audio Formats

- HDMI ARC: Dolby Digital, Dolby Digital plus, LPCM 2ch
- Optical: Dolby Digital, LPCM 2ch
- Bluetooth: SBC
- USB: MP3, WAV, FLAC

Convenience

- EasyLink (HDMI-CEC): Audio Return Channel, Automatic audio input mapping, One touch standby
- Night mode: No
- Remote Control

Design

- Color: Black
- Wall mountable

Power

- Auto standby
- Main unit power supply: 100-240V AC, 50/60 Hz
- Main unit standby power: < 0.5 W
- Subwoofer power supply: 100-240V AC, 50/60 Hz
- Subwoofer standby power: < 0.5 W

Accessories

- Included accessories: Power cord, Remote Control (with battery), Wall mount bracket, Quick start guide, World Wide Warranty leaflet

Dimensions

- Main Unit (W x H x D): 800 x 65 x 106 mm
- Main Unit Weight: 2.1 kg
- Subwoofer (W x H x D): 150 x 400 x 300 mm
- Subwoofer Weight: 4.74 kg

Packaging dimensions

- UPC: 8 40063 20261 0
- Packaging dimensions (W x H x D): 18.1 x 7.3 x 38.2 inch
- Packaging dimensions (W x H x D): 46 x 18.5 x 97 cm
- Gross weight: 8.64 kg
- Gross weight: 19.048 lb
- Nett weight: 7.139 kg
- Nett weight: 15.739 lb
- Tare weight: 1.501 kg
- Tare weight: 3.309 lb
- Packaging type: Carton
- Type of shelf placement: Laying
- Number of products included: 1

Outer Carton


- GTIN: 1 08 40063 20261 7
- Number of consumer packagings: 2

© 2022 Koninklijke Philips N.V.

All Rights reserved.

Specifications are subject to change without notice. Trademarks are the property of Koninklijke Philips N.V. or their respective owners. www.philips.com

Documents / Resources

	<p>PHILIPS TAB7207 2.1 Channel Soundbar with Wireless Subwoofer [pdf] User Guide TAB7207, 2.1 Channel Soundbar with Wireless Subwoofer, TAB7207 2.1 Channel Soundbar with Wireless Subwoofer, 2.1 Channel Soundbar, Soundbar</p>
---	---

References

-  [Philips - United States | Philips](#)

Manuals+