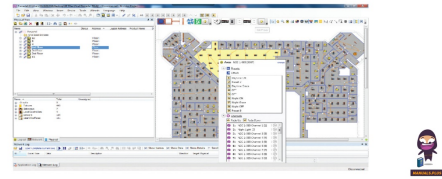


PHILIPS System Builder Commissioning Software



PHILIPS System Builder Commissioning Software User Guide

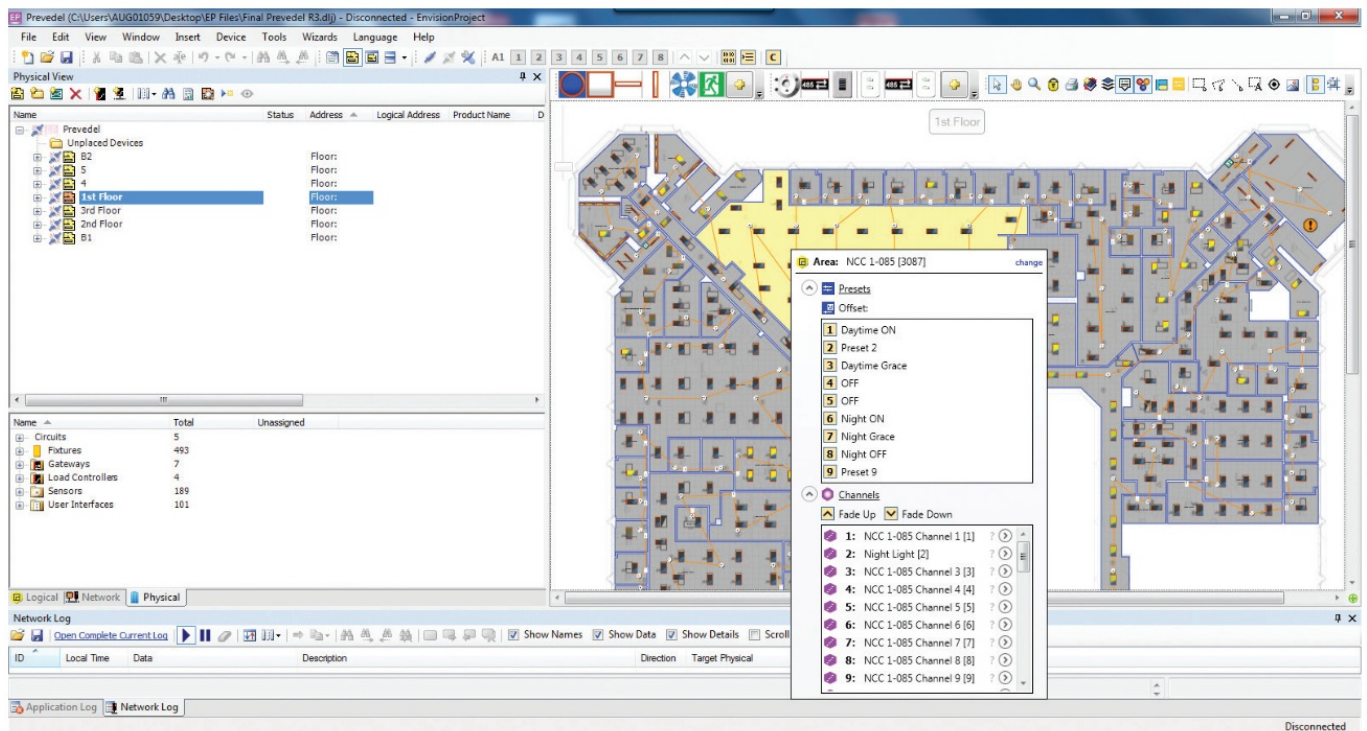
[Home](#) » [Philips](#) » PHILIPS System Builder Commissioning Software User Guide 

Contents

- 1 PHILIPS System Builder Commissioning Software
- 2 Product Information
- 3 Product Usage Instructions
- 4 Frequently Asked Questions
- 5 Fast and efficient lighting control system setup
- 6 Philips Dynalite System Builder
- 7 Specifications
- 8 Documents / Resources
 - 8.1 References



PHILIPS System Builder Commissioning Software



Product Information

- **Product Name:** System Builder Commissioning Software
- **Description:** Fast and efficient lighting control system setup.
- **Manufacturer:** Philips Dynalite

Specifications:

- **Software Requirements:**
 - Operating System: Microsoft.NET, Windows 8.1, Windows 10
 - Version: 4.8 or later
- **Hardware Requirements:**
 - Computer: PC (or Mac running Windows)
 - Processor: Intel (or compatible) i5 2.5 GHz dual core or higher
 - RAM: 4 GB
 - HDD: 10 GB available
 - Display Resolution (Minimum): 1024×768
 - Display Resolution (Recommended): 1920×1080
- **Note:** Hardware requirements may vary for larger projects.

Product Usage Instructions

1. Ensure your computer meets the specified software and hardware requirements.
2. Contact your local Philips representative for ordering codes to obtain the software.
3. Install the System Builder Commissioning Software on your computer.
4. Launch the application and follow the on-screen instructions to set up your lighting control system.
5. Refer to the user-friendly interface for an intuitive experience in commissioning your lighting system.

Frequently Asked Questions

- **Q: Can I install the System Builder software on a Mac?**

- A: Yes, you can run the System Builder software on a Mac that is running Windows operating system.

- **Q: What should I do if my computer does not meet the hardware requirements?**

- A: For optimal performance, it is recommended to use a computer that meets or exceeds the specified hardware requirements. Using a computer below the requirements may result in performance issues.

Fast and efficient lighting control system setup

Designed with the system installer and integrator in mind, System Builder is a comprehensive commissioning platform from Philips Dynalite. This user-friendly and intuitive application sets a new benchmark for efficient lighting control system setup

Philips Dynalite System Builder

Fast and efficient lighting control system setup

- New and improved set-up templates – Provides a simple and intuitive interface for access to advanced system functionality, allowing flexibility to modify, customize or create specific tasks if required.
- Faster commissioning times – Includes a series of common device settings based on typical lighting control scenarios. Tailor to your project, save and replicate across other sites as required.
- Virtual panel – Control any area of the system directly, run sequences and test final operations.
- Complex functionality made simple – Manage logical grouping of lamps and other system hardware elements using simple graphical representations.
- Maintenance made easy – Print out project floor plans with fixture details, including DALI addresses, to facilitate maintenance planning.
- Live data details – The status of each lamp is visually represented using icons, which change color to reflect current lighting levels.
- Monitor the whole system – Inbuilt network monitor details and logs all Philips Dynalite network traffic, as well as DALI network traffic.

Specifications

Due to continuous improvements and innovations, specifications may change without notice.

Software Requirements

- Operating System Windows 8.1
- Windows 10
- Microsoft.NET Version 4.8 or later

Hardware Requirements*

- Computer PC (or Mac running Windows)
- Processor Intel (or compatible) i5 2.5 GHz dual core or higher

- RAM \geq 4 GB
- HDD \geq 10 GB available
- Display Resolution (Minimum) \geq 1024×768
- Display Resolution (Recommended) \geq 1920×1080

These requirements apply to commissioning small projects. Larger projects may require improved hardware specification.

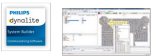
Ordering Codes

Please contact your local Philips representative



All rights reserved. Specifications are subject to change without notice. No representation or warranty as to the accuracy or completeness of the information included herein is given and any liability for any action in reliance thereon is disclaimed. Philips and the Philips Shield Emblem are registered trademarks of Koninklijke Philips N.V. All other trademarks are owned by Signify Holding or their respective owners

- www.dynalite.com

Documents / Resources

 <p>System Builder Commissioning Software</p> <p>Fast and efficient lighting control system setup. Designed with the system installer and integrator in mind, System Builder is a comprehensive commissioning software for Philips Dynalite products. This user-friendly and intuitive application sets a new benchmark for efficient lighting system commissioning.</p>	<p>PHILIPS System Builder Commissioning Software [pdf] User Guide</p> <p>System Builder Commissioning Software, Builder Commissioning Software, Commissioning Software, Software</p>
--	--

References

-  [Your request has been blocked. This could be due to several reasons.](#)
-  [Philips Dynalite - Lighting Controls, Lighting Management](#)
- [User Manual](#)

Manuals+, [Privacy Policy](#)

This website is an independent publication and is neither affiliated with nor endorsed by any of the trademark owners. The "Bluetooth®" word mark and logos are registered trademarks owned by Bluetooth SIG, Inc. The "Wi-Fi®" word mark and logos are registered trademarks owned by the Wi-Fi Alliance. Any use of these marks on this website does not imply any affiliation with or endorsement.