



## PHILIPS SRP2018 Universal Remote Control User Guide

[Home](#) » [Philips](#) » PHILIPS SRP2018 Universal Remote Control User Guide 

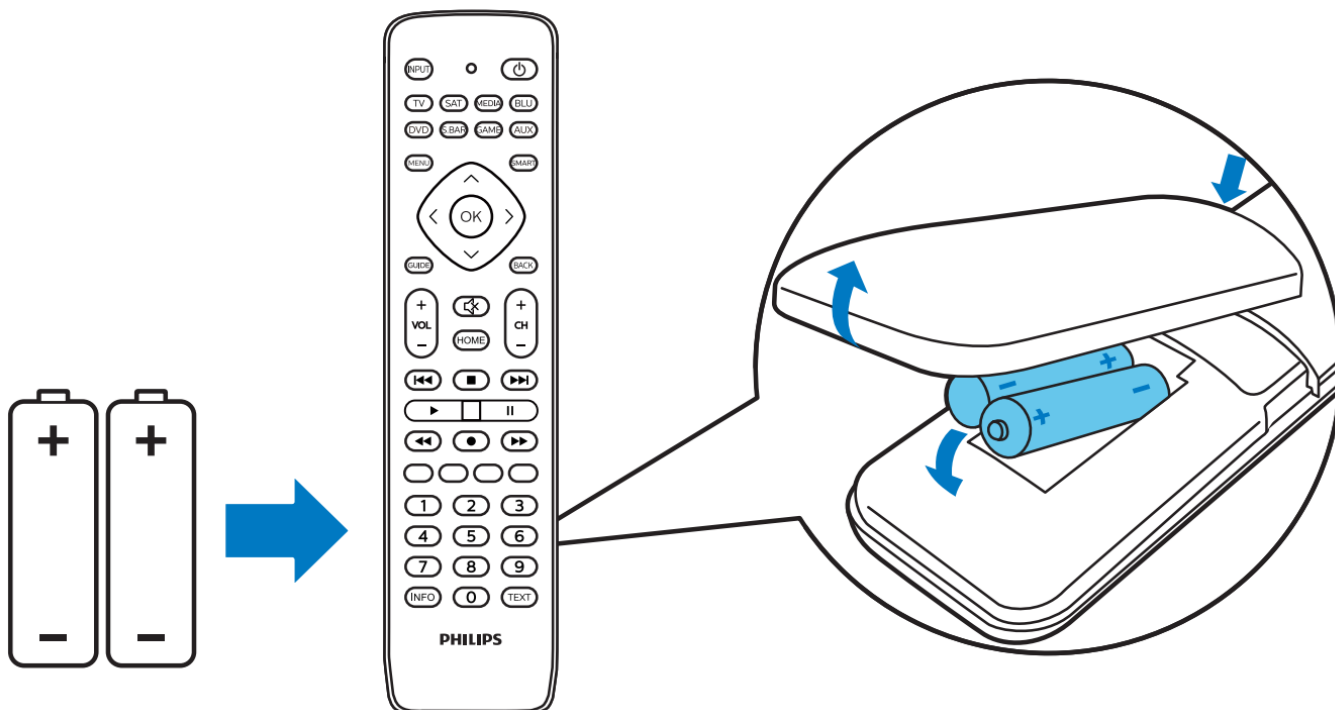
PHILIPS SRP2018 Universal Remote Control



## Contents

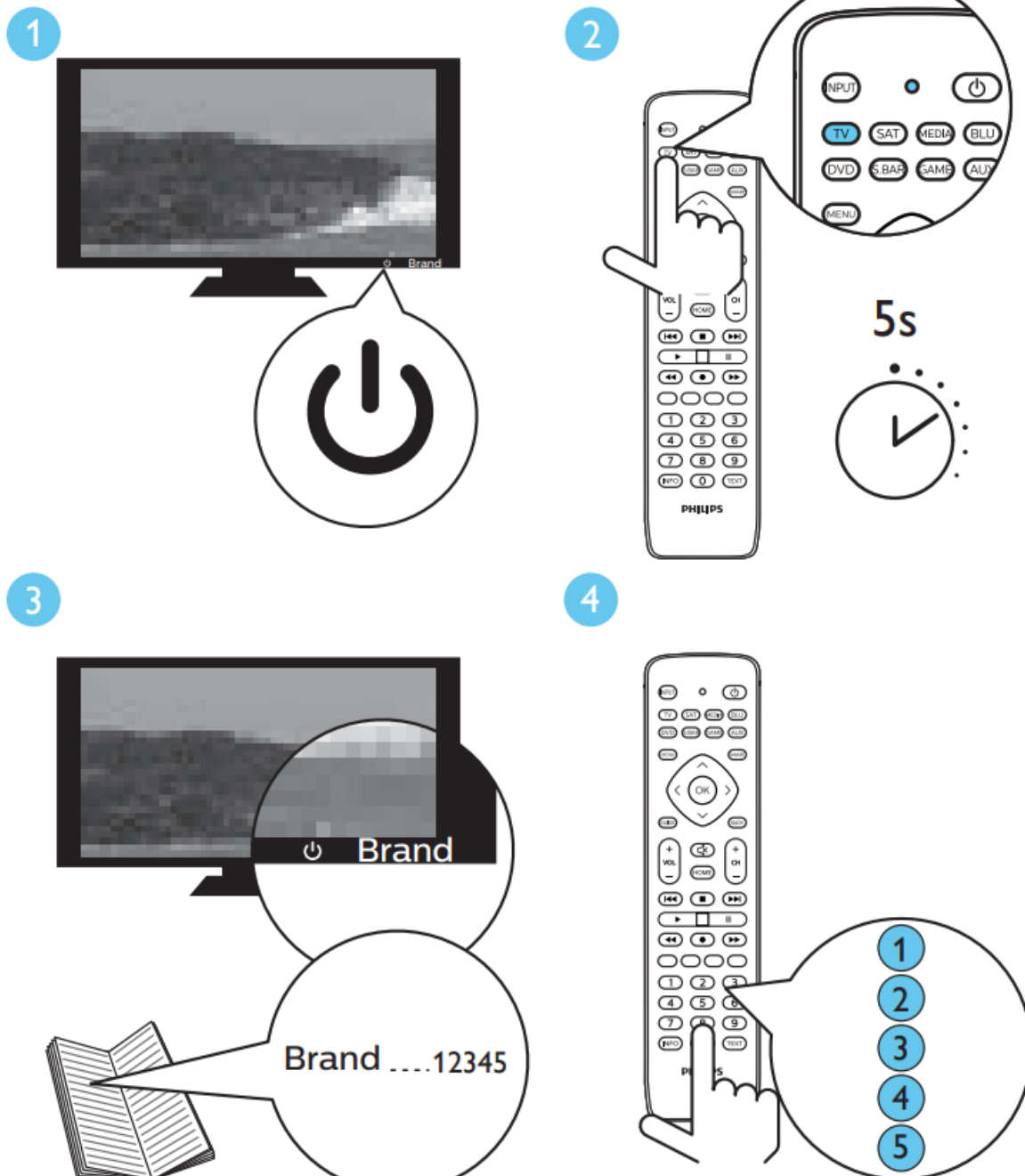
- [1 Insert Batteries \(not included\)](#)
- [2 Set Up By Code Selection](#)
- [3 Learn Code From Other Remote](#)
- [4 Frequently Asked Questions](#)
- [5 Most Popular TV Brand & Code](#)
- [6 Documents / Resources](#)
  - [6.1 References](#)
- [7 Related Posts](#)

**Insert Batteries (not included)**



## Set Up By Code Selection

1. Switch on your device.
2. Press and hold the device selection button (e.g. TV) for 5 seconds until the red LED is on.
3. Look up the 5-digit code for your brand in the code list. Codes are listed by the device type and brand name.  
The most popular code is listed first.
4. Enter the first 5-digit code using the digit buttons.
5. If the light is off, a valid code is saved. Otherwise, the light will flash once and then remains on for code re-entry.
6. Operate the device with the universal remote. If your device responds correctly, it means you have entered the right code. Otherwise, repeat from step 2, and enter the second code on the list.

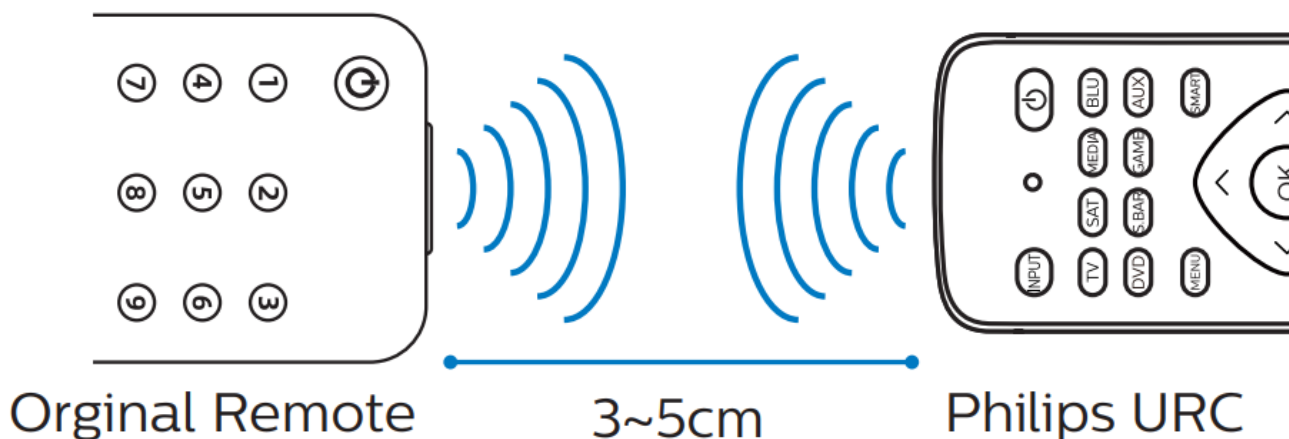


## Learn Code From Other Remote

You must have an original remote for the Universal Remote Control (URC) to learn code from it.

1. Press and hold the device selection button (e.g.TV) for 5 seconds until the red LED is on.
2. Enter the learning code 9 9 9 0 0. The red LED will flash once and then remain on.
3. Place the URC and the original remote, head to head aiming at each other on a flat surface.
4. On the URC, press the button that you would like to learn a code from the original remote.The LED indicator will blink twice and stay on.
5. On the original remote, press and hold the button that you would like to learn from for 2 seconds.
6. The LED will blink once and stay on if the learning is successful.  
To learn another key, repeat Step 4.  
To exit press the device button again.

7. The LED will blink 6 times quickly if learning failed. Repeat Step 4 to learn again.



## Frequently Asked Questions

### My universal remote does not work at all.

- Check if you have correctly set up the device with the right code.
- Check if you have pressed the corresponding device key for your device.
- Check if the batteries are inserted properly. If the battery level is low, replace the batteries.
- Check if your device is powered on.

### If several device codes are listed under the brand of my device, how can I select the correct device code?

To seek the correct device code, test the codes one by one. The codes are sorted by popularity, and the most popular code is listed first.

My device responds only to some of the commands.

You have set a code for which only some commands work properly but some do not. Try other codes until most keys work properly or learn the key from original remote if it supports the learning function.

## Most Popular TV Brand & Code

Brand Name	Code Number	Brand Name	Code Number
APPLETV	15039		15618
	19959		10625
	15776		13713
	15874		12919
	12068		12318
	13444		16203
	13346	SIEMENS	16105
PHILIPS			

	13248		16007
	13140		15909
	13042		15801
	19459		13403
	18753		13248
	16842		13615
	19332		19253
PANASONIC	19753	TELEFUNKEN	17244
	14042		13732
	13846		15276
	13748		12457
	11356		19740
	13944		17342
	19655		16738
	19332		16026
	19326		18339
	13640		10223
	13542		14716
	19136		14314
	11027		10511
	15178		11704
	15070		14741

LG	19851	THOMSON	13248
	12846		11343
	19332		14849
	15757		15662
	14950		15564
	16725		14466
SAMSUNG	14140		12963
	10065		10960
	12441		12251
	19332		17646
	19911		17548
	12919		13634
SONY	12846		10821
	14352		17013
	16744		14716
	15045		14618
	14741		10916
	19557		12745
	18560		10619
	18462		19332
	19345		11533
	10840		10929

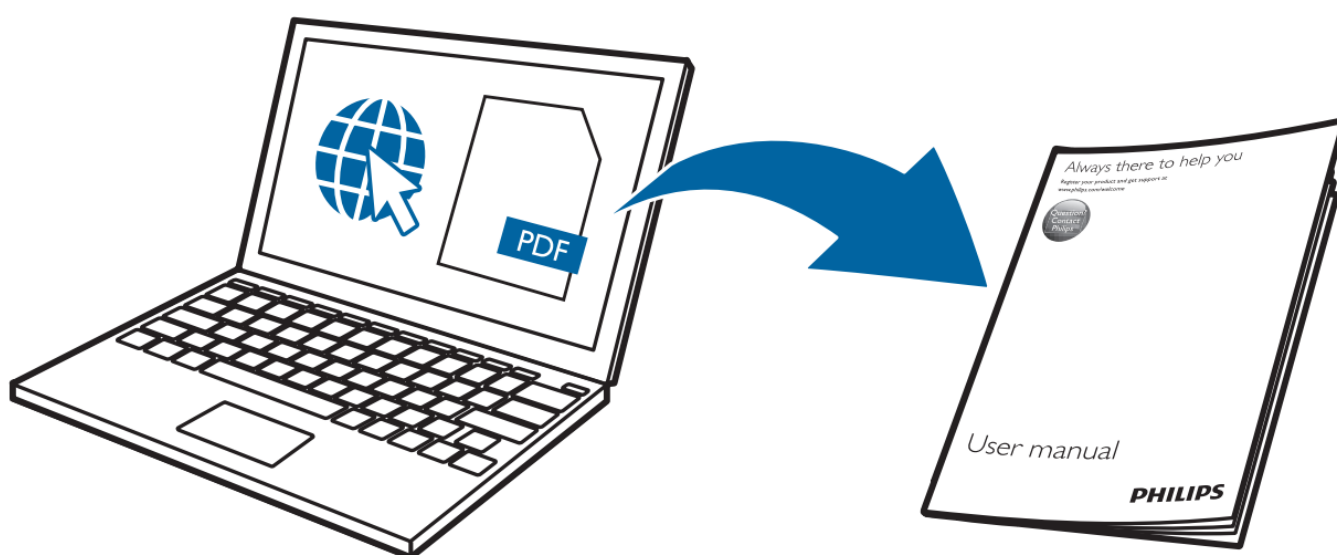
SCHNEIDER	19332	UNIVERSUM	10625
	10929		10125
	10625		19911
	18918		19617
	17415		16513
	15510		15314
	14412		15010
	13311		14912
	12615		14118
	11612		13615
	11416		13517
	15203		11612
	11008		19709
	10606		18206
	19740		16703
	13248		16507
	18826		16007
	10619		15409
			19740
			18943
			18826
10619			



Scan QR code for on-line



User Manual and Code List.



Specifications are subject to change without notice.

Philips and the Philips Shield Emblem are registered trademarks of Koninklijke Philips N.V. and are used under license.

This product has been manufactured by and is sold under the responsibility of MMD Hong Kong Holding Limited or one of its affiliates, and MMD Hong Kong Holding limited is the warrantor in relation to this product.



**Documents / Resources**



[PHILIPS SRP2018 Universal Remote Control](#) [pdf] User Guide  
SRP2018, TAPR802, SRP2018 Universal Remote Control, Universal Remote Control, Remote Control, Control

## References

-  [Philips Customer Service Support - Home | Philips](#)