



# PHILIPS SPT6607B Wireless Keyboard Mouse Combo User Manual

[Home](#) » [Philips](#) » PHILIPS SPT6607B Wireless Keyboard Mouse Combo User Manual 

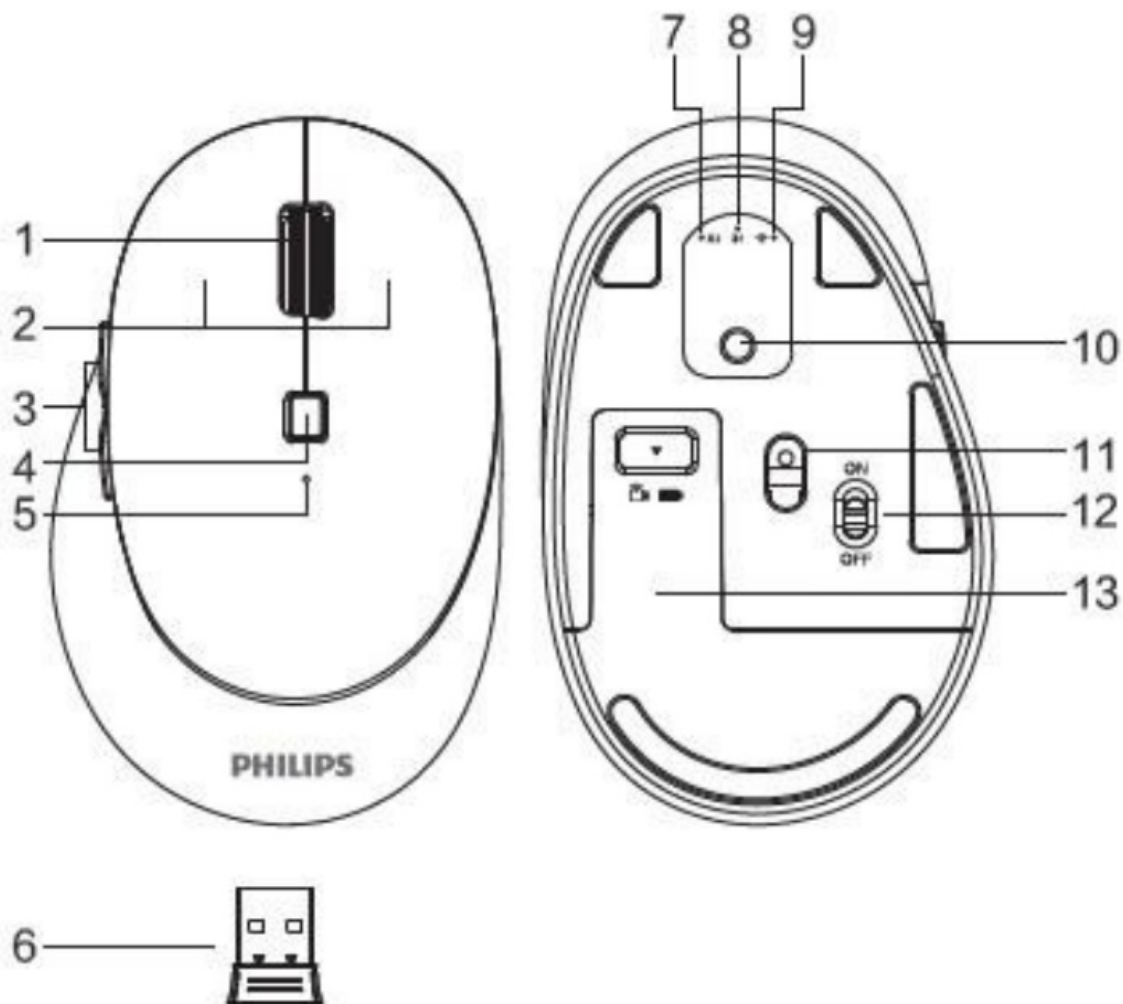
## PHILIPS SPT6607B Wireless Keyboard Mouse Combo User Manual



### Contents

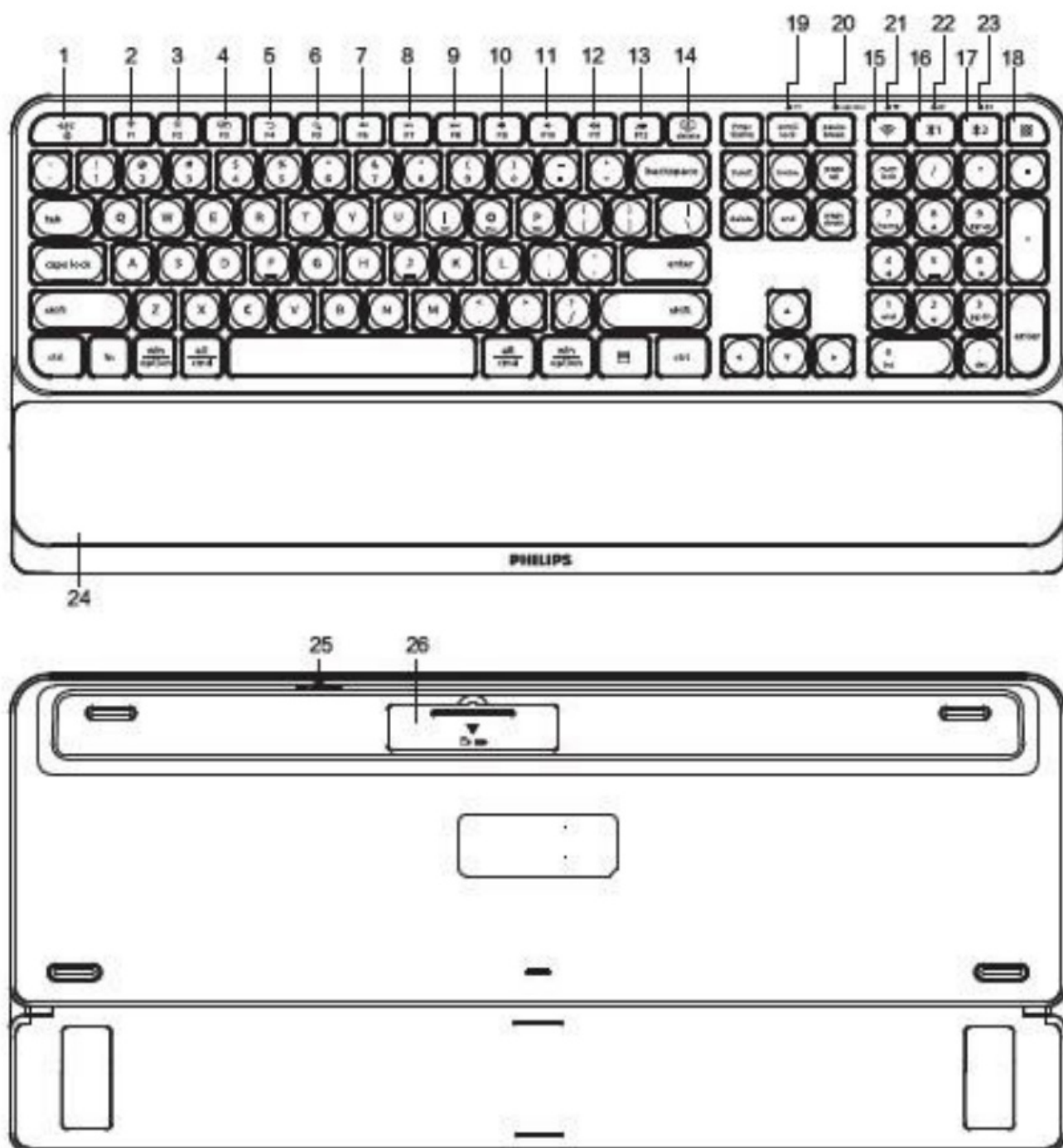
- 1 Function overview of the mouse
- 2 Function overview of the keyboard
- 3 2.4G wireless connection guide
- 4 Bluetooth connection guide of the keyboard
- 5 Bluetooth connection guide of the mouse
- 6 Mode switching method of the keyboard
- 7 Mode switching method of the mouse
- 8 Switch keyboard layout for 105/Mac/Win
- 9 Switch F1-F12/multimedia function
- 10 Low battery reminder
- 11 Packaging contents
- 12 System requirement
- 13 Technical specifications
- 14 Trouble shooting
- 15 Documents / Resources
- 16 Related Posts

## Function overview of the mouse



1. Scroll wheel
2. Left and right buttons
3. Forward/backward side buttons
4. DPI button
5. Low battery indicator
6. Wireless receiver
7. Bluetooth mode 2 indicator
8. Bluetooth mode 1 indicator
9. 2.4G wireless mode indicator
10. Male switch button
11. Optical sensor
12. ON/OFF switch
13. Battery door

### Function overview of the keyboard

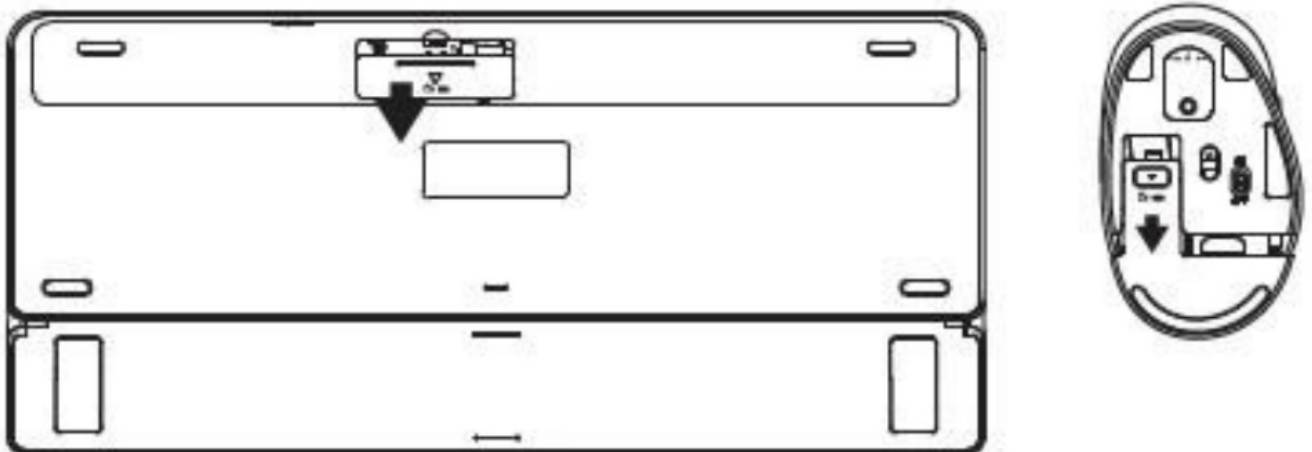


1. Lock fn function
2. Screen brightness –
3. Screen brightness +
4. Multi screen display
5. Return
6. Search
7. Prey song
8. Play/Pause
9. Net sone
10. Mute
11. Volume –
12. Volume +
13. Input method switching

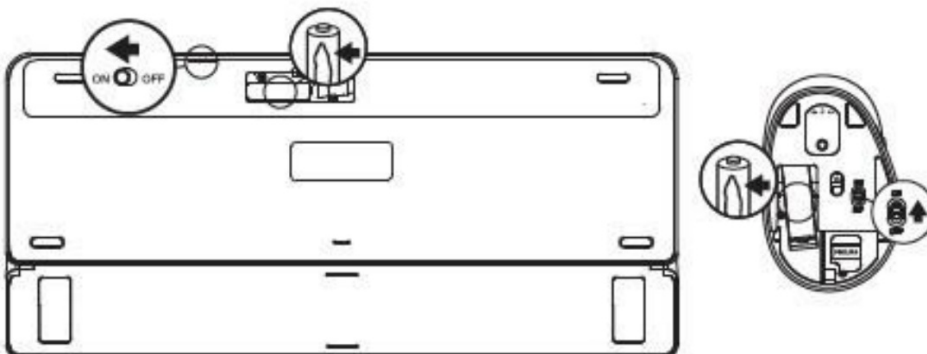
14. Lock screen
15. 2AG wireless mode
16. Bluetooth mode 1
17. Bluetooth mode 2
18. Calculator
19. Low battery indicator
20. Caps lock indicator
21. 2.4G wireless mode indicator
22. Bluetooth mode 1 indicator
23. Bluetooth mode 2 indicator
24. Magnetic adsorption wrist rest
25. ON/OFF switch
26. Battery door

## 2.4G wireless connection guide

1. Push the battery door away.



2. Pull off the battery Insulating film Turn on the power switch.



3. Take out the receiver and close the battery door.



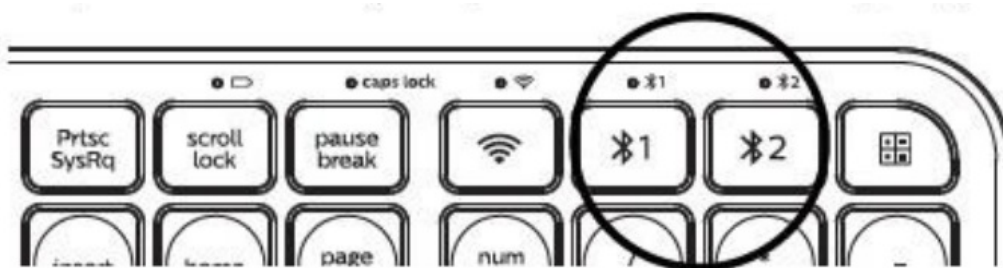
4. Plug the receiver into the USB port of a PC.



Note: the factory default setting of the connection mode of keyboard and mouse is 2.4G mode. If the connection is successful the 2.46 mode indicator will automatically turn off.

## Bluetooth connection guide of the keyboard

Note: make sure that the keyboard power is on before Bluetooth pairing.



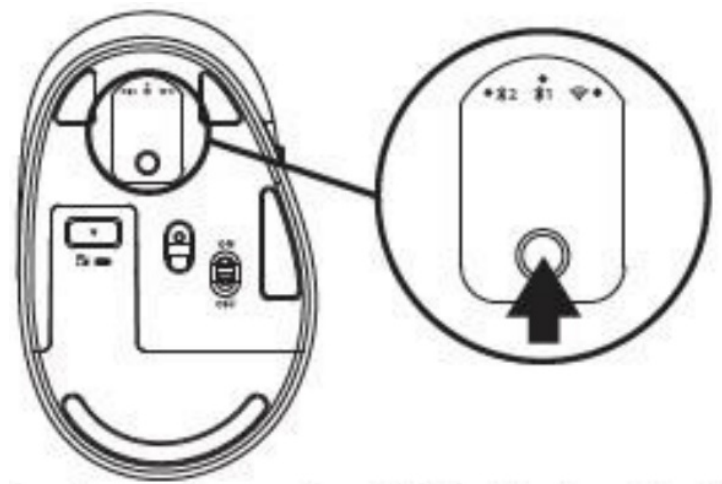
1. Select the Bluetooth mode to be connected, short press the mode key, and the corresponding indicator on the top will flash slowly; long press the Bluetooth mode switch key again, and the corresponding indicator on the top will flash quickly, and then enter the waiting for Bluetooth pairing.
2. Turn on the Bluetooth of your computer or other devices, search and select "Philips SPK6607" or "SPK6607" and start Bluetooth pairing until the connection is completed.

### Note:

1. Bluetooth 5.0 is not supported on Windows 7 and below;
2. The device ID for Bluetooth 3.0 is Philips SPK6607, while for Bluetooth 5.0 is S P K6607.

## Bluetooth connection guide of the mouse

**Note:** make sure that the mouse power is on before Bluetooth pairing.



1. Short press the mode switch button to select the Bluetooth mode to be connected, and the corresponding Indicator light on the top will flash slowly, Long press the Bluetooth mode switch key, and the corresponding indicator Light on the top will flash quickly, then enter the waiting for Bluetooth pairing.
2. Turn on the Bluetooth of your computer or other devices, search and select “Philips SPK7607” or ‘SPK7607” and start Bluetooth pairing until the connection is completed.

**Note:**

1. Bluetooth 5.0 is not supported on Windows land below;
2. The device ID for Bluetooth 3.0 is Philips SPK7607, while for Bluetooth 5.0 is SPK7607.

### Mode switching method of the keyboard



1. The keyboard has three channels, 2.4G, Bluetooth 1 and Bluetooth 2, which can connect three devices at the same time.
2. Mode switching. Short press the mode switch button, the corresponding mode indicator on the top will be on for 3 seconds. and then it will be off. The switch to the corresponding equipment is completed. If the mode indicator is flashing slowly, it means that the mode has not been connected.

### Mode switching method of the mouse



1. The mouse has three channels. 2.4G, Bluetooth 1 and Bluetooth 2, which can connect three devices at the same time.

2. Mode switching. Short press the mode switch button, the corresponding mode indicator on the top will be on for 3 seconds, and then it will be off. The switch to the corresponding equipment is completed. If the mode indicator is flashing slowly, it means that the mode has not been connected.

## Switch keyboard layout for 105/Mac/Win

Press the key combination (FN+I: 105; FN+O: Mac; FN+P: Windows) to switch the keyboard layout corresponding to the system.



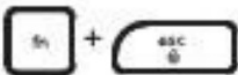
**Note:** the default setting of the keyboard layout is for Windows.

## Switch F1-F12/multimedia function

1. The factory default setting of F1-F12/ multimedia function keys is multimedia function.



2. Press the key combination (FN+ ESC) to switch to F1-F12 function. Press it again to switch back to multimedia function.



## Low battery reminder

When the battery power of keyboard or mouse is low, the low battery indicator flashes red light to remind you to replace the battery

## Packaging contents

1. Wireless keyboard and mouse
2. Wireless receiver
3. Detachable wrist rest
4. User manual and important information
5. 1\*AA battery (inside mouse)
6. 1\*AAA battery (inside keyboard)

## System requirement

1. 1 x USB port
2. Bluetooth
3. 0/Bluetooth 5.0 3. Windows') 7Windowsl 8.VVindowss 10 or later. Android 3.2 and above; Mac 0510.5 or later

**Note:** Multimedia functions are partially invalid in different OS versions.

## Technical specifications

1. Connectivity: 2.4GHz/Bluetooth 3.0/Bluetooth 5.0
2. Working distance: 2.4GHz about 15m/Bluetooth about 10m
3. Number of buttons: 7 4. Mouse buttons lifespan: 3 million clicks
4. Keyboard keys lifespan: 10 million keystrokes
5. Resolution: 800/1200/1600/2400/3200 DPI
6. Power supply: I\*AA Philips battery(mouse), I\*AAA Philips battery(keyboard)
7. Interface: USB wireless receiver
8. Mouse size:
9. 7.2×74.8×39.3mm
10. Keyboard size: 432.8×196.2×21.9mm
11. Product weight: 836g ± 10g
12. Operating temperature range: 0 °C to 40 °C
13. Operating humidity range: 10% – 85%.

## **Trouble shooting**

1. Make sure that the USB wireless receiver of the product is correctly plugged into the USB port of the computer.
2. Make sure the computer meets the minimum system requirement.
3. If the distance between the product and the receiver exceeds an effective range, please reduce the distance for better performance.

If you can't solve the problem, please try to find the solution from Philips website or nearest retailer. Please do not disassemble the product by force.

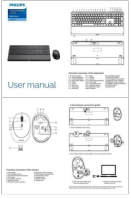
## **Attention**

1. Photoelectric technology can correctly detect the movement of mouse on most surfaces. Do not use the mouse on any reflective, transparent or uneven surfaces.
2. Please use dry and soft cloth to clean the product
3. Do not disassemble the product by force.
4. Do not direct the light from the bottom of the mouse to your eyes.
5. Do not get in the rain or in the sun or fire
6. Do not flush directly with water.



## **Documents / Resources**





**[PHILIPS SPT6607B Wireless Keyboard Mouse Combo](#)** [pdf] User Manual  
SPT6607B, Wireless Keyboard Mouse Combo, Keyboard Mouse Combo, Mouse Combo,  
SPT6607B, Keyboard Mouse