



PHILIPS SPK8708 7000 Series Wireless Mechanical Gaming Keyboard User Manual

[Home](#) » [Philips](#) » PHILIPS SPK8708 7000 Series Wireless Mechanical Gaming Keyboard User Manual 

PHILIPS

7000 Series
Wireless Mechanical Gaming Keyboard



SPK8708

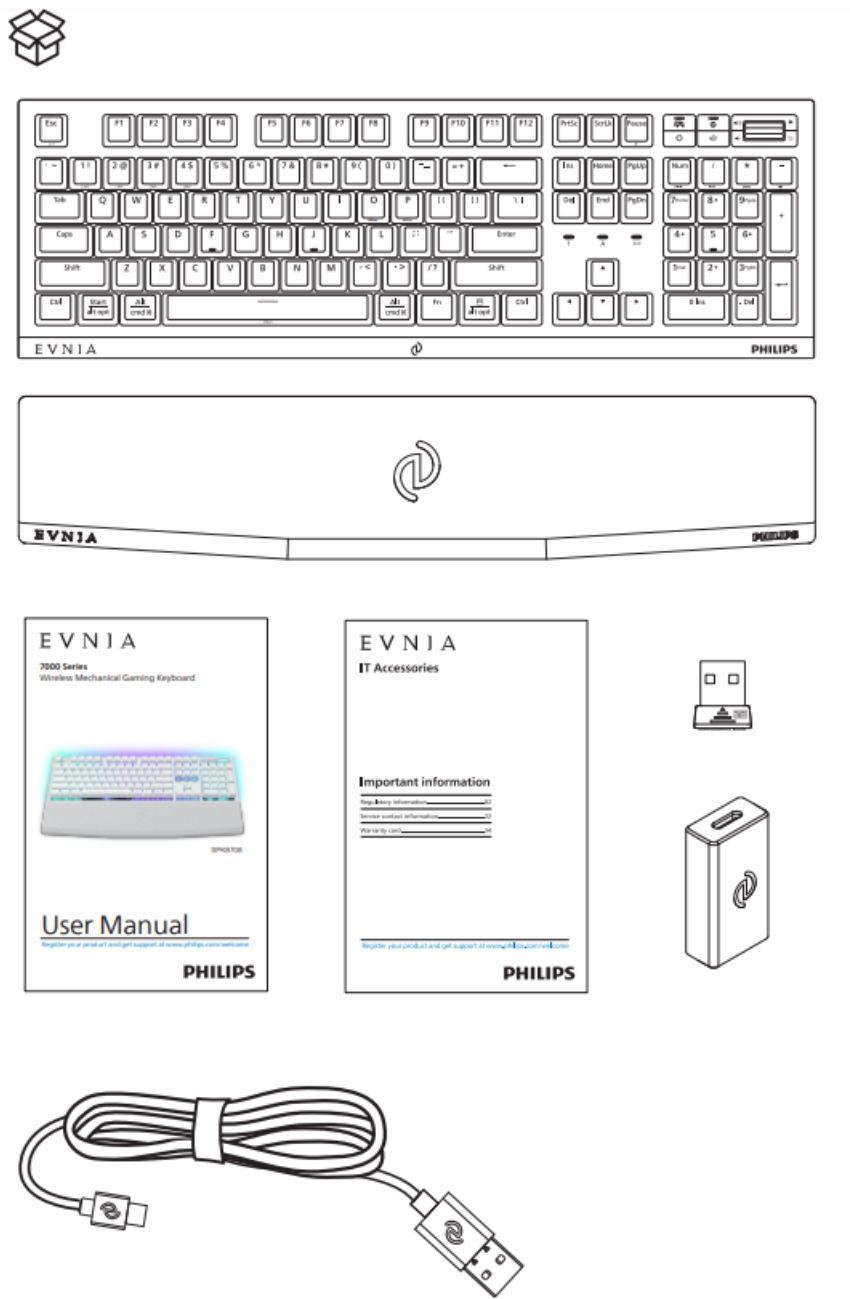
User Manual

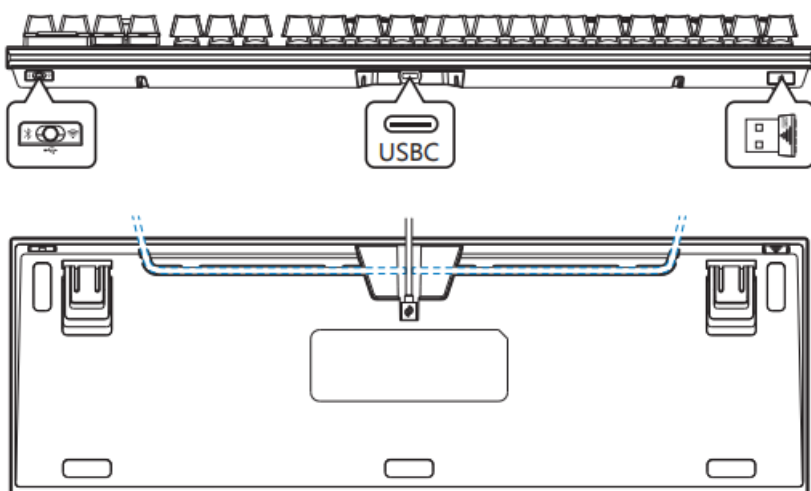
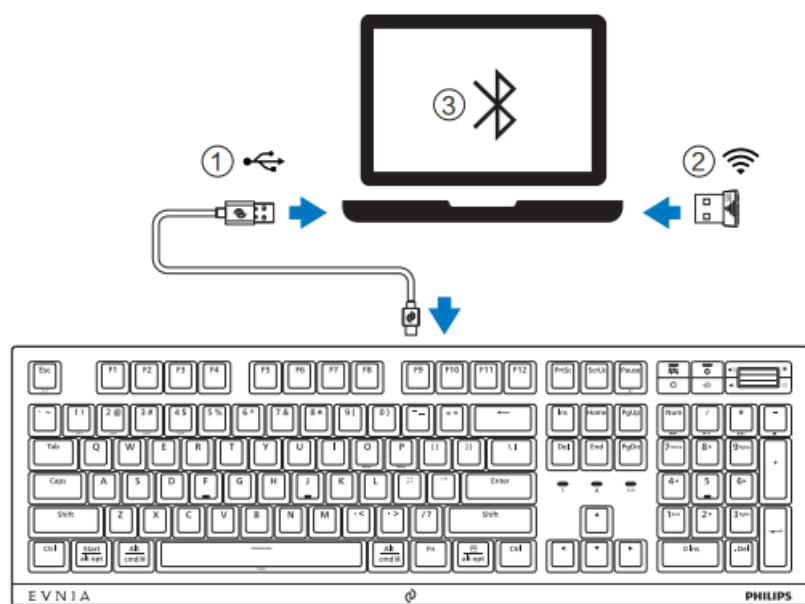
Register your product and get support at www.philips.com/welcome

Contents

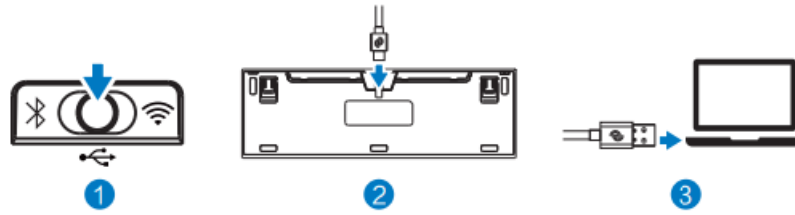
- [1 SPK8708 7000 Series Wireless Mechanical Gaming Keyboard](#)
- [2 Technical specifications](#)
- [3 System requirements](#)
- [4 Documents / Resources](#)
 - [4.1 References](#)

SPK8708 7000 Series Wireless Mechanical Gaming Keyboard

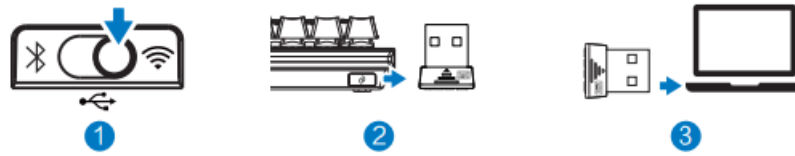




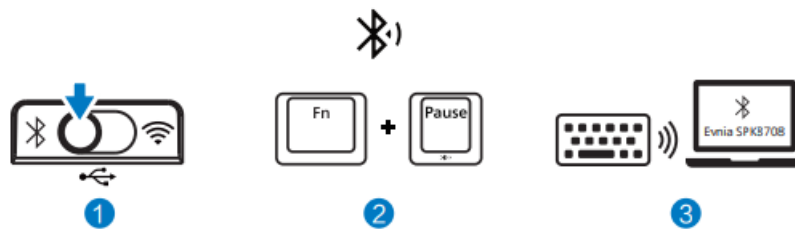
① USB



② 2.4GHz

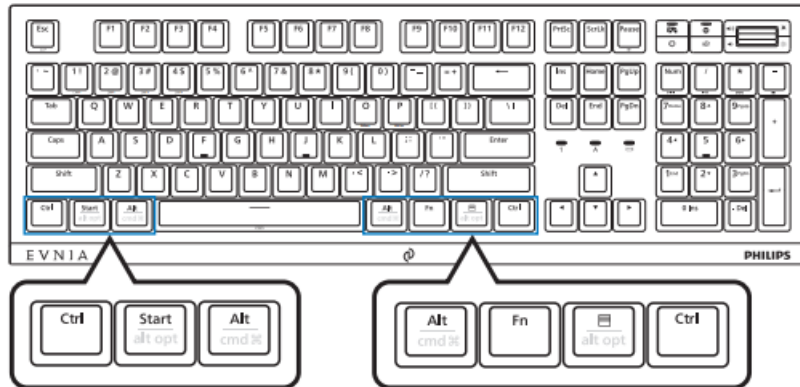
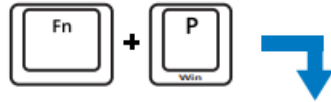


③ Bluetooth®

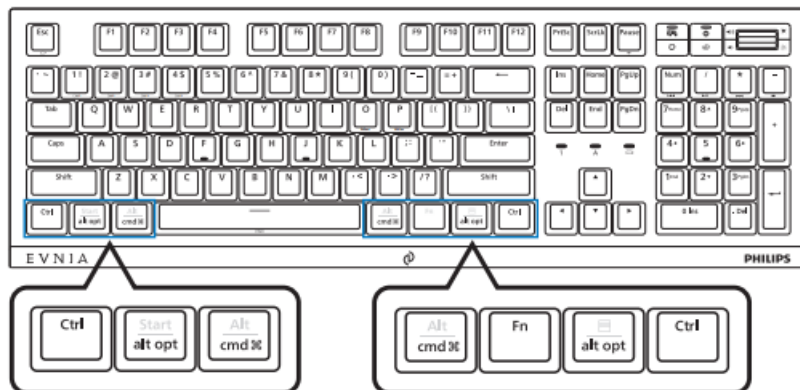
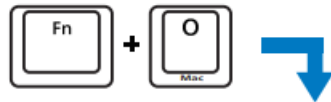




1 Windows OS



2 Mac OS





www.philips.com/support



FAQ



Precision
Center



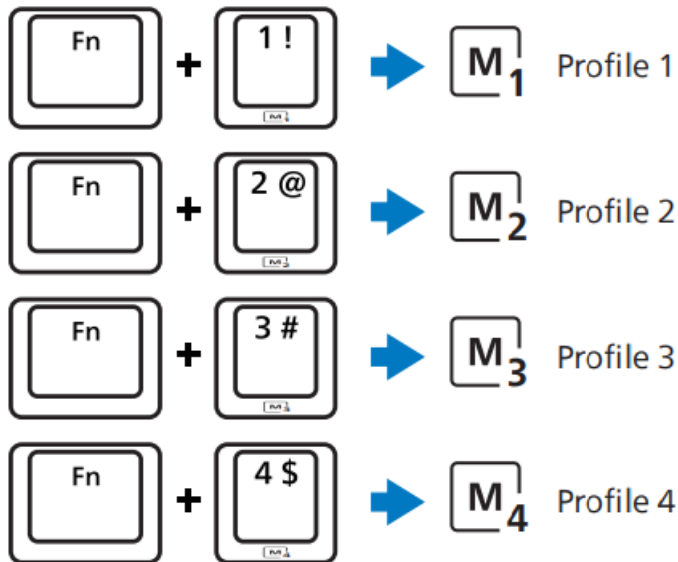
User
Manual

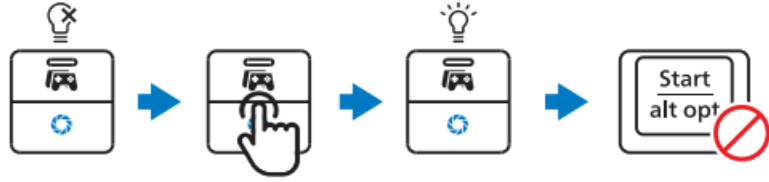


1

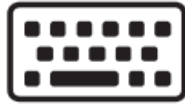


2

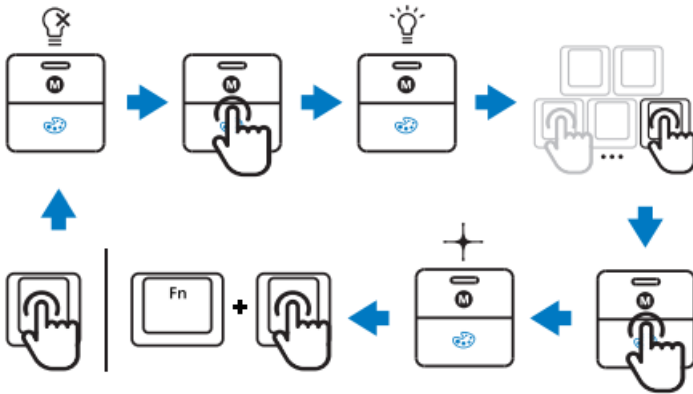


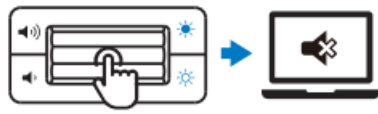
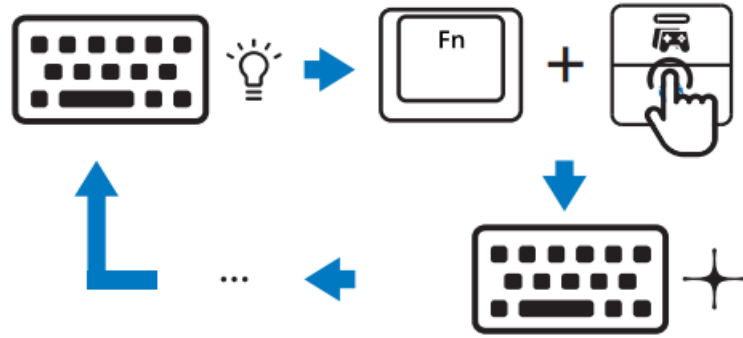
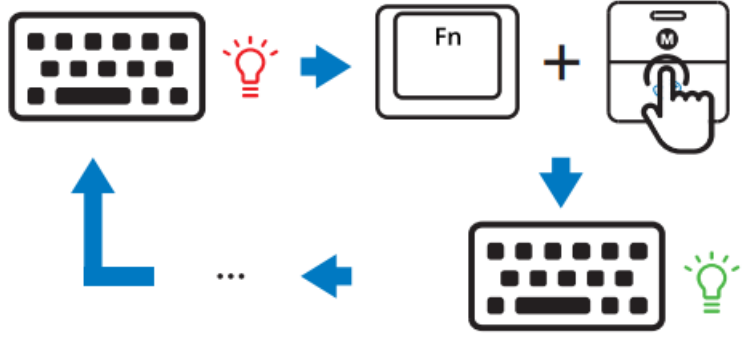


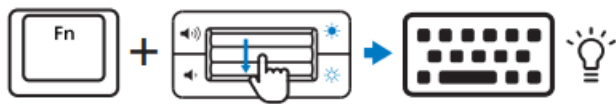
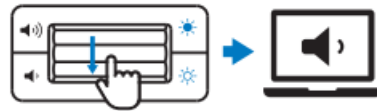
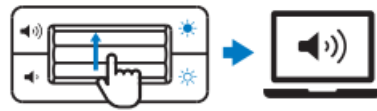
1

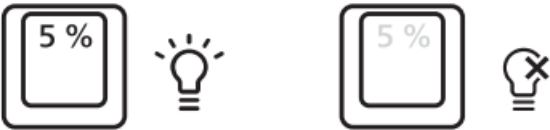
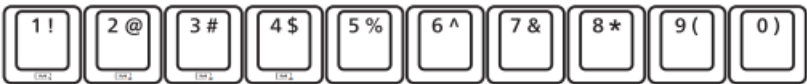
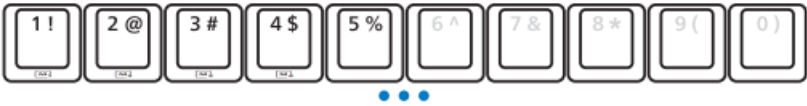
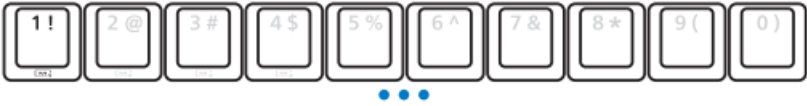




2

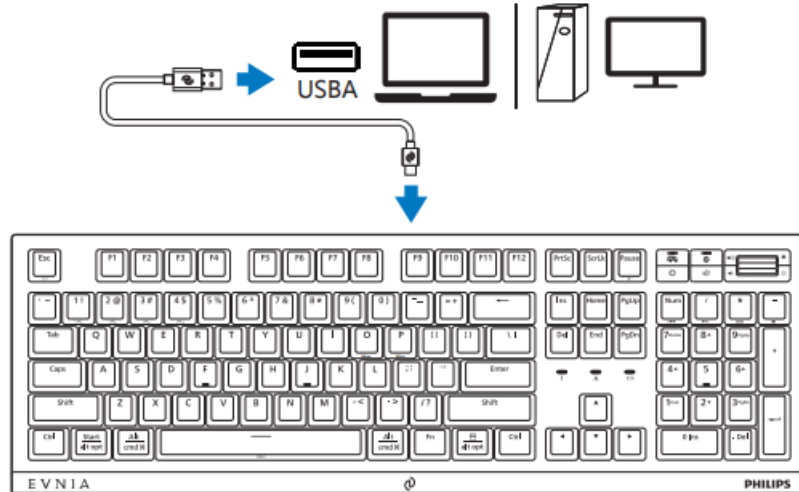
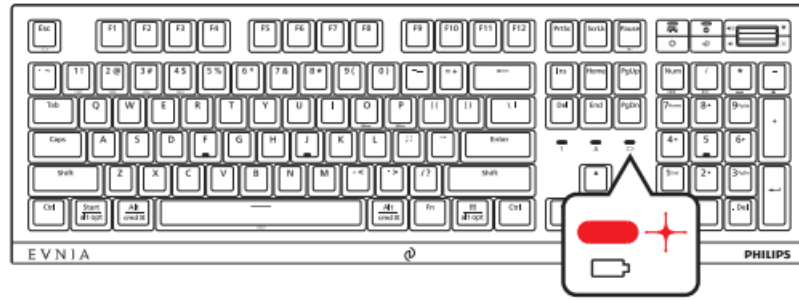






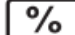


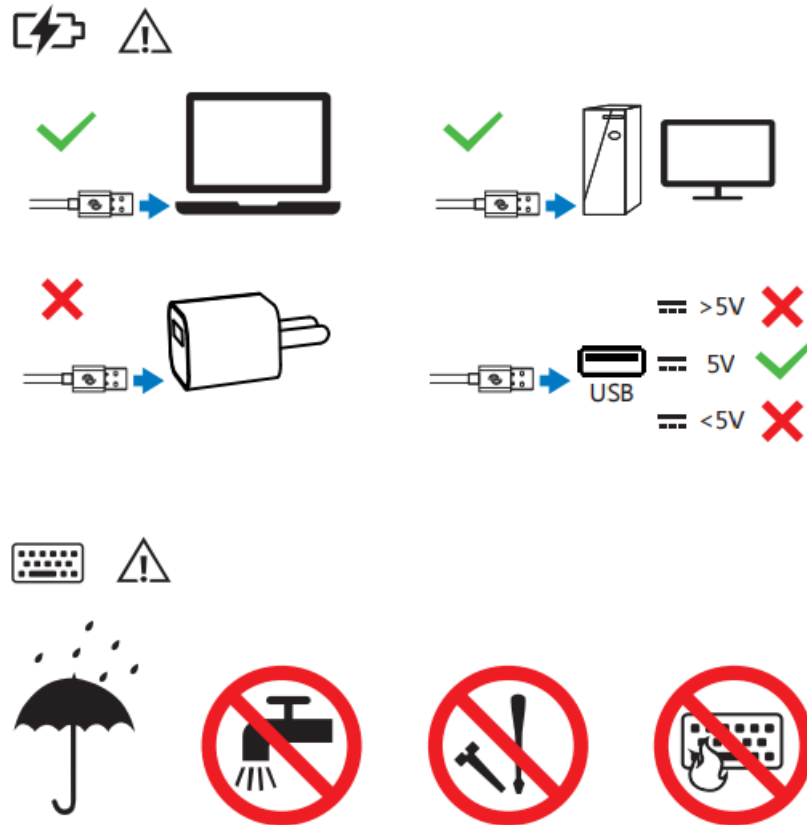
 ( $\leq 10\%$)



 $< 80\%$



 $\geq 80\%$



7000 Series

Wireless Mechanical Gaming Keyboard

Technical specifications

1. Connectivity: USB 2.0 / 2.4GHz / Bluetooth 5.0
2. Wireless effective distance: 15 m (2.4GHz) / 10 m (Bluetooth)
3. Top cover material: Aluminum alloy
4. Number of keys: Full-size keyboard
5. Switch type: Cherry MX RGB mechanical switches
6. Keyboard keys lifespan: 100 million keystrokes
7. Simultaneous input: Full keys conflict-free
8. Programmability: Full keys programmable
9. Backlight: RGB
10. Lighting area: Keys and side groove
11. On-board memory: supports 4 profiles
12. Wrist rest: Wrist rest with magnetic adsorption
13. Cable: USB-A to USB-C braided cable (1.8 m)
14. Battery: Rechargeable lithium battery (3750 mAh)
15. Product dimension: 446.1 * 225.4 * 41.2 mm (Including wrist rest)
16. Product weight: about 1528 g (Including cable and wrist rest)
17. Operating temperature range: 0°C ~ 40°C
18. Operating humidity range: 10% ~ 85%

System requirements

- Product requirements

1. Available USB port;
2. Microsoft Windows 7, Windows 8, Windows 10 or later; Android 3.2 and above; Mac OS 10.5 and above;

- EVNIA PRECISION CENTER software requirements

1. Microsoft Windows 7, Windows 8, Windows 10 or later;
2. Internet connection available for software installation;
3. 500 MB of free hard disk space;

Set up your device with the EVNIA PRECISION CENTER software

1. Download and install the EVNIA PRECISION CENTER software.
2. Connect your device to your computer.
3. You can customize your device with EVNIA PRECISION CENTER software.

Register your product and get support at www.philips.com/welcome



The Bluetooth® word mark and logos are registered trademarks owned by Bluetooth SIG, Inc. and any use of such marks by MMD Hong Kong Holding Limited is under license. Other trademarks and trade names are those of their respective owners.

2023 © Top Victory Investments Limited . All rights reserved.

Philips and the Philips Shield Emblem are registered trademarks of Koninklijke Philips N.V. and are used under license.

This product has been manufactured by and is sold under the responsibility of Top Victory Investments Limited , and Top Victory Investments Limited is the warrantor in relation to this product.

Specifications are subject to change without notice

Register your product and get support at: www.philips.com/welcome

Made in China



[PHILIPS SPK8708 7000 Series Wireless Mechanical Gaming Keyboard](#) [pdf] User Manual
SPK8708 7000 Series Wireless Mechanical Gaming Keyboard, SPK8708 7000 Series, Wireles
s Mechanical Gaming Keyboard, Mechanical Gaming Keyboard, Gaming Keyboard, Keyboard

References

- [Philips Customer Service Support - Home | Philips](#)
- [Product registration | Philips](#)
- [User Manual](#)