



PHILIPS PDRxE Button Panel with Backlit Buttons Instruction Manual

[Home](#) » [Philips](#) » PHILIPS PDRxE Button Panel with Backlit Buttons Instruction Manual 

Contents

- [1 PHILIPS PDRxE Button Panel with Backlit Buttons](#)
- [2 Product Usage Instructions](#)
- [3 WHAT'S IN THE BOX](#)
- [4 TOOLS](#)
- [5 DIMENSION](#)
- [6 ASSEMBLY INSTRUCTIONS](#)
- [7 FAQ](#)
- [8 Documents / Resources](#)
 - [8.1 References](#)
- [9 Related Posts](#)



PHILIPS PDRxE Button Panel with Backlit Buttons



Product Specifications:

- **Model:** PDRxE
- **User Interface:** Revolution
- **Dimensions:**
 - X2: 63(2.48 in)
 - X2 V3: 10.5 mm DACM (0.41 in)
 - V4: 88 mm (3.46 in)
- **Operating Voltage:** 12 V or 24 V
- **Operating Current:**
 - 120 mA at 12V
 - 60 mA at 24V
 - 2 A max
- **Communication Protocol:** RS-485 DyNet
- **Compliance:**
 - IEC Pollution Degree II
 - IEC Overvoltage Category III
 - SELV/Class 2 (UL)
 - Canadian ICES-003

Product Usage Instructions

- **Installation:**

Devices must be installed by a qualified electrician following all national and local electrical and construction codes.
- **Proximity Sensor Guidelines:**

To prevent false triggering of the proximity sensor, ensure all unearthed metal structures and mains cables are at least 30 cm (11.81 in) away from the user interface.

- **Connection and Power:**

Do not connect inputs to mains power. Always disconnect power before connecting or separating modules.

- **Cleaning:**

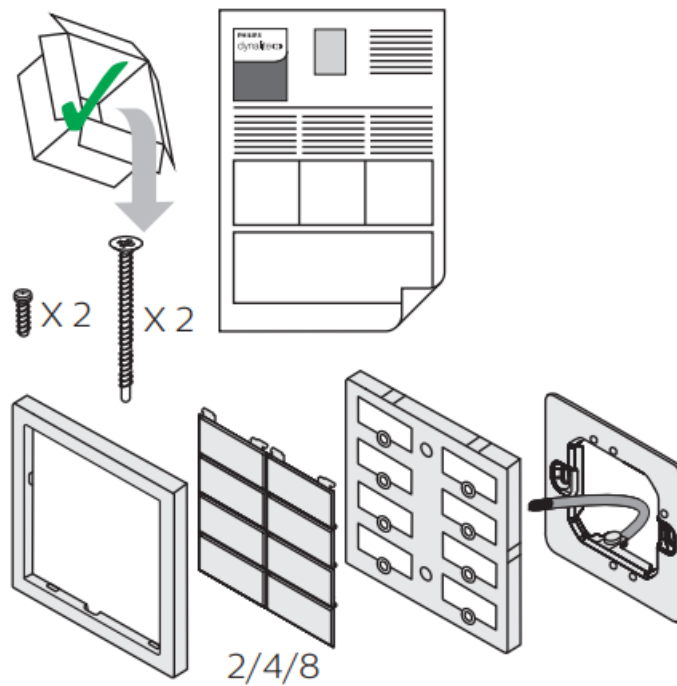
For cleaning recommendations, refer to the Service Guide provided with the product.

- **Additional Information:**

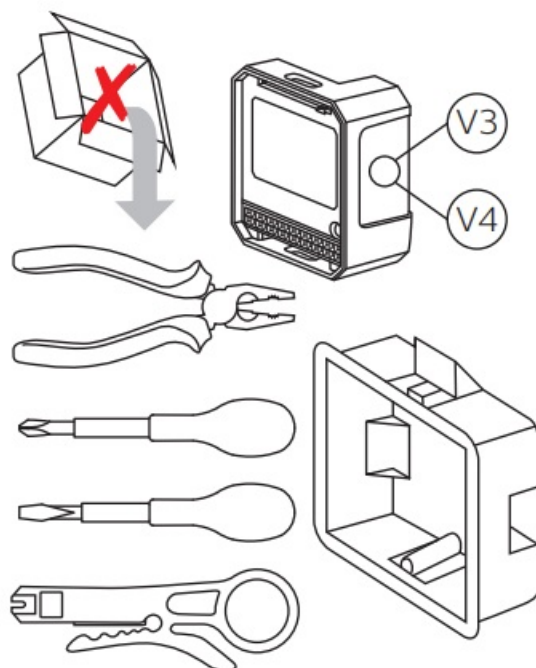
For more details and support, visit the official website at www.dynalite.com.

Devices must be installed by a qualified electrician in accordance with all national and local electrical and construction codes and regulations.

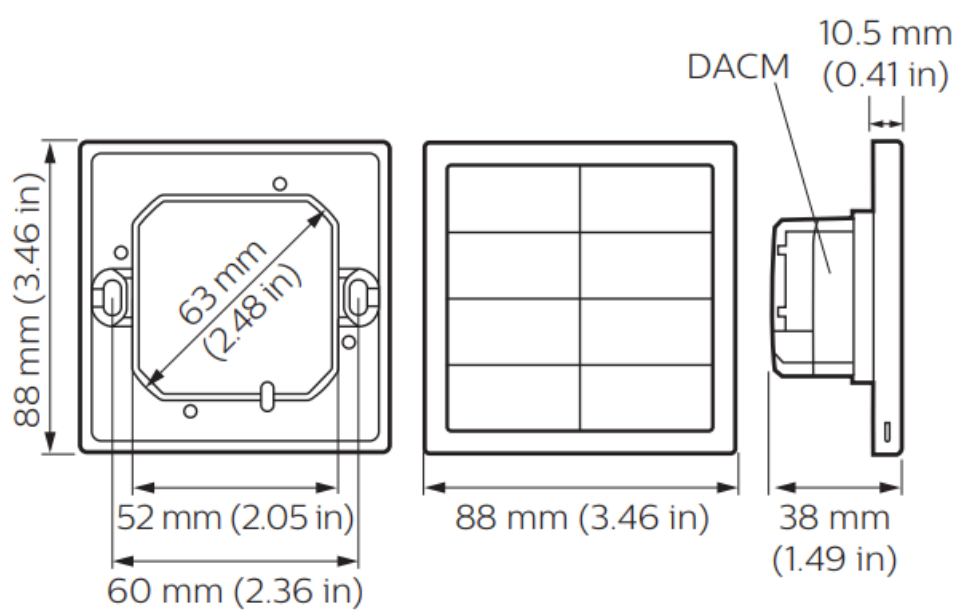
WHAT'S IN THE BOX



TOOLS



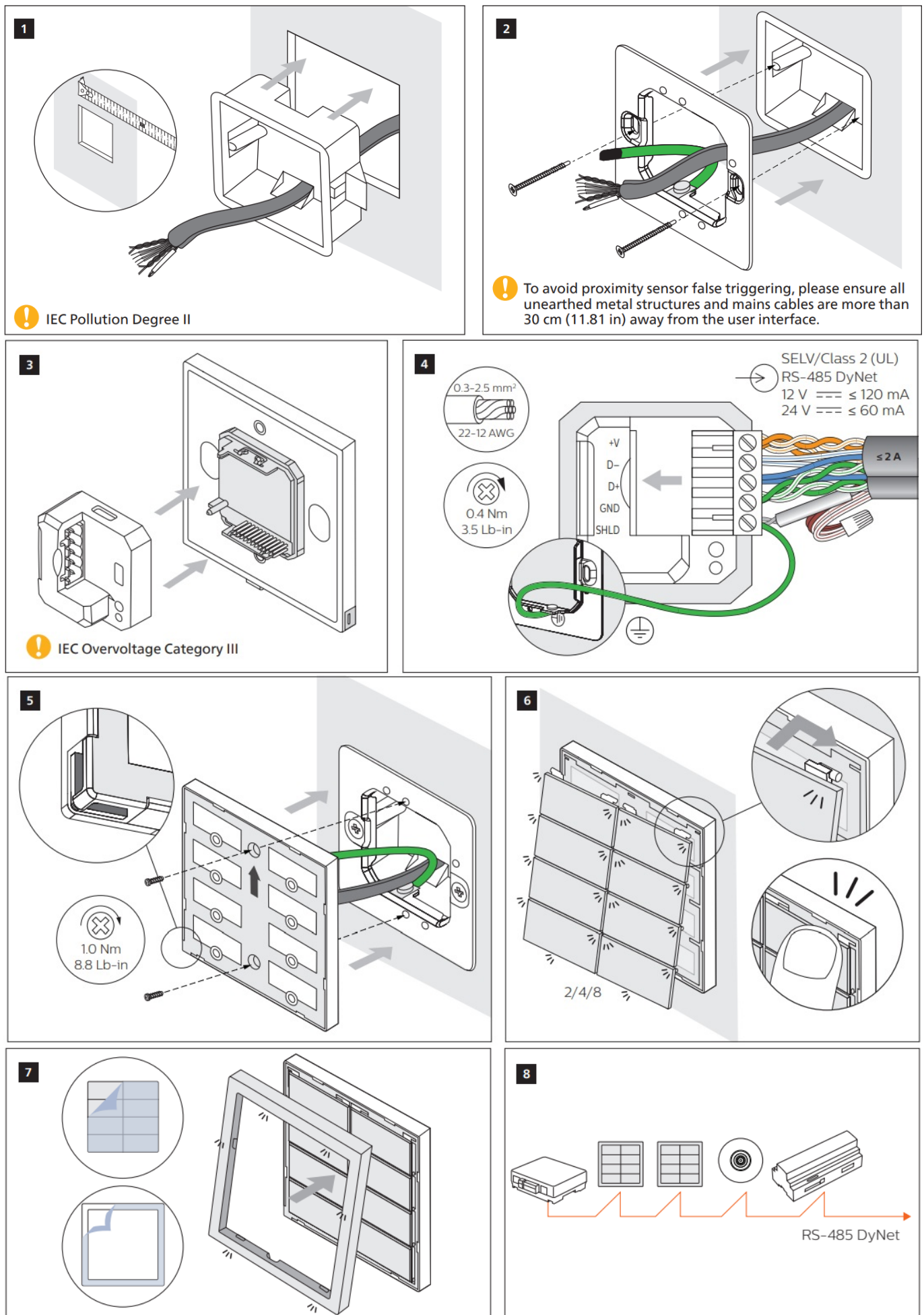
DIMENSION



SYMBOLS



ASSEMBLY INSTRUCTIONS



Federal Communications Commission (FCC) Compliance

Notice: Radio Frequency Notice – This equipment has been tested and found to comply with the limits for a Class

B digital device, pursuant to part 15 of the FCC Rules. These limits are designed to provide reasonable protection against harmful interference in a residential installation. This equipment generates, uses, and can radiate radio frequency energy and, if not installed and used in accordance with the instructions, may cause harmful interference to radio communications. However, there is no guarantee that interference will not occur in a particular installation. If this equipment does cause harmful interference to radio or television reception, which can be determined by turning the equipment off and on, the user is encouraged to try to correct the interference by one or more of the following measures: Reorient or relocate the receiving antenna. Increase the separation between the equipment and receiver. Connect the equipment into an outlet on a circuit different from that to which the receiver is connected. Consult the dealer or an experienced radio/TV technician for help. Any modifications not approved by the manufacturer of this device could void the user's authority to operate this device.

- Do not connect inputs to mains.
- Disconnect power before connecting or separating modules.
- Refer to Service Guide for full cleaning recommendations.

This Class B digital apparatus complies with Canadian ICES-003: Installation of a home and building automation and control system shall comply with IEC 60364 (all parts). The temperature limits and current-carrying capacities for the communication wires specified in IEC 60364-5-52 shall not be exceeded.

© 2024 Signify Holding. All rights reserved. Specifications are subject to change without notice. No representation or warranty as to the accuracy or completeness of the information included herein is given and any liability for any action in reliance thereon is disclaimed. Philips and the Philips Shield Emblem are registered trademarks of Koninklijke Philips N.V. All other trademarks are owned by Signify Holding or their respective owners.

www.dynalite.com

FAQ

Q: What are the voltage options for operating the device?

A: The device can be operated at either 12 V or 24 V.

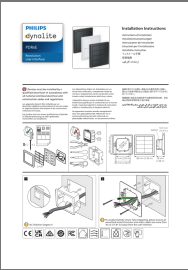
Q: How far should metal structures and main cables be kept away from the user interface to avoid issues?

A: To avoid proximity sensor false triggering, maintain a distance of more than 30 cm (11.81 in).

Q: What compliance standards does the product meet?

A: The product complies with IEC Pollution Degree II, IEC Overvoltage Category III, SELV/Class 2 (UL), and Canadian ICES-003 standards.

Documents / Resources

	<p>PHILIPS PDRxE Button Panel with Backlit Buttons [pdf] Instruction Manual PDRxE, V3, V4, PDRxE Button Panel with Backlit Buttons, PDRxE, Button Panel with Backlit Buttons, Backlit Buttons, Buttons</p>
---	--

References

- [Philips Dynalite - Lighting Controls, Lighting Management](#)
- [User Manual](#)

Manuals+. Privacy Policy

This website is an independent publication and is neither affiliated with nor endorsed by any of the trademark owners. The "Bluetooth®" word mark and logos are registered trademarks owned by Bluetooth SIG, Inc. The "Wi-Fi®" word mark and logos are registered trademarks owned by the Wi-Fi Alliance. Any use of these marks on this website does not imply any affiliation with or endorsement.