



PHILIPS Monitor E line Instruction Manual

[Home](#) » [Philips](#) » PHILIPS Monitor E line Instruction Manual

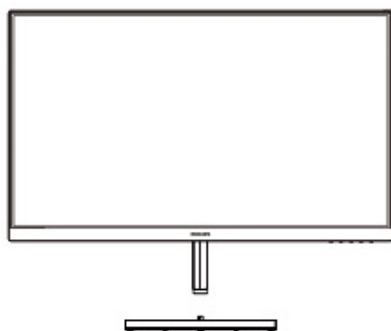




Quick Start

Register your product and get support at www.philips.com/welcome





AC/DC Adapter



* CD



* DP(272E1SA)



* Audio(272E1SA)



* VGA



* DVI(271E1SD)

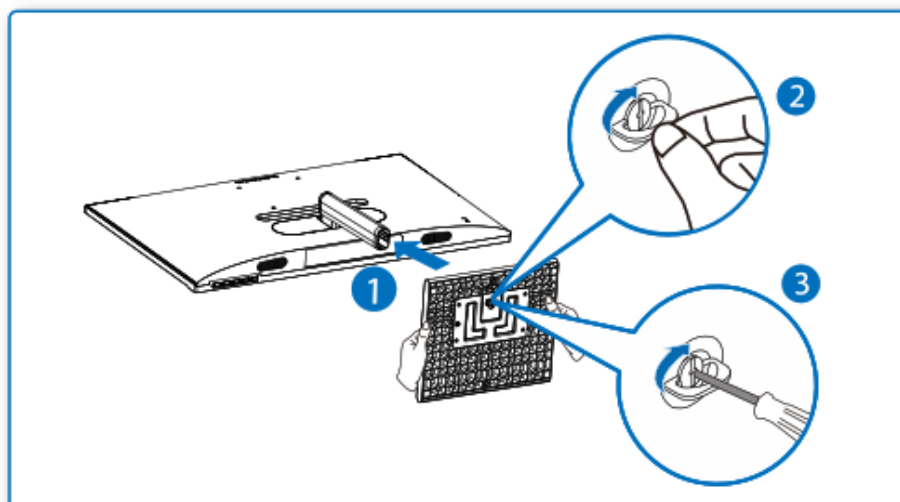


* HDMI

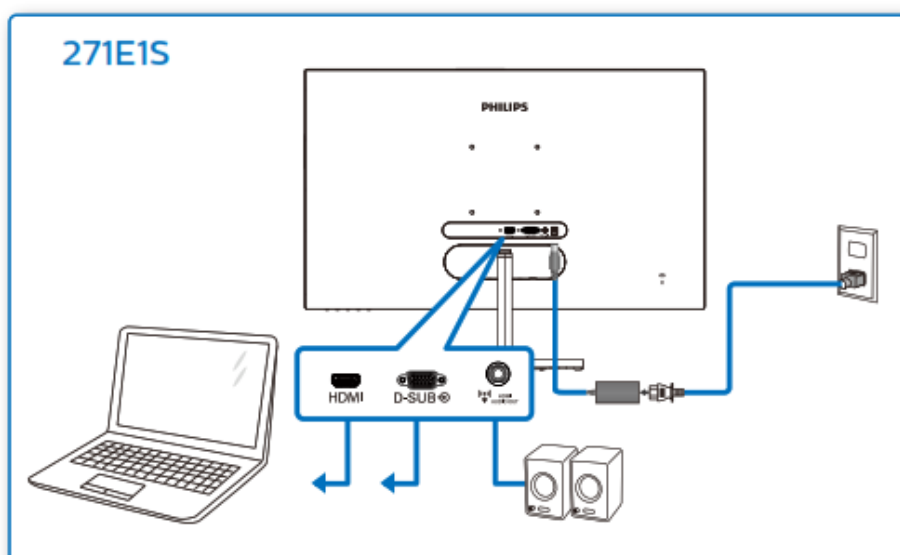
* Different according to region.

Display design may differ from those illustrated.

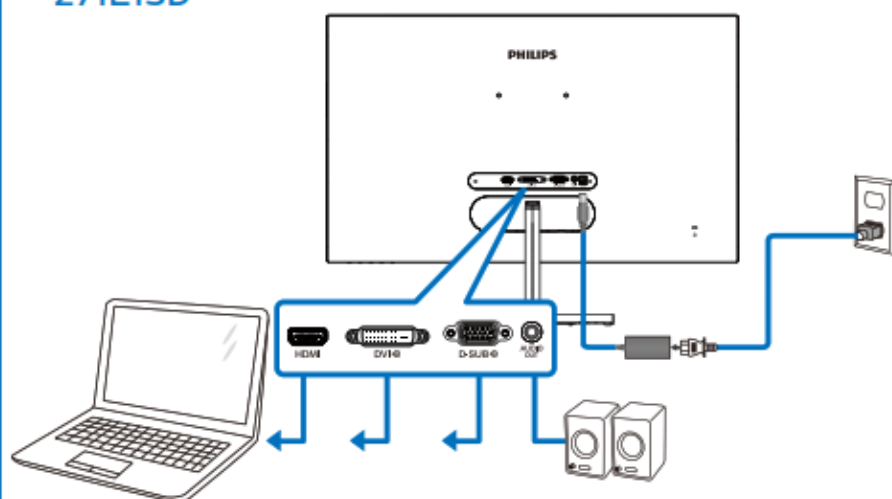
1



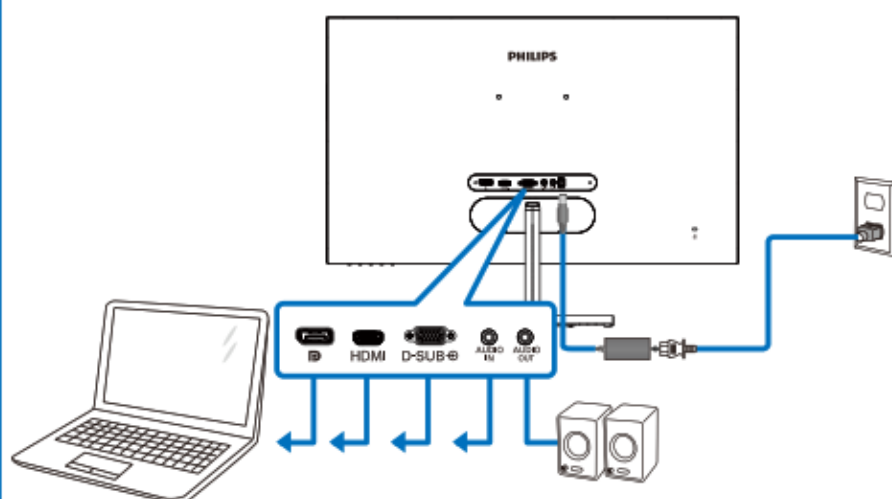
2

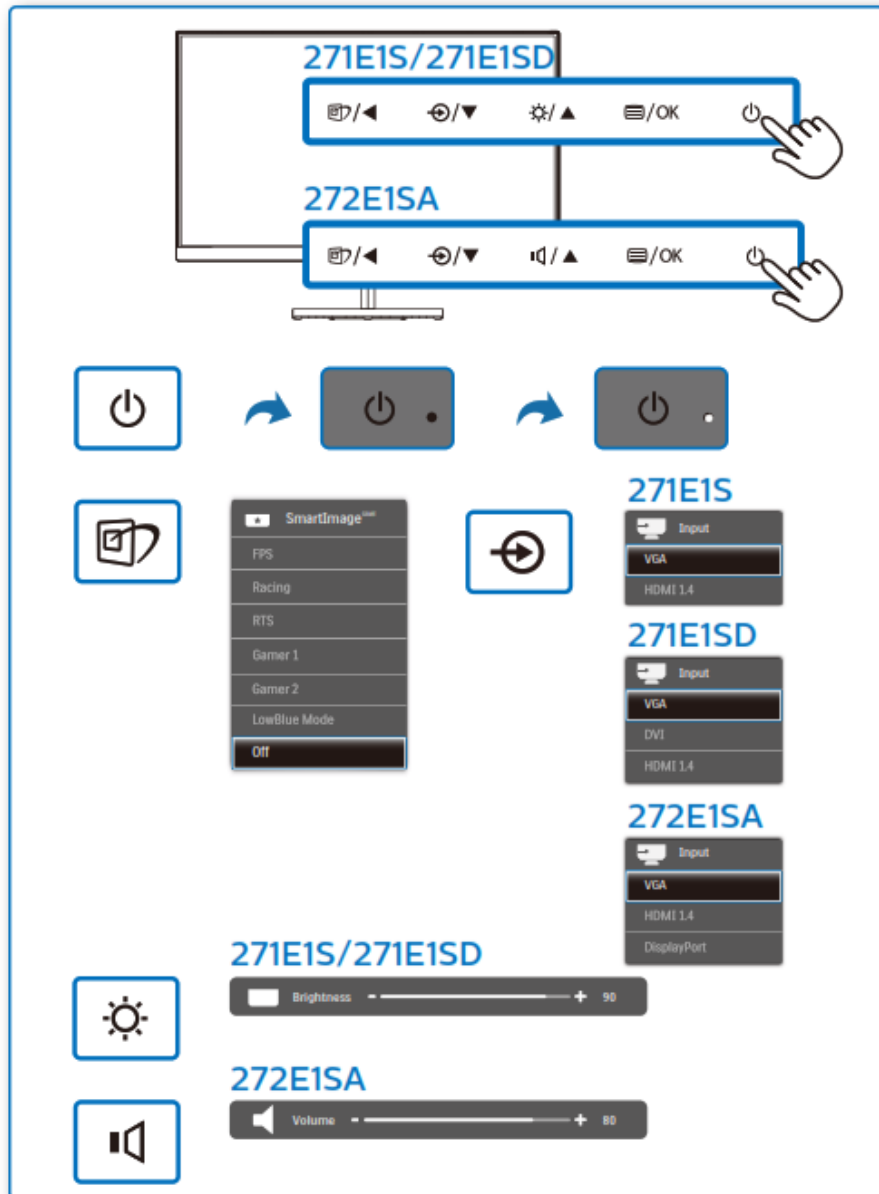


271E1SD



272E1SA







LowBlue Mode	On	
	Off	✓
Input		
Picture		
Audio		
Color		
Language		
▼		



LowBlue Mode	On	
	Off	✓
Input		
Picture		
Audio		
Color		
Language		
▼		

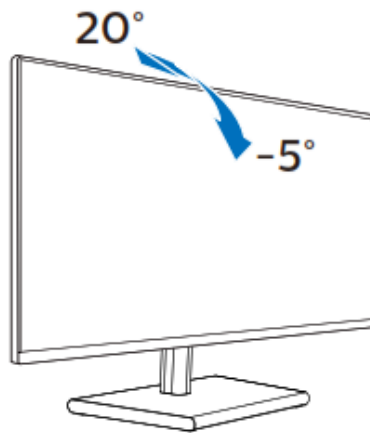


LowBlue Mode	On	
	Off	✓
Input		
Picture		
Audio		
Color		
Language		
▼		



LowBlue Mode	On	
	Off	✓
Input		
Picture		
Audio		
Color		
Language		
▼		

4



Need help?

Online help: www.philips.com/support

Go to above online help for the latest SmartControl software.

Version: M1271ESQ1WWT

2019 © TOP Victory Investment Ltd. All rights reserved.

This product has been manufactured by and is sold under the responsibility of Top Victory Investments Ltd., and Top Victory Investments Ltd. is the warrantor in relation to this product. Philips and the Philips Shield Emblem have registered trademarks of Koninklijke Philips N.V. and are used under license. Specifications are subject to change without notice.

HDMI

HDMI trademarks and related patents on technologies belong to their respective owners.



Printed in China



H41G78S281316B

www.philips.com

Contents [[hide](#)

[1 Documents / Resources](#)

[1.1 References](#)

[2 Related Posts](#)

Documents / Resources

	<p>PHILIPS Monitor E line [pdf] Instruction Manual Monitor E line, 271E1S, 272E1S</p>
---	--

References

- [Philips - United States | Philips](#)
- [Philips Customer Service Support - Home | Philips](#)
- [Product registration | Philips](#)