



# PHILIPS MD3 Fortimo LED Panel Luminaire Module Instruction Manual

[Home](#) » [Philips](#) » PHILIPS MD3 Fortimo LED Panel Luminaire Module Instruction Manual 

## Contents

- [1 PHILIPS MD3 Fortimo LED Panel Luminaire Module](#)
- [2 Product Information](#)
- [3 Product Usage Instructions](#)
- [4 EcoDesign Document](#)
- [5 Documents / Resources](#)
  - [5.1 References](#)
- [6 Related Posts](#)



**PHILIPS MD3 Fortimo LED Panel Luminaire Module**



## Product Information

### Specifications

- **Product Name:** Fortimo LED Panel MD3
- **Model:** LS & SCG
- **Country of Origin:** Not specified

## Product Usage Instructions

### Section 1: Installation

To install the Fortimo LED Panel MD3, follow these steps

1. Choose a suitable location for the panel installation.
2. Ensure the surface is clean and free from dust.
3. Connect the panel to the power source.
4. Securely mount the panel using the provided brackets or screws.

### Section 2: Operation

To operate the Fortimo LED Panel MD3, use the following instructions

1. Turn on the power source.
2. Use the control buttons or remote control to adjust brightness and color settings.
3. Ensure proper ventilation around the panel to prevent overheating.
4. Avoid exposing the panel to extreme temperatures or moisture.

### Section 3: Maintenance

To maintain the Fortimo LED Panel MD3, follow these guidelines

- Regularly clean the panel surface with a soft, lint-free cloth.
- Avoid using harsh chemicals or abrasive materials for cleaning.
- Check for any loose connections or damaged components periodically.

- If any issues arise, refer to the troubleshooting section in the user manual or contact customer support.

## Frequently Asked Questions (FAQ)

### 1. Q: Can I dim the brightness of the Fortimo LED Panel MD3?

A: Yes, you can adjust the brightness settings using the control buttons or remote control.

### 2. Q: Is the panel suitable for outdoor use?

A: No, the Fortimo LED Panel MD3 is designed for indoor use only. It should not be exposed to moisture or extreme temperatures.

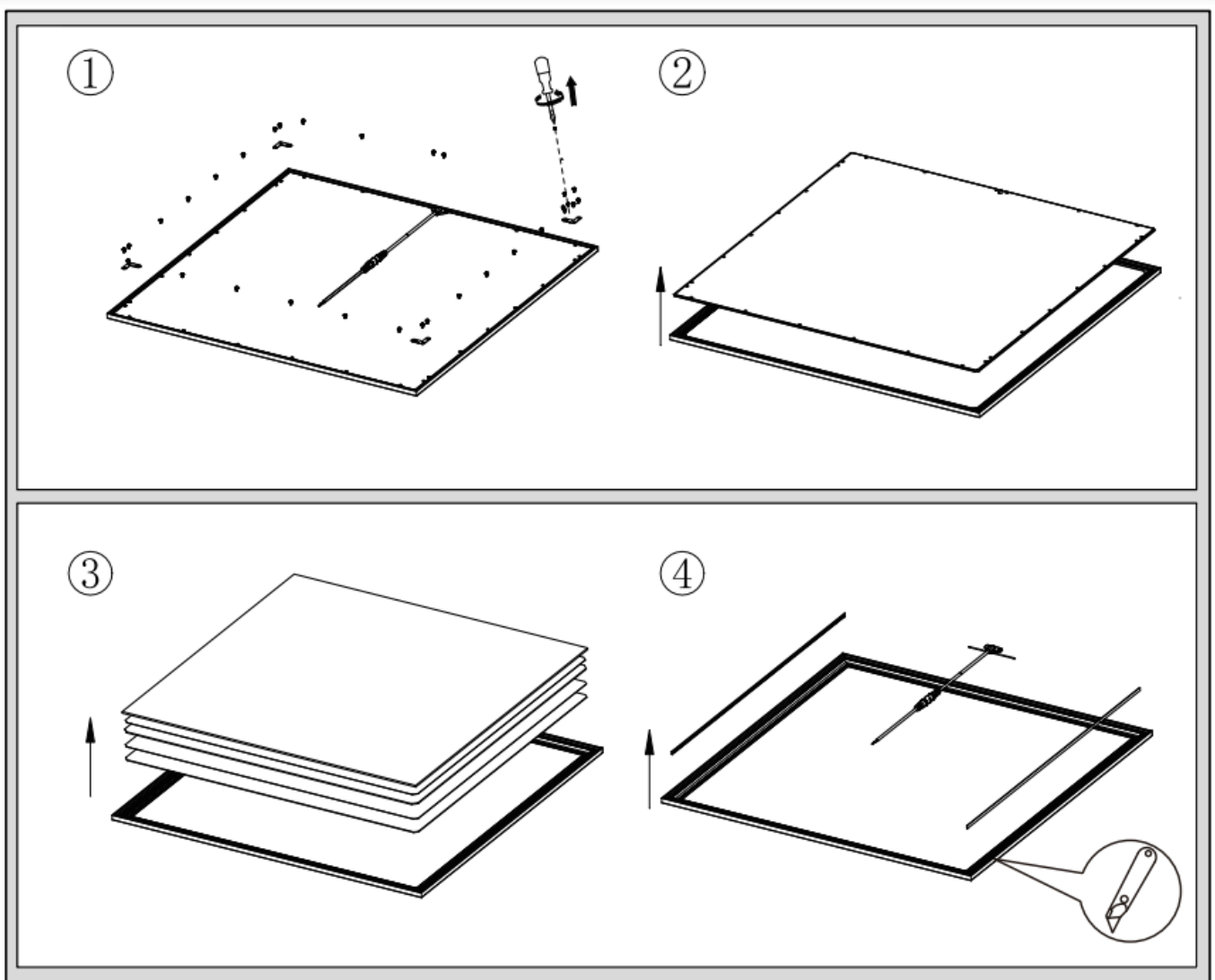
### 3. Q: How long is the warranty period for this product?

A: The warranty period for the Fortimo LED Panel MD3 is one year from the date of purchase.

## EcoDesign Document

**Product:** Fortimo LED Panel MD3

## LS & SCG dismantling instructions (after end of life)



Please inform yourself about the local waste disposal, separation and collection system for electrical and electronic products. Please act according to your local rules and do not dispose . of your old product with your

normal Household waste. The correct Disposal of your product will help prevent potential negative consequences for the environment and human health.

The light source and/or control gear and/or the external flexible cable contained in this luminaire shall only be replaced by the manufacturer or his service agent or a similar qualified person.

© 20232021 Signify Holding

All rights reserved. Reproduction in whole or in part is prohibited without the prior written consent of the copyright owner. The information presented in this document does not form part of any quotation or contract, is believed to be accurate and reliable and may be changed without notice. No liability will be accepted by the publisher for any consequence of its use. Publication thereof does not convey nor imply any license under patent-or other industrial or intellectual property rights.

- Signify Holding
- The Netherlands

---

Documents / Resources

<div>EcoDesignDocument</div> <div>Product:</div> <div>Fortimo LED PanelMD3</div>	<div><a href="#">PHILIPS MD3 Fortimo LED Panel Luminaire Module</a> [pdf] Instruction Manual</div> <div>MD3 Fortimo LED Panel Luminaire Module, MD3, Fortimo LED Panel Luminaire Module, LED Panel Luminaire Module, Panel Luminaire Module, Luminaire Module, Module</div>
--	---

References

- [User Manual](#)