



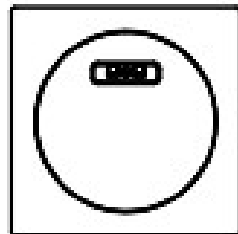
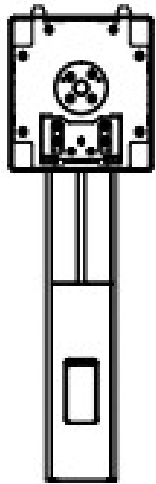
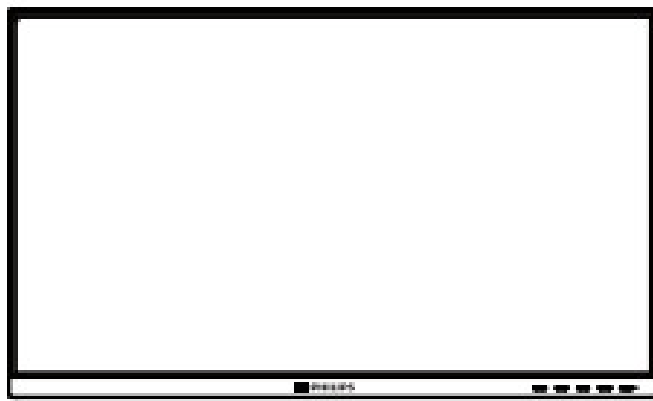
## PHILIPS LED and LCD Display User Guide

[Home](#) » [Philips](#) » PHILIPS LED and LCD Display User Guide 

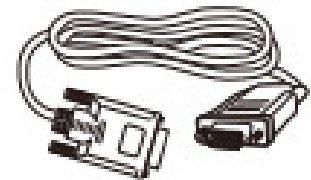


Register your product and get support at  
[www.philips.com/welcome](http://www.philips.com/welcome)  
Quick Start

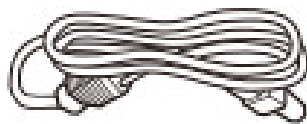




\*CD



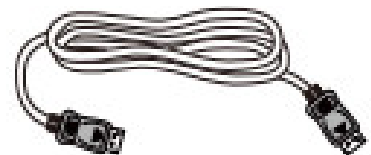
\* VGA



Power



\*HDMI



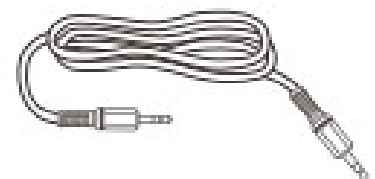
\*DP



\* DVI

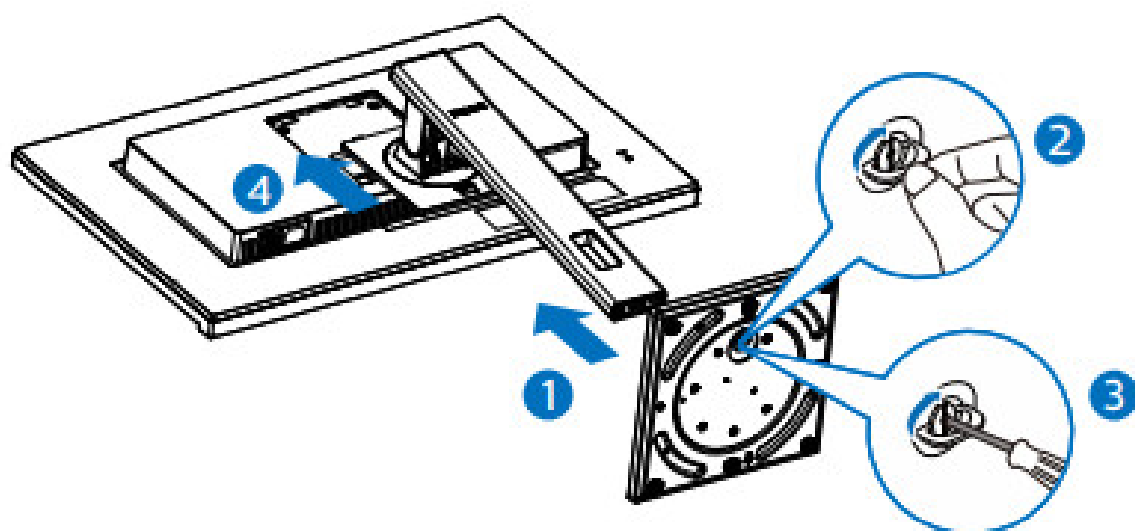


\*USB A-B

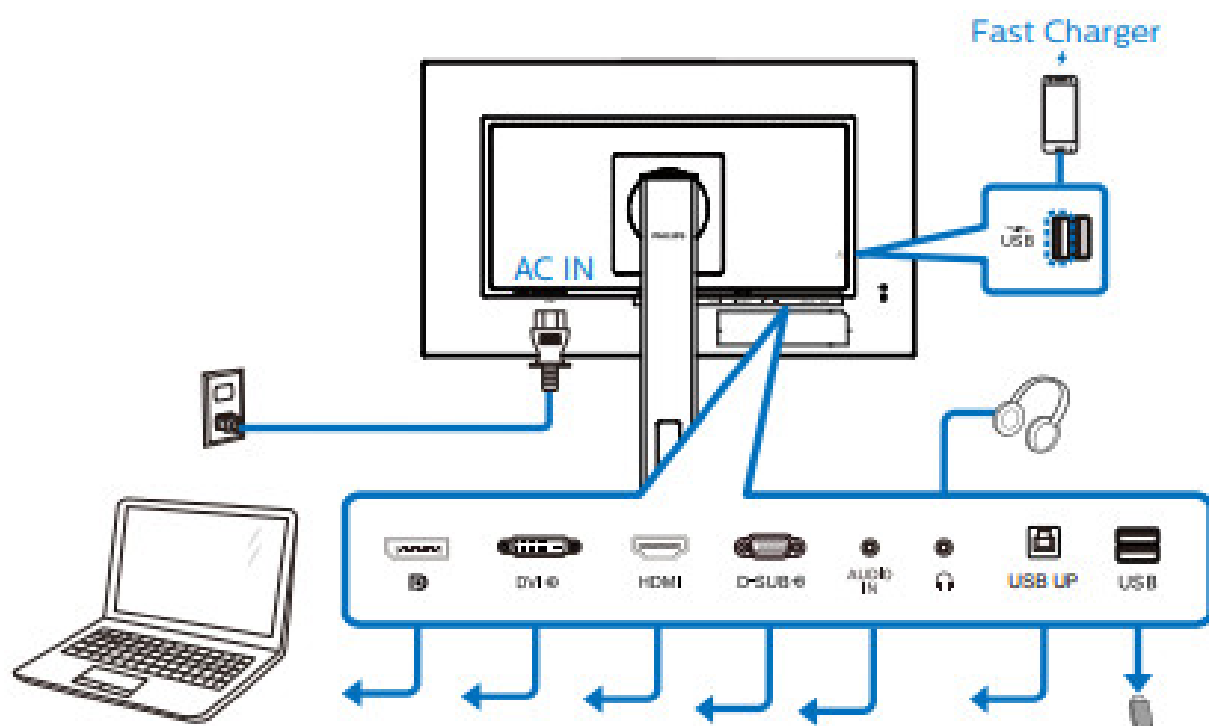


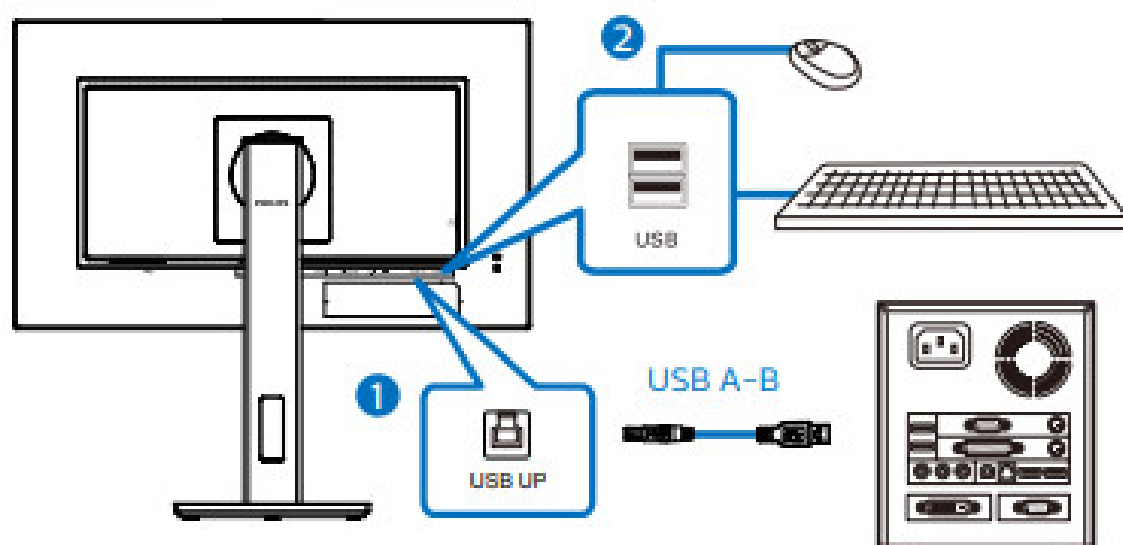
\* Audio cable

1

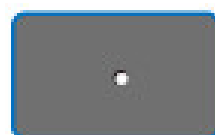
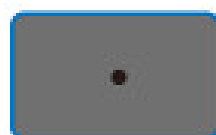
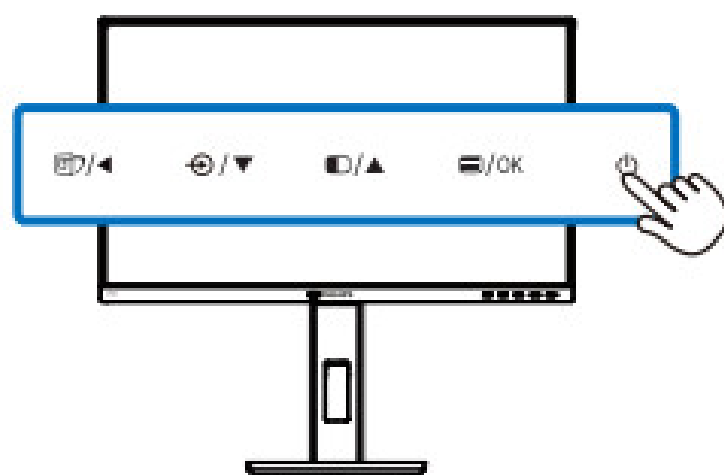


2

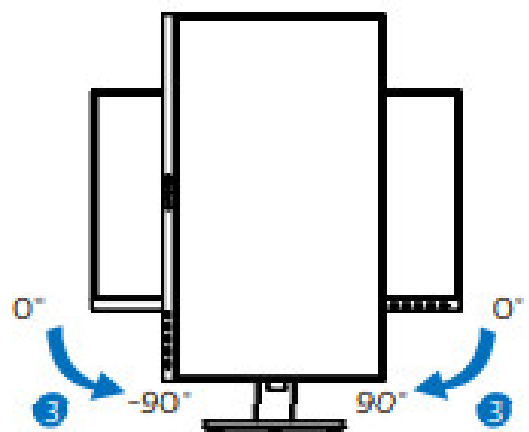
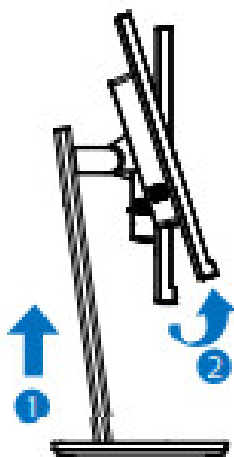
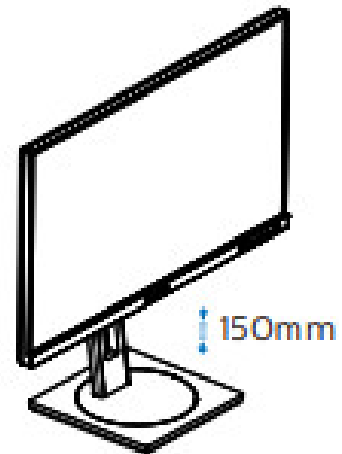
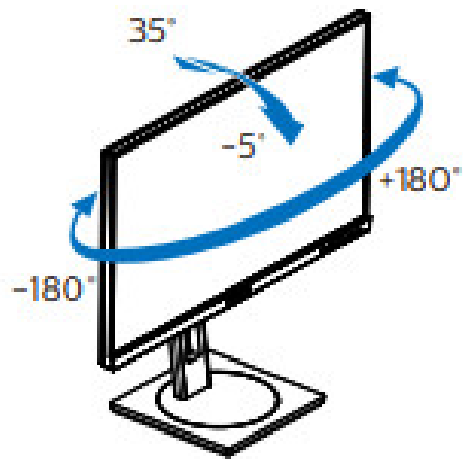




3

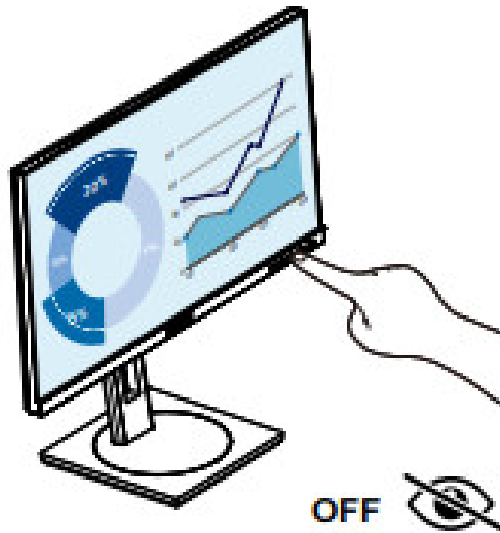


4

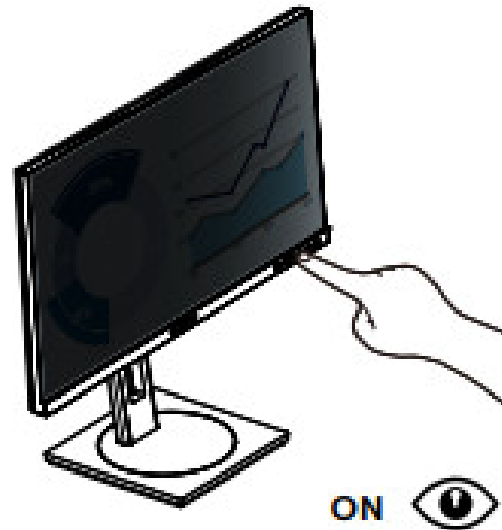




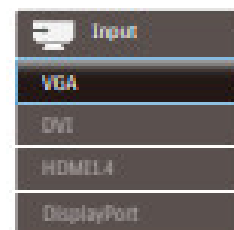
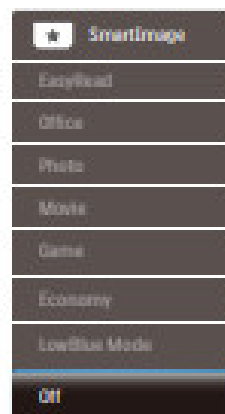
Privacy Mode is Off



Privacy Mode is Off

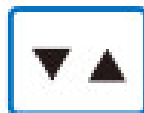


Privacy Mode is On





	PowerSensor	On	
		On	✓
	LightSensor		
	Location Mode		
	Input		
	Picture		
	Audio		
	+		



	PowerSensor	On	
		On	✓
	LightSensor		
	Location Mode		
	Input		
	Picture		
	Audio		
	+		



	PowerSensor	On	
		On	✓
	LightSensor		
	Location Mode		
	Input		
	Picture		
	Audio		
	+		



	PowerSensor	On	
		On	✓
	LightSensor		
	Location Mode		
	Input		
	Picture		
	Audio		
	+		

Activate Windows





**Need help?**

Online help: [www.philips.com/support](http://www.philips.com/support) Go to the above online help for the latest SmartControl software.

Version: M10242BVQ1T

2020 © TOP Victory Investment Ltd. All rights reserved.

This product has been manufactured by and is sold under the responsibility of Top Victory Investments Ltd., and Top Victory Investments Ltd. is the warrantor in relation to this product. Philips and the Philips Shield Emblem have registered trademarks of Koninklijke Philips N.V. and are used under license.

Specifications are subject to change without notice.

[www.philips.com](http://www.philips.com)

**HDMI**

HDMI trademarks and related patents on technologies belong to their respective owners.



Printed in China



**H41G78S281341A**

**Contents**

- [1 Documents / Resources](#)
- [1.1 References](#)
- [2 Related Posts](#)

**Documents / Resources**

	<p><a href="#">PHILIPS LED and LCD Display</a> [pdf] User Guide LED and LCD Display</p>
-----------------------------------------------------------------------------------	---------------------------------------------------------------------------------------------

**References**

- [!\[\]\(815df092dd722ee9268ef8e6d0193e3a\_img.jpg\) Philips - United States | Philips](#)
- [!\[\]\(c72edb9626cad660f3a9f5fb0f22a68c\_img.jpg\) Philips Customer Service Support - Home | Philips](#)
- [!\[\]\(0c564128c6342bd2f601e97f4518828a\_img.jpg\) Product registration | Philips](#)