



PHILIPS LCD monitor with USB-C User Guide

[Home](#) » [Philips](#) » PHILIPS LCD monitor with USB-C User Guide

PHILIPS



Philips
LCD monitor with USB-C

B Line

24 (23.8" / 60.5 cm diag.) 1920 x 1080 (Full HD)

243B9

Contents [[hide](#)

- [1 Simplify your connections](#)
- [2 Highlights](#)
- [3 IPS technology](#)
- [4 SmartErgoBase](#)
- [5 Flicker-free technology](#)
- [6 LowBlue Mode](#)
- [7 HDMI Ready](#)
- [8 PowerSensor](#)
- [9 Specifications](#)
- [10 Documents / Resources](#)
 - [10.1 References](#)
- [11 Related Posts](#)

Simplify your connections

with USB-C docking monitor

The Philips B line monitor with USB-C docking replaces cable clutter. View Full HD image and re-charge your laptop, all at the same time with a single USB-C cable. SmartErgo base, Flicker-free, and LowBlue mode make

work easy-on-the eyes.

Single cable USB-C connection

- Connect your notebook with one USB-C cable
- Power and re-charge compatible notebook from the monitor
- USB 3.2 high-speed data transfer

Excellent performance

- IPS technology for full colors and wide viewing angles
- Designed for the way you work
- SmartErgoBase enables people-friendly ergonomic adjustments
- Less eye fatigue with Flicker-free technology
- LowBlue Mode for easy-on-the-eyes productivity
- HDMI ensures universal digital connectivity

Designed for sustainability

- PowerSensor saves up to 70% energy costs
- 100% Recycled packing material

LCD monitor with USB-C

B Line 24 (23.8" / 60.5 cm diag.), 1920 x 1080 (Full HD)

Highlights

USB-C connection

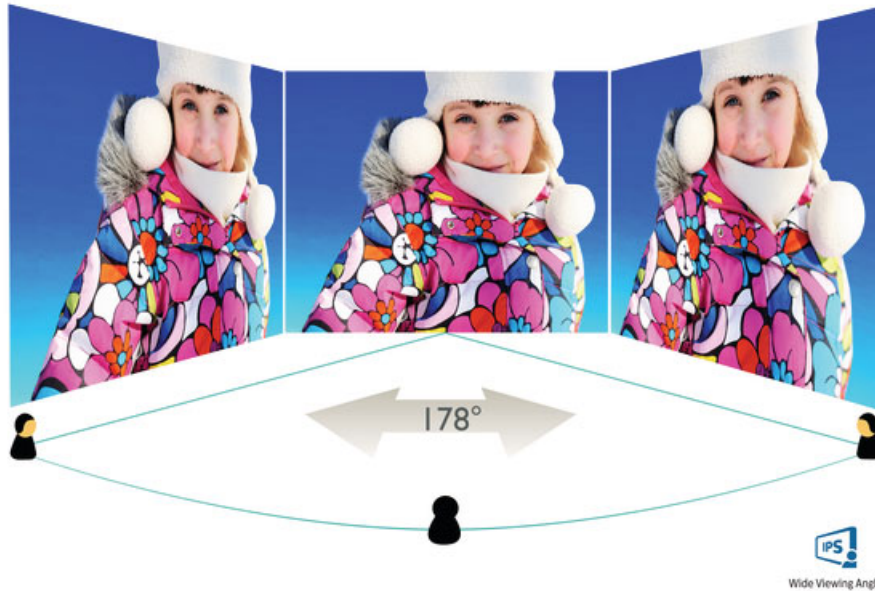


This Philips display features a USB Type-C connector with power delivery. With intelligent and flexible power management, you can power charge your compatible laptop directly. Its slim, reversible USB-C allows for an easy, one-cable connection. You can watch the high-resolution video and transfer data at a super-speed while powering up and recharging your notebook at the same time.

Power & re-charge notebook

This monitor features a built-in USB-C connector that meets USB Power Delivery standard. With intelligent and flexible power management, you can now power up and or re-charge your compatible* Notebook directly from the Monitor using a single USB-C cable.

IPS technology



IPS displays use advanced technology which gives you extra-wide viewing angles of 178/178 degree, making it possible to view the display from almost any angle – even in 90-degree Pivot mode! Unlike standard TN panels, IPS displays gives you remarkably crisp images with vivid colors, making it ideal not only for Photos, movies and web browsing but also for professional applications which demand color accuracy and consistent brightness at all times.

SmartErgoBase



The SmartErgoBase is a monitor base that delivers ergonomic display comfort and provides cable management. The base's people-friendly height, swivel, tilt and rotation angle adjustments position the monitor for maximum comfort that can ease the physical strains of a long workday; cable management reduces cable clutter and keeps the workspace neat and professional.

Flicker-free technology



Due to the way brightness is controlled on LED-backlit screens, some users experience flicker on their screen which causes eye fatigue. Philips Flicker-free Technology applies a new solution to regulate brightness and reduce flicker for more comfortable viewing.

LowBlue Mode



Studies have shown that just as ultra-violet rays can cause eye damage, shortwave length blue light rays from LED displays can cause eye damage and affect vision over time. Developed for wellbeing, Philips LowBlue Mode setting uses smart software technology to reduce harmful shortwave blue light.

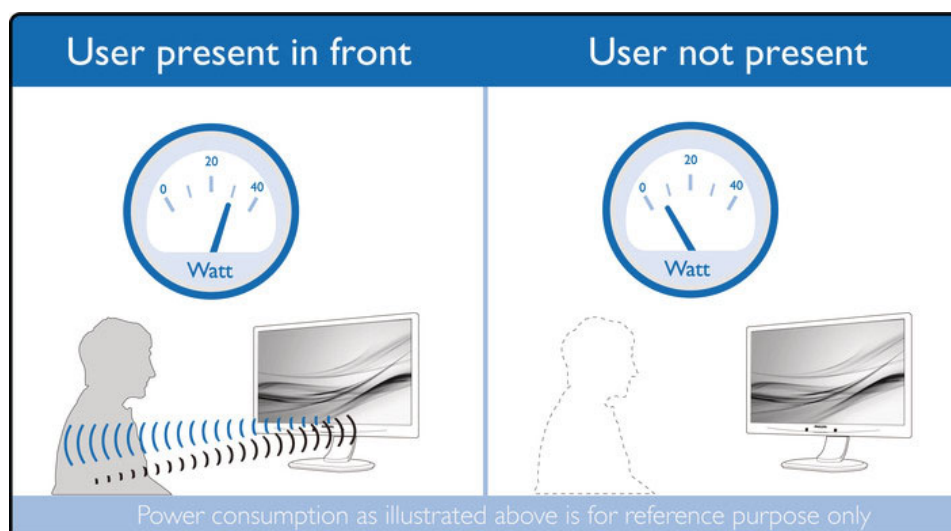
HDMI Ready



HDMI-ready

An HDMI-ready device has all the required hardware to accept High-Definition Multimedia Interface (HDMI) input. A HDMI cable enables high-quality digital video and audio all transmitted over a single cable from a PC or any number of AV sources (including set-top boxes, DVD players, A/V receivers and video cameras).

PowerSensor



PowerSensor is a built-in 'people sensor' that transmits and receives harmless infrared signals to determine if user is present and automatically reduces monitor brightness when then user steps away from the desk, cutting energy costs by up to 70 percent and prolonging monitor life.



USB-C Docking



Wide Viewing Angle



Ultra Narrow Bezel



Flicker-free



EasyRead



LowBlue Mode



HDMI



Built-in Speaker



PowerSensor

LCD monitor with USB-C

B Line 24 (23.8" / 60.5 cm diag.), 1920 x 1080 (Full HD)

Specifications

Picture/Display

- LCD panel type: IPS technology
- Backlight type: W-LED system
- Panel Size: 23.8 inch / 60.5 cm
- Display Screen Coating: Anti-Glare, 3H, Haze 25%
- Effective viewing area: 527 (H) x 296.5 (V)
- Aspect ratio: 16:9
- Maximum resolution: 1920 x 1080 @ 75 Hz*
- Pixel Density: 93 PPI
- Response time (typical): 4 ms (Gray to Gray)*
- Brightness: 250 cd/m²
- Contrast ratio (typical): 1000:1
- SmartContrast: 50,000,000:1
- Pixel pitch: 0.275 x 0.275 mm
- Viewing angle: 178° (H) / 178° (V), @ C/R > 10
- Picture enhancement: SmartImage
- Display colors: 16.7M
- Color gamut (typical): NTSC 90%*, sRGB 104%*
- Scanning Frequency: 30 – 85 kHz (H) / 48 – 75 Hz (V)
- sRGB
- Flicker-free
- LowBlue Mode
- EasyRead
- Adaptive sync

Connectivity

- Signal Input: VGA (Analog), DisplayPort 1.2 x 1, HDMI 1.4 x 1, USB-C 3.2 Gen 1 x 1 (upstream, power delivery up to 65W)
- HDCP: HDCP 1.4 (DP / HDMI / USB-C)
- USB:: USB-C 3.2 Gen 1 x 1 (upstream), USB 3.2 x 4 (downstream with 1 fast charge B.C 1.2)
- Audio (In/Out): PC audio-in, Headphone out
- Sync Input: Separate Sync, Sync on Green

USB docking

- USB-C: Reversible plug connector
- Super speed: Data and Video transfer
- DP: Built-in Display Port Alt mode
- USB-C power delivery: USB PD version 3.0
- USB-C max. power delivery: Up to 65W (5V/3A; 9V/3A; 10V/3A; 12V/3A; 15V/3A; 20V/3.25A)

Convenience

- Built-in Speakers: 2 W x 2

- User convenience: SmartImage, Input, PowerSensor, Menu, Power On/Off
- Control software: SmartControl
- OSD Languages: Brazil Portuguese, Czech, Dutch, English, Finnish, French, German, Greek, Hungarian, Italian, Japanese, Korean, Polish, Portuguese, Russian, Simplified Chinese, Spanish, Swedish, Traditional Chinese, Turkish, Ukrainian
- Other convenience: Kensington lock, VESA mount (100x100mm)
- Plug & Play Compatibility: DDC/CI, Mac OS X, sRGB, Windows 10 / 8.1 / 8 / 7

Stand

- Height adjustment: 150 mm
- Pivot: -/+ 90 degree
- Swivel: -/+ 175 degree
- Tilt: -5 ~ 30 degree

Power

- ECO mode: 12.8 W (typ.)
- On mode: 14.99 W (typ.) (EnergyStar test method)
- Standby mode: < 0.3 W (typ.)
- Off mode: Zero watts with Zero switch
- Energy Label Class: A
- Power LED indicator: Operation – White, Standby mode- White (blinking)
- Power supply: Built-in, 100-240VAC, 50-60Hz

Dimensions

- Product with stand(max height): 541 x 522 x 216 mm
- Product without stand (mm): 541 x 332 x 63 mm
- Packaging in mm (WxHxD): 600 x 475 x 198 mm

Weight

- Product with stand (kg): 5.19 kg
- Product without stand (kg): 3.57 kg
- Product with packaging (kg): 6.89 kg

Operating conditions

- Temperature range (operation): 0°C to 40°C °C
- Temperature range (storage): -20°C to 60°C °C
- Relative humidity: 20%-80 %
- Altitude: Operation: +12,000ft (3,658m), Non- operation: +40,000ft (12,192m)
- MTBF (demonstrated): 70,000 hrs (excluded backlight)

Sustainability

- Environmental and energy: EnergyStar 8.0, PowerSensor, TCO Certified Edge, WEEE, RoHS
- Recyclable packaging material: 100 %
- Post-consumer recycled plastic: 85%
- Specific Substances: PVC / BFR free housing, Mercury-free, Lead-free

Compliance and standards

- Regulatory Approvals: CE Mark, FCC Class B, SEMKO, CU-EAC, TUV Ergo, TUV/GS, EPA, ICES003, UKRAINIAN, CB

Cabinet

- Front bezel: Black
- Rear cover: Black
- Foot: Black
- Finish: Texture

What's in the box?

- Monitor with stand
- Cables: HDMI cable, DP cable, USB-C to C/A cable, Power cable
- User Documentation



Issue date 2020-04-17
Version: 5.0.1

12 NC: 8670 001 62568
EAN: 87 12581 76198 1

© 2020 Koninklijke Philips N.V.
All Rights reserved.


Specifications are subject to change without notice. Trademarks are the property of Koninklijke Philips N.V. or their respective owners.

www.philips.com

* "IPS" word mark/trademark and related patents on technologies belong to their respective owners.

- * The maximum resolution works for either HDMI, DP or USB-C input.
- * Response time value equal to SmartResponse
- * NTSC Area based on CIE1976
- * sRGB Area based on CIE 1931
- * Activities such as screen sharing, on-line streaming video and audio over the Internet can impact your network performance. Your hardware, network bandwidth and its performance will determine overall audio and video quality.
- * For USB-C power and charging function, your Notebook/device must support USB-C standard Power Delivery specifications. Please check with your Notebook user manual or manufacturer for more details.
- * For Video transmission via USB-C, your Notebook/device must support USB-C DP Alt mode
- * The monitor may look different from feature images.

Documents / Resources

| | |
|--|---|
|  <p>Simplify your connections with USB-C, charging & video in one cable. The monitor and USB-C cable support video transmission up to 4K@60Hz and power delivery up to 65W. The monitor also supports USB-C audio and USB-C data transfer.</p> <p>PHILIPS</p> | <p>PHILIPS LCD monitor with USB-C [pdf] User Guide B Line LCD monitor with USB-C, 243B9</p> |
|--|---|

References

-  [Philips - United States](#) | [Philips](#)