



PHILIPS Lcd Monitor With Smoothtouch User Guide

[Home](#) » [Philips](#) » PHILIPS Lcd Monitor With Smoothtouch User Guide

Contents [[hide](#)]

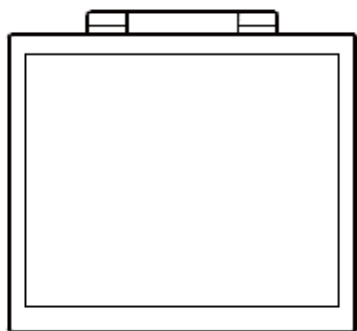
- [1 PHILIPS Lcd Monitor With Smoothtouch](#)
- [2 In The Box?](#)
- [3 Assembly](#)
- [4 Function](#)
- [5 Documents / Resources](#)
 - [5.1 References](#)
- [6 Related Posts](#)



PHILIPS Lcd Monitor With Smoothtouch



In The Box?



* CD



* Stylus



AC/DC Adapter



* Audio cable



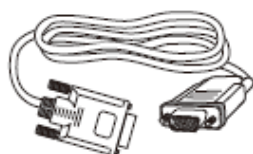
* USB A-B



* DVI



* DP

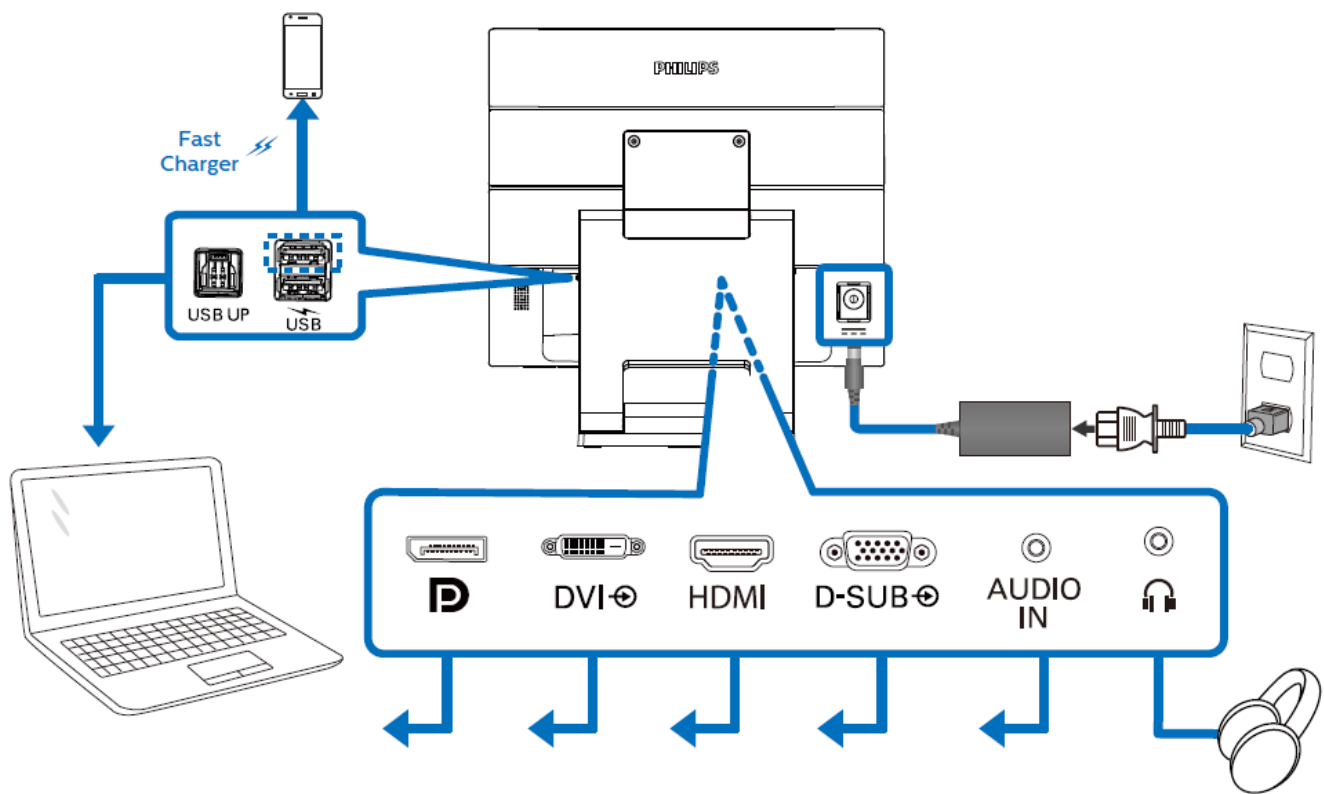


* VGA

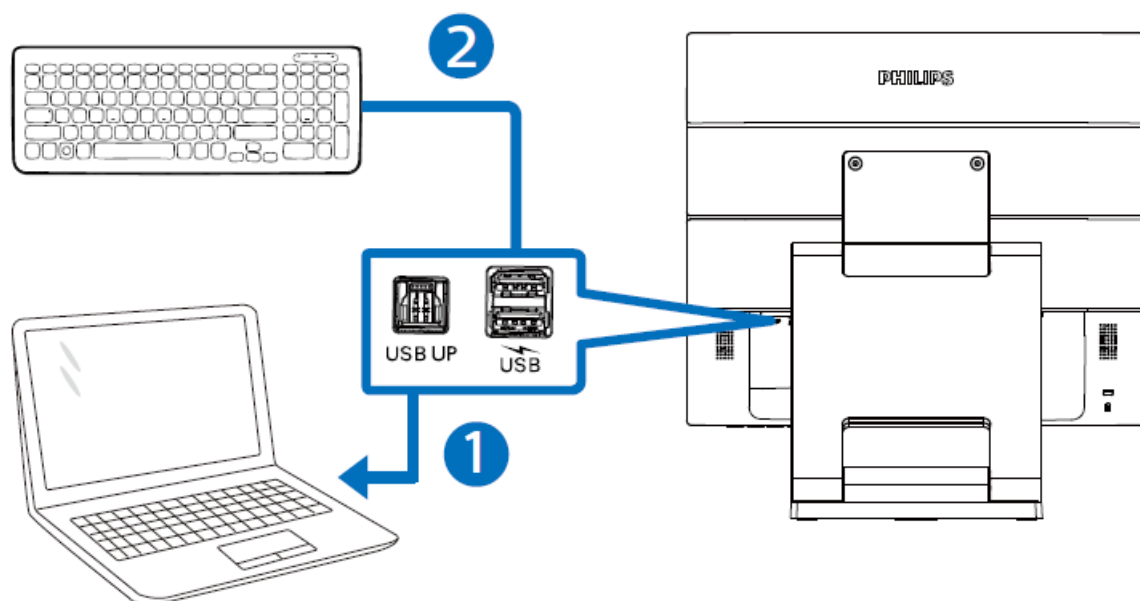


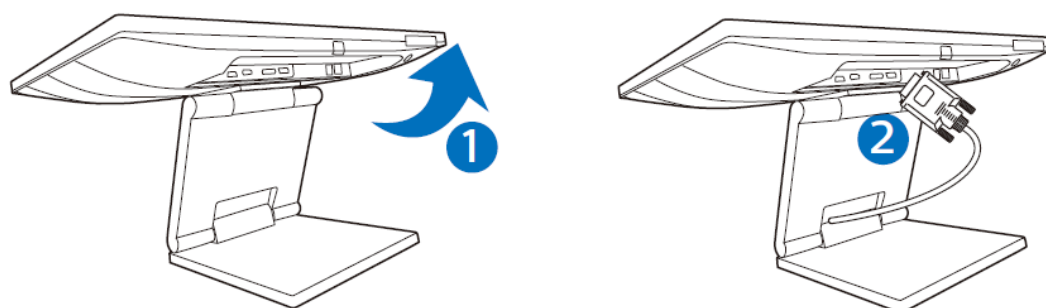
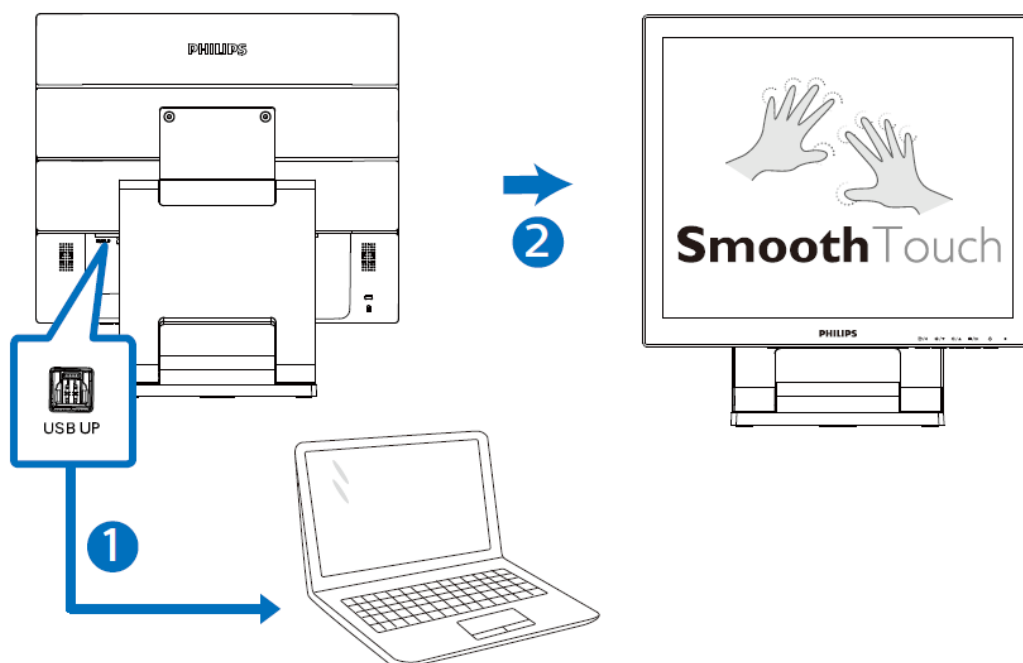
* HDMI

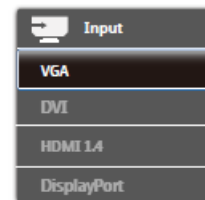
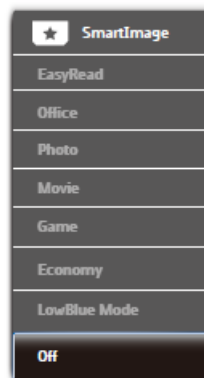
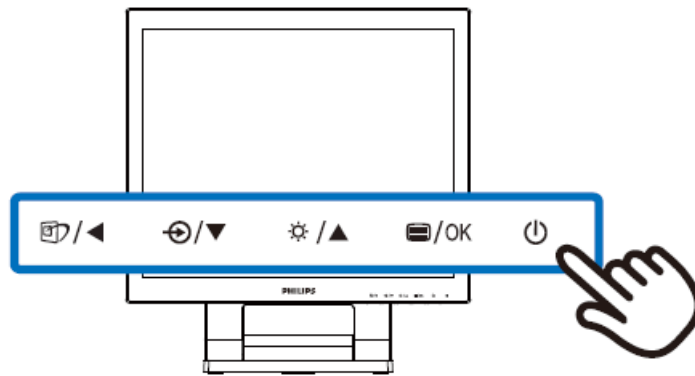
Assembly



USB hub









LowBlue Mode	On	
	Off	✓
Input		
Picture		
Audio		
Color		
Language		
▼		



LowBlue Mode	On	
	Off	✓
Input		
Picture		
Audio		
Color		
Language		
▼		

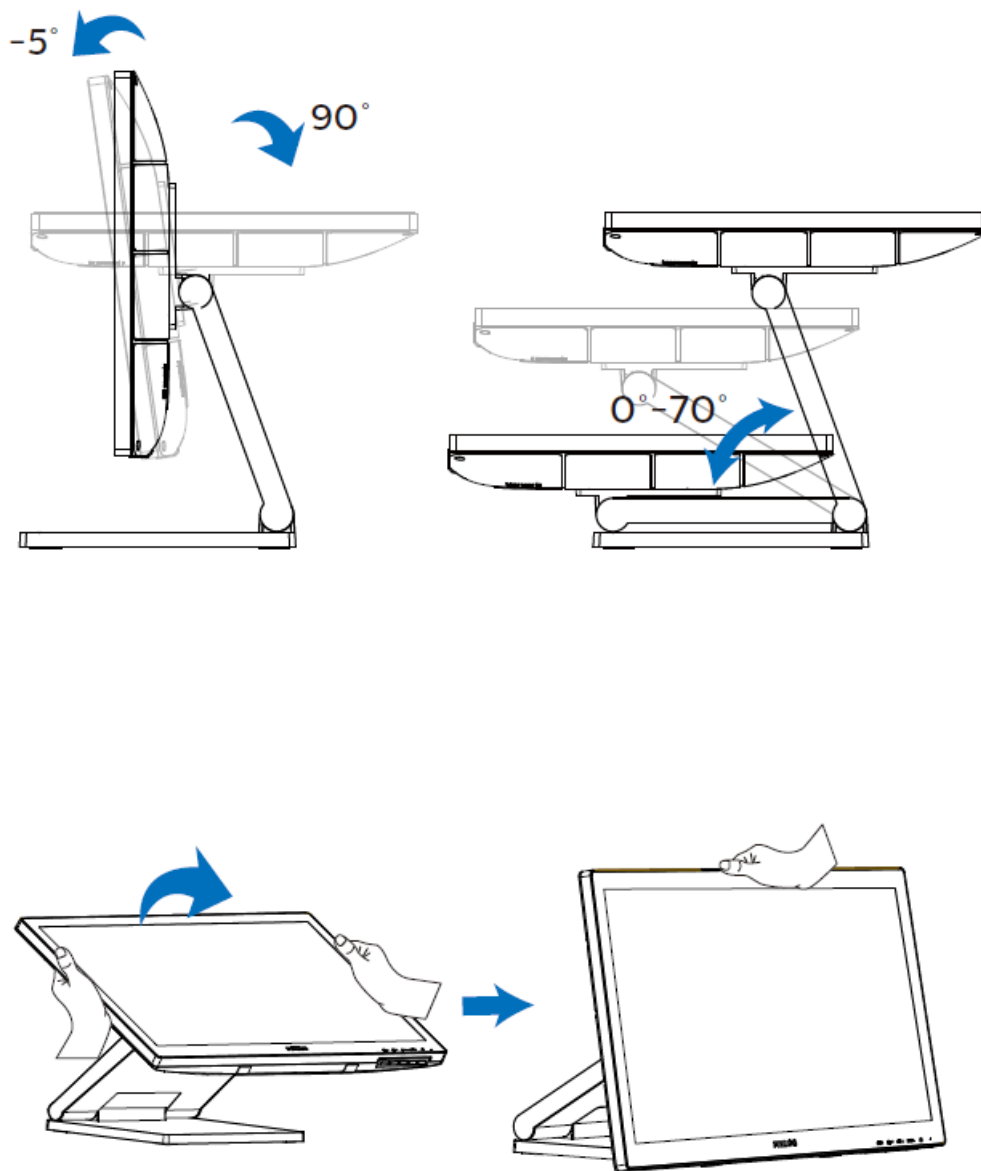


LowBlue Mode	On	
	Off	✓
Input		
Picture		
Audio		
Color		
Language		
▼		



LowBlue Mode	On	
	Off	✓
Input		
Picture		
Audio		
Color		
Language		
▼		

Function



Need help?

Online help: www.philips.com/support

Version: M917BQ1WWT

2019 © TOP Victory Investment Ltd. All rights reserved.


This product has been manufactured by and is sold under the responsibility of Top Victory Investments Ltd., and Top Victory Investments Ltd. is the warrantor in relation to this product. Philips and the Philips Shield Emblem are registered trademarks of Koninklijke Philips N.V. and are used under license.

Specifications are subject to change without notice.

HDMI trademark and related patents on technologies belong to their respective owners.



Documents / Resources

	<p>PHILIPS Lcd Monitor With Smoothtouch [pdf] User Guide Lcd Monitor With Smoothtouch, B line 172B9T</p>
-----------------------------------------------------------------------------------	------------------------------------------------------------------------------------------------------------------------------

References

- [Philips - United States | Philips](#)
- [Philips Customer Service Support - Home | Philips](#)
- [Product registration | Philips](#)