

PHILIPS
dynalite
DDBC1200
Signal
Dimmer
Controller



PHILIPS dynalite DDBC1200 Signal Dimmer Controller Instruction Manual

[Home](#) » [Philips](#) » PHILIPS dynalite DDBC1200 Signal Dimmer Controller Instruction Manual 

Contents

- [1 PHILIPS dynalite DDBC1200 Signal Dimmer Controller](#)
- [2 Product Information](#)
- [3 Product Usage Instructions](#)
- [4 WHAT'S INCLUDE](#)
- [5 DIMENSION](#)
- [6 INSTALLATION](#)
- [7 Documents / Resources](#)
 - [7.1 References](#)
- [8 Related Posts](#)

PHILIPS
dynalite

PHILIPS dynalite DDBC1200 Signal Dimmer Controller



Product Information

Specifications:

- **Model:** DDBC1200
- **Product:** Signal Dimmer Controller
- **Dimensions:** 103 mm x 93 mm x 45 mm
- **IEC Pollution Degree:** II
- **Control Channels:** 2
- **Input Voltage:** 100-240 V
- **Input Current:** 0.5 A
- **Maximum Load per Channel:** 80 mA
- **Insulation:** Basic
- **Communication Protocols:** DALI, DSI 0-10 V

Product Usage Instructions

Installation Requirements:

Devices must be installed in an approved enclosure by a qualified electrician by all national and local electrical and construction codes and regulations.

Connections:

The controller supports DALI and DSI 0-10 V control channels. Make sure to connect the power supply, control channels, and communication protocols correctly following the provided diagram.

Programming:

Refer to the user manual for programming instructions to set up the dimmer controller according to your specific lighting requirements.

Testing:

After installation, test each control channel to ensure proper functionality. Adjust settings as needed to achieve the desired lighting effects.

Frequently Asked Questions (FAQ):

- **Q: What should I do if the controller causes radio interference in a domestic environment?**

A: If the product causes radio interference, take adequate measures as required. You may need to adjust the installation or seek professional advice to mitigate the interference.

- **Q: Does the product comply with specific regulations?**

A: Yes, this Class A digital apparatus complies with Canadian ICES-003: CAN ICES-3 (A)/NMB-3(A). Ensure proper installation and usage to maintain compliance.

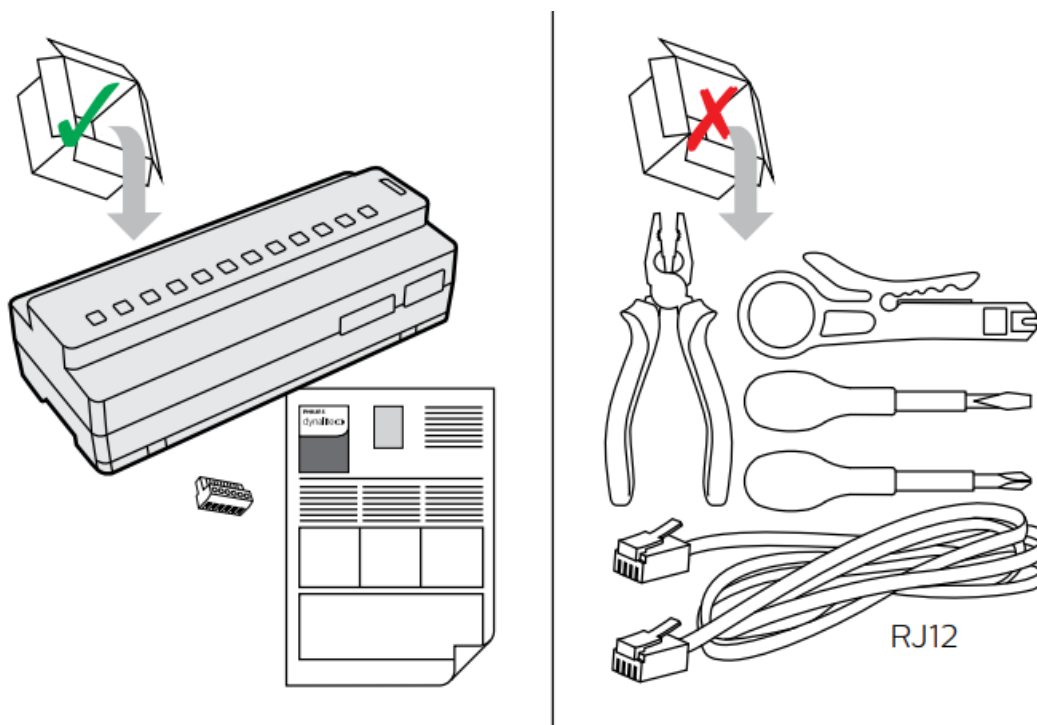
- **Q: Where can I find more information about the product?**

A: For more information and support, visit the official website at www.dynalite.com. You can also refer to the user manual for detailed instructions on product usage and troubleshooting.

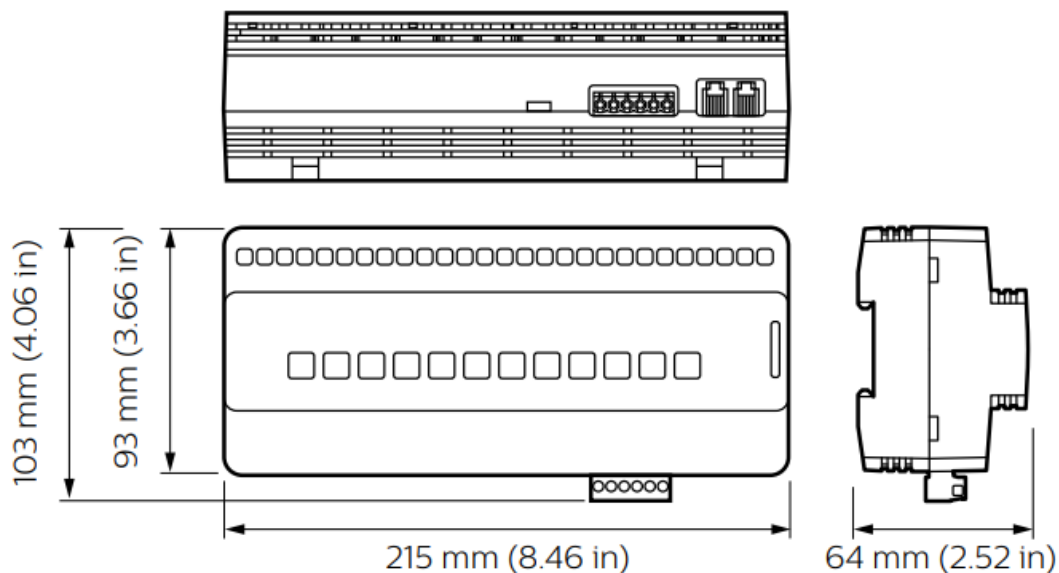
Note: The information provided is based on the user manual excerpt and general product knowledge. Refer to the official documentation for comprehensive details.

Devices must be installed in an approved enclosure by a qualified electrician by all national and local electrical and construction codes and regulations.

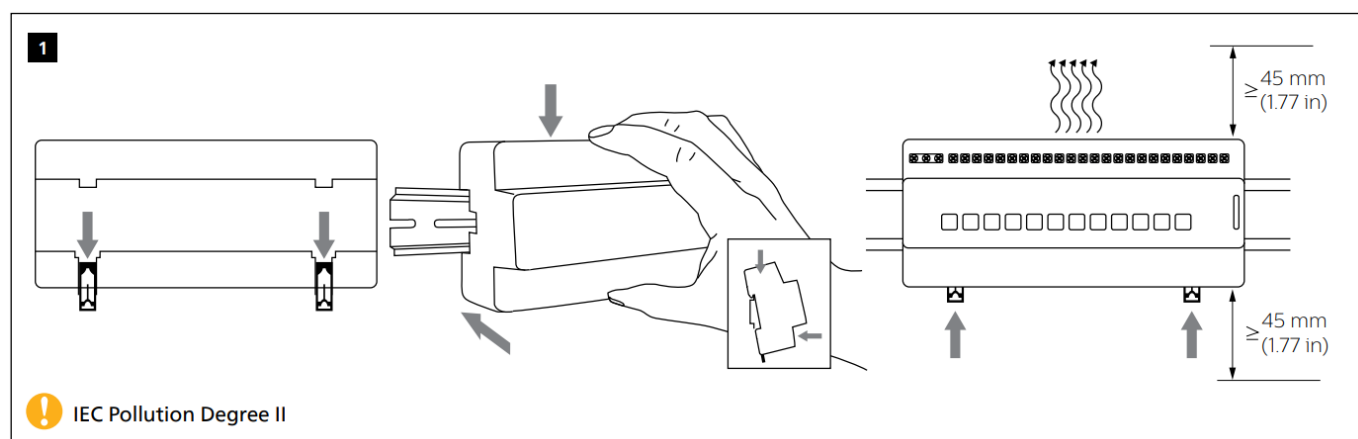
WHAT'S INCLUDE



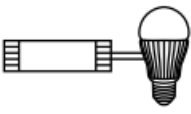
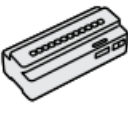
DIMENSION

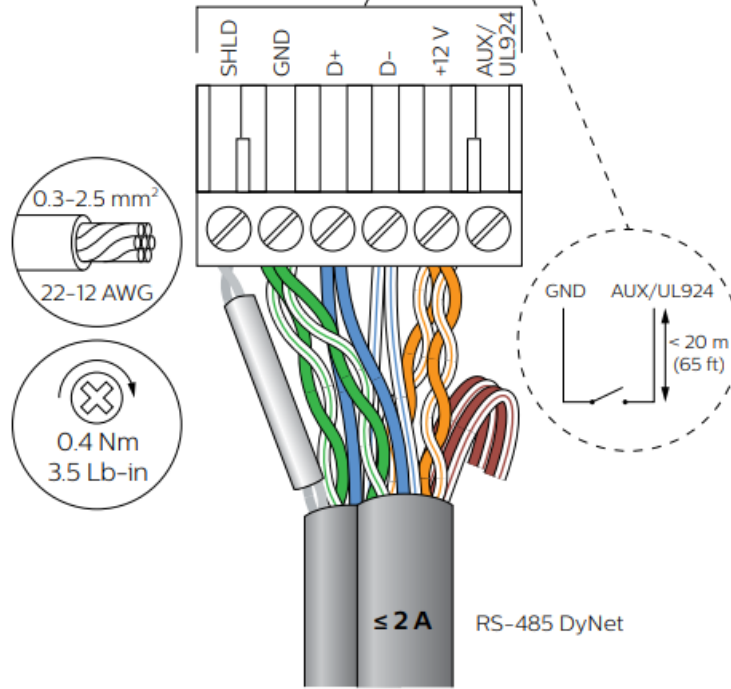
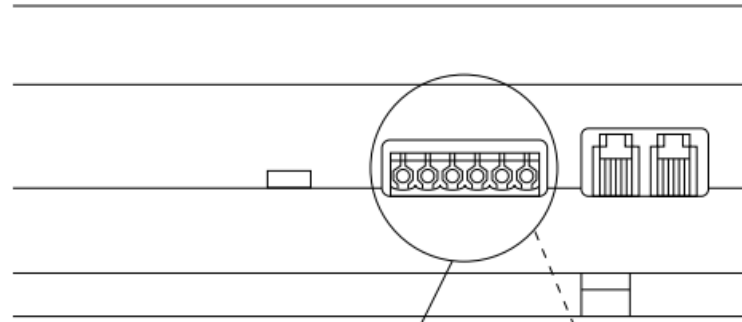


INSTALLATION

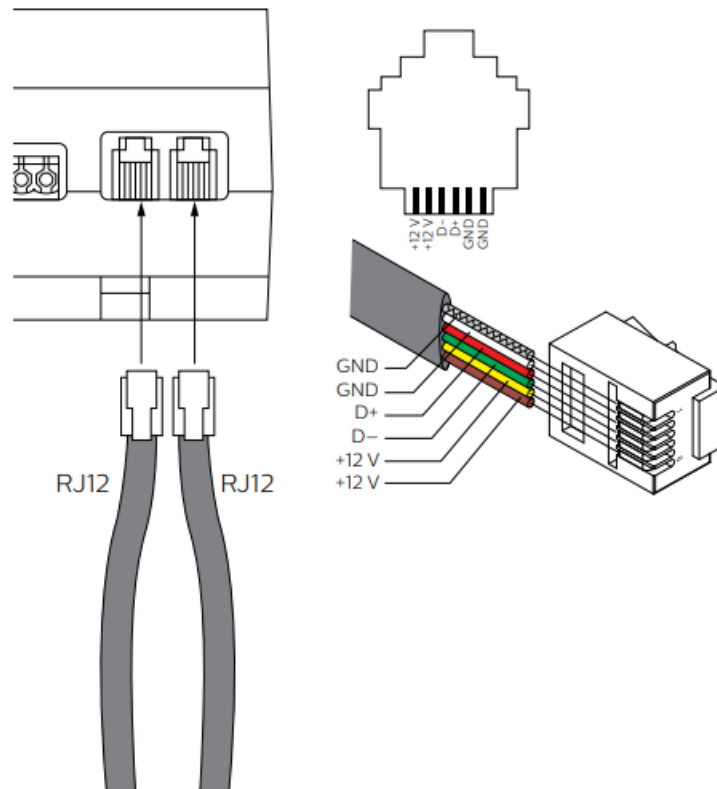


Control Channel Ratings

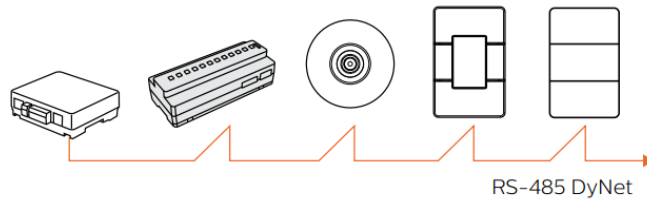
		
DALI Broadcast	$\leq 80/\text{CH}$ Guaranteed 160 mA Maximum 250 mA Insulation: basic	≤ 300
DSI	$\leq 80/\text{CH}$	≤ 300
0-10 V	Sink 50 mA Source 50 mA	Driver dependent



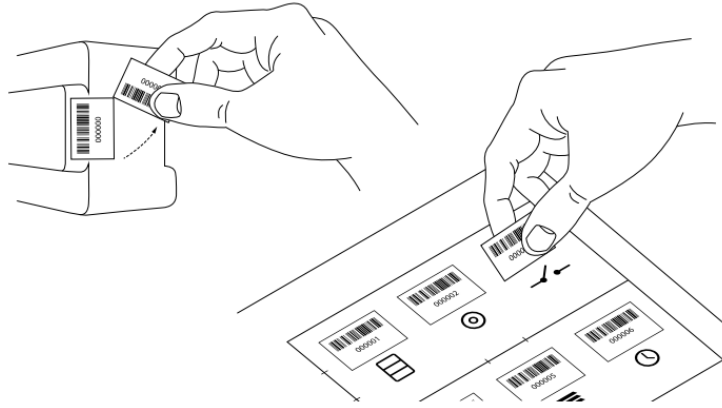
4 B



5



6



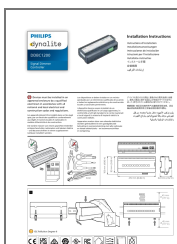
This is a Class A product. In a domestic environment, this product may cause radio interference, in which case the user may be required to take adequate measures. Federal Communications Commission (FCC) Compliance Notice: Radio Frequency Notice – This equipment has been tested and found to comply with the limits for a Class A digital device, under part 15 of the FCC Rules. These limits are designed to provide reasonable protection against harmful interference when the equipment is operated in a commercial environment. This equipment generates, uses, and can radiate radio frequency energy and, if not installed and used by the instruction manual, may cause harmful interference to radio communications. Operation of this equipment in a residential area is likely to cause harmful interference in which case the user will be required to correct the interference at his own expense.

This Class A digital apparatus complies with Canadian ICES-003: CAN ICES-3 (A)/NMB-3(A).

© 2024 Signify Holding. All rights reserved. Specifications are subject to change without notice. No representation or warranty as to the accuracy or completeness of the information included herein is given and any liability for any action in reliance thereon is disclaimed. Philips and the Philips Shield Emblem are registered trademarks of Koninklijke Philips N.V. All other trademarks are owned by Signify Holding or their respective owners.


www.dynalite.com

Documents / Resources



[PHILIPS dynalite DDBC1200 Signal Dimmer Controller](#) [pdf] Instruction Manual
DDBC1200, dynalite DDBC1200 Signal Dimmer Controller, dynalite DDBC1200, dynalite, dynalite Signal Dimmer Controller, DDBC1200 Signal Dimmer Controller, Signal Dimmer Controller, Signal Controller, Dimmer Controller, Controller

References

-  [Philips Dynalite - Lighting Controls, Lighting Management](#)
- [User Manual](#)

Manuals+, Privacy Policy

This website is an independent publication and is neither affiliated with nor endorsed by any of the trademark owners. The "Bluetooth®" word mark and logos are registered trademarks owned by Bluetooth SIG, Inc. The "Wi-Fi®" word mark and logos are registered trademarks owned by the Wi-Fi Alliance. Any use of these marks on this website does not imply any affiliation with or endorsement.