



PHILIPS DVT2010 VoiceTracer Audio Recorder User Guide

[Home](#) » [Philips](#) » PHILIPS DVT2010 VoiceTracer Audio Recorder User Guide 



VoiceTracer
DVT2010
DVT2015



Quick start guide

For product information and support, visit help.voicetracer.com/dvt2010



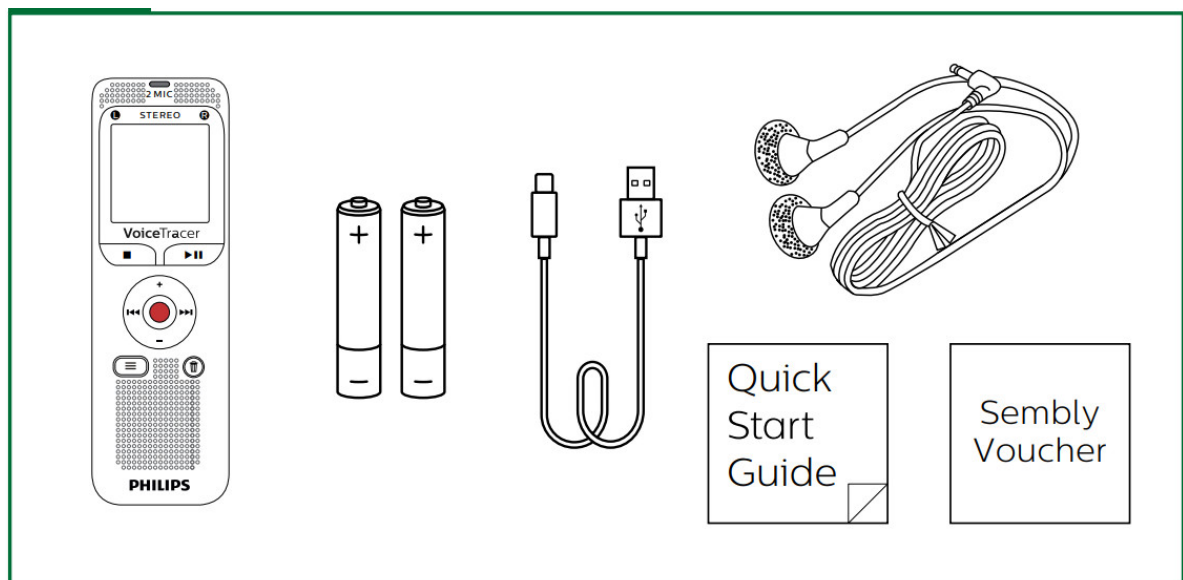
<http://help.voicetracer.com/dvt2010>

Contents

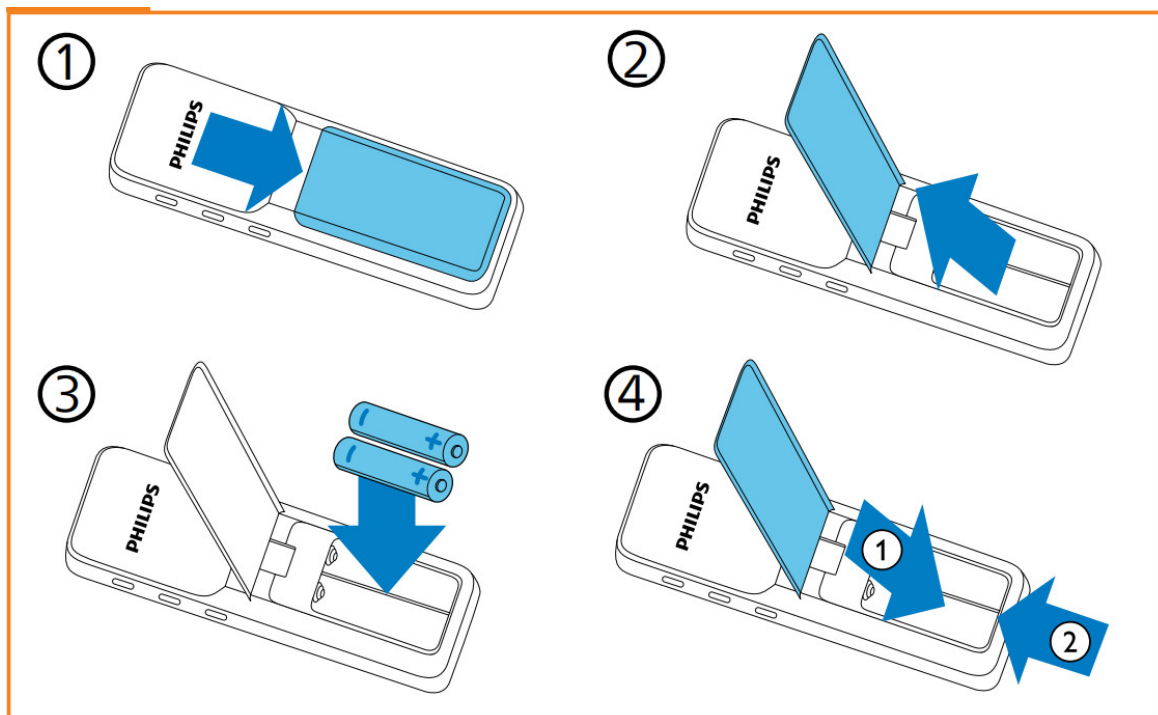
- 1 What's in the box
- 2 Insert batteries
- 3 Power on/off
- 4 Set the device language
- 5 Record
- 6 Playback
- 7 Change folder
- 8 Delete recordings
- 9 Change recording quality
- 10 Change microphone sensitivity
- 11 Set the date and time
- 12 Documents / Resources
 - 12.1 References
- 13 Related Posts



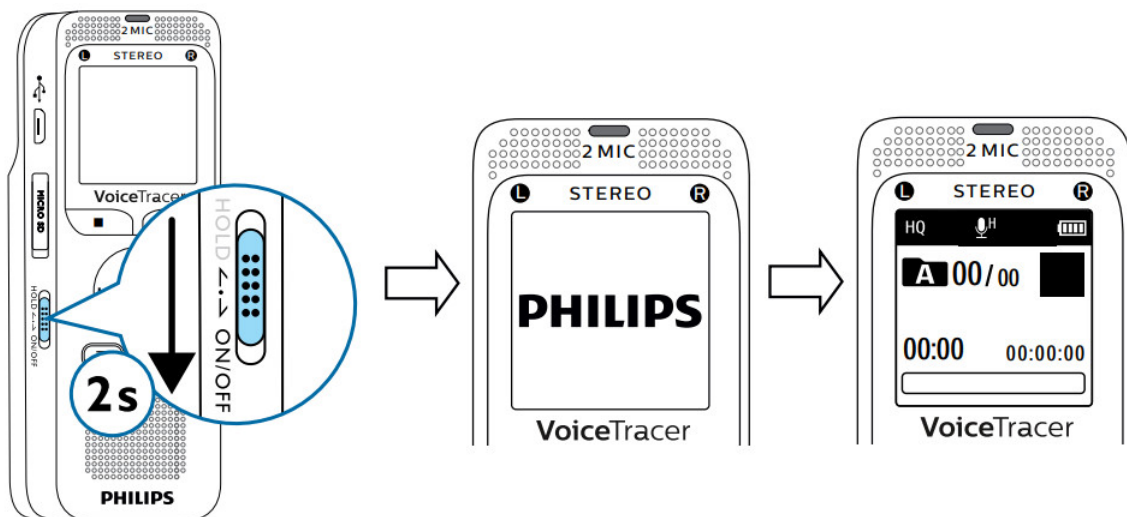
What's in the box



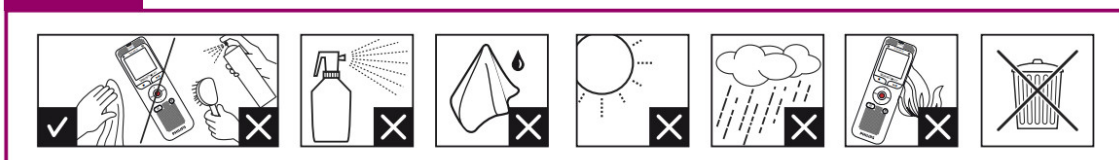
Insert batteries



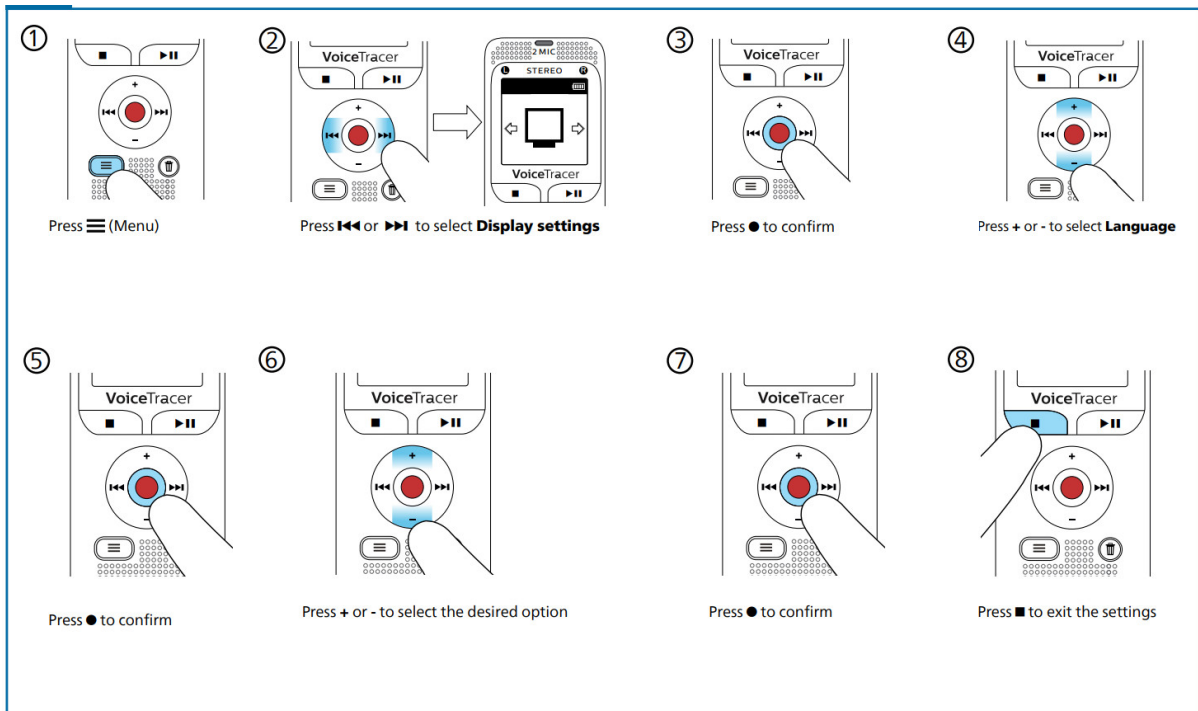
Power on/off



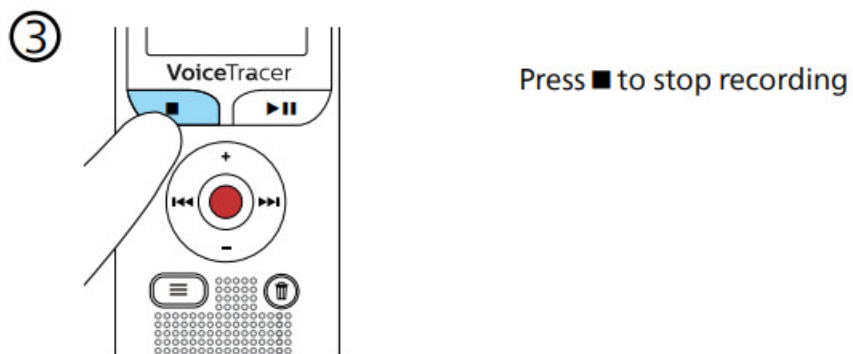
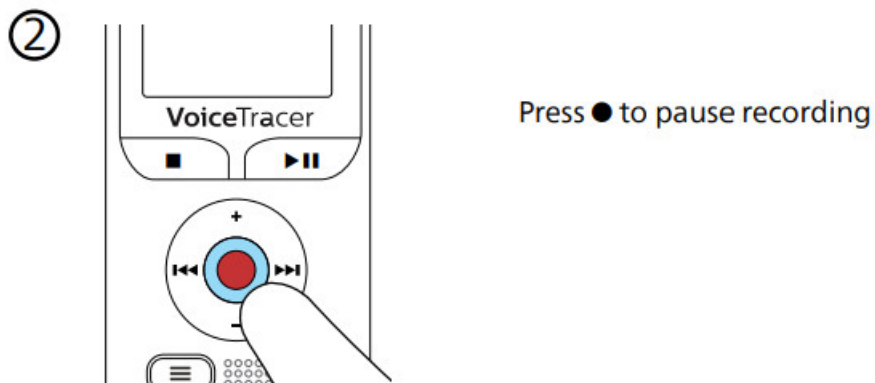
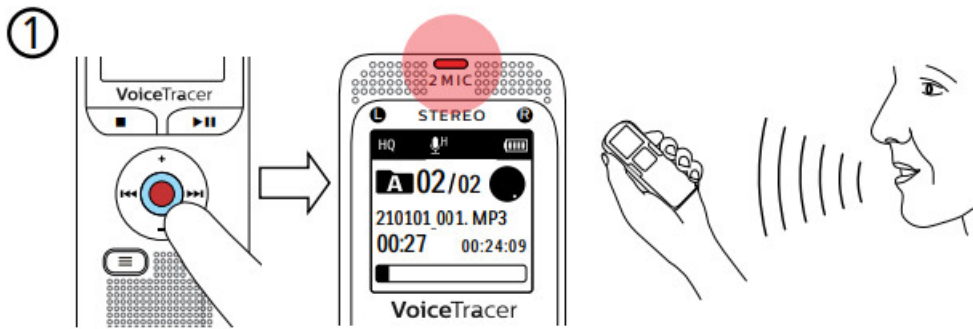
Slide the on/off switch on the side of the device down for two seconds



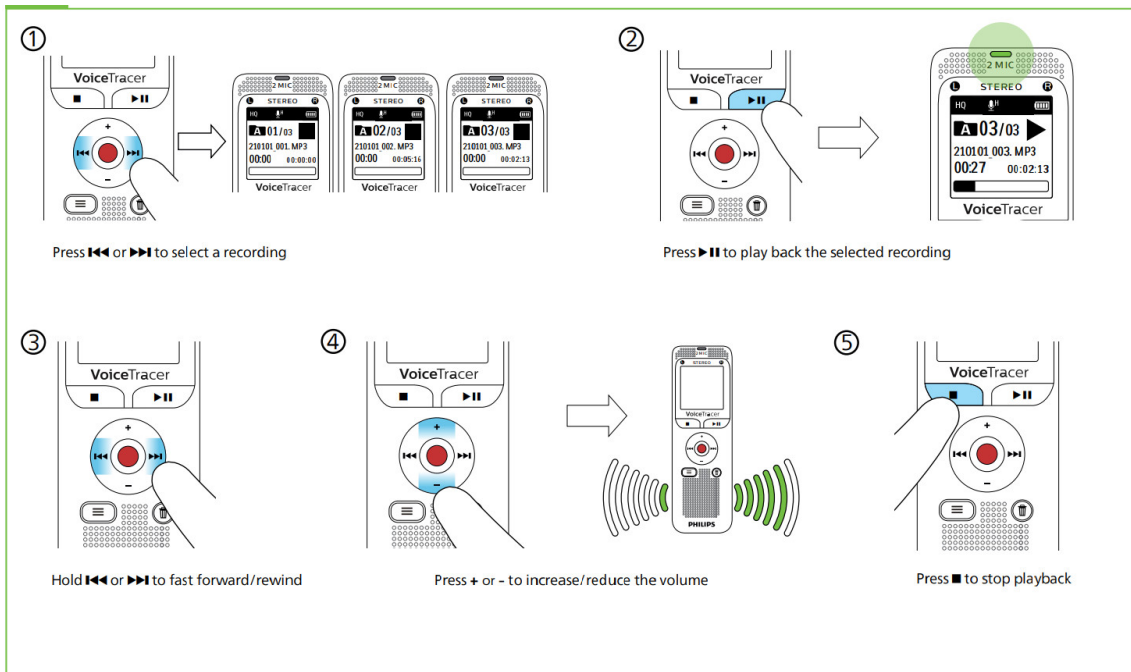
Set the device language



Record



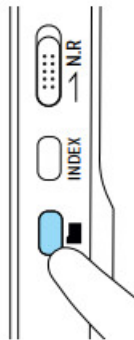
Playback



Change folder

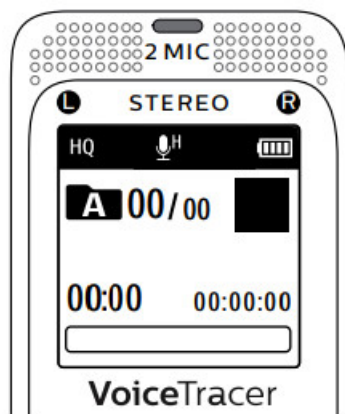
You can choose between four different folders to store your recordings

①



Press **FOLDER** to select the desired folder

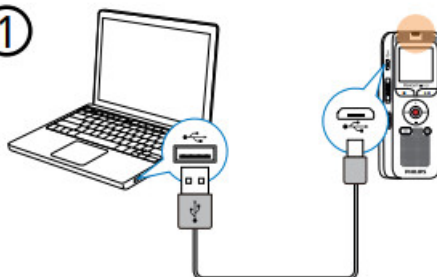
②



You can choose between **A**, **B**, **C**, or **D**

The **F** folder is only for music (requires a PC)

①



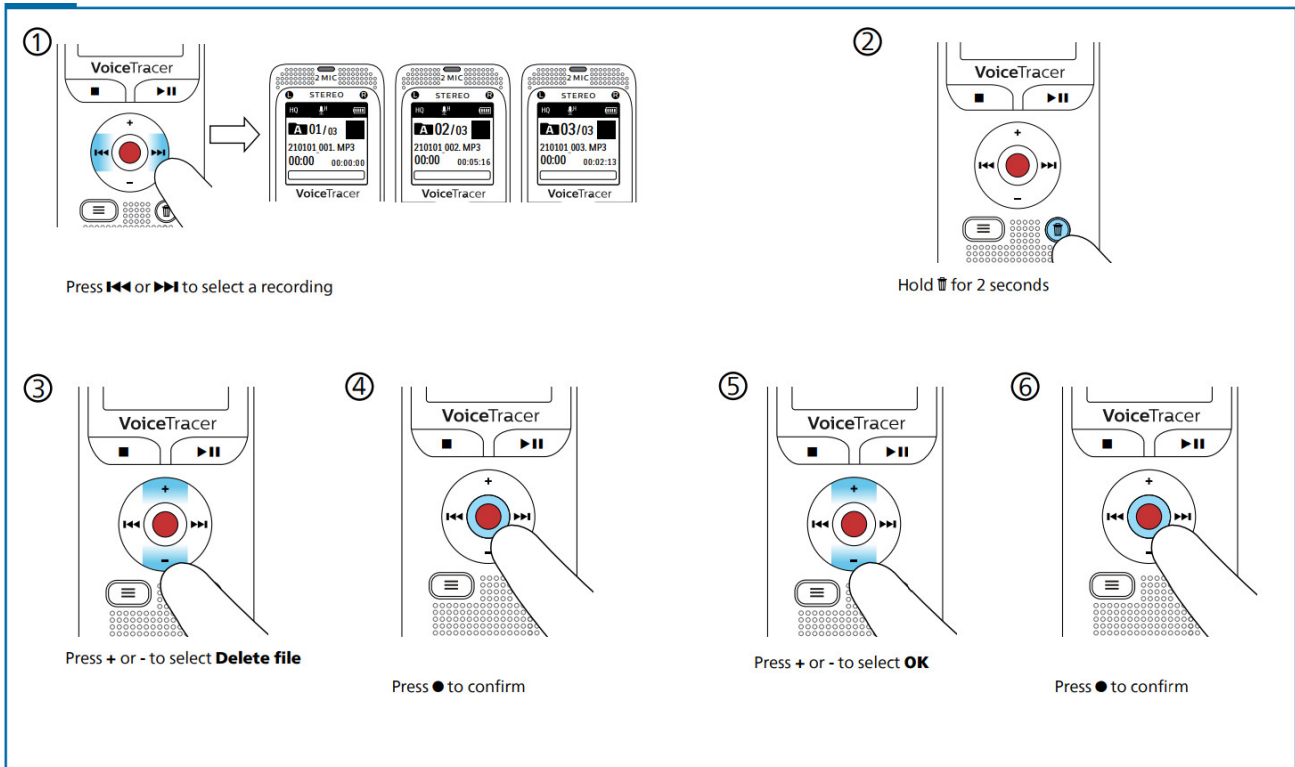
②



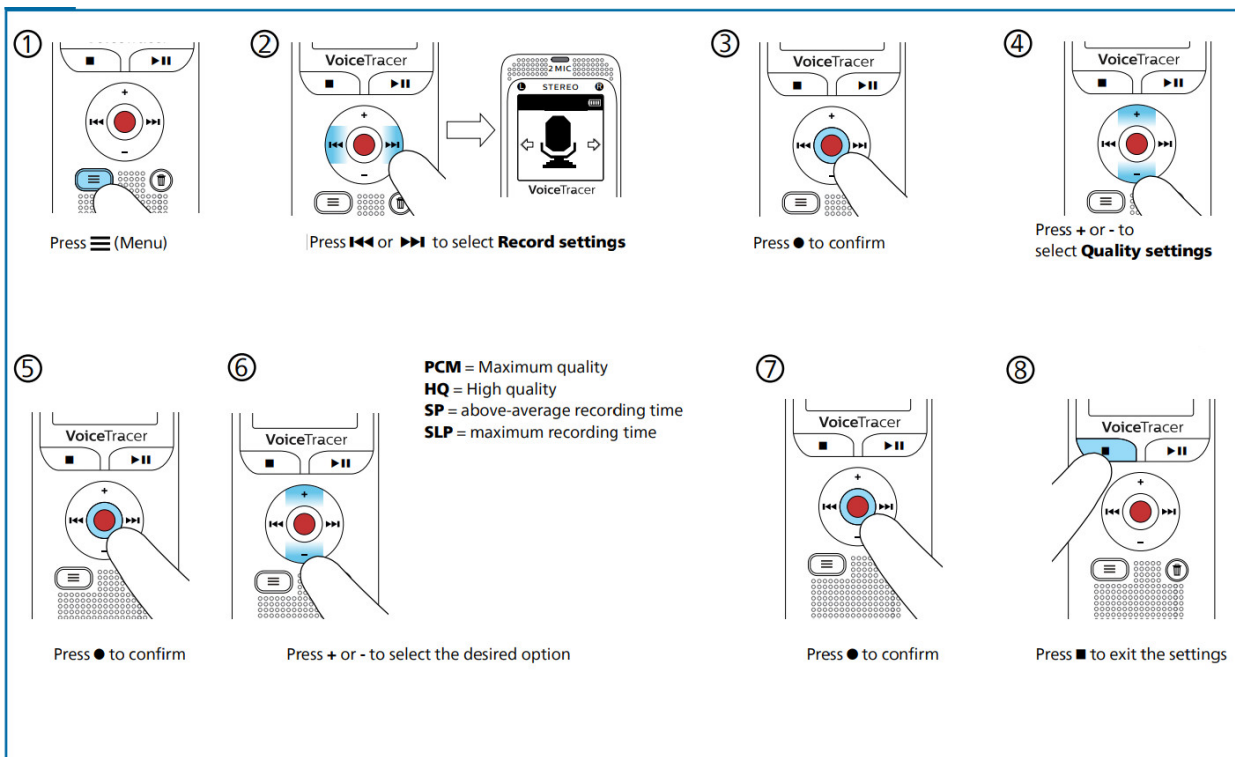
A detailed user manual can be found on the internal memory of the device.



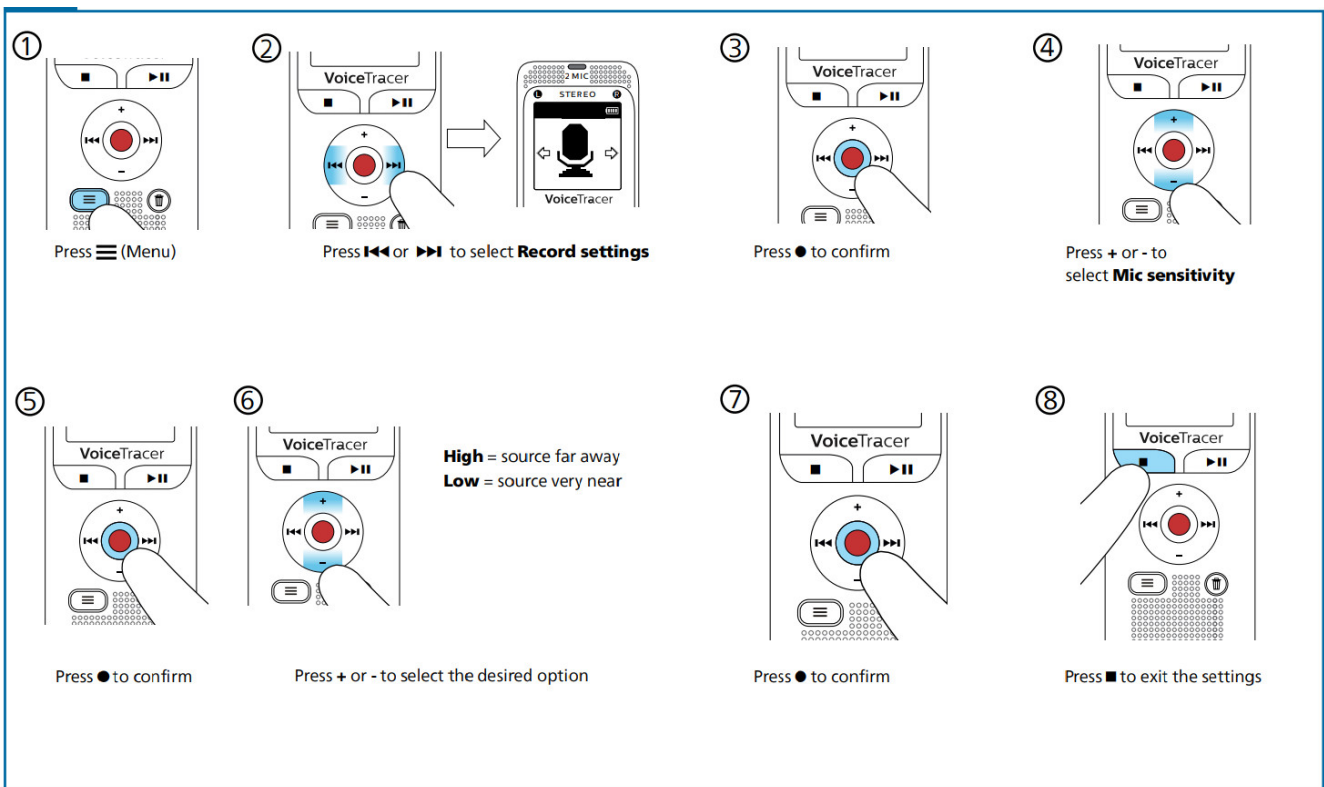
Delete recordings



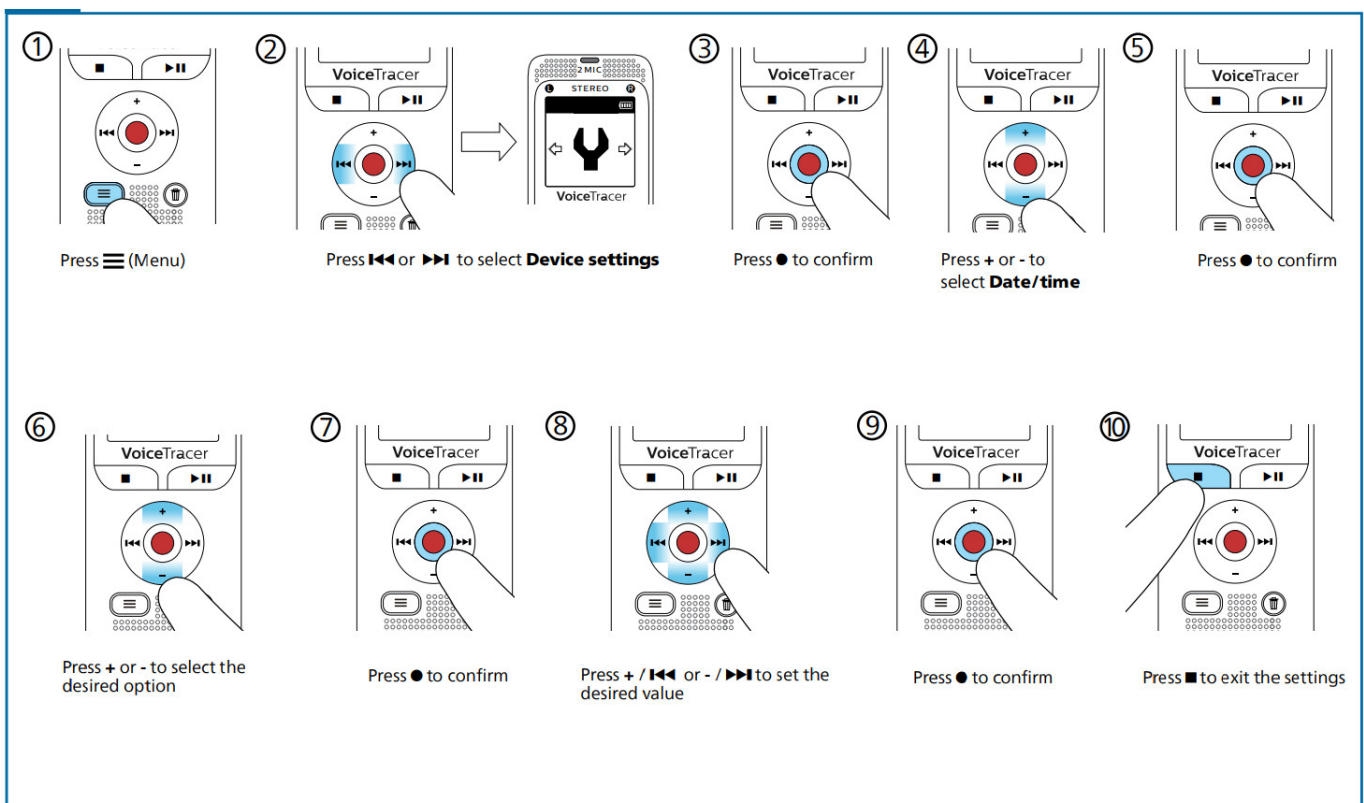
Change recording quality



Change microphone sensitivity



Set the date and time




© Speech Processing Solutions GmbH. All rights reserved.


Specifications are subject to change without notice.

Philips and the Philips shield emblem are registered trademarks of Koninklijke Philips N.V. and are used under license.

Documents / Resources

	PHILIPS DVT2010 VoiceTracer Audio Recorder [pdf] User Guide DVT2010, DVT2015, DVT2010 VoiceTracer Audio Recorder, VoiceTracer Audio Recorder, Audio Recorder, Recorder
---	---

References

-  [Audio & video recorders | Philips](#)
- [User Manual](#)