



PHILIPS DUS804CS-UP Multifunction Sensor Instruction Manual

[Home](#) » [Philips](#) » PHILIPS DUS804CS-UP Multifunction Sensor Instruction Manual 

Contents

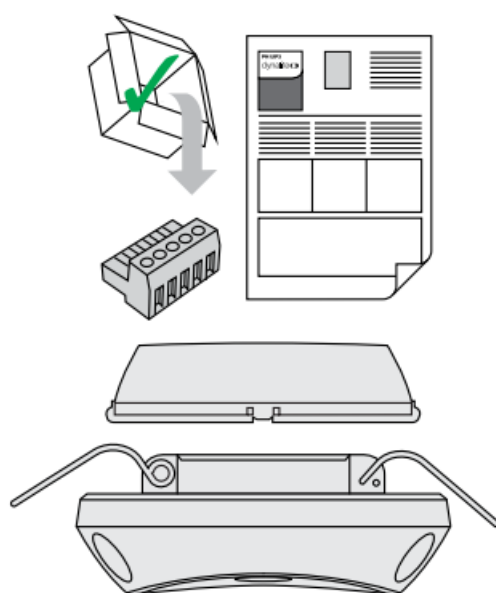
- [1 PHILIPS DUS804CS-UP Multifunction Sensor](#)
- [2 WHAT'S IN THE BOX](#)
- [3 TOOLS REQUIRED](#)
- [4 DIMENSIONS](#)
- [5 FEATURED](#)
- [6 Installation Instructions](#)
- [7 WIRING](#)
- [8 Documents / Resources](#)
 - [8.1 References](#)
- [9 Related Posts](#)

PHILIPS

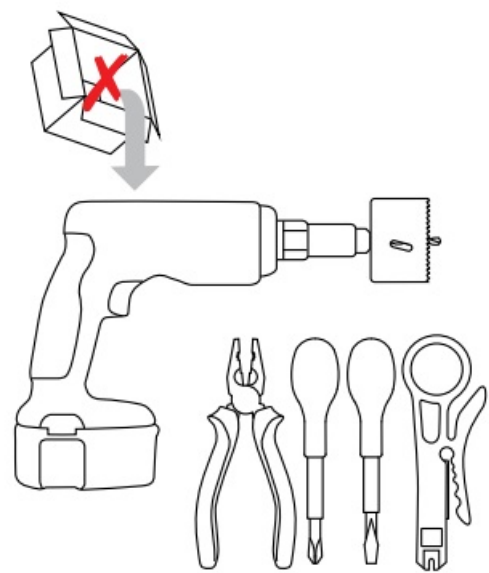
PHILIPS DUS804CS-UP Multifunction Sensor



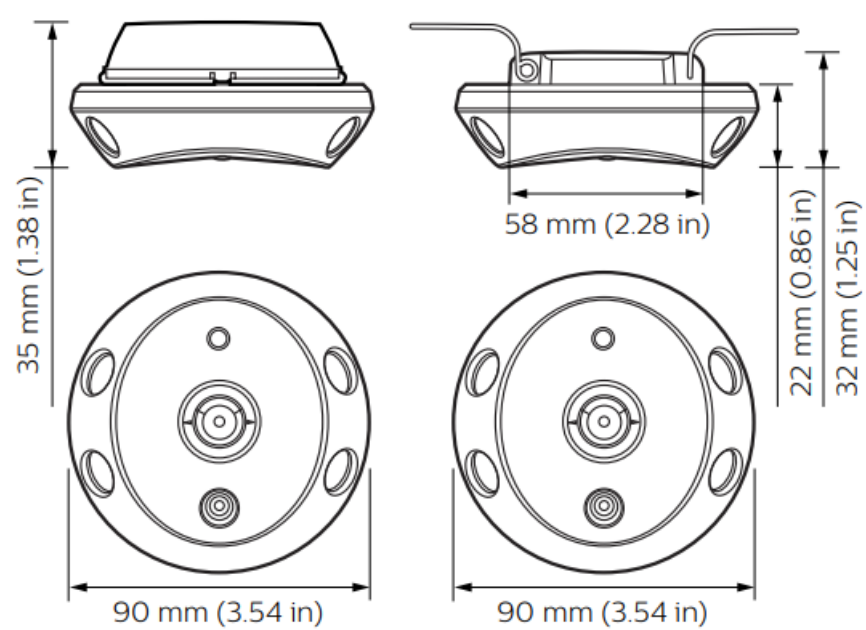
WHAT'S IN THE BOX



TOOLS REQUIRED



DIMENSIONS

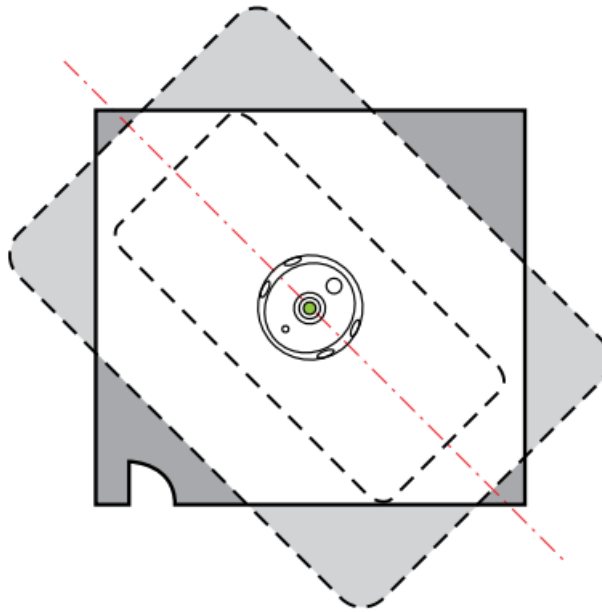


FEATURED

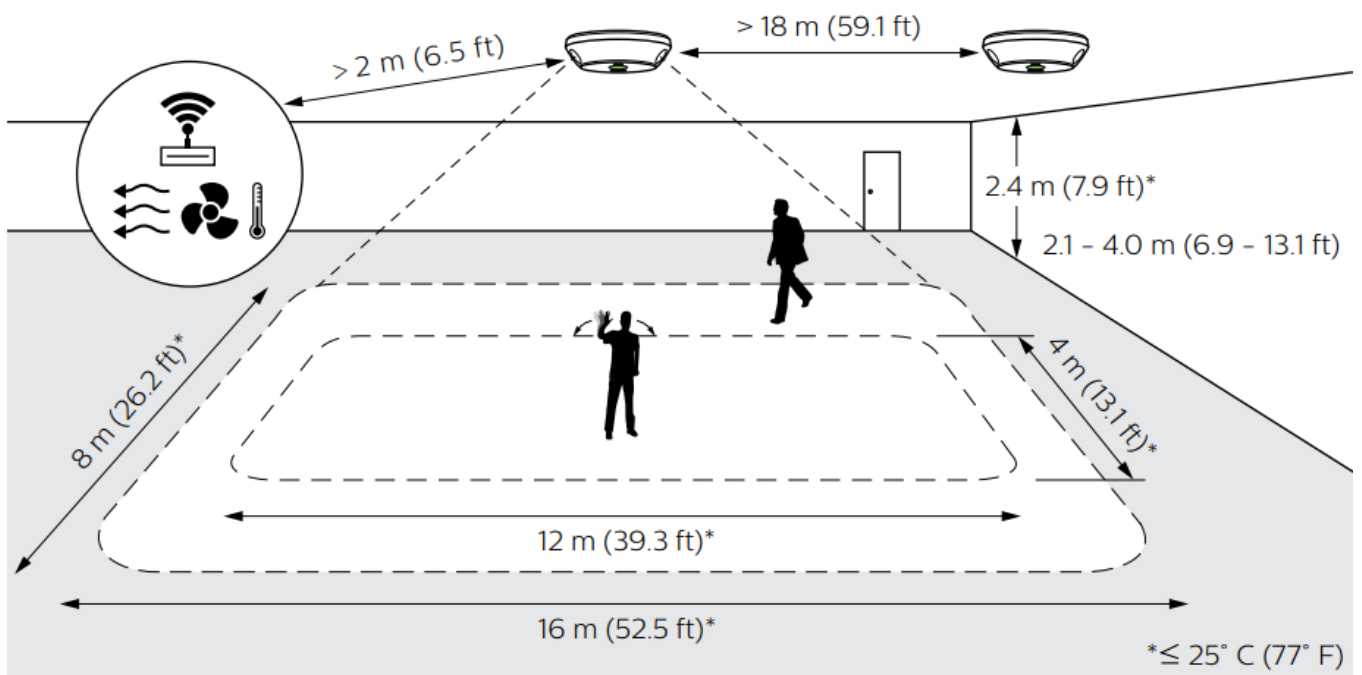


Installation Instructions

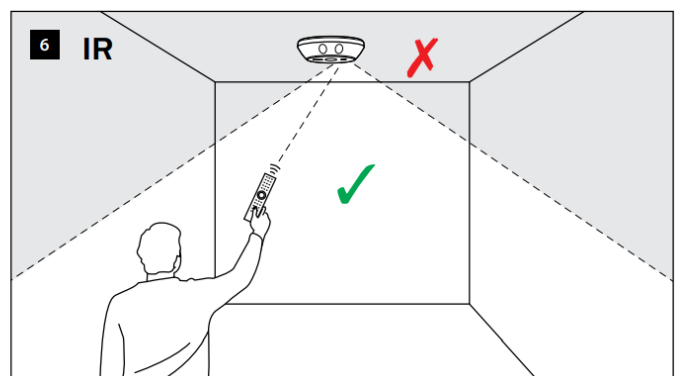
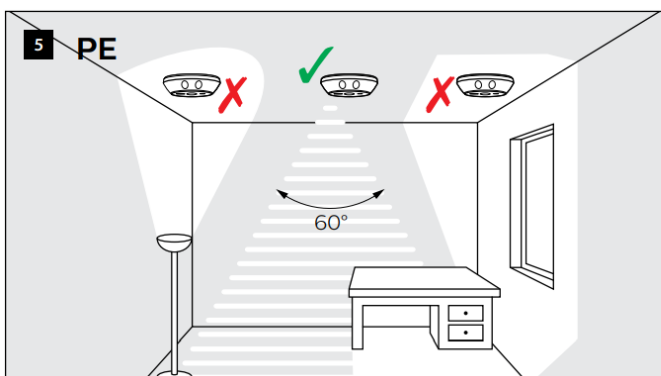
ULTRASONIC



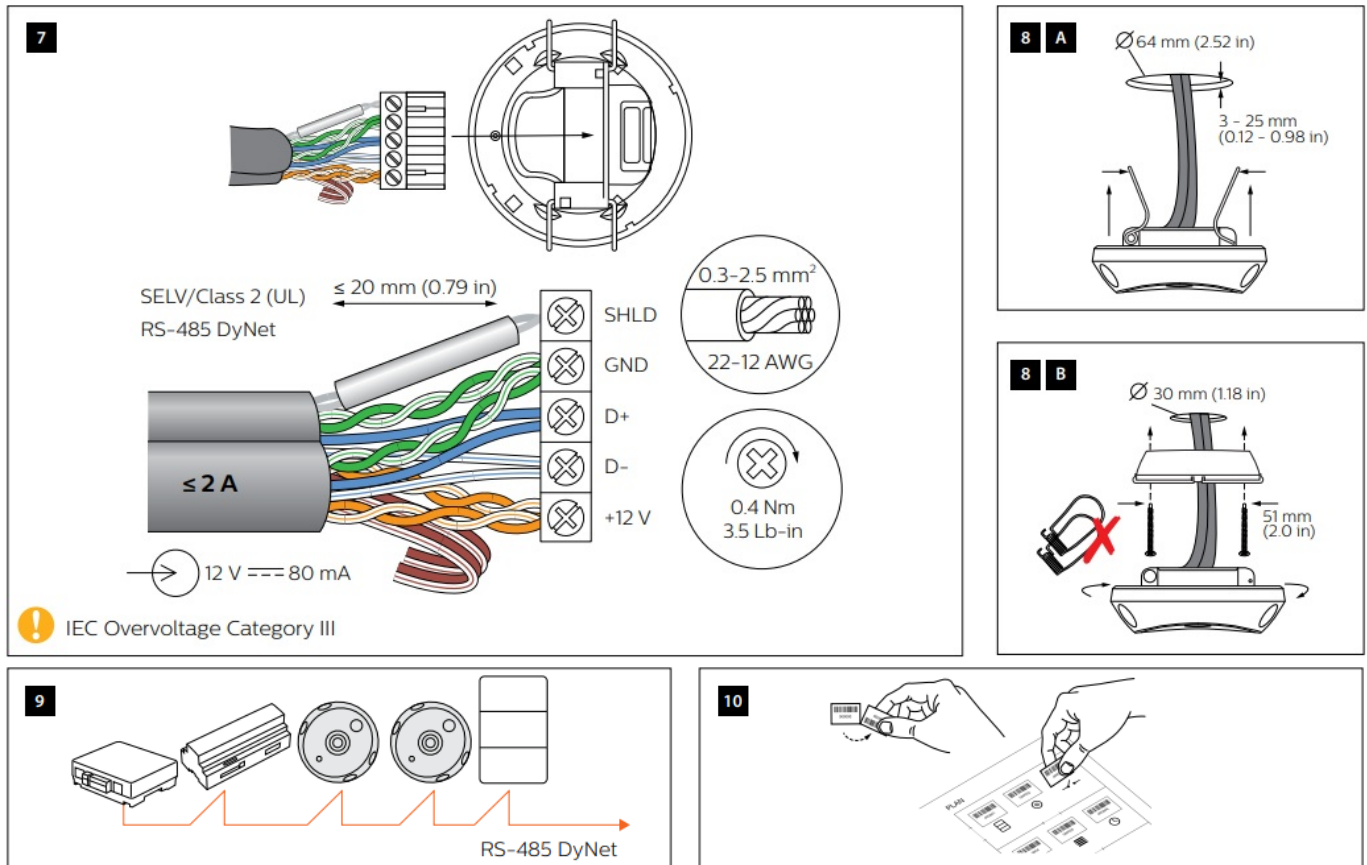
! IEC Pollution Degree II



WARNING



WIRING



Devices must be installed by a qualified electrician in accordance with all national and local electrical and construction codes and regulations.

WARNING

- Do not connect inputs to mains.
- Refer to Service Guide for full cleaning recom

Installation of a home and building automation and control system shall comply with IEC 60364 (all parts). The temperature limits and current-carrying capacities for the communication wires specified in IEC 60364-5-52 shall not be exceeded.

© 2022 Signify Holding. All rights reserved. Specifications are subject to change without notice. No representation or warranty as to the accuracy or completeness of the information included herein is given and any liability for any action in reliance thereon is disclaimed. Philips and the Philips Shield Emblem are registered trademarks of Koninklijke Philips N.V. All other trademarks are owned by Signify Holding or their respective owners.

www.dynalite.com

Documents / Resources



[PHILIPS DUS804CS-UP Multifunction Sensor](#) [pdf] Instruction Manual
DUS804CS-UP, Multifunction Sensor, DUS804CS-UP Multifunction Sensor, Sensor

References

-  [Philips Dynalite - Lighting Controls, Lighting Management](#)