



# PHILIPS DMRC210 Dynalite Relay Controller Instruction Manual

[Home](#) » [Philips](#) » PHILIPS DMRC210 Dynalite Relay Controller Instruction Manual 

## Contents

- [1 PHILIPS DMRC210 Dynalite Relay Controller](#)
- [2 Installation Instructions](#)
- [3 What's In The Box](#)
- [4 Instructions](#)
- [5 Documents / Resources](#)
  - [5.1 References](#)
- [6 Related Posts](#)

# PHILIPS

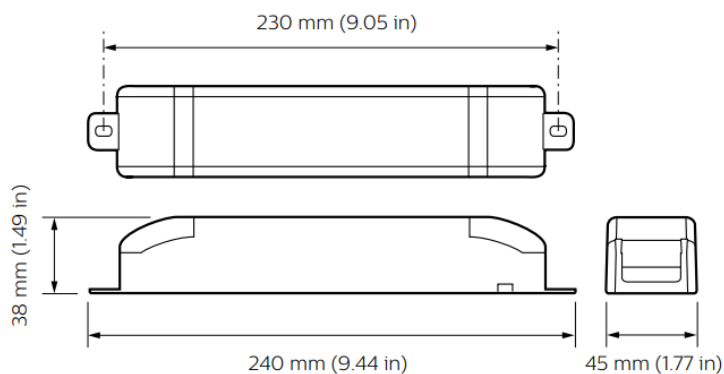
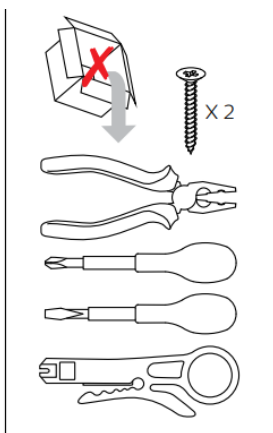
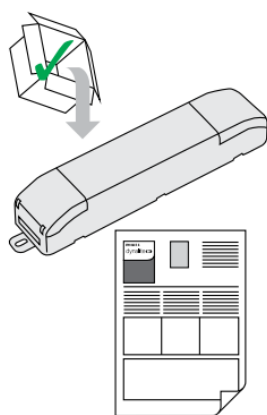
**PHILIPS DMRC210 Dynalite Relay Controller**



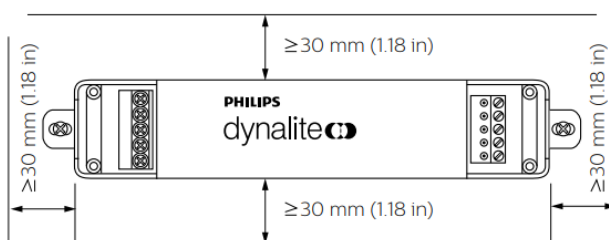
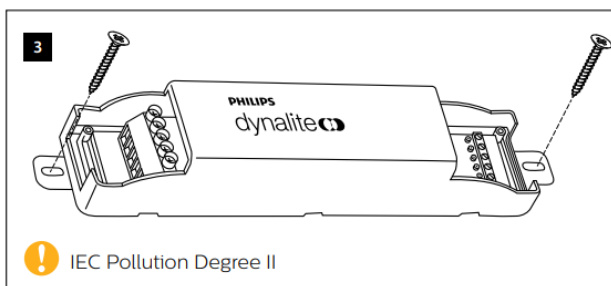
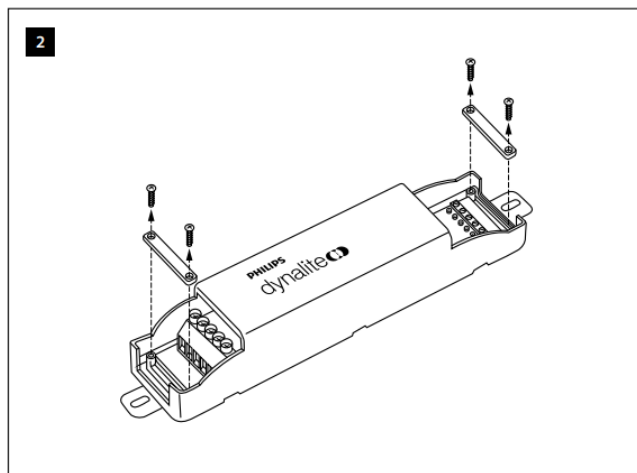
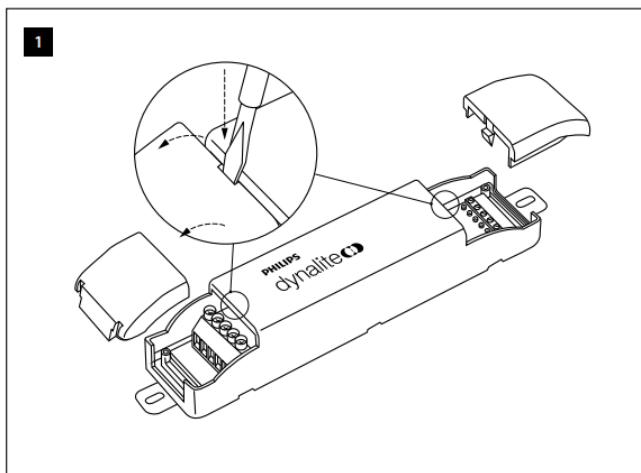
## Installation Instructions

Devices must be installed by a qualified electrician in accordance with all national and local electrical and construction codes and regulations.

## What's In The Box



## Instructions



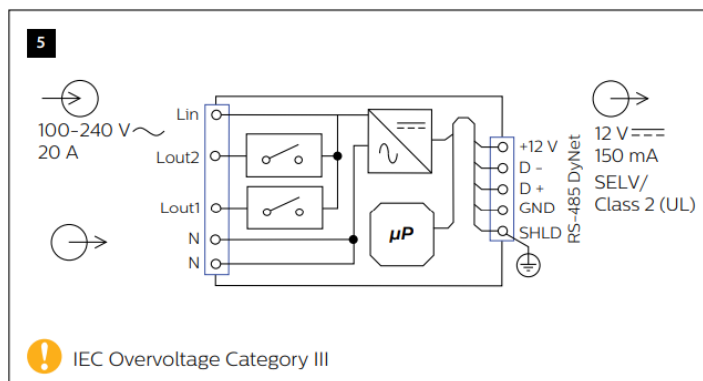
**4**

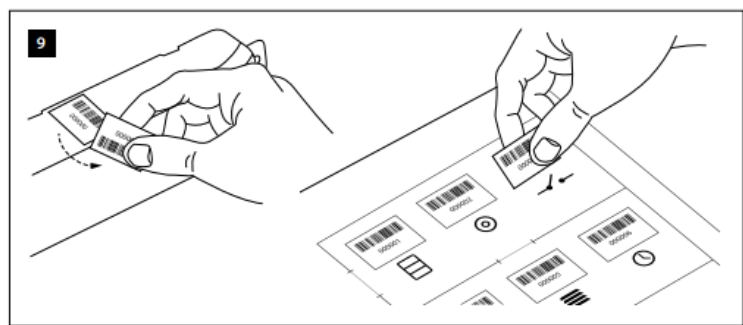
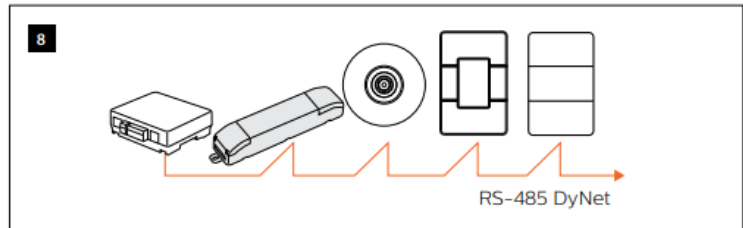
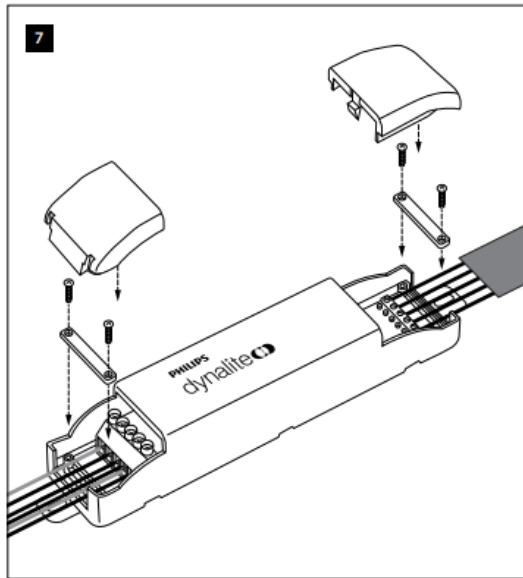
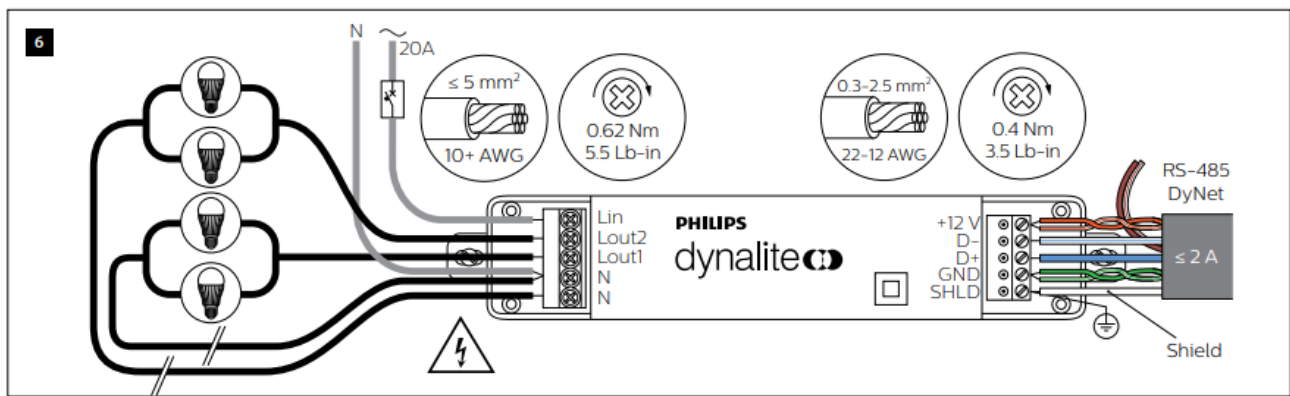
**Output Ratings/Channel (CH)**

Load Type	CH1-CH2
General Use	10 A, 240 V ~
Incandescent	5 A, 240 V ~
Electronic Ballast	3 A, 240 V ~
Inrush Current	165 A

**Output Ratings/Group**

DMRC210 ≤ 20 A





© 2021 Signify Holding. All rights reserved. Specifications are subject to change without notice. No representation or warranty as to the accuracy or completeness of the information included herein is given and any liability for any action in reliance thereon is disclaimed. Philips and the Philips Shield Emblem are registered trademarks of Koninklijke Philips N.V. All other trademarks are owned by Signify Holding or their respective owners.

[www.lighting.philips.com/dynalite](http://www.lighting.philips.com/dynalite)

## Documents / Resources

	<p><a href="#">PHILIPS DMRC210 Dynalite Relay Controller</a> [pdf] Instruction Manual DMRC210, Dynalite Relay Controller, DMRC210 Dynalite Relay Controller</p>
--	---

## References

- [Dynalite | Philips lighting](#)