



## PHILIPS DDTC001 Network Timeclock Installation Guide

[Home](#) » [Philips](#) » PHILIPS DDTC001 Network Timeclock Installation Guide 

### PHILIPS DDTC001 Network Timeclock Installation Guide

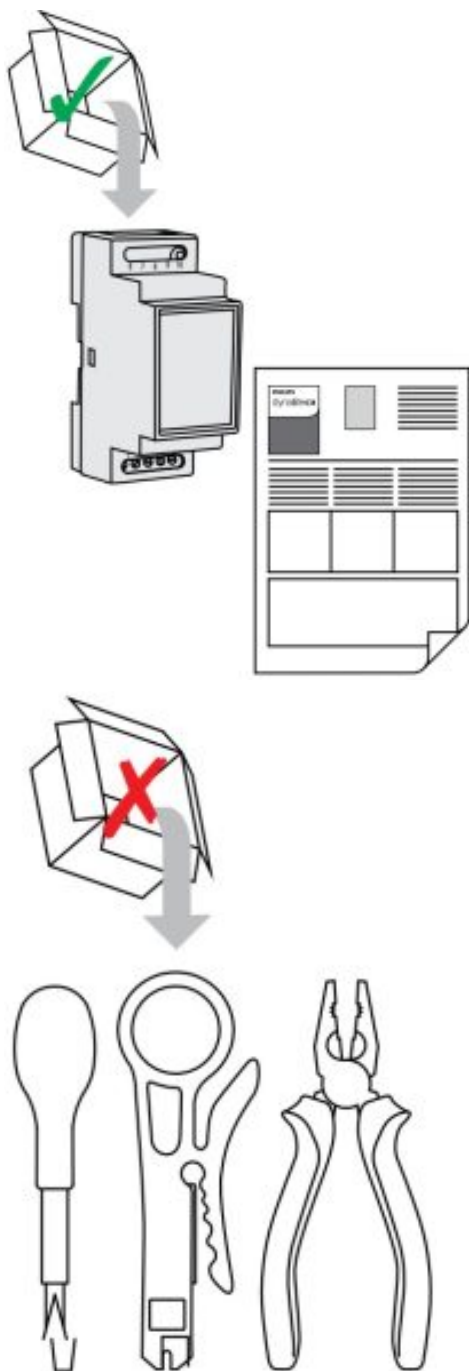


Devices must be installed by a qualified electrician in accordance with all national and local electrical and construction codes and regulations.

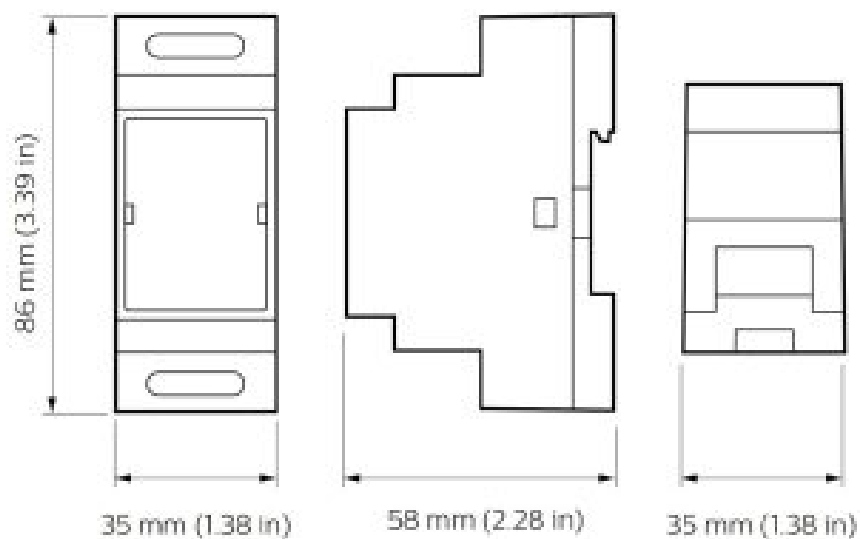
## Contents

- [1 Warning](#)
- [2 Product Dimension](#)
- [3 Installation Instructions](#)
- [4 Documents / Resources](#)
- [5 Related Posts](#)

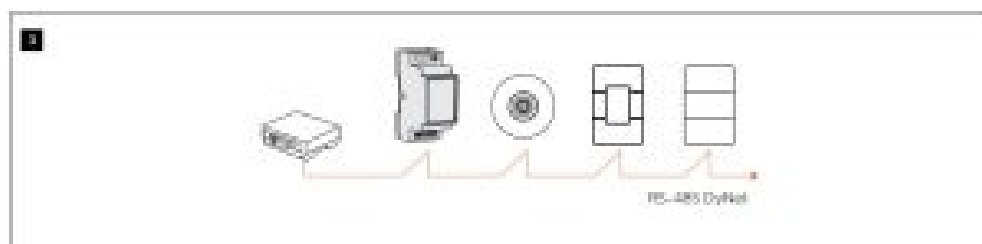
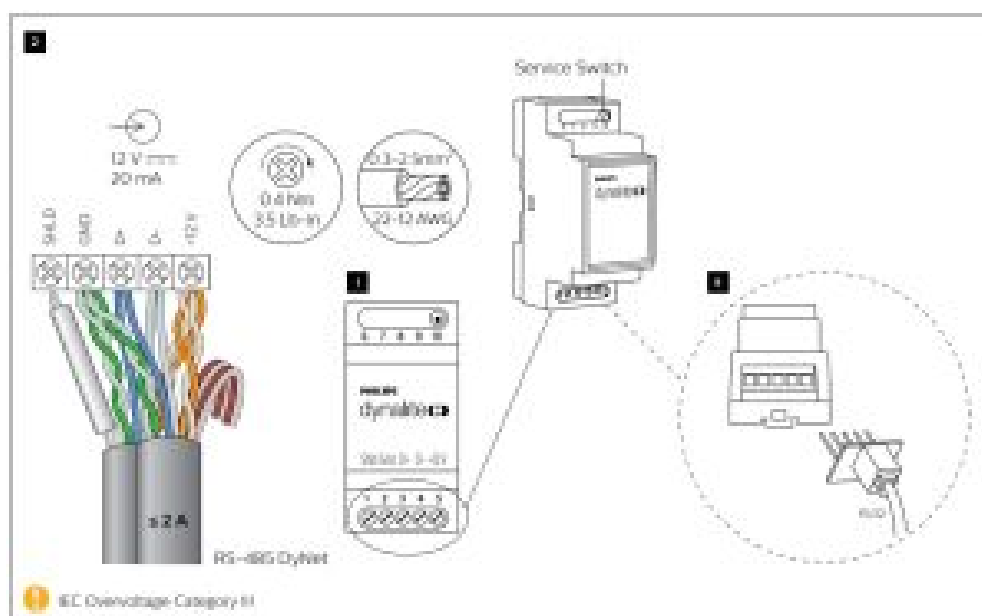
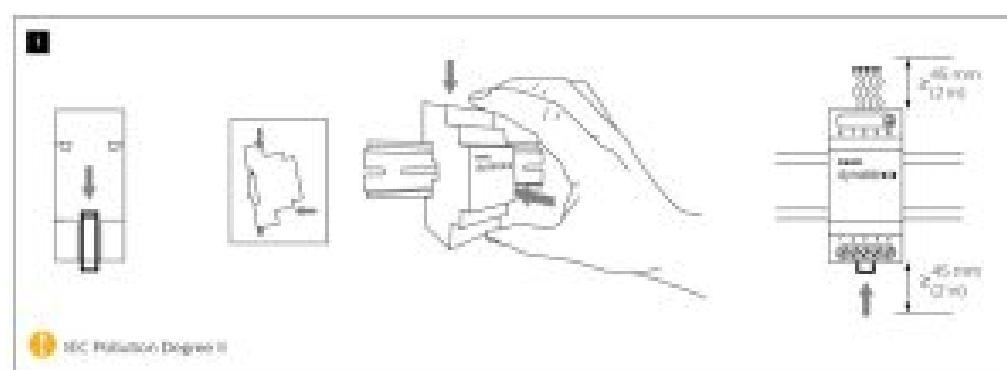
## Warning

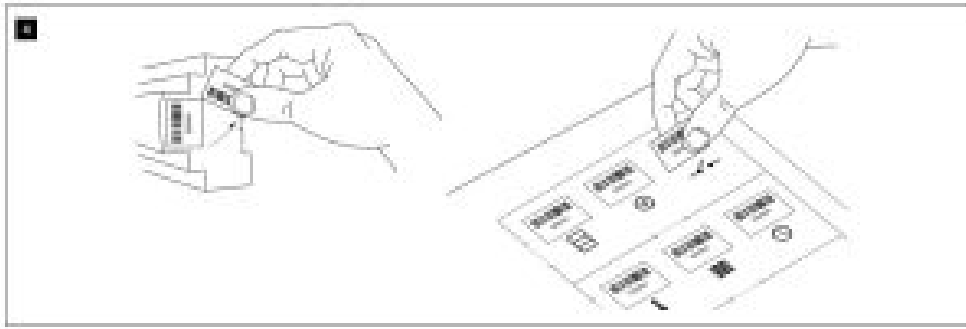


## Product Dimension



## Installation Instructions





© 2021 Signify Holding. All rights reserved. Specifications are subject to change without notice. No representation or warranty as to the accuracy or completeness of the information included herein is given and any liability for any action in reliance thereon is disclaimed. Philips and the Philips Shield Emblem are registered trademarks of Koninklijke Philips N.V. All other trademarks are owned by Signify Holding or their respective owners.

<http://www.lighting.philips.com/dynalite>



## Documents / Resources

	<p><b><a href="#">PHILIPS DDTC001 Network Timeclock</a></b> [pdf] Installation Guide DDTC001, Network Timeclock</p>
--	---