

PHILIPS BS8B27B Client Mounting Bracket User Guide

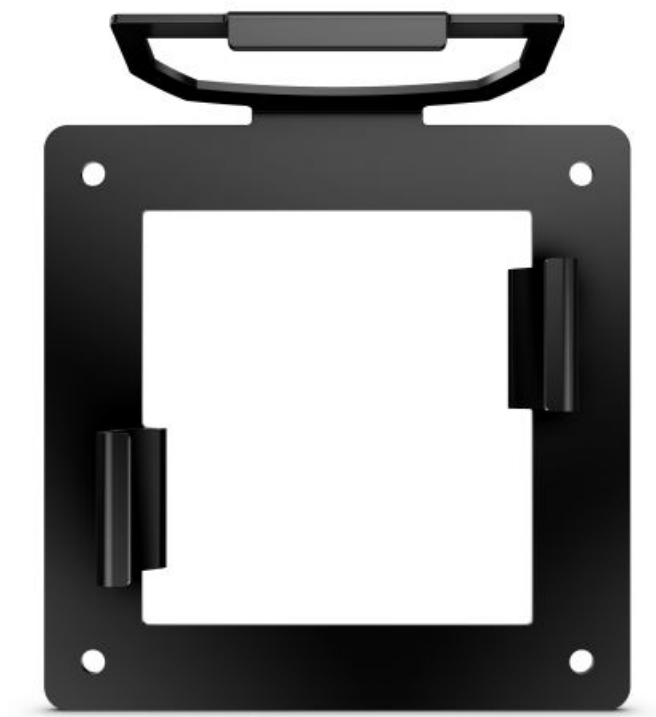
[Home](#) » [Philips](#) » PHILIPS BS8B27B Client Mounting Bracket User Guide 

Contents

- [1 PHILIPS BS8B27B Client Mounting Bracket](#)
- [2 WHAT'S IN THE BOX](#)
- [3 INSTALLATION](#)
- [4 Documents / Resources](#)
 - [4.1 References](#)
- [5 Related Posts](#)

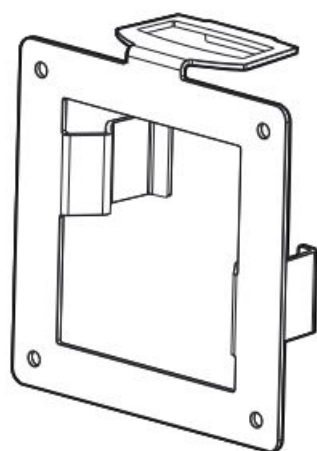
PHILIPS

PHILIPS BS8B27B Client Mounting Bracket



Register your product and get support at www.philips.com/welcome

WHAT'S IN THE BOX



X 1



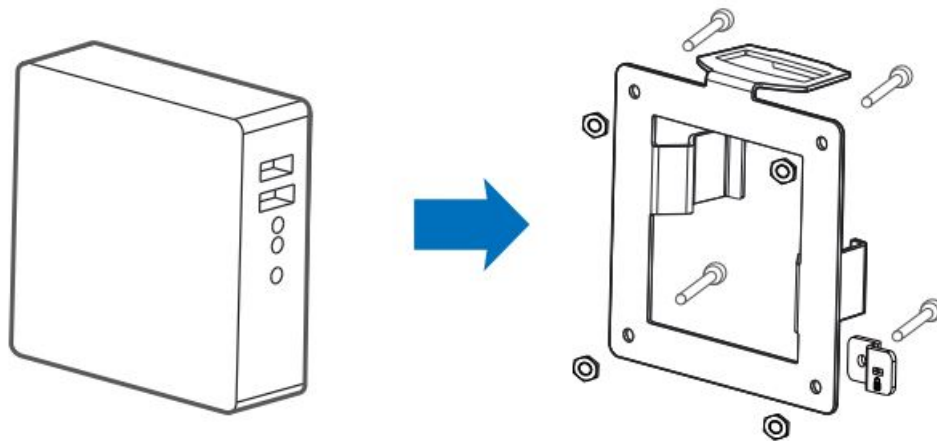
X 4



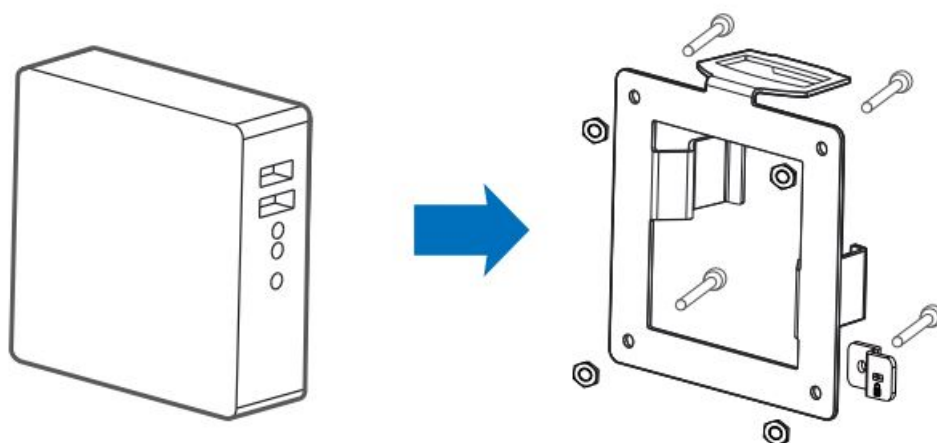
X 4

INSTALLATION

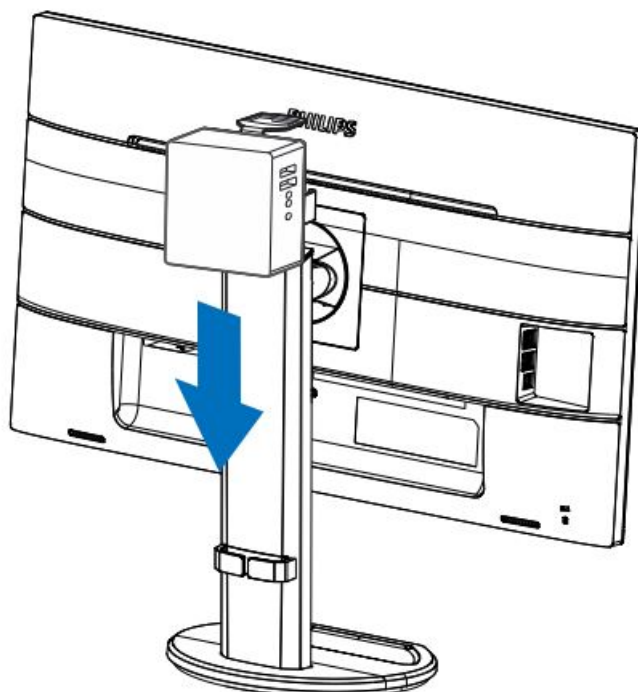
1. Align holes of VESA compliant device with those of bracket and screw up with the screws provided.



2. Kensington Lock



3. Slide down the bracket with the mounted device into the Philips Height Adjustment base.



Documents / Resources



[PHILIPS BS8B27B Client Mounting Bracket](#) [pdf] User Guide

BS8B27B, Client Mounting Bracket, BS8B27B Client Mounting Bracket, Mounting Bracket, Bracket

References

- [Product registration | Philips](#)