



## PHILIPS Bread Maker User Manual

[Home](#) » [Philips](#) » PHILIPS Bread Maker User Manual 

# PHILIPS

HD2650  
HD2651

User manual



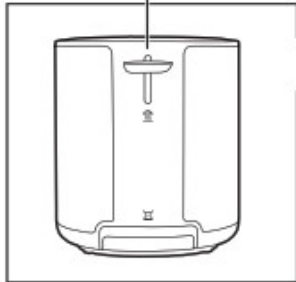
1



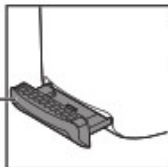
①



②



③



④



⑤



⑥



⑧

1

2

3

4

5

6

7

8

9

10

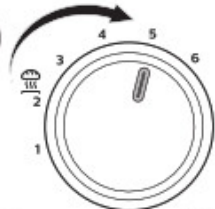
2



①



②



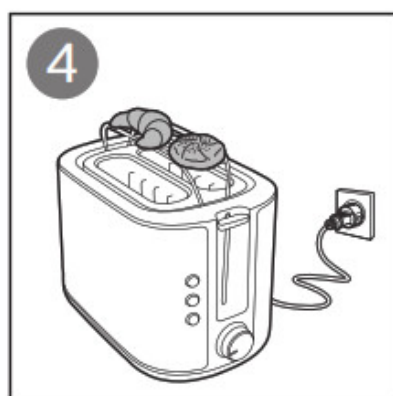
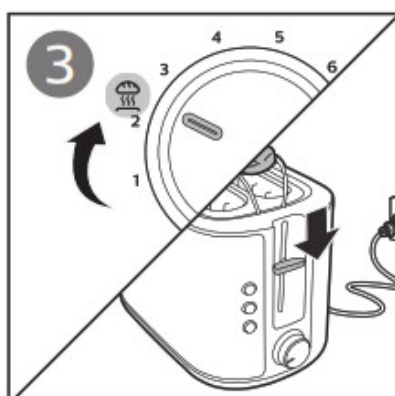
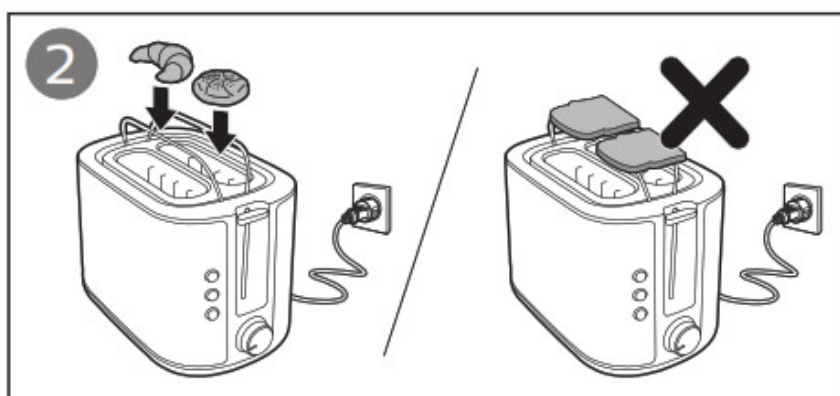
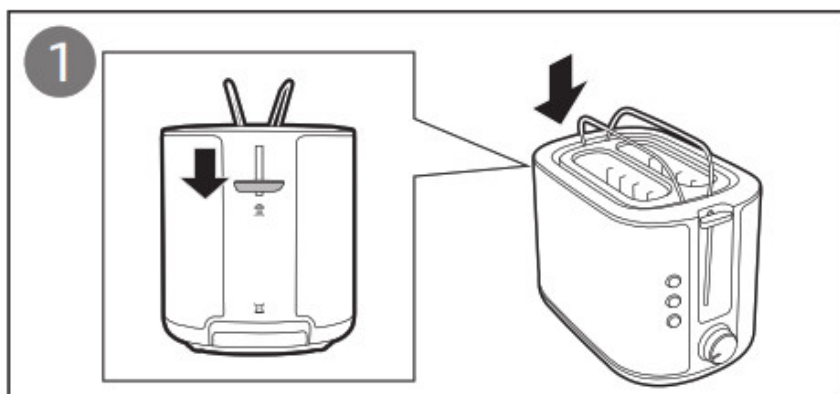
③



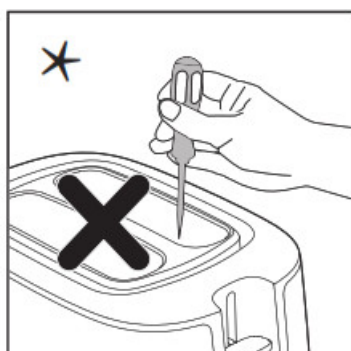
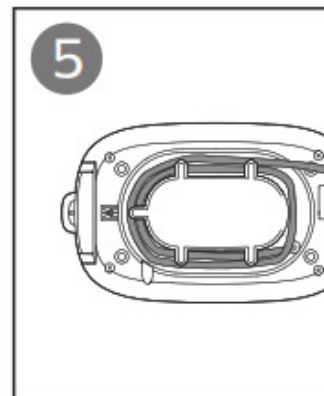
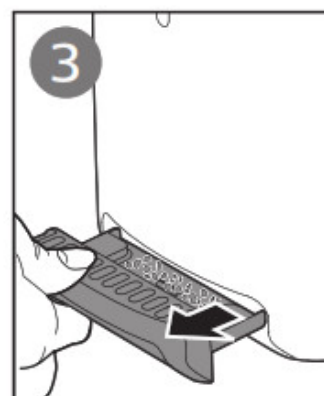
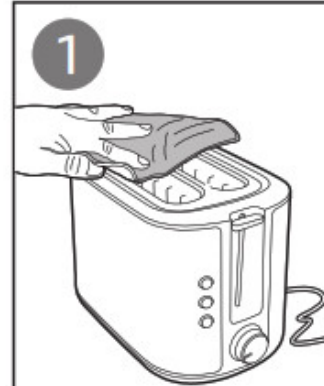
④



3



4



\* Do not use any tool to clean the slot.

1. Dust cover (HD2651 only) 2. Warming rack lever 3. Crumb tray 4. Reheating setting button 5. Defrosting setting button	6. Stop button 7. Browning control 8. Bun warming setting 9. Toasting lever 10. Warming rack
--	--

## Contents

### 1 Important

### 2 Guarantee & service

### 3 Documents / Resources

#### 3.1 References

### 4 Related Posts

## Important

Read this important information leaflet carefully before you use the appliance and save it for future reference.

### Danger

- Never immerse the appliance in water.
- Do not insert oversize foods and metal foil packages into the toaster, as this may cause fire or electric shock.

### Warning

- If the power cord is damaged, you must have it replaced by Philips, a service center authorized by Philips or similarly qualified persons in order to avoid a hazard.
- This appliance can be used by children aged from 8 years and above and persons with reduced physical, sensory or mental capabilities or lack of experience and knowledge if they have been given supervision or instruction concerning the use of the appliance in a safe way and understand the hazards involved. Children shall not play with the appliance. Cleaning and user maintenance shall not be made by children unless they are older than 8 and supervised.
- Keep the appliance and its cord out of reach of children less than 8 years.
- To avoid the risk of fire, frequently remove crumbs from the crumb tray (see User Manual Chapter "Cleaning").
- Do not operate the appliance under or near curtains or other flammable materials or under wall cabinets, as this may cause a fire.
- Check if the voltage indicated on the bottom of the appliance corresponds to the local power voltage before you connect the appliance.
- Do not let the appliance operate unattended.
- Do not place the dust cover (HD2651 only) or any other object on top of the toaster when the appliance is switched on or when it is still hot, as this can cause damage or fire.
- Immediately unplug the toaster if fire or smoke is observed.
- This appliance is only intended for toasting bread. Do not put any other ingredients in the appliance.
- The appliance is not intended to be operated by means of an external timer or a separate remote control system.
- Do not wind the power cord around the toaster after use or during storage as this may damage the cord.

### Caution

- The toaster is intended for household use only and may only be used indoors. It is not intended for commercial or industrial use.
- Only connect the appliance to an earthed wall socket.
- Do not let the power cord hang over the edge of the table or worktop on which the appliance stands.
- Always unplug the appliance after use.
- The warming rack is only intended for warming up rolls or croissants. Do not put any other ingredients on the warming rack, as this may lead to a hazardous situation.
- Do not hold the appliance upside down and do not shake it to remove the crumbs.

### Electromagnetic fields (EMF)

This Philips appliance complies with all standards regarding electromagnetic fields (EMF). If handled properly and according to the instructions in this user manual, the appliance is safe to use based on scientific evidence available today.



This symbol on a product means that the product is covered by European Directive 2012/19/EU. Inform yourself about the local separate collection system for electrical and electronic products. Follow local rules and never dispose of the product with normal household waste. Correct disposal of old products helps prevent negative consequences for the environment and human health.

### Guarantee & service

If you need service or information or if you have a problem, please visit the Philips website at [www.philips.com](http://www.philips.com) or contact the Philips Consumer Care Centre in your country (you can find its phone number in the worldwide guarantee leaflet). If there is no Consumer Care Centre in your country, go to your local Philips dealer.

#### Before first use

Put the toaster in a properly ventilated room and select the highest browning setting. Let the toaster complete a few toasting cycles without bread in it. This burns off any dust and prevents unpleasant smells.

Toast, reheat or defrost bread (fig.2)


#### Note:


- Do not operate the appliance without the crumb tray.
- Never force bread into toasting slots.

Never toast bread slices that have been buttered. Take extra care when toasting bread that contains sugar, preserves, raisins, or fruit bits, due to the risk of overheating. Do not use bent, damaged or broken bread slices in your toaster as it may get jammed into the slot or stuck in the toasting chamber.

To toast bread, follow steps 1, 2, 3, 4.

- Select a low setting (1-2) for lightly toasted bread.
- Select a high setting (6-8) for darkly toasted bread.

To reheat bread, press the reheating setting button (  ).

To defrost bread, press the defrosting setting button (  ).

#### Note:

- You can stop the toasting process and pop up the bread at any time by pressing the stop button (STOP) on the toaster.

Tip:


- You may use different browning settings when toasting different types of bread:
- For dry, thin or stale bread, select a lower setting. This type of bread has less moisture and it will go brown quicker than moist, thick or fresh bread.

- For fruit bread like raisin bread, select a lower setting
- For higher sugar content bread, select a lower setting.
- For heavier textured bread like rye bread or whole wheat bread, select a higher setting. When you toast one slice of bread, the browning of toast may be slightly varied from one side to the other.

For the bread that may have loose food bits, for example, raisin bread and whole wheat bread, remove the loose bits before putting bread slices into the slot. This can avoid potential flame/smoke resulting from loose food bits dropping/ sticking in the toaster chamber.

### **Bun warming (fig.3)**

To warm buns, follow the steps below:

1. Push down the warming rack lever to unfold the warming rack.
2. Turn the browning control to the bun warming setting (  ).

### **Note:**

- Do not place bread on bun warming rack to avoid damage to toaster.
- Never put the rolls to be warmed up directly on top of the toaster. Always use the warming rack to avoid damage to the toaster. Cleaning (fig.4)

### **Warning:**

- Never use scouring pads, abrasive cleaning agents, or aggressive liquids to clean the appliance.
- Lightly tap the toaster housing to dislodge any bread crumbs in the toaster chamber.
- Allow the toaster to cool down for 30 minutes after use before cleaning the toaster.



RU: Тостер  
 KK: Тостер  
 HD2650  
 220-240V~ 50-60Hz 950W



©2019 Koninklijke Philips N.V.  
 All rights reserved.  
 3000 037 00291



**[PHILIPS Bread Maker](#)** [pdf] User Manual  
Bread Maker, HD2650, HD2651

## References

-  [Philips - United States | Philips](#)
-  [Philips - United States | Philips](#)

Manuals+.