



PHILIPS ACM067 Fresh Air Mask User Guide

[Home](#) » [Philips](#) » PHILIPS ACM067 Fresh Air Mask User Guide 

PHILIPS ACM067 Fresh Air Mask User Guide

PHILIPS

ACM067

User Manual



Contents

- [1 Intended use](#)
- [2 Important](#)
- [3 Product overview](#)
- [4 How to assemble](#)
- [5 How to wear](#)
- [6 How to remove](#)
- [7 Using the electric fan](#)
- [8 Cleaning and maintenance](#)
- [9 Storage](#)
- [10 Troubleshooting](#)
- [11 Specifications](#)
- [12 Documents / Resources](#)
 - [12.1 References](#)
- [13 Related Posts](#)

Intended use

The ACM067 is a fresh air mask. It can be used to complement existing protective measures and social distancing

rules. The mask is intended to be used by healthy people not presenting any clinical symptoms of viral or bacterial infection and who do not come into direct contact with people displaying such symptoms. This mask is not a respiratory protection mask (PPE in the sense of Regulation EU/2016/425) nor a medical/surgical mask (Medical Device in the sense of Regulation EU/2017/745). It cannot be used by health workers in contact with patients.

Important

Warning

- In order to use this mask correctly, it is important that you follow these instructions.
- If you are ill, this mask is unsuitable. Seek advice from your doctor.
- This mask is not a medical device within the meaning of Directive 93/42/CEE or Regulation EU/2017/745 (surgical masks) nor is it personal protective equipment in the sense of Regulation EU/2016/425 (respiratory protective devices).
- Always check that the mask is correctly fitted and covers your nose, mouth and chin. It is recommended that this mask be worn on bare skin; beards can reduce the filtration efficiency to below the limits set out.
- Masks are not suitable for children under 13 years of age. Children shall not play with the mask.
- Masks are not intended for people with reduced physical, sensory or mental capabilities or lack of experience and knowledge unless they have been given supervision or instruction concerning use of the mask in a safe way and understand the hazards involved.
- A mask which hinders the user's ability to breathe when first put on is deemed unsuitable. It can take time to become comfortable with the mask.
- This mask does not replace protective measures (regular hand-washing, physical separation, reduced contact with other people). It minimizes the projection of user's respiratory droplets saliva into the environment.
- Do not use when participating in vigorous physical activity.
- Stop using this mask at the first signs of damage.
- If the filter is damaged or soiled or if you find it difficult to breathe during use, please discard the filter immediately and replace it with a new one.
- Do not use dry cleaning and fabric softener.
- Clean the mask reusable cover after each use.
- This mask is only used to filter solid particles such as particulate matter (PM 2.5), It's not for industrial usage.
- Do not use the mask to protect against toxic gases and chemical fumes.
- Do not use where there may be a deficiency of oxygen.
- Do not use the mask on damaged skin.
- Avoid wearing the mask on your neck or forehead.
- Avoid touching the part of the mask in contact with your mouth and nose.
- Remove the mask immediately if a skin reaction appears.
- Do not store the mask in environments of extremely high or low temperatures ($>60\text{ }^{\circ}\text{C}$, or $<-20\text{ }^{\circ}\text{C}$), such as inside of a vehicle in direct sunlight. Doing so may result in irreversible damage and render the product unsafe.
- The electric fan has a built-in lithium polymer battery. Improper use or storage can cause electrical or liquid leakage of the battery and even fire, resulting in damage to property and affecting health.
- Please use the original USB cable to charge the electric fan. Adapter/ charger is not included. The electric fan must only be charged with USB 5V adaptor/charger approved by your local authority or government.
- Please consult your doctor in the following cases:
- If you suffer from a respiratory illness or if you are pregnant.

- The electromagnetic fields generated by the magnets and mask can interfere with medical devices (such as cochlear implants).

Caution

- The electric fan operating temperature range (ta) is from -10 °C to 40 °C. The mask will stop working outside of the recommended temperature range.
- The electric fan charging temperature range (tach) is from 10 °C to 35 °C. The fan may charge slowly or fail to charge outside of the recommended temperature range.
- During use, it is normal for condensation to form. This does not affect the use of the mask. After using the mask, allow it to dry in a cool, dry and shaded place.
- Please use the original Philips electric fan, cover and filter together, otherwise, the fit and filtering effect cannot be guaranteed. Do not use the mask cover alone, as it provides no filtering effect.
- Due to the sealed packaging, the filter itself may have a slight odor of the raw materials. This odor is harmless to human health.
- This product is a personal hygiene product. Please do not share it with others.
- Avoid subjecting the electric fan to impact or puncture. Do not rinse the electric fan. Do not immerse the fan in water or other cleaning agents. Doing so may result in damage to the fan or the battery. Even if the fan still works, do not continue to use the product.

Disposing of the rechargeable battery

- Only remove the rechargeable battery when discarding the product.
- Ensure that the product is not connected to the power supply and that the battery has completely discharged.
- Cut the wire connecting the battery to the electric fan and send the part with the battery to a designated recycling center.

Recycling



This symbol means that this product shall not be disposed of with normal household waste (2012/19/EU).
English 7



This symbol means that this product contains a built-in rechargeable battery which shall not be disposed of with normal household waste (2006/66/EC). Please take your product to an official collection point or a Philips service center to have a professional remove the rechargeable battery. Follow your country's rules for the separate collection of electrical and electronic products and rechargeable batteries. Correct disposal helps prevent negative consequences for the environment and human health. The fan module disassembly procedure for recycling center as below:

1. Use an ultrasonic cutter to carefully cut along the gap in the middle of the battery module. The cutting depth of the ultrasonic cutter is recommended to not exceed 2 mm.
2. After cutting, pull out the fan cable to the vertical direction of the PCB. And Use one tweezers to carefully pry off the PCB, and be careful not to pry the lithium battery.
3. Use an electric soldering iron to remove the battery cable from the PCB, and wrap the positive and negative poles of the battery cable with insulating tape to prevent short circuiting of the positive and negative poles.
4. Use a hot air blower to heat the PCB, pay attention to the heating temperature not too high, and ensure that the

battery surface temperature does not exceed 60 °C.

5. After heating, use a plastic sheet to carefully pry the battery off. Do not use excessive force to prevent the battery from deforming.

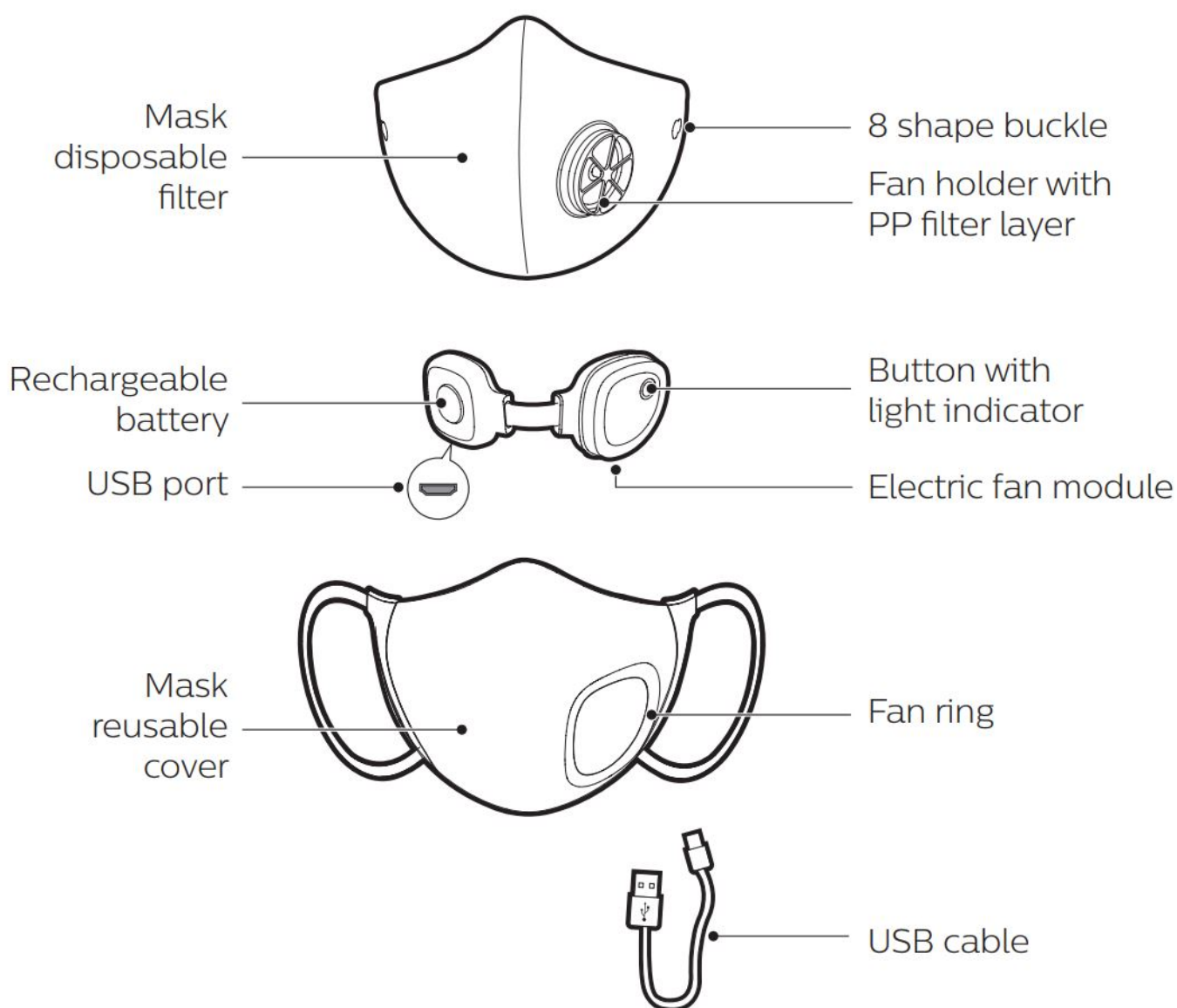
Electromagnetic fields (EMF)

This Philips appliance complies with all applicable standards and regulations regarding exposure to electromagnetic fields.

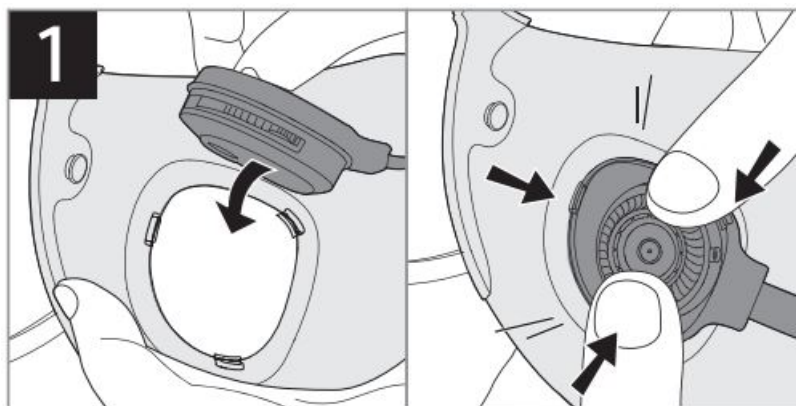
CE-marking

The mask conforms to the electro-magnetic directive (2014/30/EU) and RoHS (2011/65/EU) due to the presence of an electronic circuitry and is therefore marked with the CE-marking.

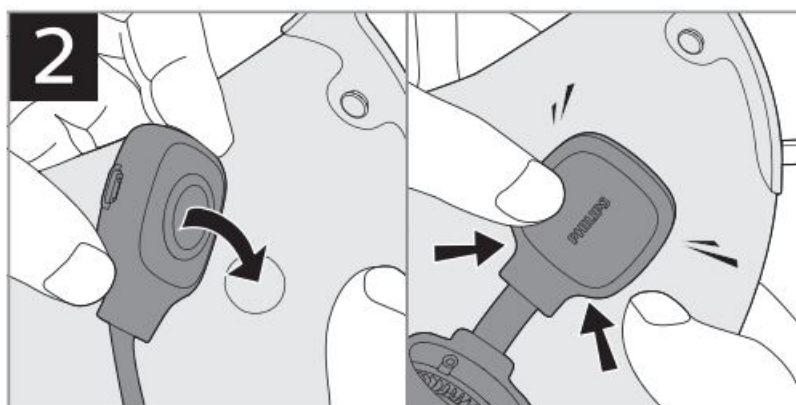
Product overview



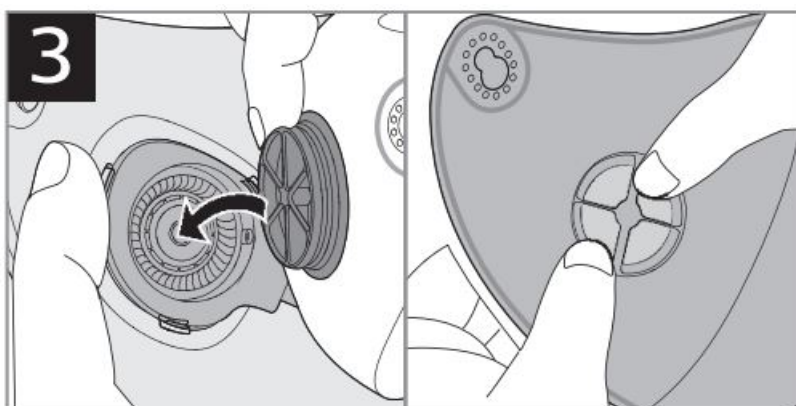
How to assemble



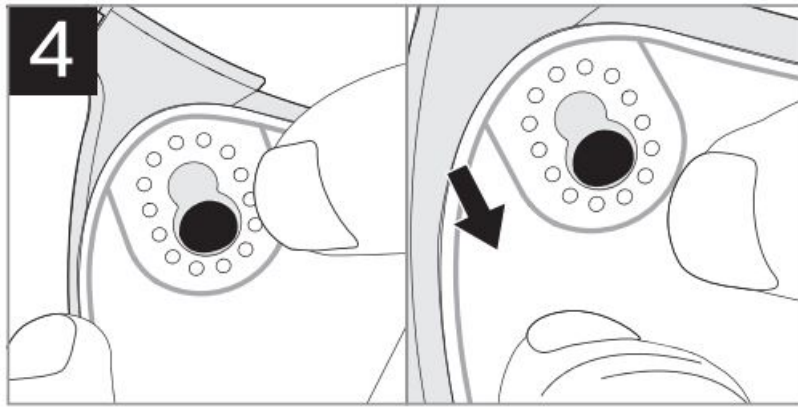
Press the electric fan into the fan ring from the inner side of the mask cover. Make sure that all 3 snaps on the ring are fastened.



Attach the battery to the magnet on the mask cover.



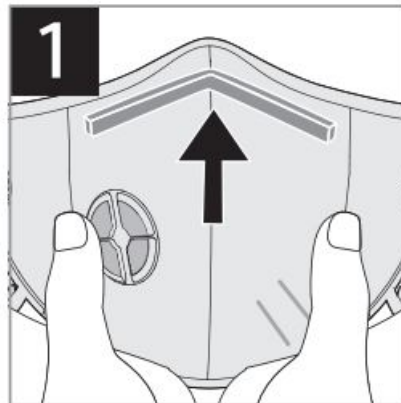
Press the fan holder into the electric fan.



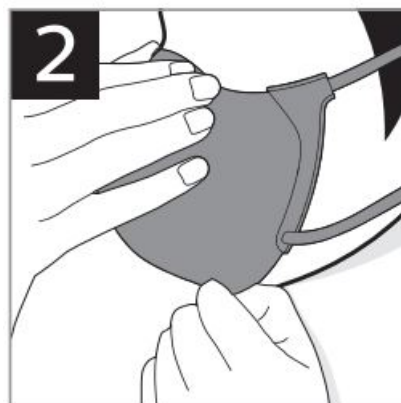
Match the filter's 8 shape buckle with the button on the inner side of the mask cover. Pull the filter until the button slips into the smaller side of the buckle.

How to wear

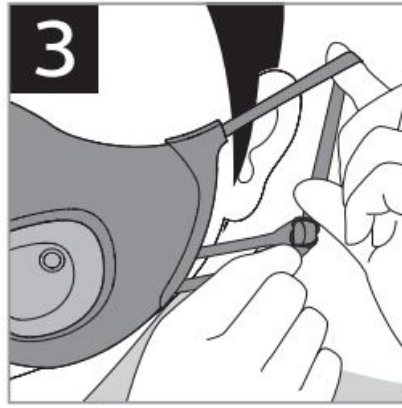
Before putting the mask on, wash your hands thoroughly with soap and water for 20 seconds or use hand sanitizer.



Position the mask on your face with adjustable nose clip facing up.



Put the face mask on, pull the ear straps around both ears, press down the mask and adjust the nose clip to fit against the bridge of the nose.



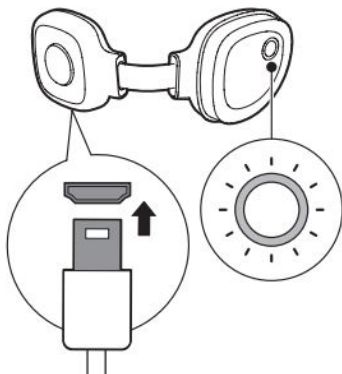
Adjust the length of the ear straps to ensure a tight-fitting seal by covering the nose and mouth fully (without air leakage).

How to remove

It is possible to contaminate your face or surroundings when removing the mask. To avoid, the recommendation are:

- Wash your hands thoroughly with soap and water for 20 seconds or use hand sanitizer before removing.
- Only handle the straps, ties or clips.
- Do not give mask to someone else to use.
- Place the mask to be washed in a specific container (clean plastic bag).
- Wash it in line with the instructions (see cleaning and maintenance).
- Wash your hands thoroughly with soap and water for 20 seconds or use hand sanitizer once removed.

Using the electric fan



Short press on the button	Once	Twice	3 times	4 times
Electric fan	Low speed	Medium speed	High speed	Off

It is always recommended to turn on the electric fan for the optimal performance.

Light ring indication:

Constantly on	Fan is on or charging completed
Blinking	Charging
Blink 3 times then off	Out of power, or fan does not work in extreme ambient temperature

Note:

- Charge before first use, until the light turns solid white.
- The recommended temperature range for charging is from 10 °C to 35 °C . Charging takes around 3 hours.
- When the battery is running low, the speed of the electric fan varies rapidly, indicating that it needs to be recharged.
- After charging, the fan module can work for 2 to 3.5 hours. Its working time will be shorter if running in low temperature environment.

Cleaning and maintenance

Electric fan module:

- Before cleaning, make sure that the fan module is turned off and that no power supply is connected.
- When necessary, wipe the surface with a soft, damp cloth or a wet paper towel.

Mask reusable cover:

- The cover can be reused. It's recommended to hand wash the mask reusable cover weekly.
- Make sure that the cover has been detached from the electric fan and filter.
- Wipe the surface using a soft, damp cloth or soak the cover in water of maximum temperature 40 °C and gently wash by hand using a mild detergent.
- Never clean the cover with abrasive cleansing products or (aggressive) liquids.
- Let the mask reusable cover drip line drying in the shade
- Do not tumble dry
- Do not dry clean
- Do not iron
- When drying, hang the mask cover from both ear straps, otherwise the mask may become deformed. Do not stretch the ear straps excessively

Mask disposable filter:

- The filter should be replaced whenever it is damaged, soiled, or causing noticeably increased breathing resistance.
- It is recommended to change filter frequently to keep good hygiene and low breathing resistance that enable superior breathing comfort.
- The consecutive duration of use of a single disposable filter is recommended to be no longer than 40 hours in order to guarantee the specified filtration efficiency. For intermittent use, it is recommended to replace the filter every 2 weeks.



Wash by hand. Maximum temperature 40 °C



Drip line drying in the shade



Do not tumble dry



Do not dry clean



Do not iron



Do not bleach



Do not insert pin

Not for use by children under 13 years. This appliance is not intended for use by persons (including children) with reduced physical, sensory or mental capabilities, or lack of experience and knowledge, unless they have been given supervision or instruction concerning use of the appliance by a person responsible for their safety.

Storage



- When storing, do not use the ear straps to bundle the mask up, as this may cause the cover to become deformed.

Note: Make sure that you remove the electric fan and filter first. To control the temperature, maintain an appropriate distance between the hair dryer and the cover of the mask to avoid burning the cover material.

- Before storing the mask for a long period of time, charge the electric fan and then store in a cool, dry place. During storage, the mask should be charged once every six months.

Troubleshooting

This chapter summarizes the most common problems that you could encounter with the appliance. If you are unable to solve a problem using the information below, contact the Consumer Care Center in your country.

Problem	Possible cause
The mask doesn't fit properly.	Inhale and exhale sharply. If air leaks around nose, readjust the nose clip. If air leaks at the edges, adjust the ear straps.
Battery life reduced	The actual working duration is impacted by the fan speed setting and ambient temperature. The battery is designed to retain up to 80 % of its original capacity after 300 complete charging cycles. Abnormal use (such as exposure to water or extreme cold) will accelerate reduction of battery capacity.
Charging fails	If the indicator blinks three times, the ambient temperature may be too high or too low for charging. The recommended charging temperature is between 10 °C and 35 °C. In other cases, please try another charger or charging cable.
There is water vapor in the fan	If the temperature outside is low, the water vapor exhaled by the human body may condense and be naturally discharged from the air outlet fan holder of the mask. This is normal and the water vapor will not affect the product safety or fan performance.
The fan speed fluctuates	When power is low, the fan speed will fluctuate 3 times to inform the user. In a low-temperature environment, the speed of the electric fan will lower automatically. The speed setting will change back automatically after the temperature rises.
The electric mask does not work, even it is fully charged during use	If the ambient temperature is too low, the fan may stop working. If this is the case, the fan will not work after pressing the button. Instead, the indicator light will blink three times. When the temperature rises, the fan will return to normal.

Specifications

Model No. ACM067

Input Voltage 5 V 

Battery Voltage 3.8 V 

Rated Power 0.8 W

LpA(***) 60 dB(A)

ta=-10 °C to 40 °C, tch=10 °C to 35 °C

*** Sound pressure level is measured 30 cm away from the fan.



© 2021 Koninklijke Philips N.V.

All rights reserved.

3000.062.5277.2



>75% recycled paper

Documents / Resources



[PHILIPS ACM067 Fresh Air Mask](#) [pdf] User Guide
ACM067, Fresh Air Mask

References

- [ear Startseite](#)

Manuals+,