


PHILIPS 55PFL5907 LED LCD Screen



PHILIPS 55PFL5907 LED LCD Screen User Guide

[Home](#) » [Philips](#) » PHILIPS 55PFL5907 LED LCD Screen User Guide 

Contents

- 1 PHILIPS 55PFL5907 LED LCD Screen
- 2 Product Information
- 3 Product Usage Instructions
- 4 Connect external devices
- 5 Network setup
- 6 What's in the box
- 7 Mount base onto TV
- 8 Connect the power and antenna or cable
- 9 Control panel
- 10 Using the remote control
- 11 First-time setup
- 12 Philips Wireless MediaConnect
 - 12.1 PC and Network Requirements
- 13 Connection overview
- 14 Documents / Resources
 - 14.1 References
- 15 Related Posts

PHILIPS

PHILIPS 55PFL5907 LED LCD Screen



Product Information

Specifications

- Model Numbers: 55PFL5907, 50PFL5907, 46PFL5907, 42PFL5907
- Picture Quality: HD viewing based on the connected signal source
- Connectivity: HDMI ports, VGA port, USB port, Ethernet port

Product Usage Instructions

Connect External Devices

To connect external devices to your TV, you can use the following cables:

- HDMI cable – for Blu-ray or DVD player, home theater system, cable or satellite set-top box, PC, or game console
- VGA cable – for connecting a PC
- Audio cable – for connecting audio devices such as a VCR or headphones
- Composite Video cable – for connecting a VCR or video game console
- Component Video cable – for connecting a Blu-ray or DVD player, home theater system, cable or satellite set-top box, or game console
- Digital Audio coaxial cable – for connecting a home theater system
- Digital Audio optical cable – for connecting a home theater system
- USB Memory Stick – for accessing media files

Network Setup

To set up a network connection on your TV, follow these steps:

1. Connect a live Ethernet cable from your network provisioning equipment to the back/side of the TV.
2. Select “Installation” and then “Network” from the TV menu.
3. If your router has Wi-Fi Protected Setup (WPS), select “Easy Connect” and press OK. If not, select “Scan” to search for available networks.
4. Once the network connection test passes, your TV is successfully connected to the network.

Software Updates

Your TV may require software updates for performance and feature enhancements. Follow these steps to update

the firmware:

1. When a new firmware version is detected, an auto update announcement will appear on the screen.
2. Verify your settings and try again if the update fails.
3. Refer to page 12 of the manual for detailed instructions on updating the software.

Frequently Asked Questions (FAQ)

Q1: Where can I find customer support?

A: For further assistance, call the customer support service in your country or visit the website at www.philips.com/support.

Q2: How can I improve my TV picture quality for HD viewing?

A: The picture quality for HD viewing is based on the connected signal source. Contact your local Cable/Satellite provider for High Definition Signal availability in your area.

Q3: How do I connect external devices to my TV?

A: Use the appropriate cables (HDMI, VGA, Audio, Composite Video, Component Video, Digital Audio) to connect your Blu-ray or DVD player, home theater system, cable or satellite set-top box, PC, game console, VCR, USB Memory Stick, or headphones to the respective ports on the TV.

If you have any questions, please visit our website at www.philips.com/support

For further assistance, call the customer support service in your country.

- To obtain assistance, contact Philips Customer Care Center;

In the U.S.A., Canada, Puerto Rico, or the U.S. Virgin Islands

1 866 309 0843

Enter below the model and serial numbers located on the back and right side of the TV cabinet.

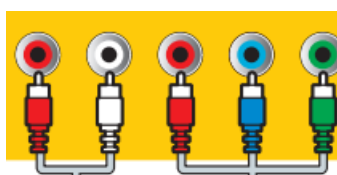
Best

Connection for Digital High Definition Video & Audio.



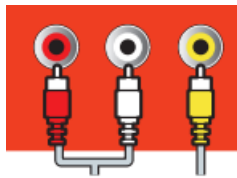
Better

Connection for products that do not have HDMI Output.



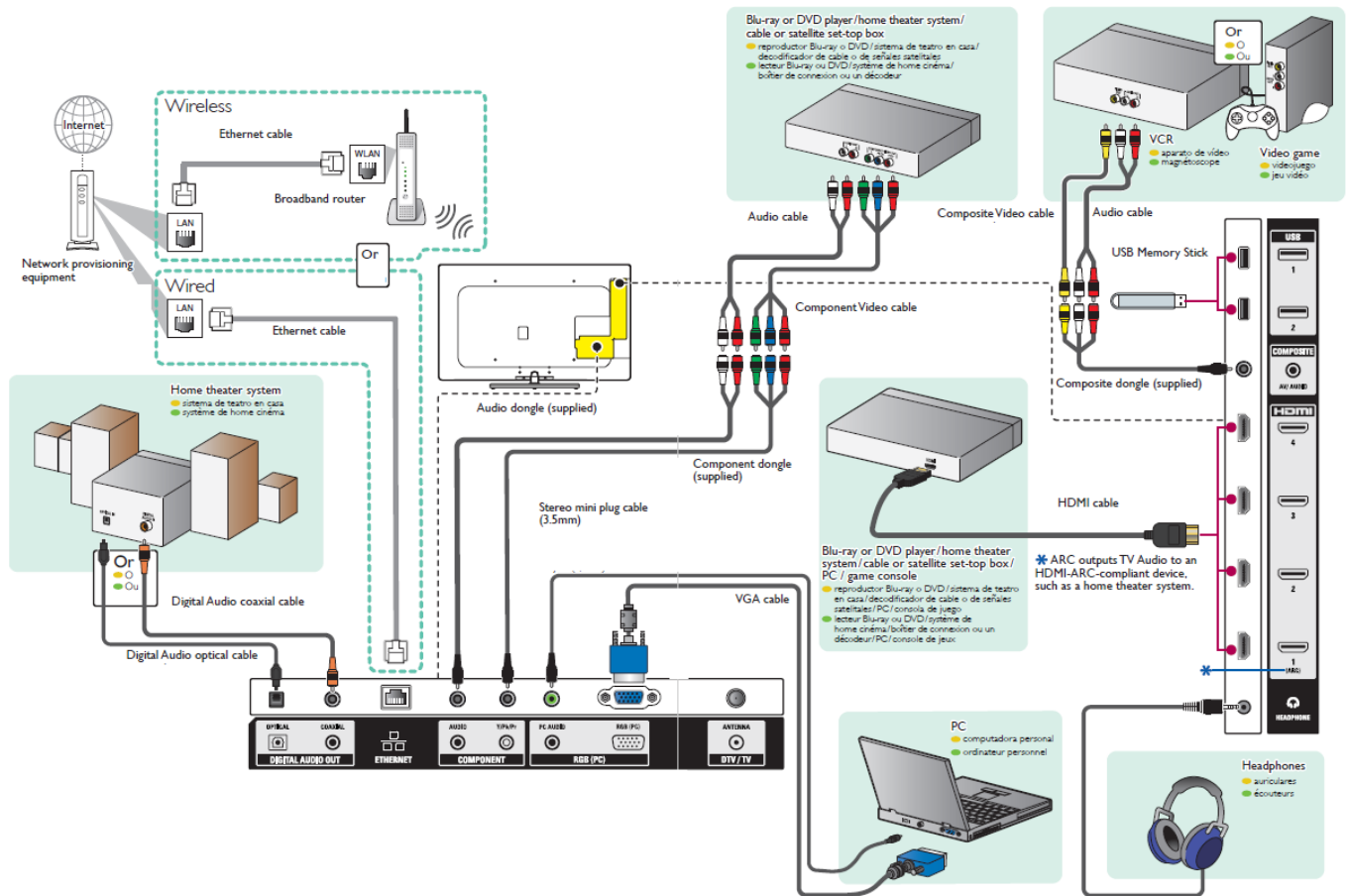
Good

Connection for non-HD accessory products.



Remember, your TV picture quality for HD viewing is based on the connected signal source.
Contact your local Cable / Satellite provider for High Definition Signal availability in your area.

Connect external devices



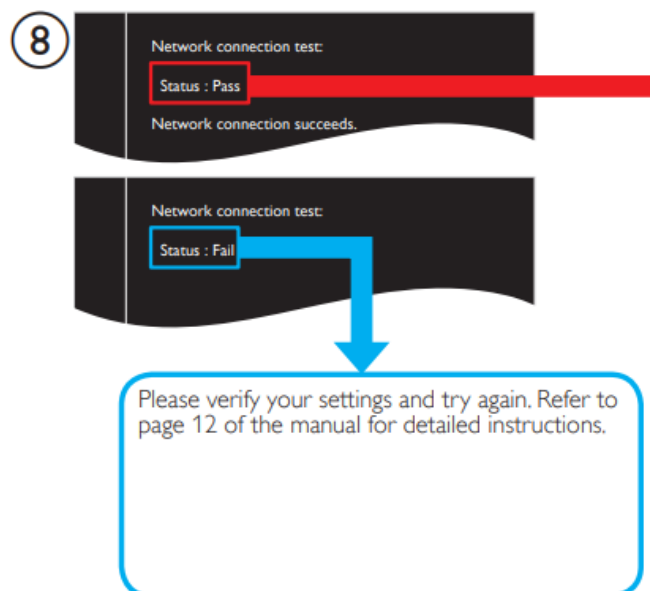
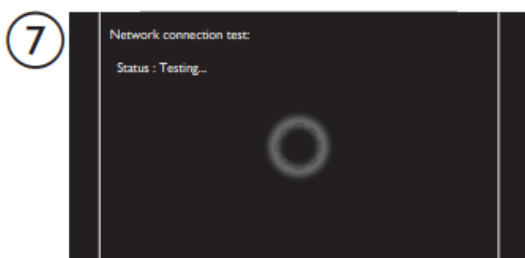
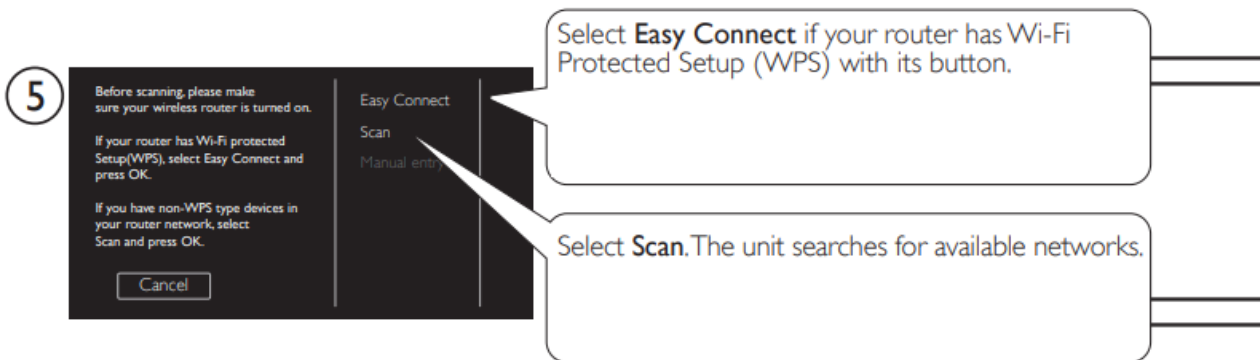
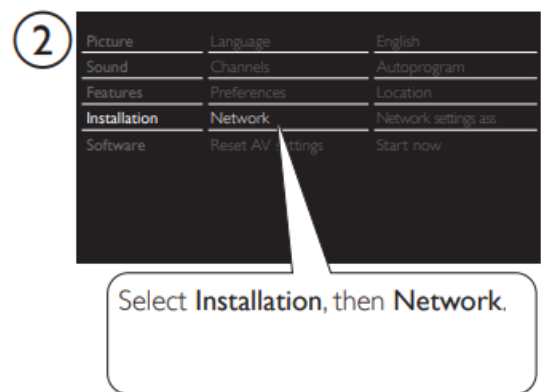
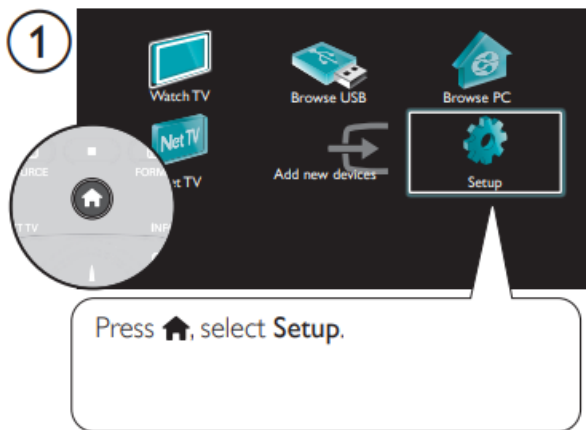
Connectivity at a glance

1	HDMI 1 (HDMI-DVI) + PC Audio	5	Component Video + Audio L/R
2	HDMI 2	6	Composite Video + Audio
3	HDMI 3	7	VGA
4	HDMI 4		

Network setup

Wired

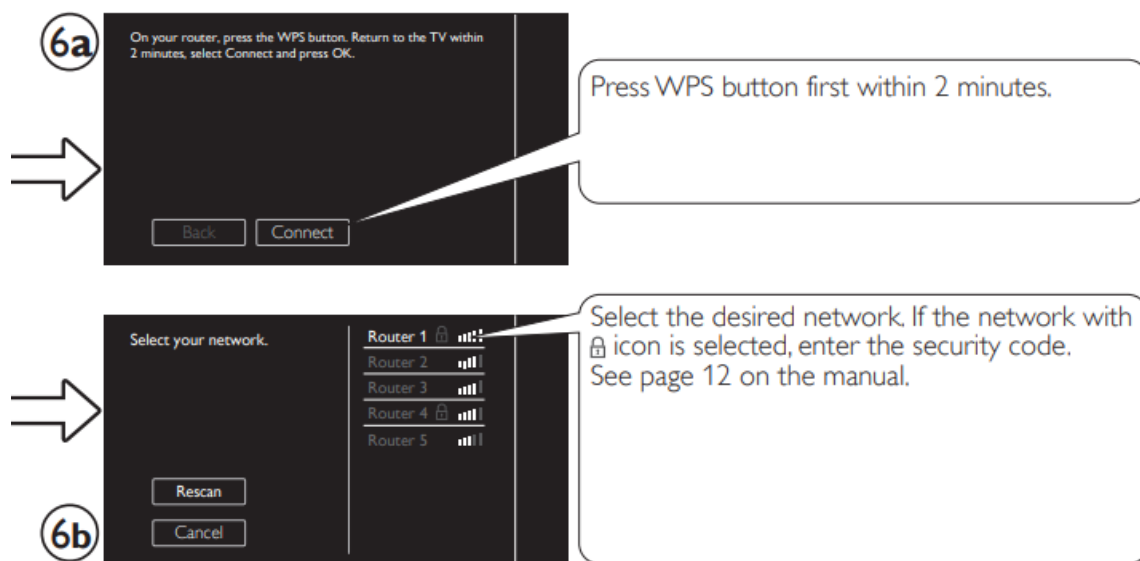
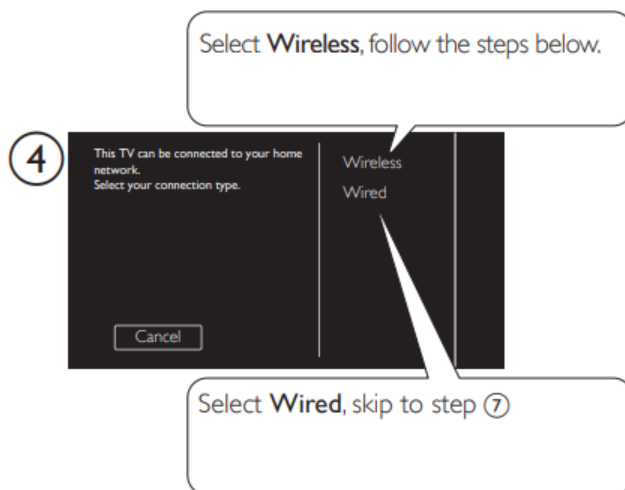
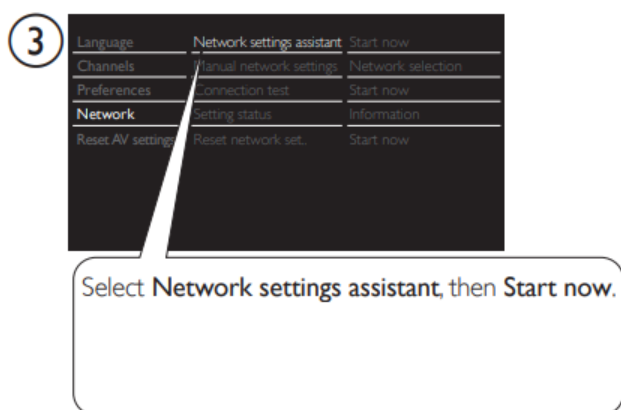
Please connect a live Ethernet cable from your network provisioning equipment to the back/side of this TV before proceeding with the setup below.



Your TV requires software updates once in a while for performance and feature enhancements. Auto update announcement will pop up when new firmware version is detected.

Wireless

Please make a note of the name of your wireless network, its security type and security code before proceeding with the setup 6b In the process below, use either 6a or 6b.



Press OK to exit.

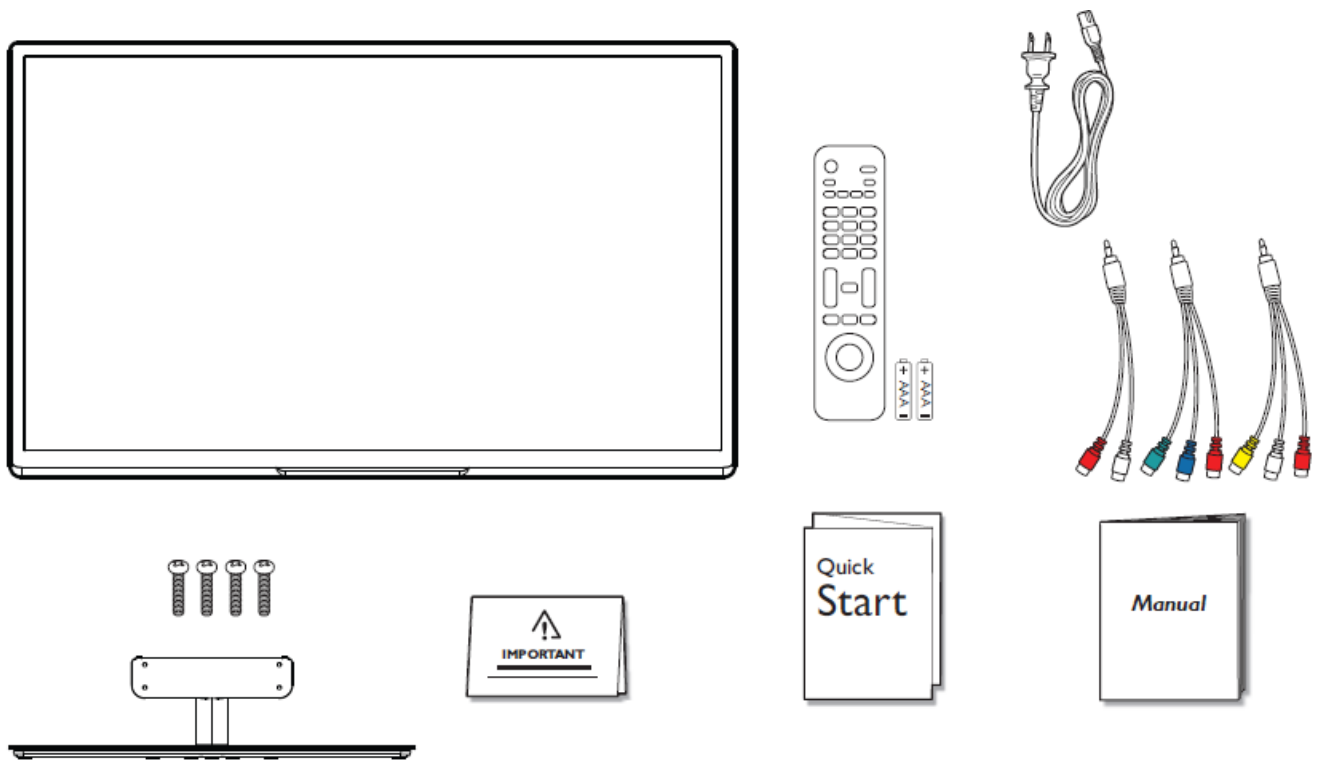
Enjoy your Net TV!



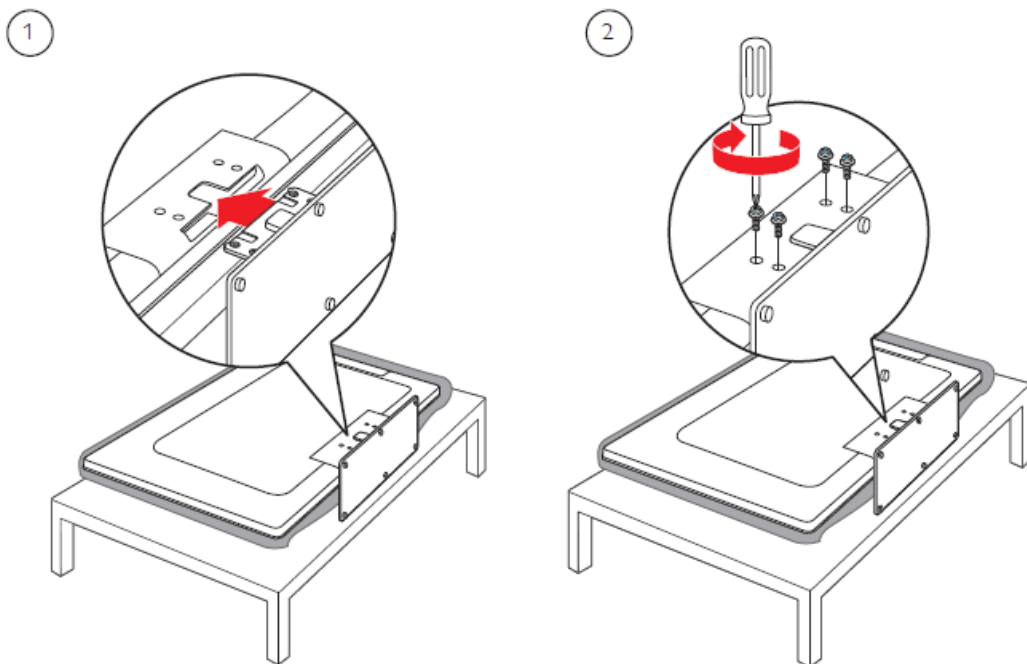
Network service icons may differ according to country you set.

VUDU can only be viewed in the USA and Netflix (version 3.1) equipped with this unit is applicable in the USA and Canada only.

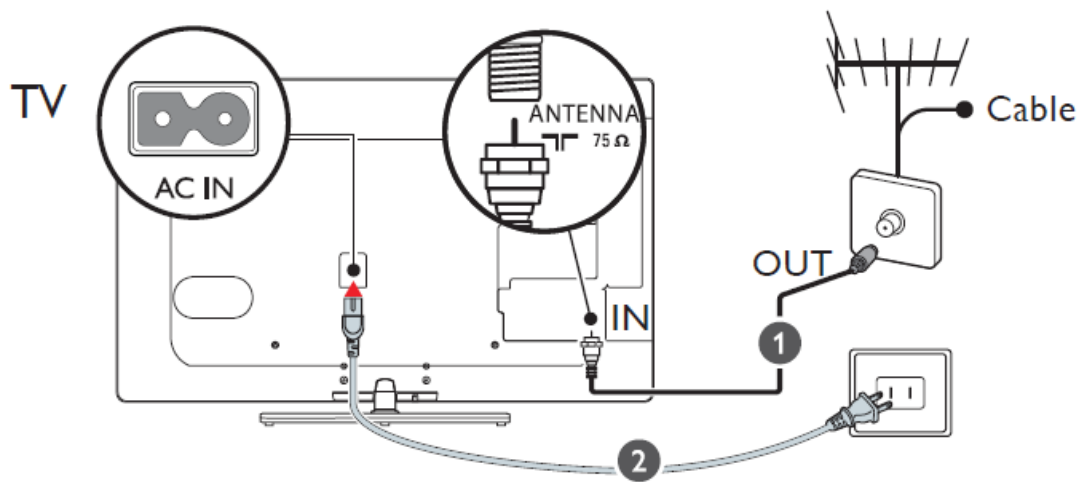
What's in the box



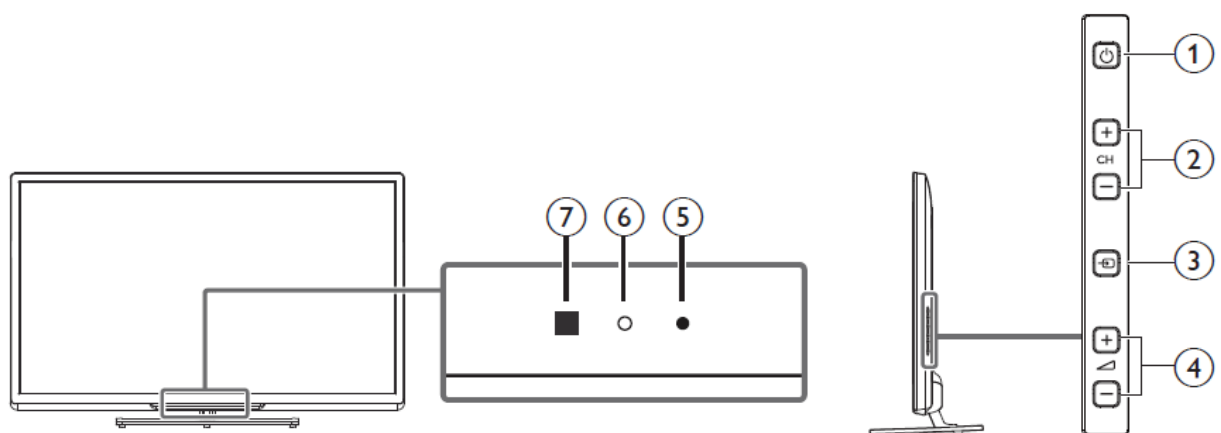
Mount base onto TV



Connect the power and antenna or cable



Control panel



1.



(POWER / STANDBY)

Touch to turn the unit On and go into Standby mode. To completely turn Off the unit, you must unplug the AC power cord.

2. CH + / -

Touch to select channels or to move up (+) / down (-) when selecting menu items.

3. SOURCE

Toggle to select connected devices.

4. VOLUME + / -

Press to adjust volume down (-) / up (+) or to move left (-) / right (+) when selecting menu items.

5. Ambient light sensor

Alters the brightness of the TV screen automatically by detecting your room lighting level. Do not block the light sensor allowing it to work properly.

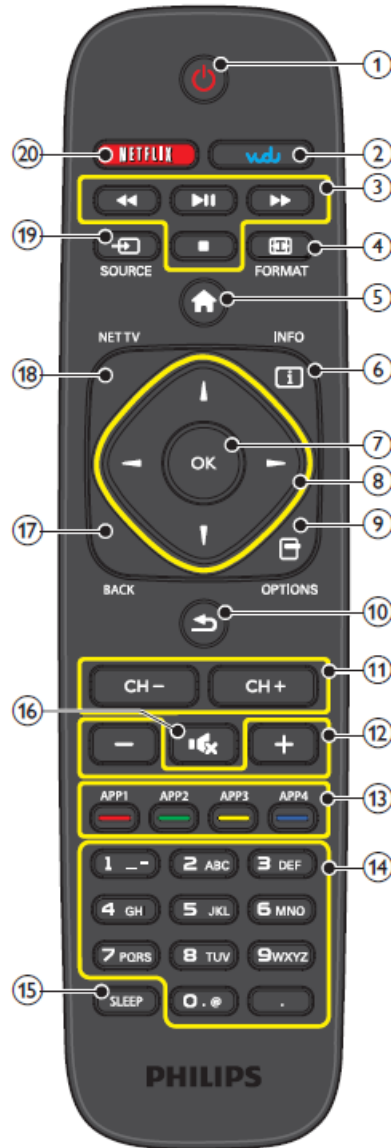
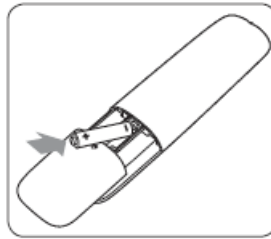
6. Power On indicator

Lights up white when the unit is turned On and fl ashes while the unit is turning On.

7. Infrared sensor

Receives IR signals from remote control.

Using the remote control



1.



(POWER-ON / STANDBY-ON)

2. VUDU

Access to VUDU directly.

3. EasyLink(HDMI CEC) buttons

Functionally useful for EasyLink(HDMI CEC), net service and DLNA.

4.



FORMAT

Selects a picture format.

5.



(MENU button

Access to menu.

6. INFO



Displays information about the TV channel or accessory device.

7. OK

8. (NAVIGATION buttons

9. OPTIONS

Displays a list of menu items applicable to the highlighted object or screen.

10. (PREV. CH button

11. CH +/-

12. +/- (VOLUME

13. Apps (App1/App2/App3/App4) buttons

Works as direct access to user specified net apps.

14. 0 – 9 (NUMBER buttons

- DOT

15. SLEEP

16. (MUTE

17. BACK

Go back to previous menu or screen.

18. NET TV

Access to Net TV menu directly.

19. SOURCE

Toggle and select connected devices.

20. NETFLIX

Access to Netflix directly.

First-time setup

Follow the on-screen instructions to complete your TV setup.

Philips Wireless MediaConnect

Get the software first!

1. Make a note of the MediaConnect code

Press , then use ▲ ▼ ◀ ▶ to select Setup > Software > MediaConnect code.

1. Write down the 12-digit code displayed on the screen. You will need this to download MediaConnect software.

2. Visit our web site at

www.wifimediaconnect.philips.com

3. Download

Enter the 12 digit code you wrote at step 1 and download the MediaConnect software.

4. Install

Once downloaded, run the file 'Philips Wireless MediaConnect_setup.exe'. Follow the instructions on your PC to complete installation.

PC and Network Requirements

Supported OS

Windows XP, Windows Vista, Windows 7, Mac OS X 10.5 or above (PC only)

Minimum requirements

- Intel Core 2 Duo 1.8GHz
- 512MB RAM
- IEEE 802.11n (PC & Wireless Router)

Recommended requirements

- Intel Core 2 Duo 2.1GHz
- 1GB RAM

Connection overview

Caution

Disconnect the AC power cord before connecting devices.

Note for USB terminal

The software upgrade is, in most cases, handled by an authorized service person or in some circumstances the user may be asked to do the software upgrade themselves.

If you need to upgrade the software, please visit www.philips.com/support

For HDMI 1 only


In addition to normal HDMI functionality, outputs TV audio to an HDMI ARC-compliant device, such as a home theater system.

For complete instructions, please visit www.philips.com/support to download the full version of the User Manual.

Philips and Philips Shield are used under license of Koninklijke Philips Electronics N.V.

www.philips.com/support

Documents / Resources

	<p>PHILIPS 55PFL5907 LED LCD Screen [pdf] User Guide</p> <p>55PFL5907 LED LCD Screen, 55PFL5907, LED LCD Screen, LCD Screen, Screen</p>
---	--

References

- [Philips Customer Service Support - Home | Philips](#)
- [Philips Customer Service Support - Home | Philips](#)
- [Manual-Hub.com - Free PDF manuals!](#)
- [User Manual](#)

Manuals+. Privacy Policy

This website is an independent publication and is neither affiliated with nor endorsed by any of the trademark owners. The "Bluetooth®" word mark and logos are registered trademarks owned by Bluetooth SIG, Inc. The "Wi-Fi®" word mark and logos are registered trademarks owned by the Wi-Fi Alliance. Any use of these marks on this website does not imply any affiliation with or endorsement.