



PHILIPS 345B1 B Line Smart LED Display User Guide

[Home](#) » [Philips](#) » PHILIPS 345B1 B Line Smart LED Display User Guide 

PHILIPS

**345B1 B Line Smart LED Display
User Guide**

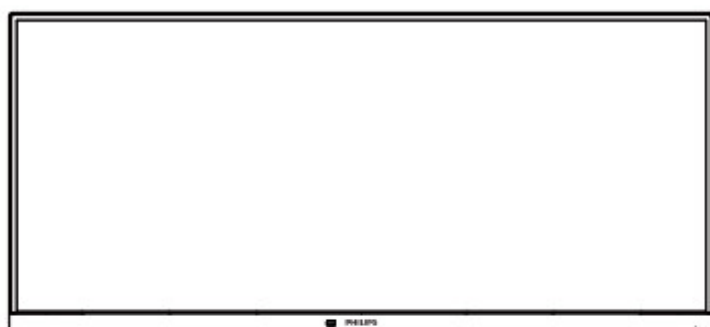


Contents

- [1 345B1 B Line Smart LED Display](#)
- [2 Documents / Resources](#)
 - [2.1 References](#)
- [3 Related Posts](#)

345B1 B Line Smart LED Display

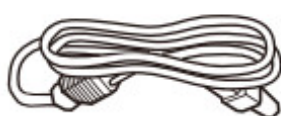
Register your product and get support at www.philips.com/support



Stand/Base



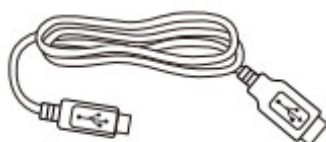
* I/O Cover



Power



* HDMI

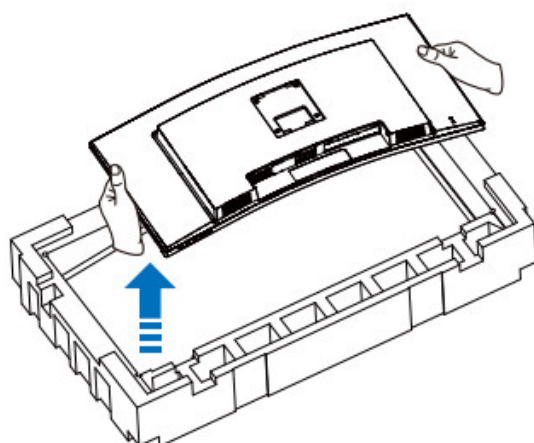
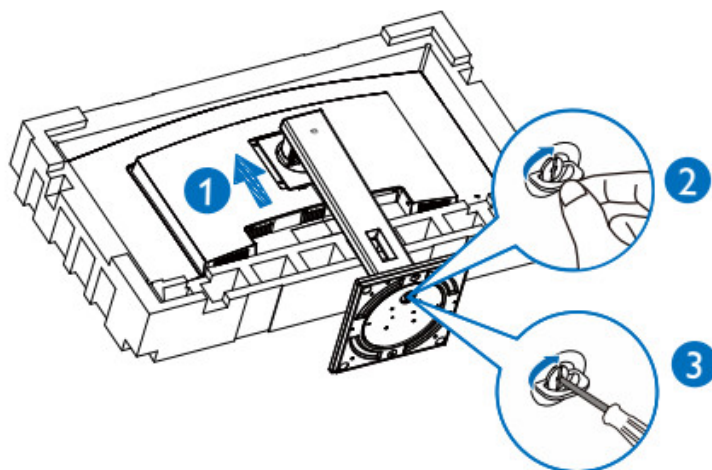


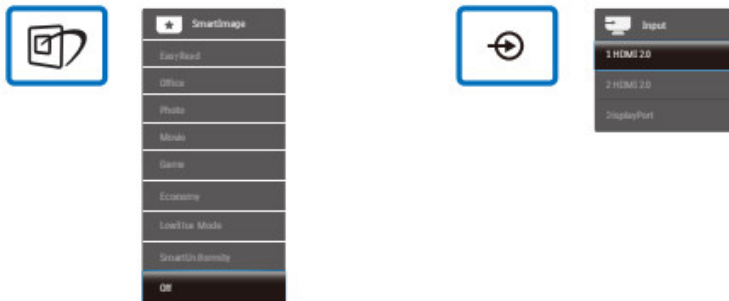
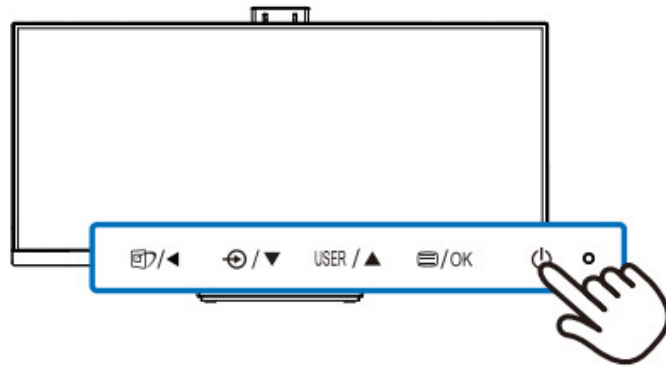
* USB

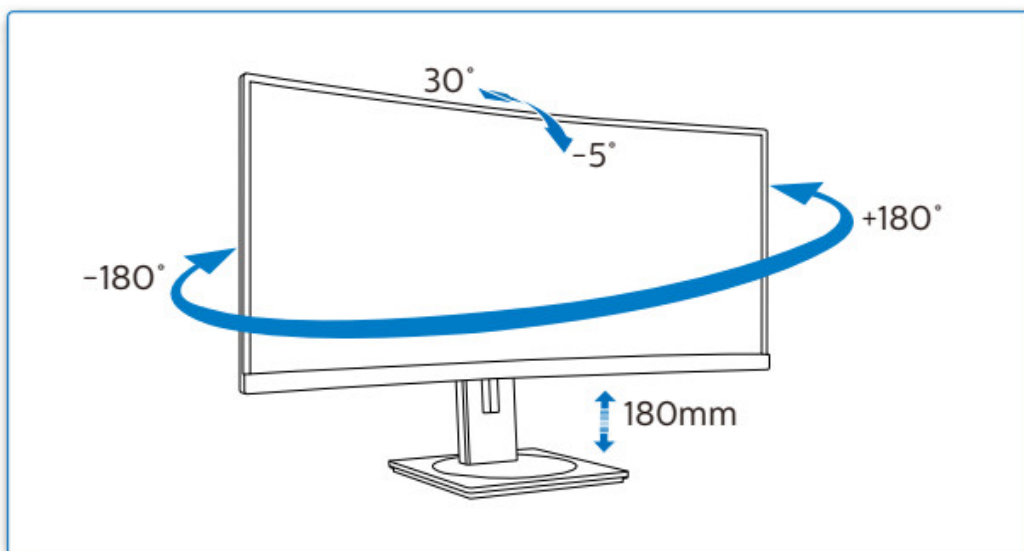
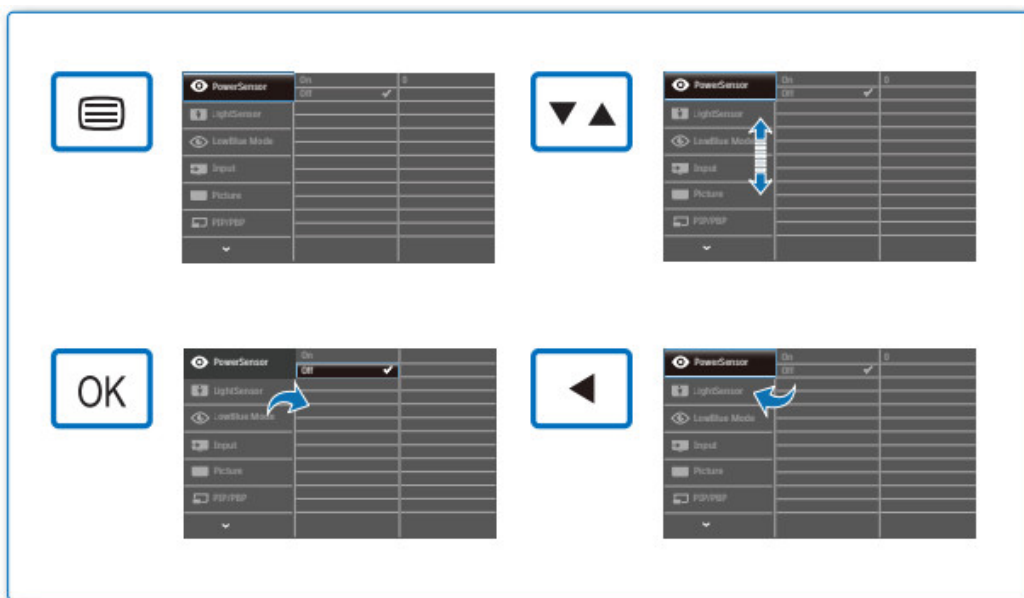


* DP

* Different according to region.
Display design may differ from those illustrated.







Register your product and get support at www.philips.com/support





FAQ



Software
SmartControl



User
Manual

Version: M10345B1Q1T

2019 © TOP Victory Investments Ltd. All rights reserved.

This product has been manufactured by and is sold under the responsibility of Top Victory Investments Ltd., and Top Victory Investments Ltd. is the warrantor in relation to this product. Philips and the Philips Shield Emblem have registered trademarks of Koninklijke Philips N.V. and are used under license. \

Specifications are subject to change without notice.



The terms HDMI, HDMI High-Definition Multimedia Interface, and the HDMI Logo are trademarks or registered trademarks of HDMI Licensing

Administrator, Inc. www.philips.com

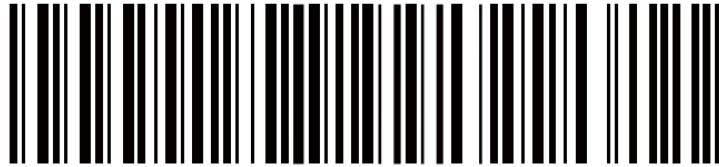
Energy Labelling
345B1C



<https://eprel.ec.europa.eu/qr/420503>



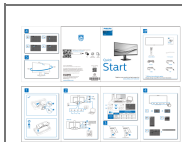
Printed in China



H41G78S381342A



Documents / Resources



[PHILIPS 345B1 B Line Smart LED Display](#) [pdf] User Guide
345B1 B Line Smart LED Display, 345B1, B Line, Smart LED Display

References

- [Philips - United States | Philips](#)
- [Philips Customer Service Support - Home | Philips](#)
- [Product registration | Philips](#)

[Manuals+](#)