



**3000 Series Wireless
Keyboard Mouse Combo**



PHILIPS 3000 Series Wireless Keyboard Mouse Combo User Manual

[Home](#) » [Philips](#) » PHILIPS 3000 Series Wireless Keyboard Mouse Combo User Manual 

Contents

- [1 PHILIPS 3000 Series Wireless Keyboard Mouse Combo](#)
- [2 Specifications](#)
- [3 Product Usage Instructions](#)
- [4 BOX CONTENT](#)
- [5 POWER ON/OFF FUNCTION](#)
- [6 SETTING](#)
- [7 FCC STATEMENT](#)
- [8 FAQ](#)
- [9 Documents / Resources](#)
 - [9.1 References](#)



PHILIPS 3000 Series Wireless Keyboard Mouse Combo



Specifications

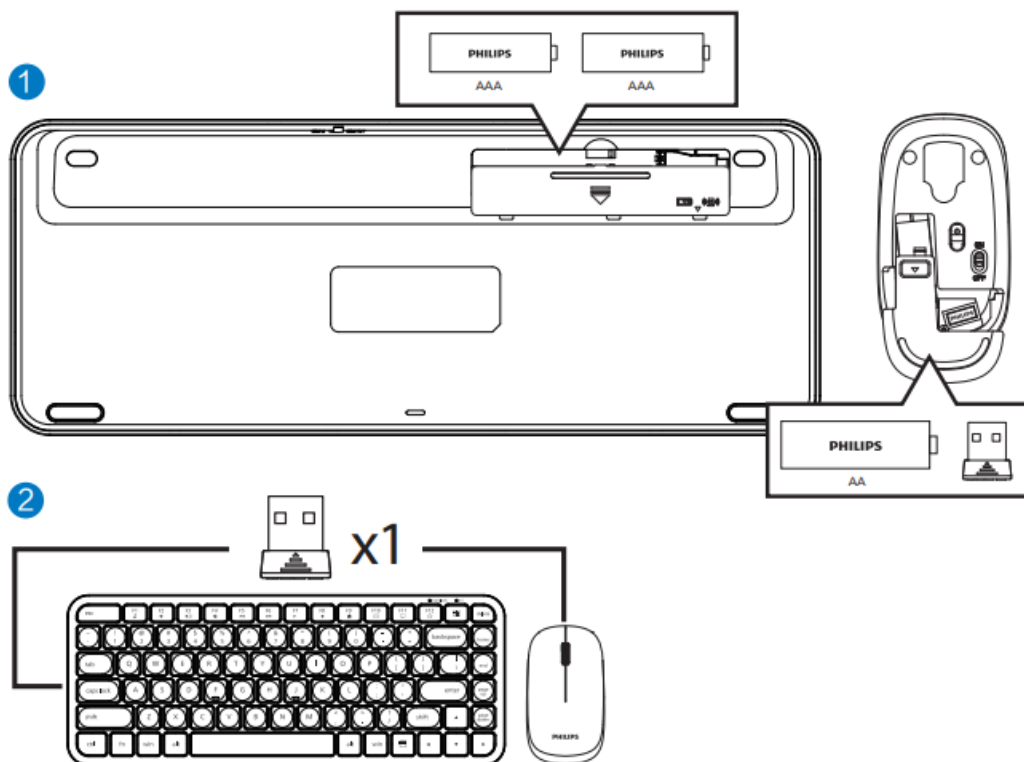
- **Connectivity:** 2.4GHz wireless
- **Effective Wireless Range:** 15m
- **Number of Buttons:** 3
- **Mouse Button Lifespan:** 3 million keystrokes
- **Keyboard Key Lifespan:** 10 million keystrokes
- **Resolution:** 1600 dpi
- **Power Source:** 1 x AA Philips battery (mouse), 2 x AAA Philips batteries (keyboard)
- **Interface:** USB wireless receiver
- **Product Dimensions:** Mouse – 106.5×59.7×31.4mm, Keyboard – 310.7×121.3×22.1mm
- **Operating Humidity Range:** 10% – 85%

Product Usage Instructions

Step 1: System Requirements

Make sure your system meets the following requirements:

- Available USB port
- Compatible with Microsoft Windows 7, Windows 8, Windows 10 or later; Linux V1.24 and above; Mac OS 10.5 and above



Note: Multimedia functions are partially invalid in different OS versions

Step 2: Setup

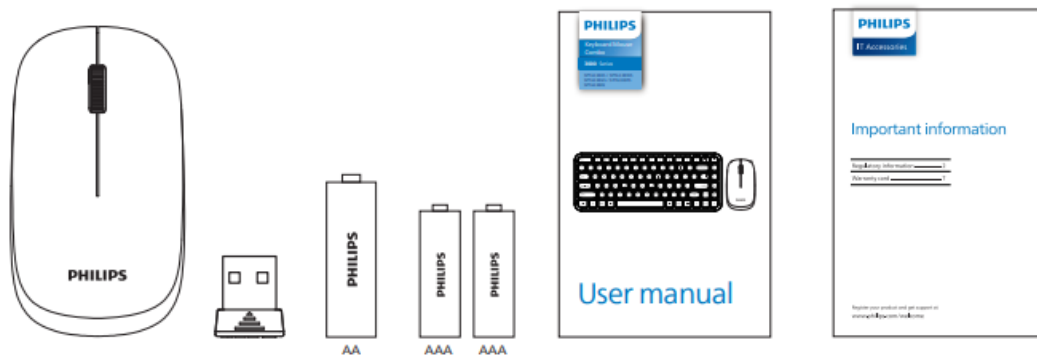
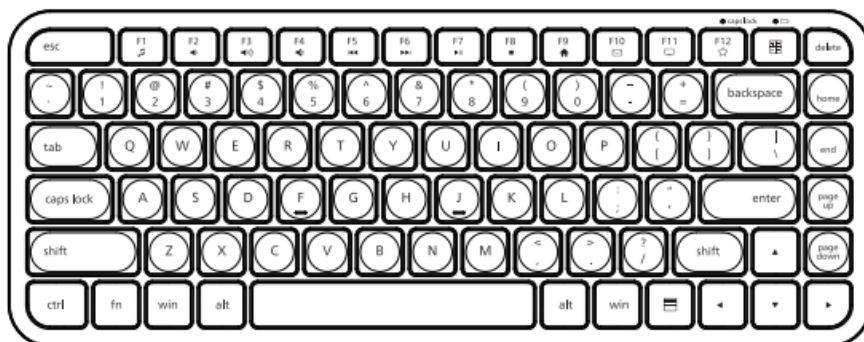
Follow these steps to set up your Keyboard Mouse Combo:

1. Insert the USB wireless receiver into an available USB port on your computer.
2. Insert the AA battery into the mouse and the AAA batteries into the keyboard.
3. Turn on the power switch on both the mouse and keyboard.

Step 3: Usage

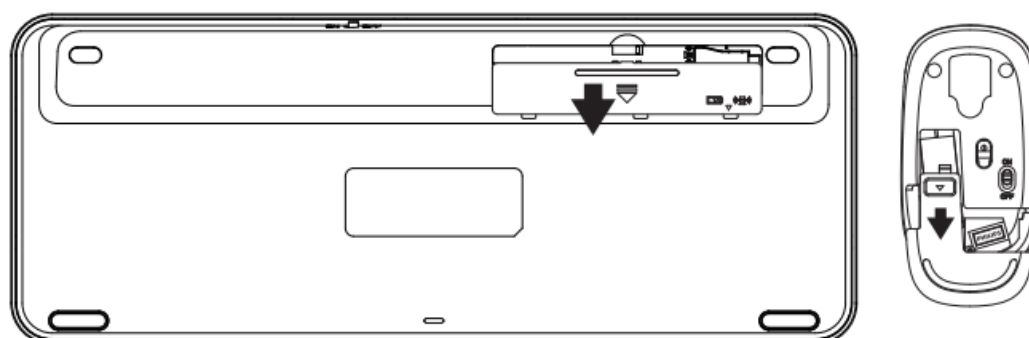
Your Keyboard Mouse Combo is now ready to use. Enjoy the wireless freedom and ergonomic design for comfortable operation.

BOX CONTENT

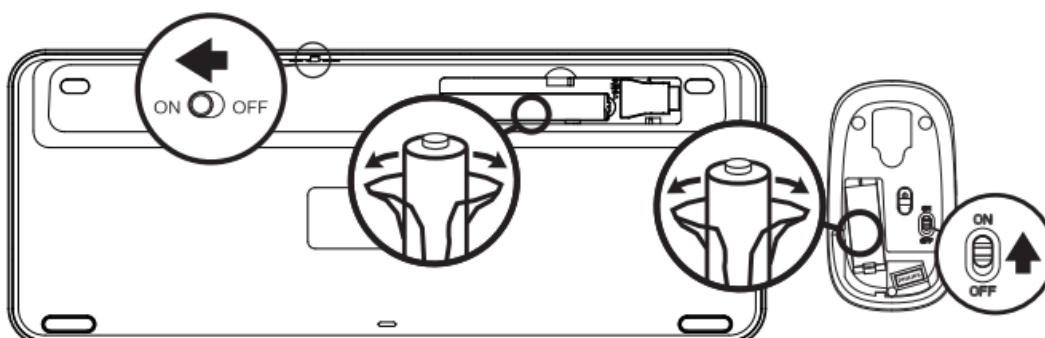


POWER ON/OFF FUNCTION

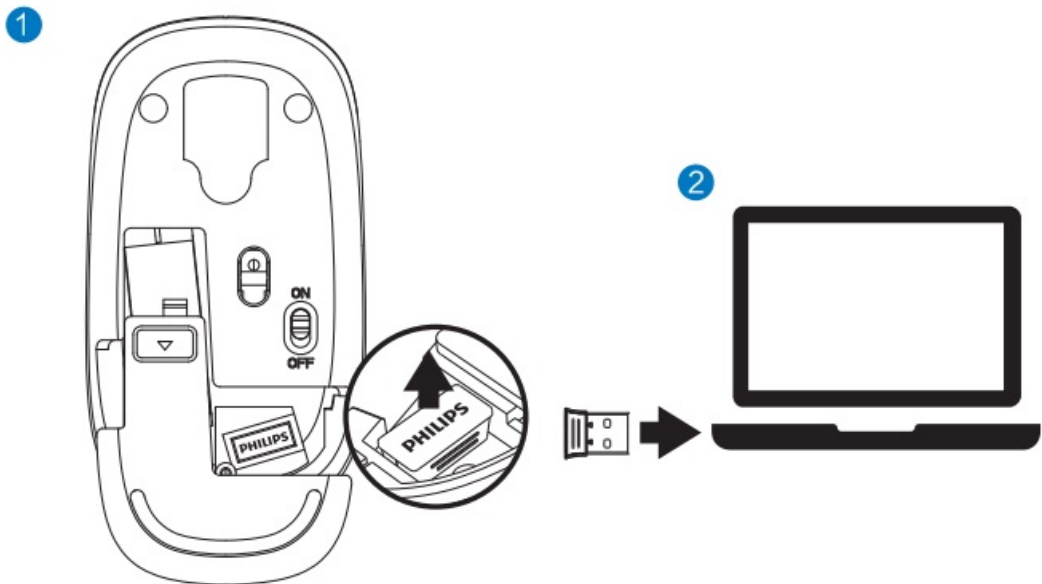
1



2



SETTING



INSTRUCTION



www.philips.com/support

FCC STATEMENT

This device complies with part 15 of the FCC Rules. Operation is subject to the following two conditions:

1. This device may not cause harmful interference, and
2. this device must accept any interference received, including interference that may cause undesired operation.

Any Changes or modifications not expressly approved by the party responsible for compliance could void the user's authority to operate the equipment.

Note: This equipment has been tested and found to comply with the limits for a Class B digital device, pursuant to part 15 of the FCC Rules. These limits are designed to provide reasonable protection against harmful interference in a residential installation.

This equipment generates uses and can radiate radio frequency energy and, if not installed and used in accordance with the instructions, may cause harmful interference to radio communications. However, there is no guarantee that interference will not occur in a particular installation. If this equipment does cause harmful interference to radio or television reception, which can be determined by turning the equipment off and on, the user is encouraged to try to correct the interference by one or more of the following measures:

- Reorient or relocate the receiving antenna.
- Increase the separation between the equipment and receiver.
- Connect the equipment into an outlet on a circuit different from that to which the receiver is connected.
- Consult the dealer or an experienced radio/TV technician for help.

The device has been evaluated to meet general RF exposure requirements. The device can be used in portable exposure condition without restriction.

2024 © Top Victory Investments Limited . All rights reserved.

- Philips and the Philips Shield Emblem are registered trademarks of Koninklijke Philips N.V. and are used under license.
- This product has been manufactured by and is sold under the responsibility of Top
- Victory Investments Limited , and Top Victory Investments Limited is the warrantor in relation to this product.
- Specifications are subject to change without notice

Made in China

Register your product and get support at: www.philips.com/welcome

FAQ

Q: What are the system requirements for the Keyboard Mouse Combo?

A: The system requirements include an available USB port and compatibility with Microsoft Windows 7, Windows 8, Windows 10 or later; Linux V1.24 and above; Mac OS 10.5 and above.


Q: How do I replace the batteries in the mouse and keyboard?

A: To replace the batteries, open the battery compartment on the mouse and keyboard, remove the old batteries, insert new ones following the correct polarity, and close the compartment securely.

Q: Can I use the Keyboard Mouse Combo with a different operating system?

A: The Keyboard Mouse Combo is designed to work best with the specified operating systems mentioned in the user manual. Compatibility with other operating systems may vary, and some multimedia functions may not work as intended.

Documents / Resources

	PHILIPS 3000 Series Wireless Keyboard Mouse Combo [pdf] User Manual 3000 Series, 3000 Series Wireless Keyboard Mouse Combo, Wireless Keyboard Mouse Combo , Keyboard Mouse Combo, Mouse Combo
---	---

References

-  [Philips Customer Service Support - Home | Philips](#)
- [User Manual](#)

[Manuals+](#), [Privacy Policy](#)

This website is an independent publication and is neither affiliated with nor endorsed by any of the trademark owners. The "Bluetooth®" word mark and logos are registered trademarks owned by Bluetooth SIG, Inc. The "Wi-Fi®" word mark and logos are registered trademarks owned by the Wi-Fi Alliance. Any use of these marks on this website does not imply any affiliation with or endorsement.