

PHILIPS

3000 Series
Computer
Monitor



PHILIPS 3000 Series Computer Monitor User Guide

[Home](#) » [Philips](#) » PHILIPS 3000 Series Computer Monitor User Guide 

Contents

- [1 PHILIPS 3000 Series Computer Monitor](#)
- [2 Setup Instructions](#)
- [3 FAQ](#)
- [4 Documents / Resources](#)
 - [4.1 References](#)
- [5 Related Posts](#)

PHILIPS

PHILIPS 3000 Series Computer Monitor

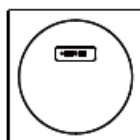
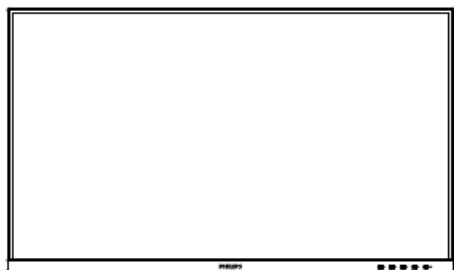


Quick Start Guide

Register your product and get support at www.philips.com/welcome

Contents

- Monitor: 32B1N3800
- Power Cable
- HDMI Cable
- DP Cable
- USB A-B Cable



Power



HDMI



DP



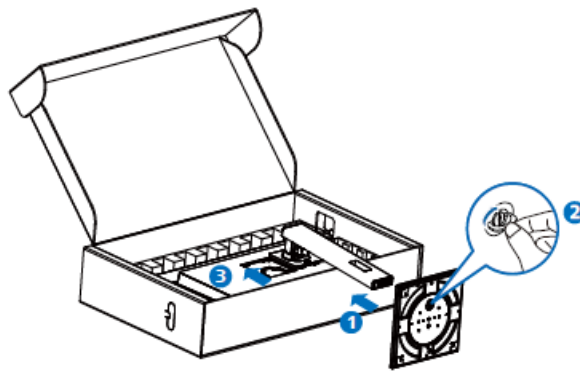
USB A-B

Note: The images shown are for illustrative purposes only. Actual product and accessory may vary by country or region. Actual product and accessory shall prevail in kind.

Setup Instructions

Step 1: Monitor Placement

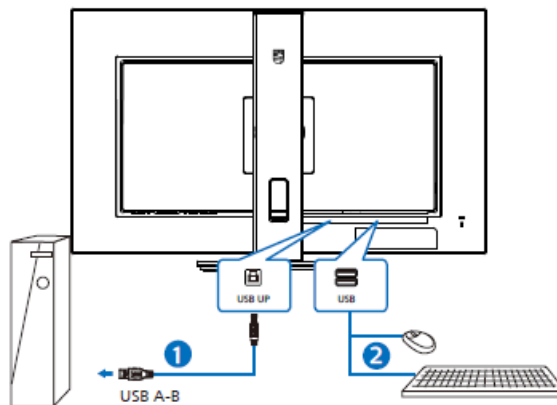
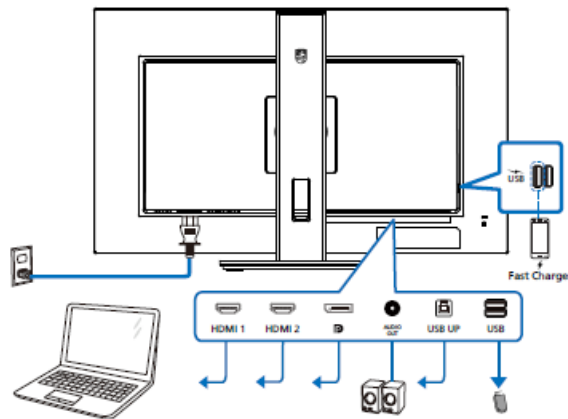
CAUTION: Place the monitor face down on a smooth surface. Pay attention not to scratch or damage the screen.



Step 2: Connection Setup

Connect the cables as shown below:

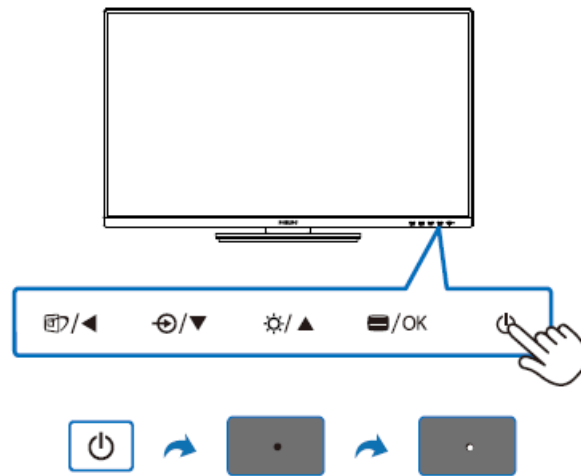
- Connect the HDMI or DP cable to the monitor and your computer.
- Use the USB A-B cable to connect the monitor's USB hub to your computer.
- Connect the power cable to the monitor and a power outlet.



Step 3: USB Hub

The monitor includes a USB hub with the following ports:

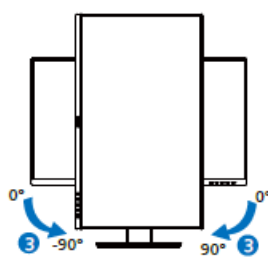
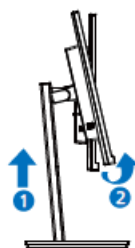
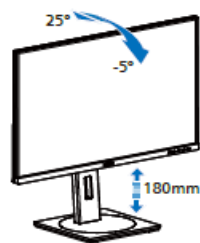
- USB A-B (for connection to the computer)
- USB UP (for upstream connection)
- USB (for peripheral devices)

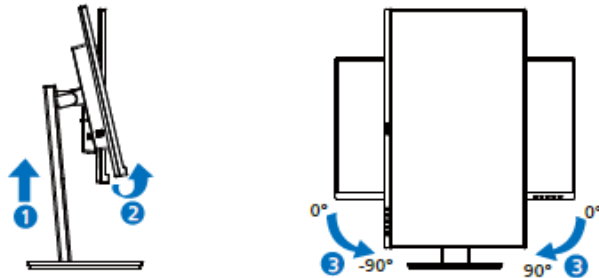
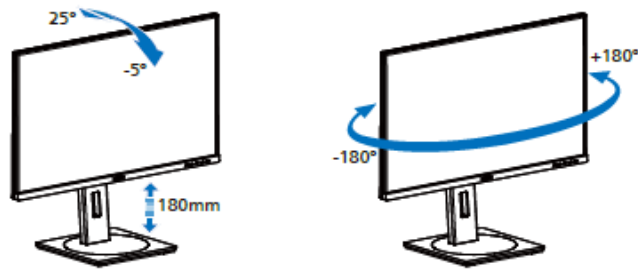


Step 4: Monitor Adjustment

Adjust the monitor's tilt and height for optimal viewing:

- Tilt: -5° to 20°
- Height Adjustment: 180mm





Register your product and get support at
www.philips.com/support



FAQ



Software
SmartControl



User
Manual

www.philips.com/support

Specifications

Model	32B1N3800
Version	M1132BN3800Q1WWT
Energy Labelling	32B1N3800
Manufactured by	Top Victory Investments Ltd.

Additional Information

This product has been manufactured by and is sold under the responsibility of Top Victory Investments Ltd., and Top Victory Investments Ltd. is the warrantor in relation to this product. Philips and the Philips Shield Emblem are registered trademarks of Koninklijke Philips N.V. and are used under license.

Specifications are subject to change without notice.

The terms HDMI, HDMI High-Definition Multimedia Interface, HDMI Trade Dress and the HDMI Logos are trademarks or registered trademarks of HDMI Licensing Administrator, Inc.

FAQ

1. Where can I register my product?

You can register your product at www.philips.com/welcome.

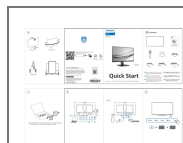
2. Where can I find support for my monitor?

Support is available at www.philips.com/support.

3. What should I do if my monitor screen gets scratched?



Ensure to place the monitor face down on a smooth surface to avoid scratches. If scratched, contact Philips support for assistance.

Documents / Resources



[PHILIPS 3000 Series Computer Monitor](#) [pdf] User Guide
32B1N3800-00, M1132BN3800Q1WWT, 3000 Series Computer Monitor, 3000 Series, Computer Monitor, Monitor

References

-  [Philips - United States | Philips](#)
-  [Support Home | Philips](#)
- [User Manual](#)

[Manuals+](#). [Privacy Policy](#)

This website is an independent publication and is neither affiliated with nor endorsed by any of the trademark owners. The "Bluetooth®" word mark and logos are registered trademarks owned by Bluetooth SIG, Inc. The "Wi-Fi®" word mark and logos are registered trademarks owned by the Wi-Fi Alliance. Any use of these marks on this website does not imply any affiliation with or endorsement.