



PHILIPS 27M2N8800 Computer Monitor



Contents

- [1 Contents](#)
- [2 Installation](#)
- [3 Customer Support](#)
- [4 Documents / Resources](#)
 - [4.1 References](#)
- [5 Related Posts](#)

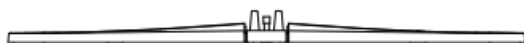
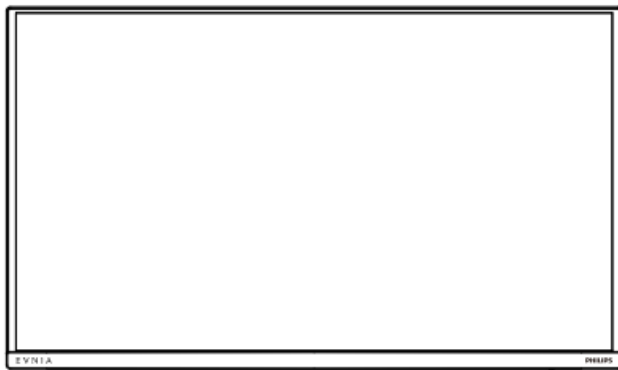


Contents

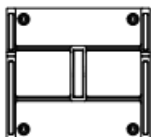
The images shown are for illustrative purposes only.

Actual product and accessory may vary by country or regions. Actual product and accessory shall prevail in kind.

- User Guide



- VESA Bracket



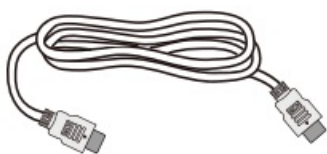
- Screw M4 x 4



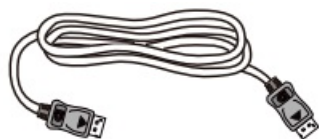
- Power



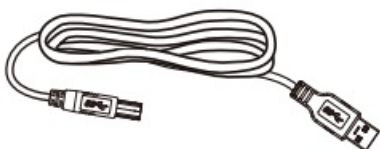
- HDMI



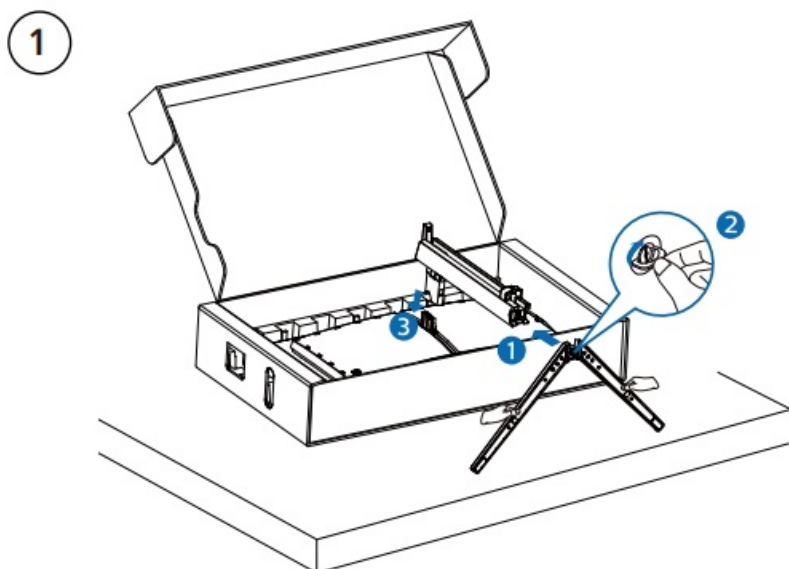
- DP



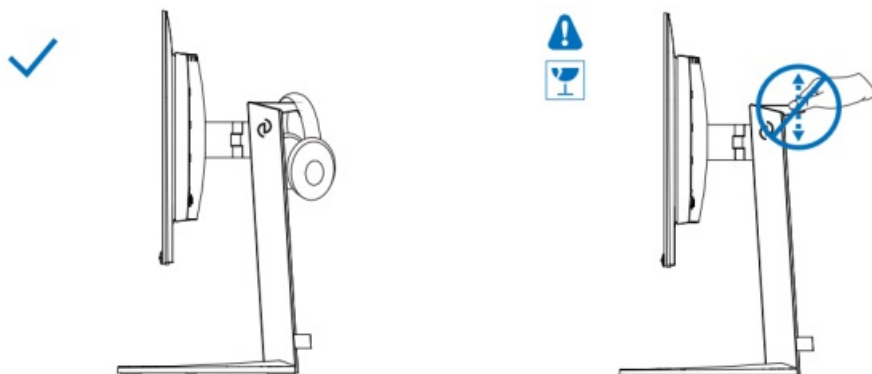
- USB A-B



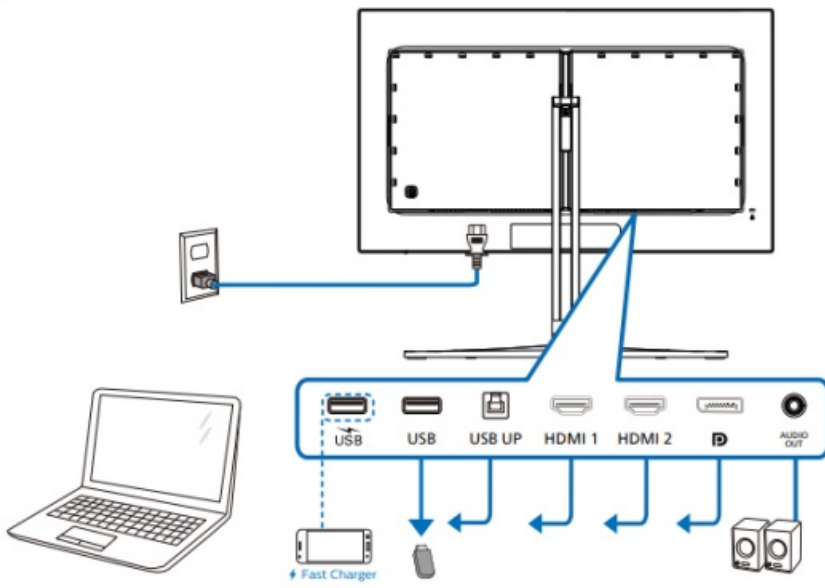
Instillation



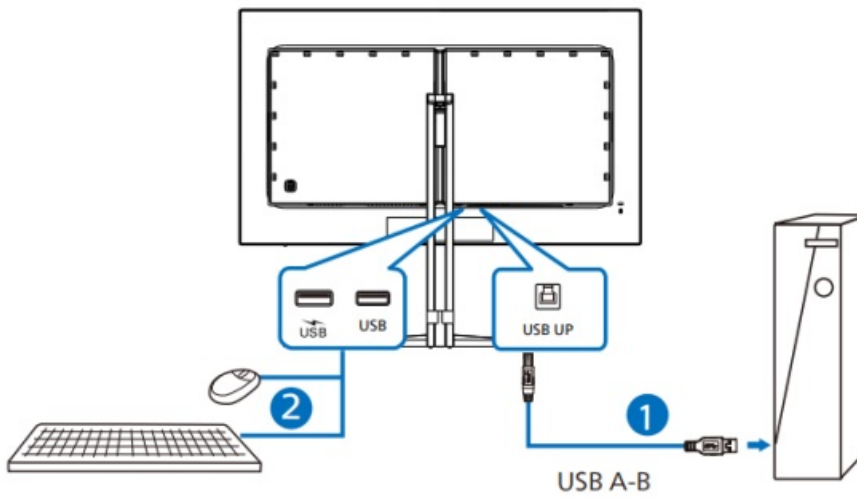
⚠ CAUTION: Place the monitor face down on a smooth surface.
Pay attention not to scratch or damage the screen.



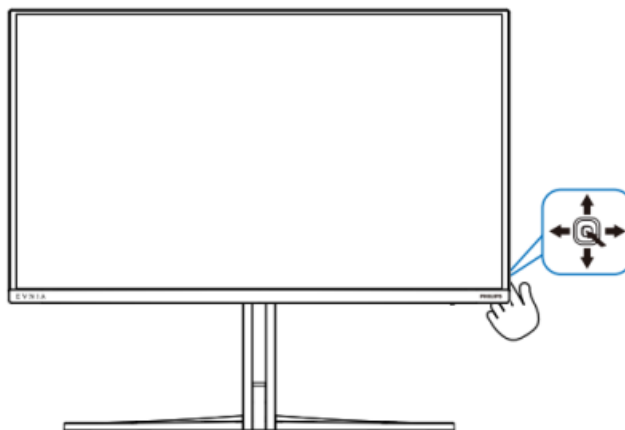
2

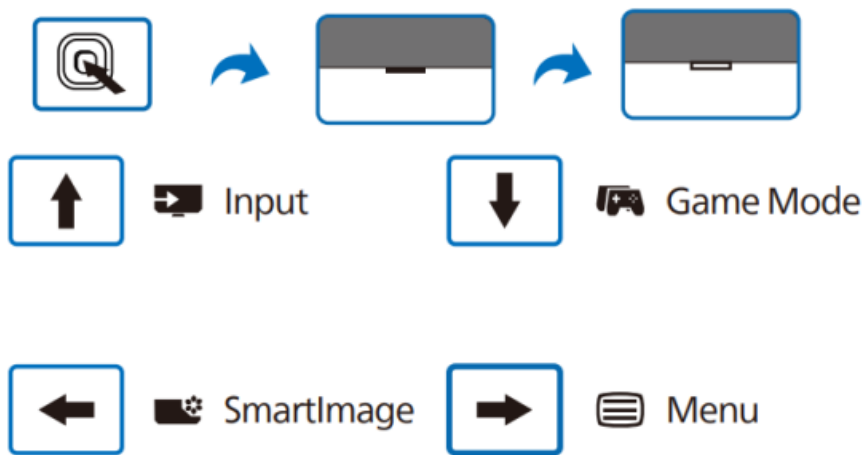


USB hub

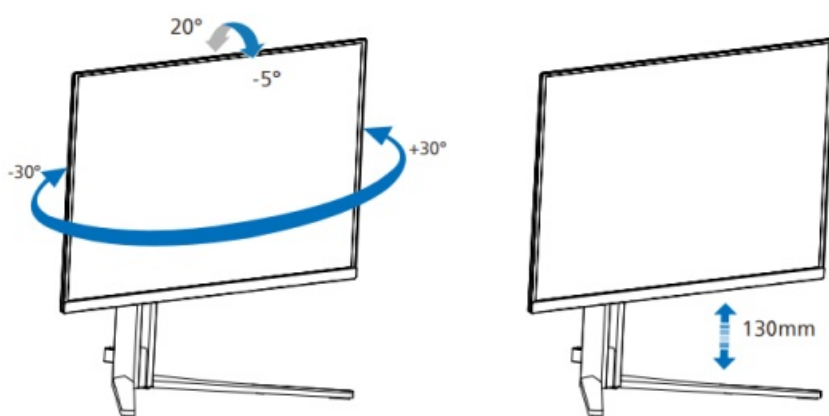


3





4



5




PIP



PBP




<div>Multi View</div> 	SUB SOURCE POSSIBILITY (XI)			
	Inputs	HDMI 1	HDMI 2	DisplayPort
MAIN SOURCE (xI)	HDMI 1	•	•	•
	HDMI 2	•	•	•
	DisplayPort	•	•	•


Adjust your settings with the EVNIA Precision Center Software




Register your product and get support at www.philips.com/support




FAQ



PRECISION CENTE
R



User Manual



Customer Support

Register your product and get support at www.philips.com/welcome

Version: 27M2N8800Q1T

2025 © TOP Victory Investments Ltd. All rights reserved.

This product has been manufactured by and is sold under the responsibility of Top Victory Investments Ltd., and Top Victory Investments Ltd. is the warrantor in relation to this product.

Philips and the Philips Shield Emblem are registered trademarks of Koninklijke Philips N.V. and are used under license.

Speciation’s are subject to change without notice.



The terms HDMI, HDMI High-Density Multimedia Interface, HDMI Trade Dress and the HDMI Logos are

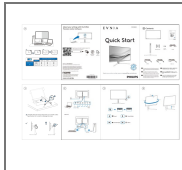
trademarks or registered trademarks of HDMI Licensing Administrator, Inc.

www.evnia.philips



EVNIA PHILIPS

Documents / Resources



[PHILIPS 27M2N8800 Computer Monitor \[pdf\]](#) User Guide

27M2N8800-69, 27M2N8800Q1T, 27M2N8800 Computer Monitor, 27M2N8800, Computer Monitor, Monitor

References

- [Philips Customer Service Support - Home | Philips](#)
- [Product registration | Philips](#)
- [User Manual](#)

[Manuals+.](#) [Privacy Policy](#) | [@manuals.plus](#) | [YouTube](#)

This website is an independent publication and is neither affiliated with nor endorsed by any of the trademark owners. The "Bluetooth®" word mark and logos are registered trademarks owned by Bluetooth SIG, Inc. The "Wi-Fi®" word mark and logos are registered trademarks owned by the Wi-Fi Alliance. Any use of these marks on this website does not imply any affiliation with or endorsement.