



EVNIA PHILIPS

27M2N3830F

Quick Start



Contents [[hide](#)]

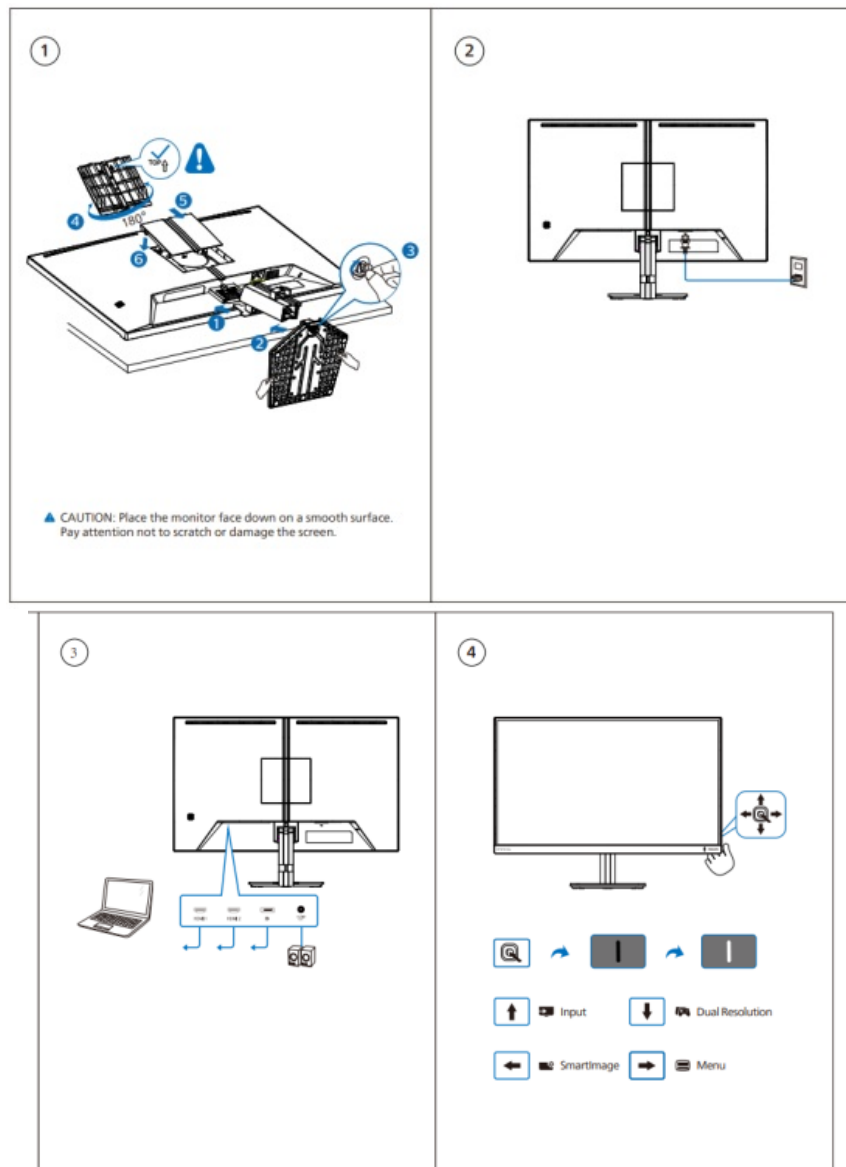
[1 27M2N3500F Computer Monitor](#)

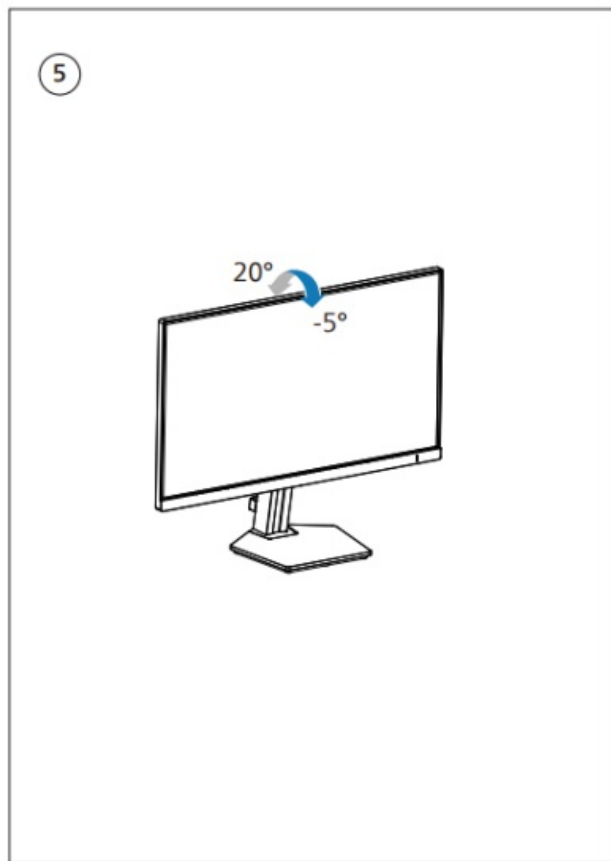
[2 Contents](#)

[3 Documents / Resources](#)

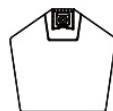
[3.1 References](#)

27M2N3500F Computer Monitor





Contents



Power

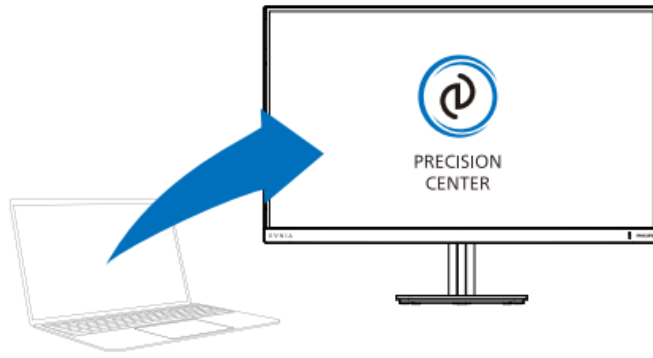


DP

The images shown are for illustrative purposes only.

Actual product and accessory may vary by country or regions. Actual product and accessory shall prevail in kind.

Adjust your settings with the EVNIA Precision Center Software



FAQ



PRECISION
CENTER



User
Manual

Register your product and get support at www.philips.com/support

Version: 27M2N5830TNB1

2024© TOP Victory Investments Ltd. All rights reserved.

This product has been manufactured by and is sold under the responsibility of Top Victory Investments Ltd., and Top Victory Investments Ltd. is the warrantor in relation to this product. Philips and the Philips Shield Emblem are registered trademarks of Koninklijke Philips N.V. and are used under license.

Specifications are subject to change without notice.

HDMI®

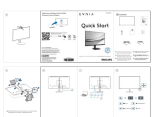
The terms HDMI, HDMI High-Definition Multimedia Interface, HDMI Trade Dress and the HDMI Logos are trademarks or registered trademarks of HDMI Licensing Administrator, Inc. www.evnia.philips

Printed in China



5601-274Y-0114

Documents / Resources



[PHILIPS 27M2N3500F Computer Monitor \[pdf\]](#) User Guide

27M2N3830F-93, 27M2N3500F, 27M2N3500F Computer Monitor, 27M2N3500F, Computer Monitor, Monitor

References

- [User Manual](#)

💎 27M2N3500F, 27M2N3500F Computer Monitor, 27M2N3830F-93, Computer Monitor, Monitor,

📁 Philips Philips

Leave a comment

Your email address will not be published. Required fields are marked *

Comment *

Name

Email

Website

☐ Save my name, email, and website in this browser for the next time I comment.

Post Comment

Search:

e.g. whirlpool wrf535swhz

Search

[Manuals+](#) | [Upload](#) | [Deep Search](#) | [Privacy Policy](#) | [@manuals.plus](#) | [YouTube](#)

This website is an independent publication and is neither affiliated with nor endorsed by any of the trademark owners. The "Bluetooth®" word mark and logos

are registered trademarks owned by Bluetooth SIG, Inc. The "Wi-Fi®" word mark and logos are registered trademarks owned by the Wi-Fi Alliance. Any use of these marks on this website does not imply any affiliation with or endorsement.