

PHILIPS

**27M2N3200L
Computer
Monitor**



PHILIPS 27M2N3200L Computer Monitor Owner's Manual

[Home](#) » [Philips](#) » PHILIPS 27M2N3200L Computer Monitor Owner's Manual 

Contents

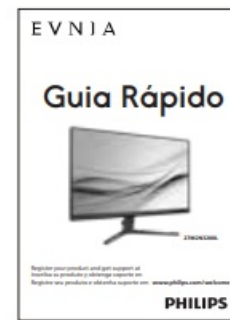
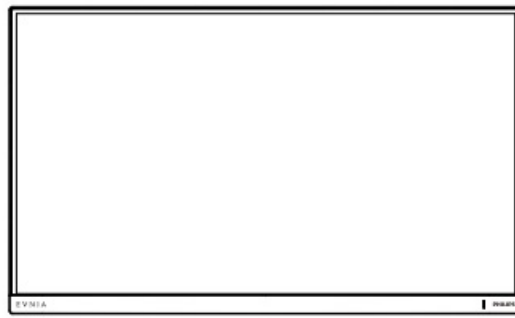
- [1 PHILIPS 27M2N3200L Computer Monitor](#)
- [2 Contents](#)
- [3 INSTALLATION](#)
- [4 FAQ](#)
- [5 Documents / Resources](#)
 - [5.1 References](#)

PHILIPS

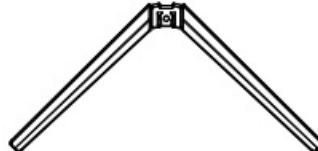
PHILIPS 27M2N3200L Computer Monitor



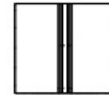
Contents



Stand
Suporte



Base



Cover
Tampa



Power cable
Cabo de força



*
EN HDMI (optional)
ES HDMI (opcional)
PO HDMI (opcional)



*
EN DP (optional)
ES DP (opcional)
PO DP (opcional)

*Different according to region
Display design may differ from that illustrated



FAQ



Software



Manual
do Usuário

Version: 27M2N3200LQ1T

2024 © TOP Victory Investments Ltd. All rights reserved.

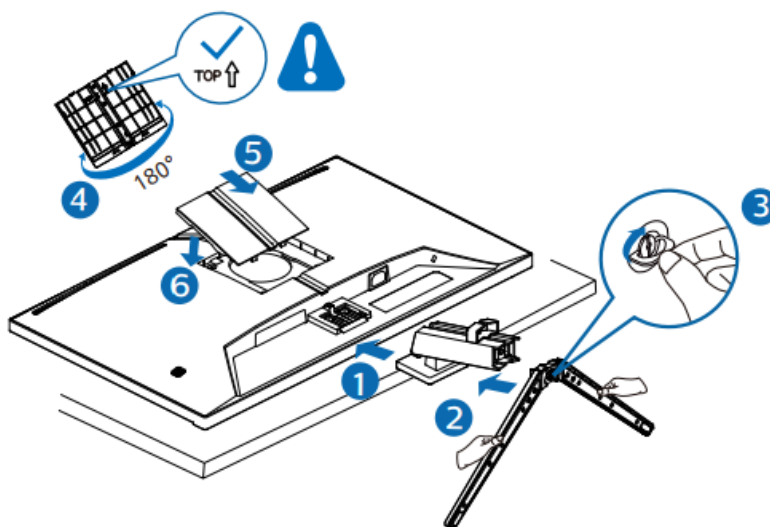
This product has been manufactured by and is sold under the responsibility of Top Victory Investments Ltd., and Top Victory Investments Ltd. is the warrantor in relation to this product. Philips and the Philips Shield Emblem are registered trademarks of Koninklijke Philips N.V. and are used under license. Specifications are subject to change without notice.

HDMI® The terms HDMI, HDMI High-Definition Multimedia Interface, HDMI Trade Dress and HDMI Logos are trademarks or registered trademarks of HDMI Licensing Administrator, Inc

www.evnia.philips

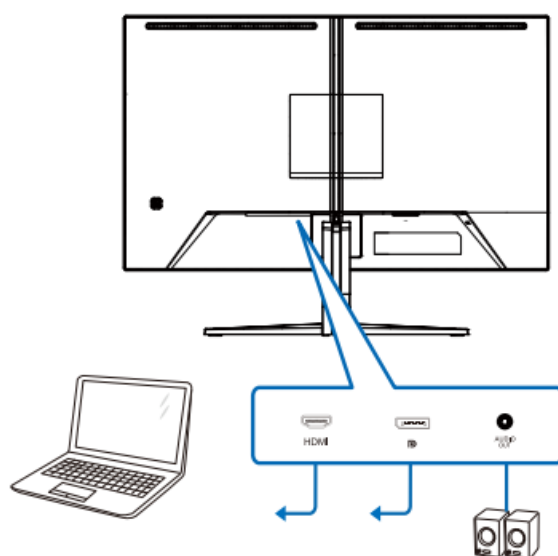
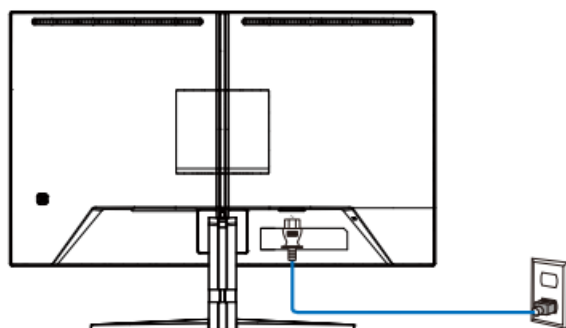
INSTALLATION

1

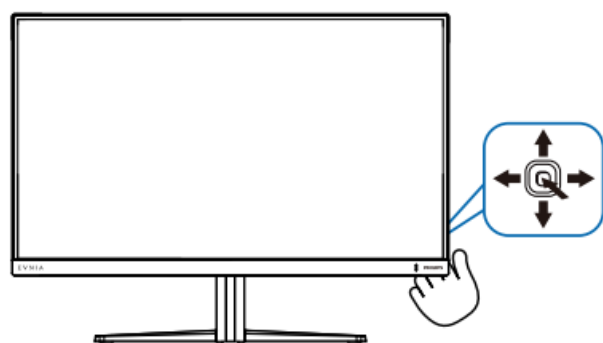


CAUTION: Place the monitor face down on a smooth surface. Pay attention not to scratch or damage the screen.

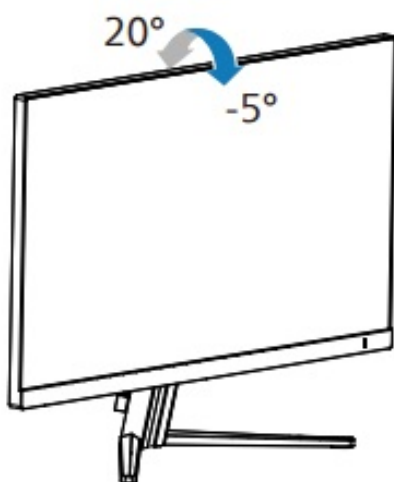
2



3



4



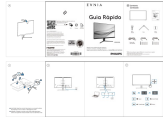
- **Q: How do I register my product for support?**

- A: You can register your product and get support at www.philips.com/support or www.philips.com/welcome.

- **Q: What do I do if I accidentally scratch the screen?**

- A: If you accidentally scratch the screen, please contact customer support for assistance.

Documents / Resources

	<p>PHILIPS 27M2N3200L Computer Monitor [pdf] Owner's Manual 27M2N3200L Computer Monitor, 27M2N3200L, Computer Monitor, Monitor</p>
---	---

References

-  [Login](#)
- [User Manual](#)

Manuals+, [Privacy Policy](#)

This website is an independent publication and is neither affiliated with nor endorsed by any of the trademark owners. The "Bluetooth®" word mark and logos are registered trademarks owned by Bluetooth SIG, Inc. The "Wi-Fi®" word mark and logos are registered trademarks owned by the Wi-Fi Alliance. Any use of these marks on this website does not imply any affiliation with or endorsement.