

**PHILIPS
27M2N3200FQ
-96 Computer
Monitor**



PHILIPS 27M2N3200FQ-96 Computer Monitor User Guide

[Home](#) » [Philips](#) » PHILIPS 27M2N3200FQ-96 Computer Monitor User Guide 

Contents

- [1 PHILIPS 27M2N3200FQ-96 Computer Monitor](#)
- [2 Contents](#)
- [3 Specifications](#)
- [4 Product Information](#)
- [5 Setting Up the Monitor](#)
- [6 Installation](#)
- [7 Adjusting Settings with EVNIA Precision Center Software](#)
- [8 FAQs](#)
- [9 Documents / Resources](#)
 - [9.1 References](#)

PHILIPS

PHILIPS 27M2N3200FQ-96 Computer Monitor



Register your product and get support at www.philips.com/welcome.

Contents



Power



HDMI



DP

The images shown are for illustrative purposes only. Actual products and accessories may vary by country or region. Actual product and accessory shall prevail in kind.

Specifications

- Model: 27M2N3200FQ
- Manufacturer: Top Victory Investments Ltd.
- Trademark: Philips
- Interface: HDMI, DisplayPort (DP)

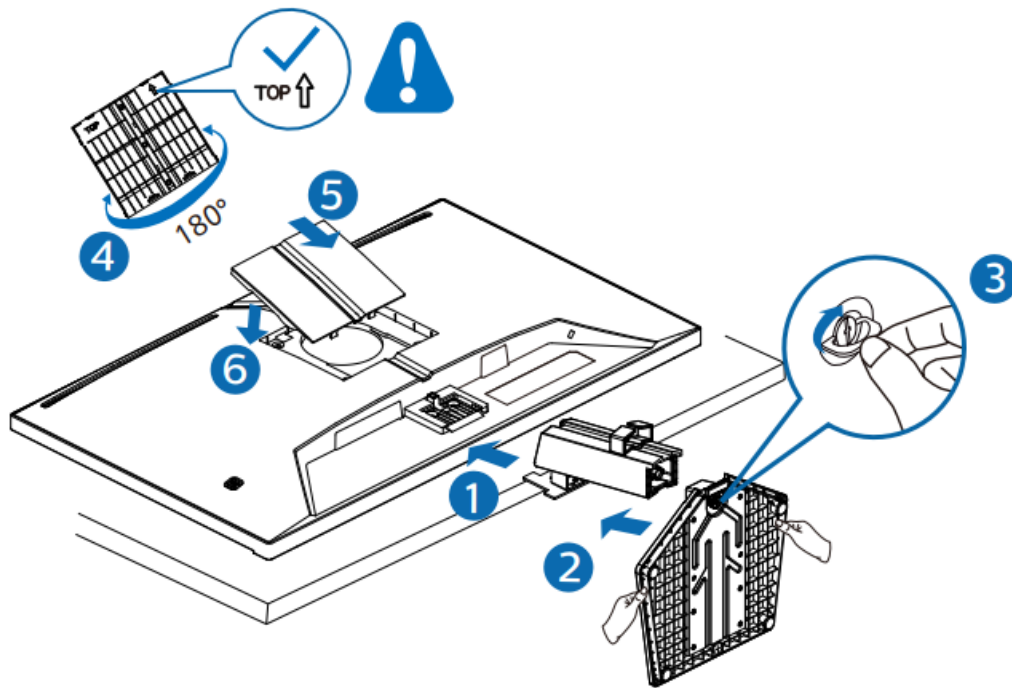
Product Information

The Philips Precision Center monitor, model 27M2N3200FQ, is a high-quality display designed for optimal viewing experiences. It features HDMI and DisplayPort interfaces for versatile connectivity options.

Setting Up the Monitor

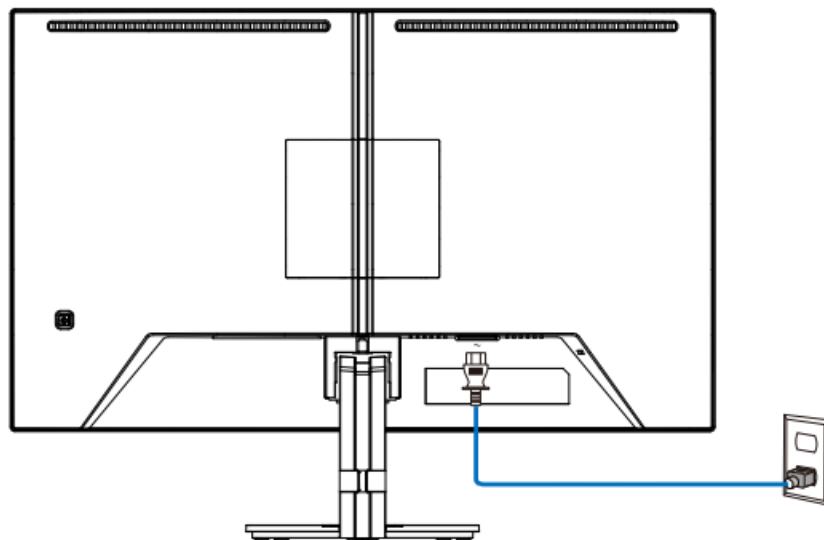
1. Place the monitor face down on a smooth surface to avoid scratching the screen.
2. Connect the monitor to your computer or other devices using the HDMI or DisplayPort cable.
3. Power on the monitor and your connected device.

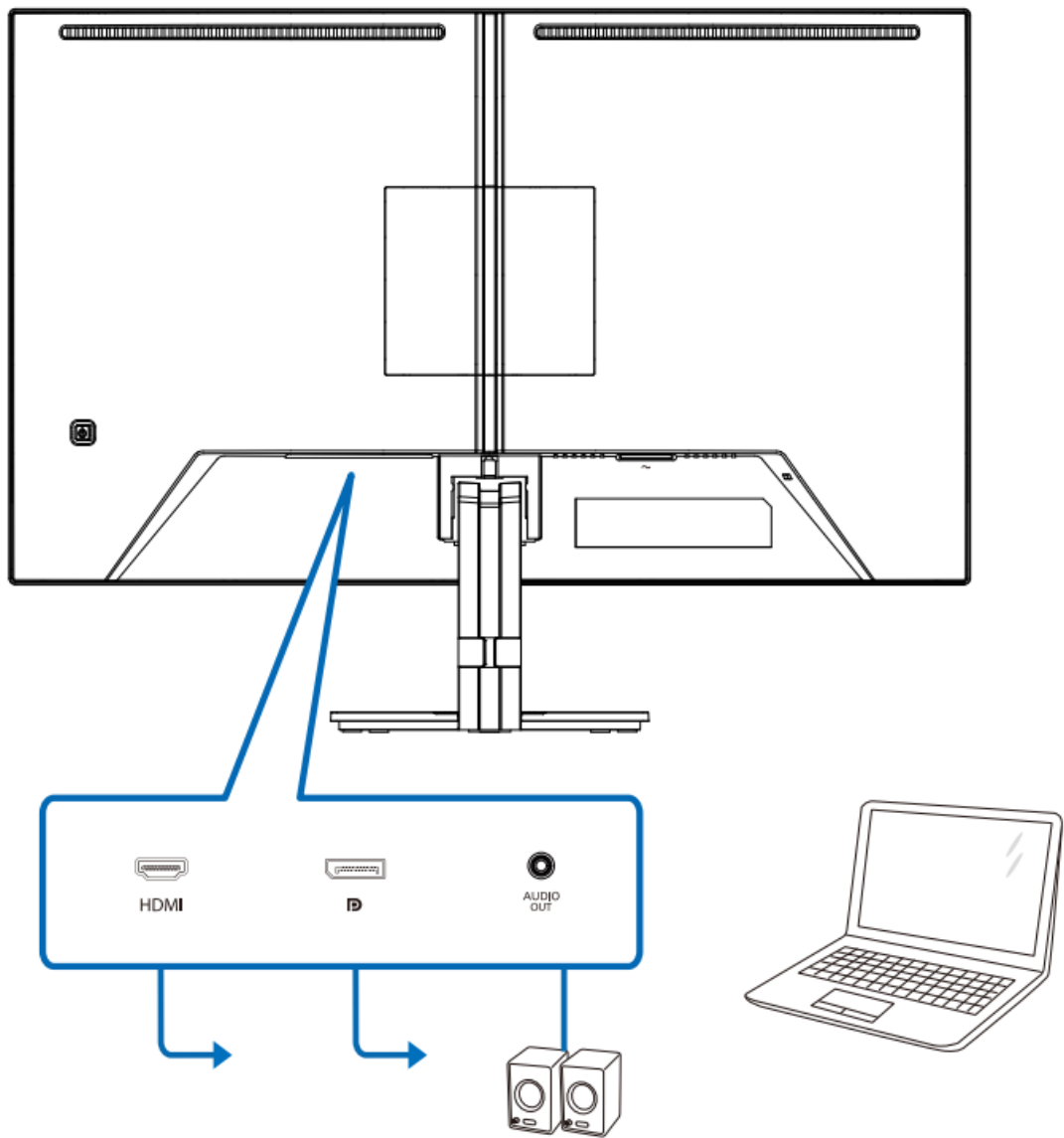
Installation

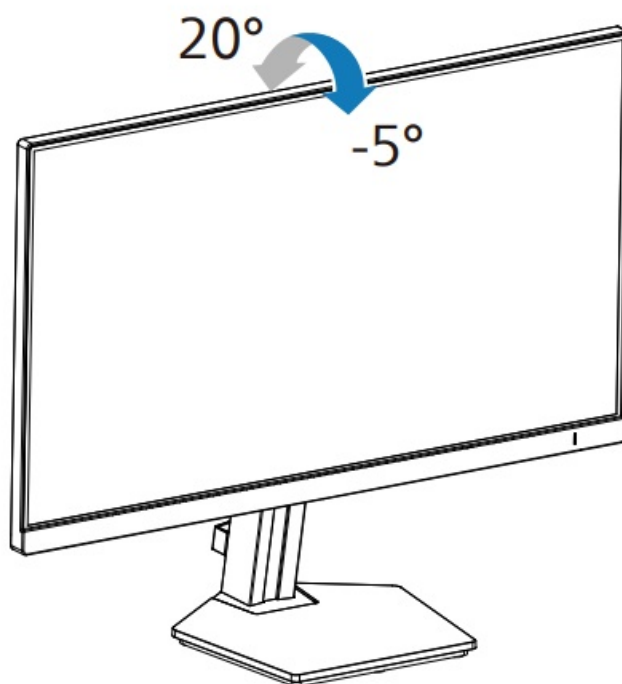
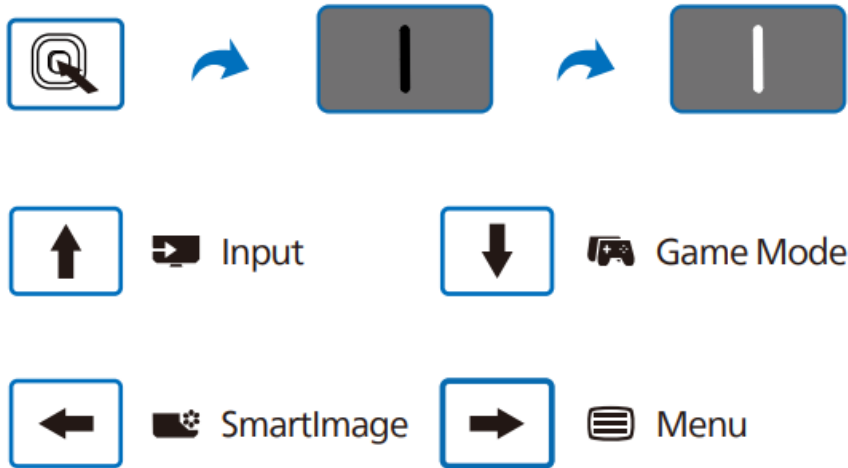
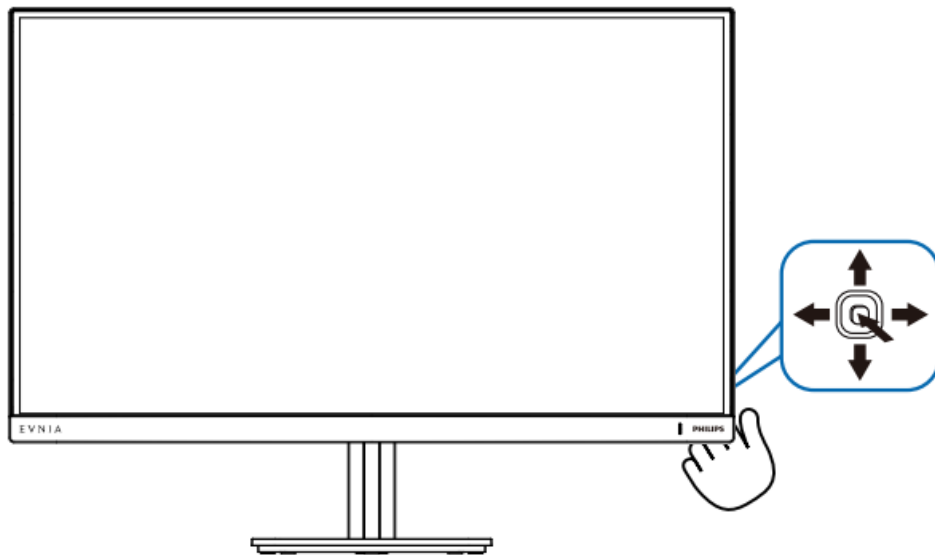


CAUTION

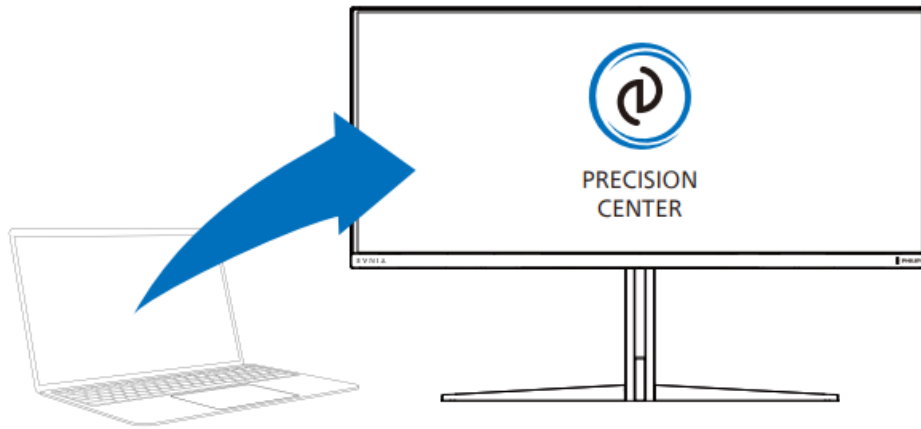
Place the monitor face down on a smooth surface. Pay attention not to scratch or damage the screen.







Adjust your settings with the EVNI.A
Precision Center Software



Register your product and get support at www.philips.com/support.



FAQ



PRECISION
CENTER



User
Manual

Adjusting Settings with EVNIA Precision Center Software

To adjust settings using the EVNIA Precision Center Software:

1. Download and install the software from www.evia.philips.
2. Launch the software and follow the on-screen instructions to customize your display settings.

FAQs

Q: Can I use this monitor for gaming?

A: Yes, the monitor has a Game Mode menu that optimizes settings for gaming experiences.

Q: What should I do if the product varies from what is shown in the images?

A: The actual product and accessories may vary by country or region. Please refer to the product and accessories included with your purchase.

Version: 27M2N3200FQQ1T

2024 © TOP Victory Investments Ltd. All rights reserved. This product has been manufactured by and is sold under the responsibility of Top Victory Investments Ltd., and Top Victory Investments Ltd. is the warrantor in his

product.

Philips and the Philips Shield Emblem are registered trademarks of Koninklijke Philips N.V. and are used under license. Specifications are subject to change without notice.

HDMI The terms HDMI, HDMI High-Definition Multimedia.

Interface, HDMI Trade Dress, and HDMI Logos are trademarks or registered trademarks of HDMI. Licensing Administrator, Inc. www.evnia.philips





Printed in China
H41G78S581323A

Documents / Resources

	<p>PHILIPS 27M2N3200FQ-96 Computer Monitor [pdf] User Guide 27M2N3200FQ-96, 27M2N3200FQQ1T, 27M2N3200FQ-96 Computer Monitor, 27M2N3200FQ-96, Computer Monitor, Monitor</p>
--	---

References

-  [Philips Customer Service Support - Home | Philips](#)
-  [Product registration | Philips](#)
- [User Manual](#)

[Manuals+](#), [Privacy Policy](#)

This website is an independent publication and is neither affiliated with nor endorsed by any of the trademark owners. The "Bluetooth®" word mark and logos are registered trademarks owned by Bluetooth SIG, Inc. The "Wi-Fi®" word mark and logos are registered trademarks owned by the Wi-Fi Alliance. Any use of these marks on this website does not imply any affiliation with or endorsement.