



# PHILIPS 275S9 S Line Line Smart LED Display User Guide

[Home](#) » [Philips](#) » PHILIPS 275S9 S Line Line Smart LED Display User Guide 

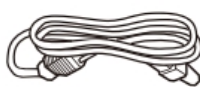
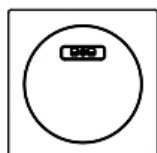
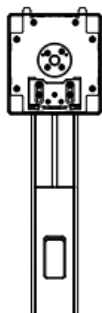
## PHILIPS 275S9 S Line Line Smart LED Display User Guide



### Contents

- [1 Package Content](#)
- [2 Inductions](#)
- [3 Documents / Resources](#)
  - [3.1 References](#)
- [4 Related Posts](#)

### Package Content



Power



\*HDMI

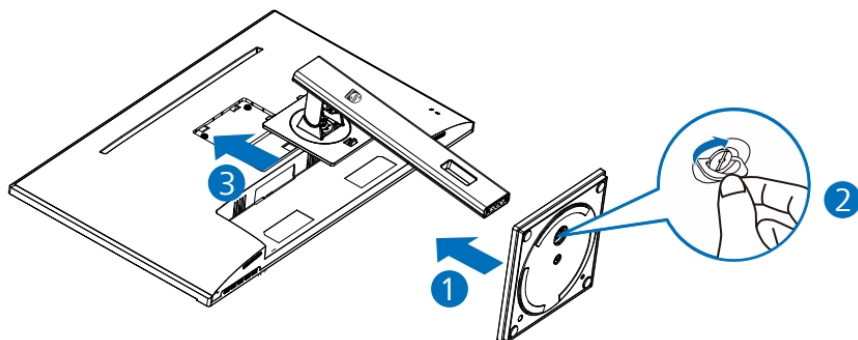


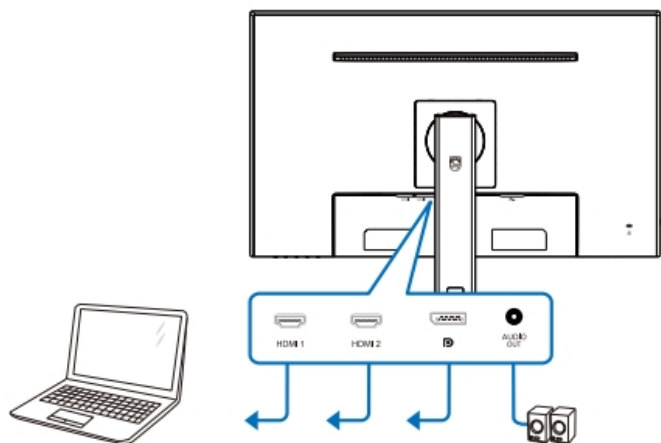
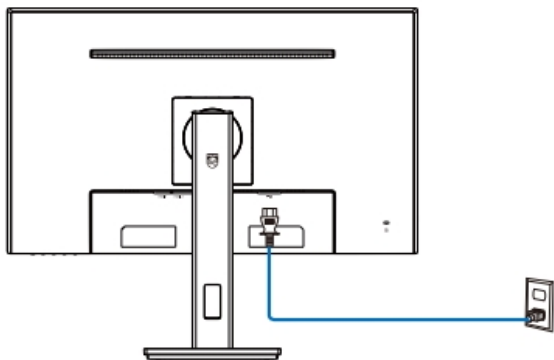
\*DP

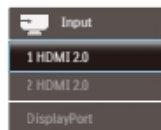
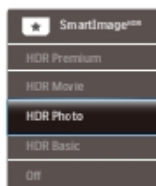
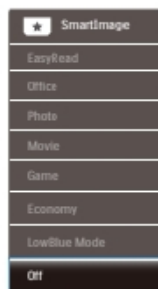
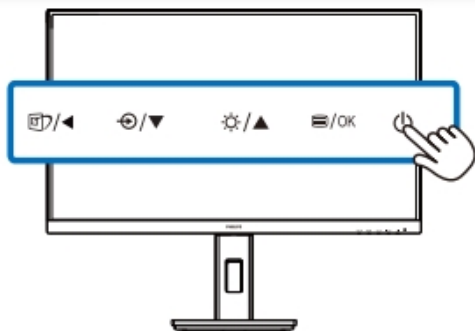
**\*Different according to region**

Display design may differ from that illustrated

## Inductions









LowBlue Mode	On	
	Off	✓
Input		
Picture		
Audio		
Color		
Language		
▼		



LowBlue Mode	On	
	Off	✓
Input		
Picture		
Audio		
Color		
Language		
▼		

Blue arrows indicate navigation between the 'LowBlue Mode' row and the 'Language' row.



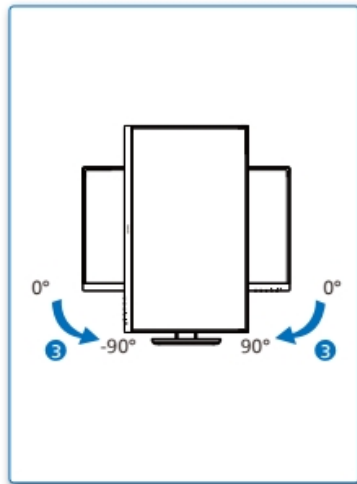
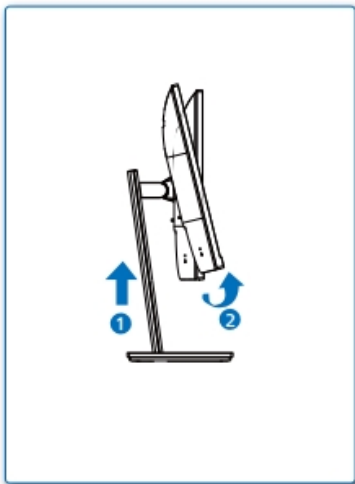
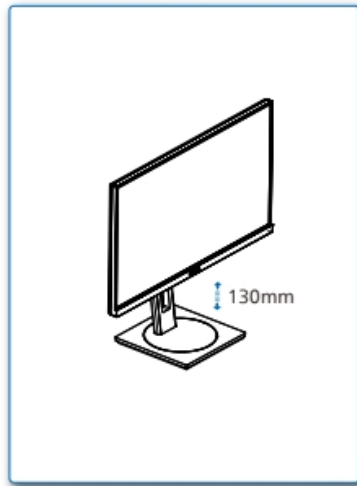
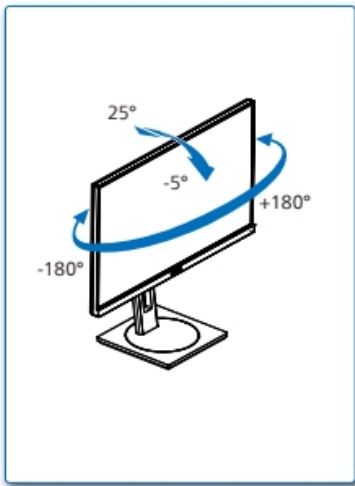
LowBlue Mode	On	
	Off	✓
Input		
Picture		
Audio		
Color		
Language		
▼		

A blue arrow points from the 'Picture' row to the 'LowBlue Mode' row.



LowBlue Mode	On	
	Off	✓
Input		
Picture		
Audio		
Color		
Language		
▼		

A blue arrow points from the 'Picture' row to the 'Input' row.



Register your product and get support at  
[www.philips.com/support](http://www.philips.com/support)



FAQ



Software SmartControl



User Manual



**Version:** M9275SQ1T

2022 © TOP Victory Investments Ltd. All rights reserved.

This product has been manufactured by and is sold under the responsibility of Top Victory Investments Ltd., and Top Victory Investments Ltd. is the warrantor in relation to this product. Philips and the Philips Shield Emblem are registered trademarks of Koninklijke Philips N.V. and are used under license.

Specifications are subject to change without notice.

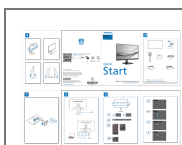
## HDMI®

The Adopted Trademarks HDMI, HDMI High Definition Multimedia Interface, and the HDMI Logo are trademarks or registered trademarks of HDMI Licensing Administrator, Inc. in the United States and other countries.

[www.philips.com](http://www.philips.com)



## Documents / Resources



**[PHILIPS 275S9 S Line Line Smart LED Display](#)** [pdf] User Guide

275S9 S Line, 275S9, S Line, 275S9 S Line Line Smart LED Display, Line Smart LED Display, Smart LED Display, LED Display, Display, LED

## References

- [Philips - United States | Philips](#)
- [Philips Customer Service Support - Home | Philips](#)
- [Product registration | Philips](#)