



PHILIPS 275S1 S Line LCD Monitor Instruction Manual

[Home](#) » [Philips](#) » PHILIPS 275S1 S Line LCD Monitor Instruction Manual 

PHILIPS

S Line 275S1



Quick Start
Register your product and get support at
www.philips.com/welcome

Contents

1 Line LCD Monitor

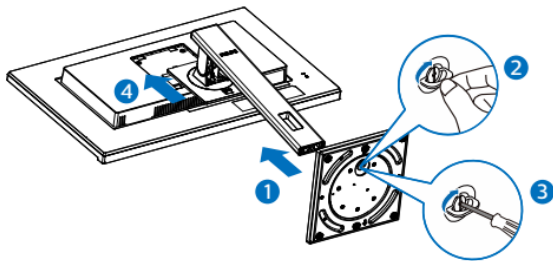
2 Documents / Resources

2.1 References

3 Related Posts

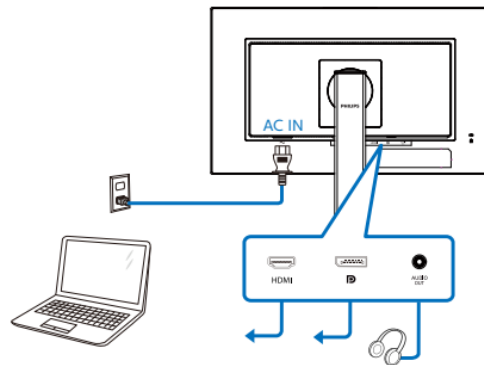
Line LCD Monitor

1

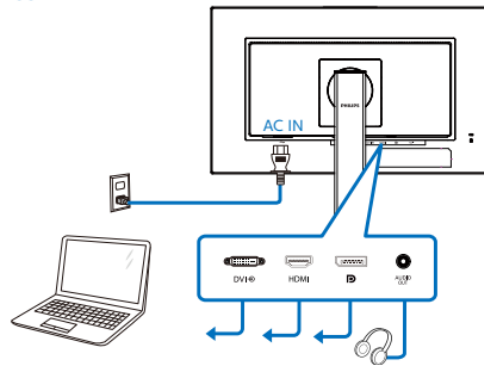


2

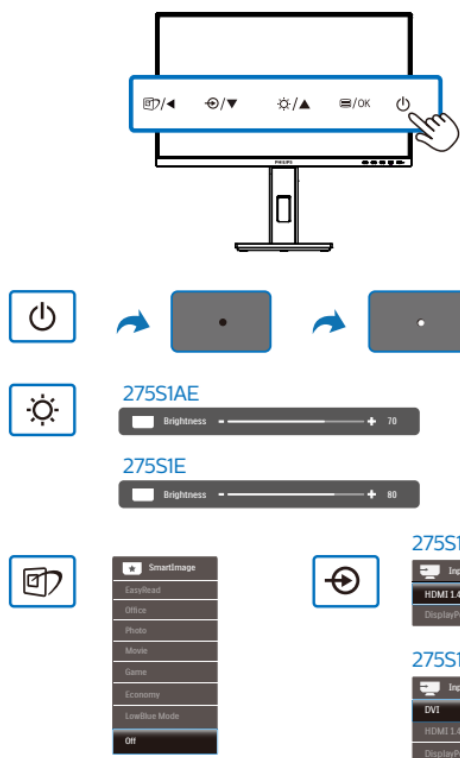
275S1E



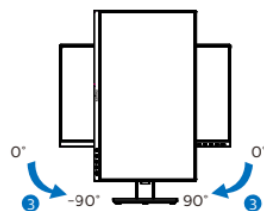
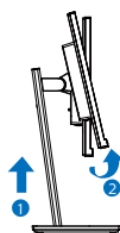
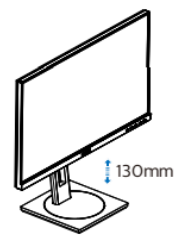
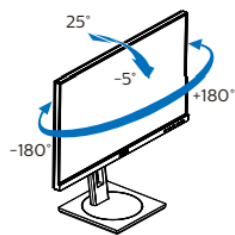
275S1AE

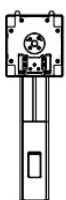
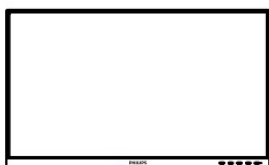


3



4





Power



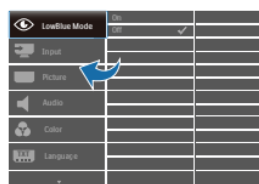
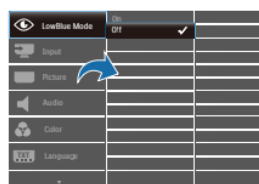
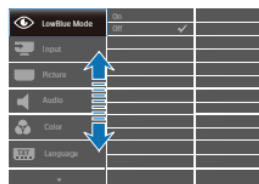
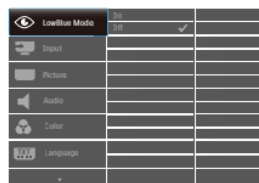
* DVI(275S1AE)



*HDMI



*DP



Register your product and get support at
www.philips.com/support



<http://www.philips.com/support>



FAQ



Software
SmartControl



User
Manual

2020 © TOP Victory Investments Ltd. All rights reserved.

Version: M10275SQ1T

This product has been manufactured by and is sold under the responsibility of Top Victory Investments Ltd., and Top Victory Investments Ltd. is the warrantor in relation to this product. Philips and the Philips Shield Emblem have registered trademarks of Koninklijke Philips N.V. and are used under license.

Specifications are subject to change without notice.

The terms HDMI, HDMI High-Definition Multimedia

Interface and the HDMI Logo are trademarks or registered trademarks of HDMI Licensing Administrator, Inc.

www.philips.com

275S1AE

Energy Labelling



<https://eprel.ec.europa.eu/qr/413347>



Printed in China




H41G78S281349D

Documents / Resources



[PHILIPS 275S1 S Line LCD Monitor](#) [pdf] Instruction Manual
275S1, S Line, LCD Monitor, 275S1 S Line LCD Monitor, S Line LCD Monitor, Monitor

References

-  [Philips - United States | Philips](#)
-  [Philips Customer Service Support - Home | Philips](#)
-  [Product registration | Philips](#)

Manuals+.