




# PHILIPS 272S1 S Line LCD Monitor User Guide

[Home](#) » [Philips](#) » PHILIPS 272S1 S Line LCD Monitor User Guide 

## Contents

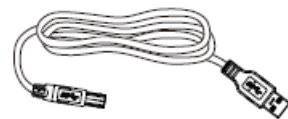
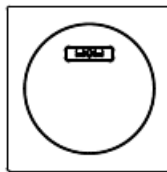
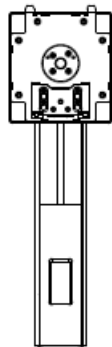
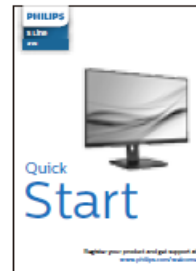
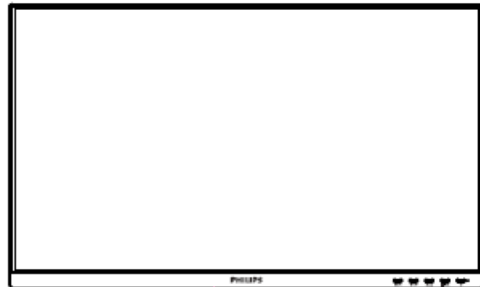
- [1 PHILIPS 272S1 S Line LCD Monitor](#)
- [2 What's In The Box](#)
- [3 Installation Instruction](#)
- [4 How To Use](#)
- [5 Button Functions](#)
- [6 Dimensions](#)
- [7 Documents / Resources](#)
  - [7.1 References](#)
- [8 Related Posts](#)

# PHILIPS

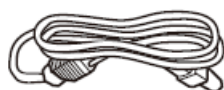
**PHILIPS 272S1 S Line LCD Monitor**



## What's In The Box



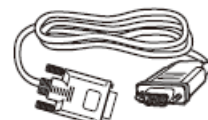
\*USB A-B



Power



\*DP



\*VGA



\*Audio



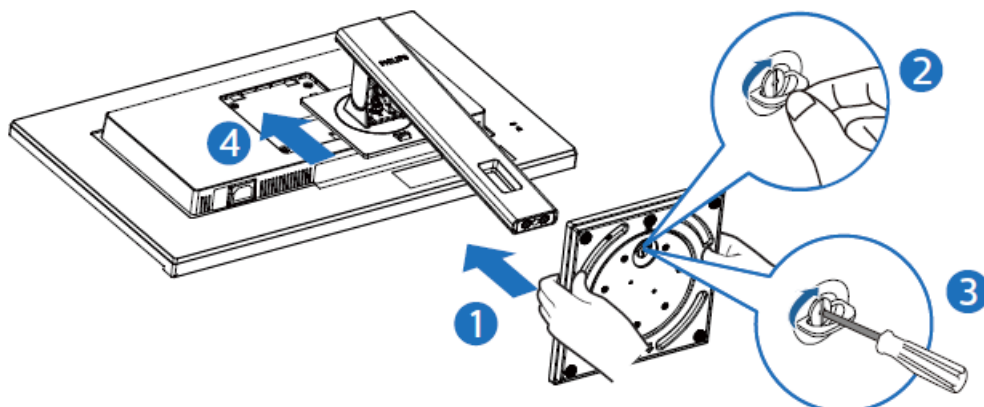
\*DVI



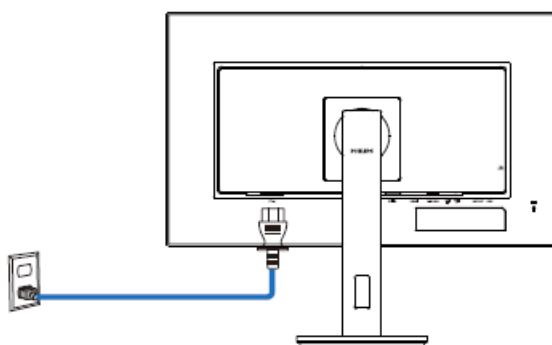
\*HDMI

## Installation Instruction

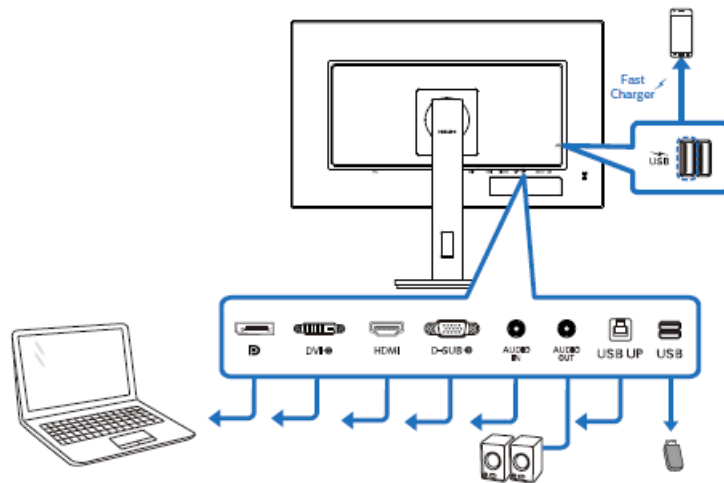
1



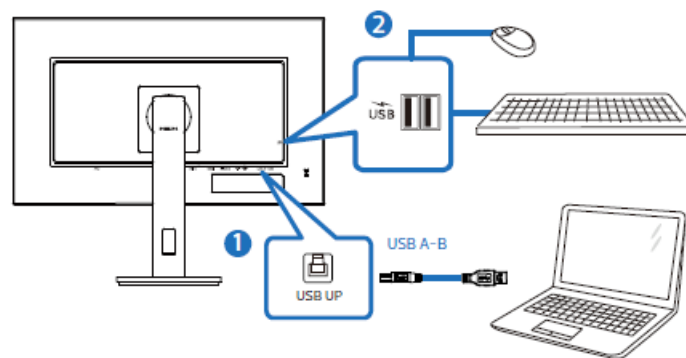
2



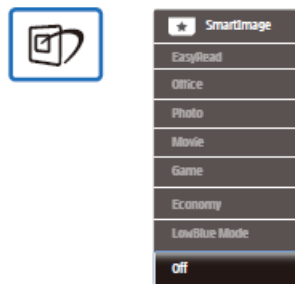
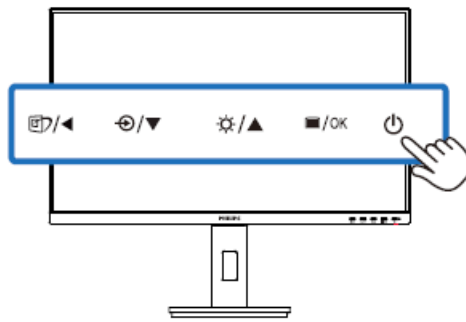
## How To Use



### USB hub



## Button Functions





LowBlue Mode	On	
	Off	✓
Input		
Picture		
Audio		
Color		
Language		
▼		



LowBlue Mode	On	
	Off	✓
Input		
Picture		
Audio		
Color		
Language		
▼		

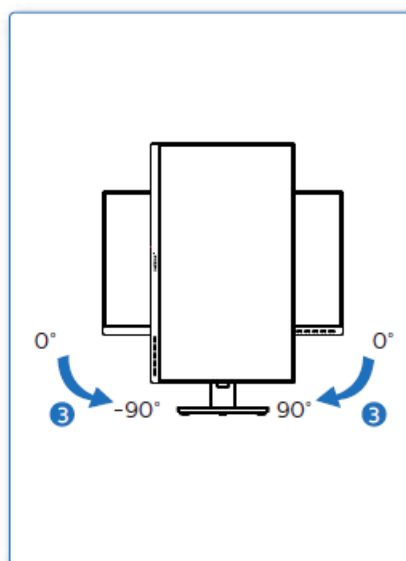
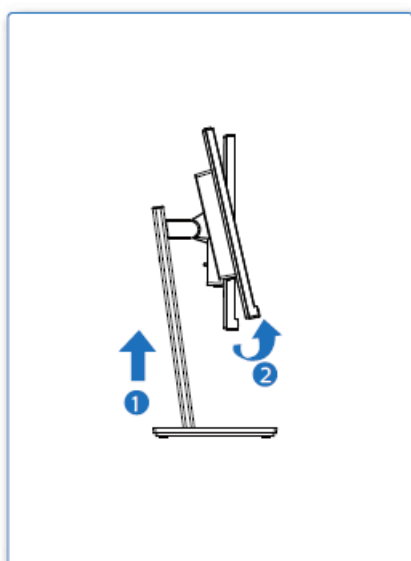
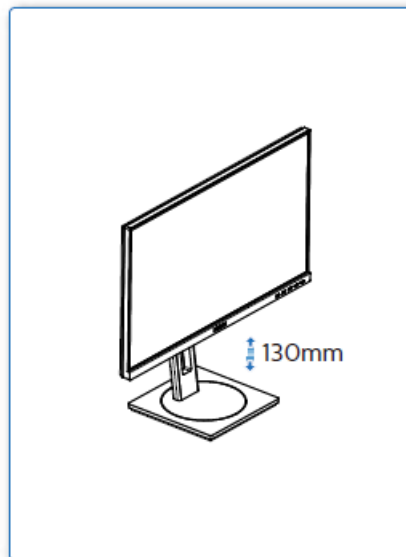
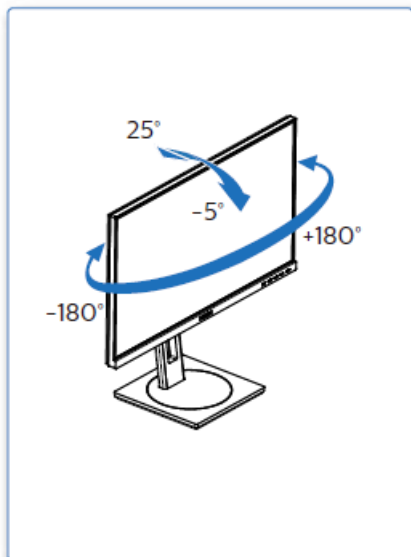


LowBlue Mode	On	
	Off	✓
Input		
Picture		
Audio		
Color		
Language		
▼		



LowBlue Mode	On	
	Off	✓
Input		
Picture		
Audio		
Color		
Language		
▼		

## Dimensions



## Support

Register your product and get support at [www.philips.com/support](http://www.philips.com/support)



FAQ



Software  
SmartControl



User  
Manual

**Version: M10272SMQ1T**



2021 © TOP Victory Investments Ltd. All rights reserved.

This product has been manufactured by and is sold under the responsibility of Top Victory Investments Ltd., and Top Victory Investments Ltd. is the warrantor in relation to this product. Philips and the Philips Shield Emblem are registered trademarks of Koninklijke Philips N.V. and are used under license.

Specifications are subject to change without notice.

The terms HDMI, HDMI High-Definition Multimedia Interface, and the HDMI Logo are trademarks or registered trademarks of HDMI Licensing Administrator, Inc.  
[www.philips.com](http://www.philips.com)

Documents / Resources

	<p><b><a href="#">PHILIPS 272S1 S Line LCD Monitor</a></b> [pdf] User Guide 272S1, S Line, S Line LCD Monitor, 272S1 S Line LCD Monitor, LCD Monitor, Monitor</p>
	<p><b><a href="#">PHILIPS 272S1 S Line LCD Monitor</a></b> [pdf] User Guide 272S1, S Line LCD Monitor, 272S1 S Line LCD Monitor, LCD Monitor, Monitor</p>

References

-  [Philips - United States | Philips](#)
-  [Philips Customer Service Support - Home | Philips](#)
-  [Product registration | Philips](#)