

PHILIPS
271V8LAB3
Computer Monitor



PHILIPS 271V8LAB3 Computer Monitor User Guide

[Home](#) » [Philips](#) » PHILIPS 271V8LAB3 Computer Monitor User Guide 

Contents

- [1 PHILIPS 271V8LAB3 Computer Monitor](#)
- [2 Product Information](#)
- [3 Specifications](#)
- [4 Product Usage Instructions](#)
- [5 What's In The Box](#)
- [6 Installation Instructions](#)
- [7 FAQ](#)
- [8 Documents / Resources](#)
 - [8.1 References](#)

PHILIPS

PHILIPS 271V8LAB3 Computer Monitor



Product Information

- This product is a monitor manufactured by Top Victory Investments Ltd. and sold under the responsibility of Top Victory Investments Ltd.
- It features HDMI, VGA, and Audio connectivity options.

Specifications

- **Model:** 271V8LAB3
- **Software Version:** M827xVQ1T3
- **Connectivity:** HDMI, VGA, Audio
- **Manufacturer:** Top Victory Investments Ltd.
- **Trademark:** Philips

Product Usage Instructions

Setting Up the Monitor

- Unbox the monitor and place it on a stable surface.
- Connect the power cable to the AC IN port on the monitor.
- If using HDMI, VGA, or Audio cables, connect them to the corresponding ports on the monitor.
- Plug the other ends of the cables into your computer or multimedia device.
- Power on the monitor using the power button.

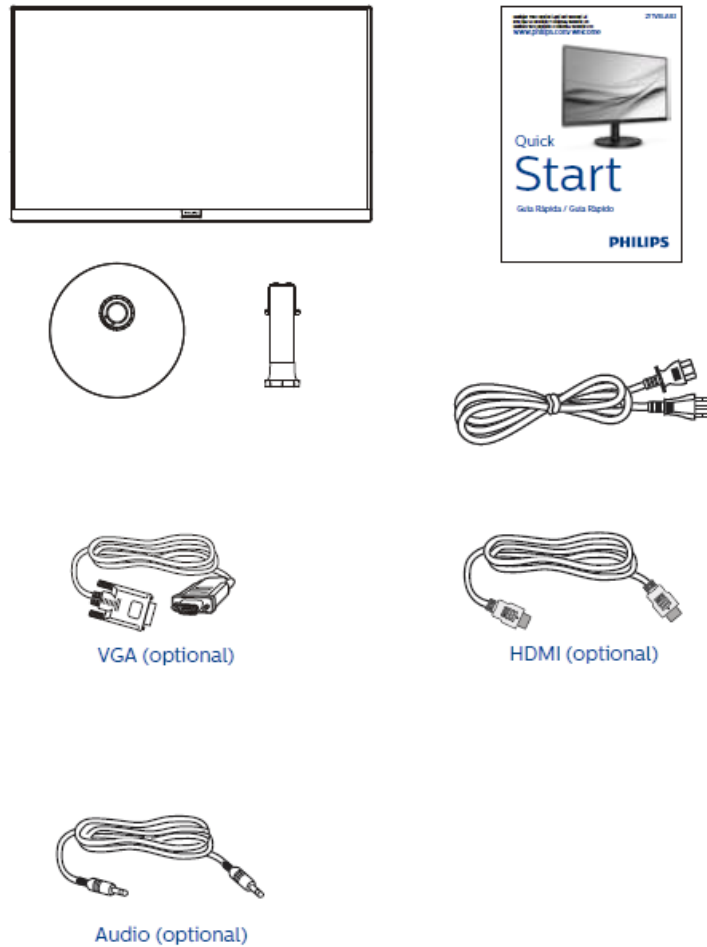
Adjusting Settings

- To adjust settings such as brightness, contrast, and color, use the menu buttons located on the monitor.
- Navigate through the menu options using the buttons and make changes as needed.

Switching Inputs

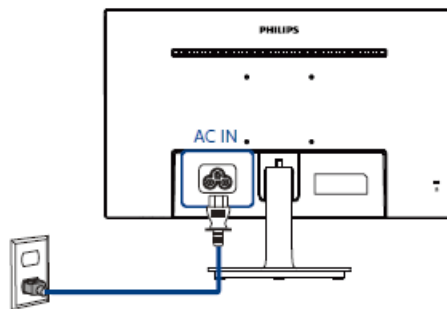
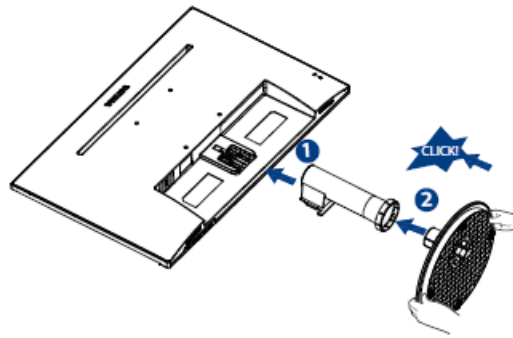
- If you have multiple devices connected to the monitor, you can switch between inputs using the input selection button on the monitor.
- Cycle through the available inputs until you reach the desired one.

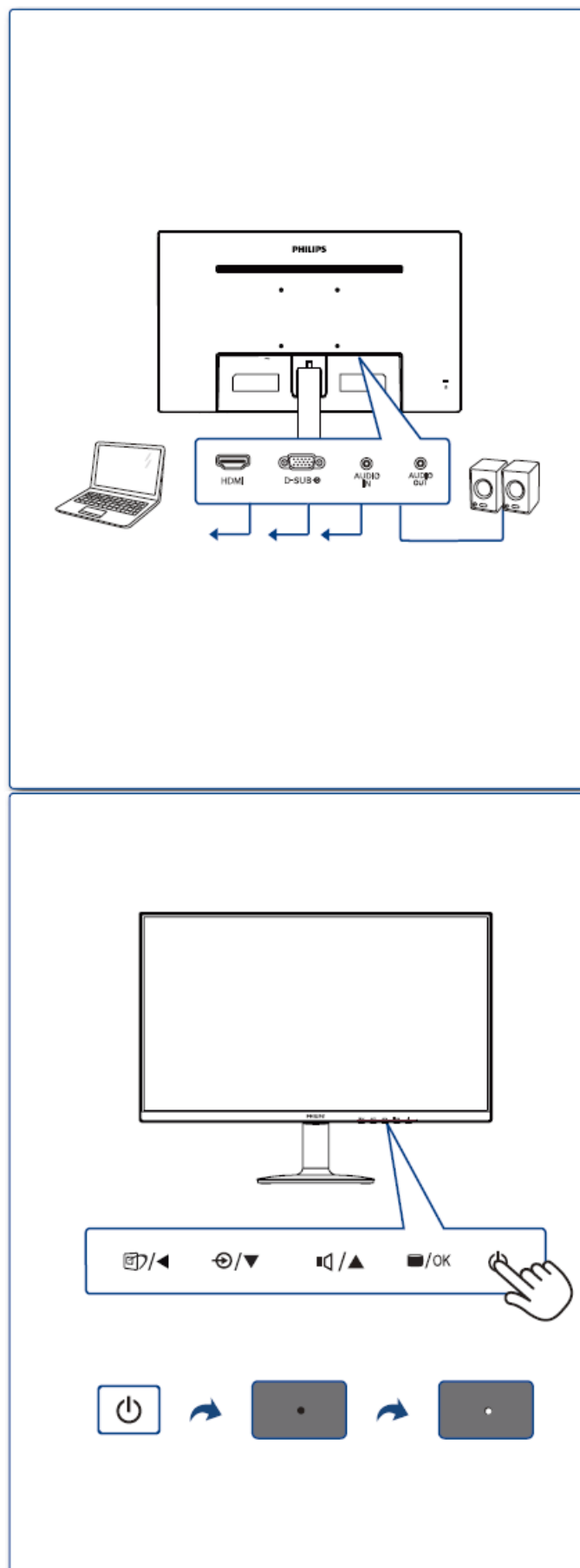
What's In The Box



Display design may differ from that illustrated

Installation Instructions





- Registre seu produto e obtenha suporte em: www.philips.com/support

Version: M827xVQ1T3

This product has been manufactured by and is sold under the responsibility of Top Victory Investments Ltd., and Top Victory Investments Ltd. is the warrantor concerning this product.
Philips and the Philips Shield Emblem are registered trademarks of Koninklijke Philips N.V. and are used under license.

Specifications are subject to change without notice.



2024 © TOP Victory Investments Ltd. Todos os direitos reservados.

The terms HDMI, HDMI High-Definition Multimedia Interface, HDMI Trade Dress, and the HDMI Logos are trademarks or registered trademarks of HDMI Licensing Administrator, Inc. www.philips.com

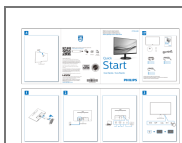


H41G78S581313A

FAQ

- **Q: How do I register my product for support?**
 - **A:** You can register your product and get support by visiting www.philips.com/welcome or www.philips.com/support.
- **Q: Are there different language options available for setup?**
 - **A:** Yes, the monitor supports multiple language options for setup, including English (EN), Spanish (ES), and Portuguese (PO).

Documents / Resources



[PHILIPS 271V8LAB3 Computer Monitor](#) [pdf] User Guide
271V8LAB3-57, 271V8LAB3 Computer Monitor, 271V8LAB3, Computer Monitor, Monitor

References

- [Philips - United States | Philips](#)
- [Support Home | Philips](#)
- [Product registration | Philips](#)
- [User Manual](#)

[Manuals+](#). [Privacy Policy](#)

This website is an independent publication and is neither affiliated with nor endorsed by any of the trademark owners. The "Bluetooth®" word mark and logos are registered trademarks owned by Bluetooth SIG, Inc. The "Wi-Fi®" word mark and logos are registered trademarks owned by the Wi-Fi Alliance. Any use of these marks on this website does not imply any affiliation with or endorsement.