



PHILIPS 271S9 S Line Smart LED Display User Guide

[Home](#) » [Philips](#) » PHILIPS 271S9 S Line Smart LED Display User Guide 

PHILIPS

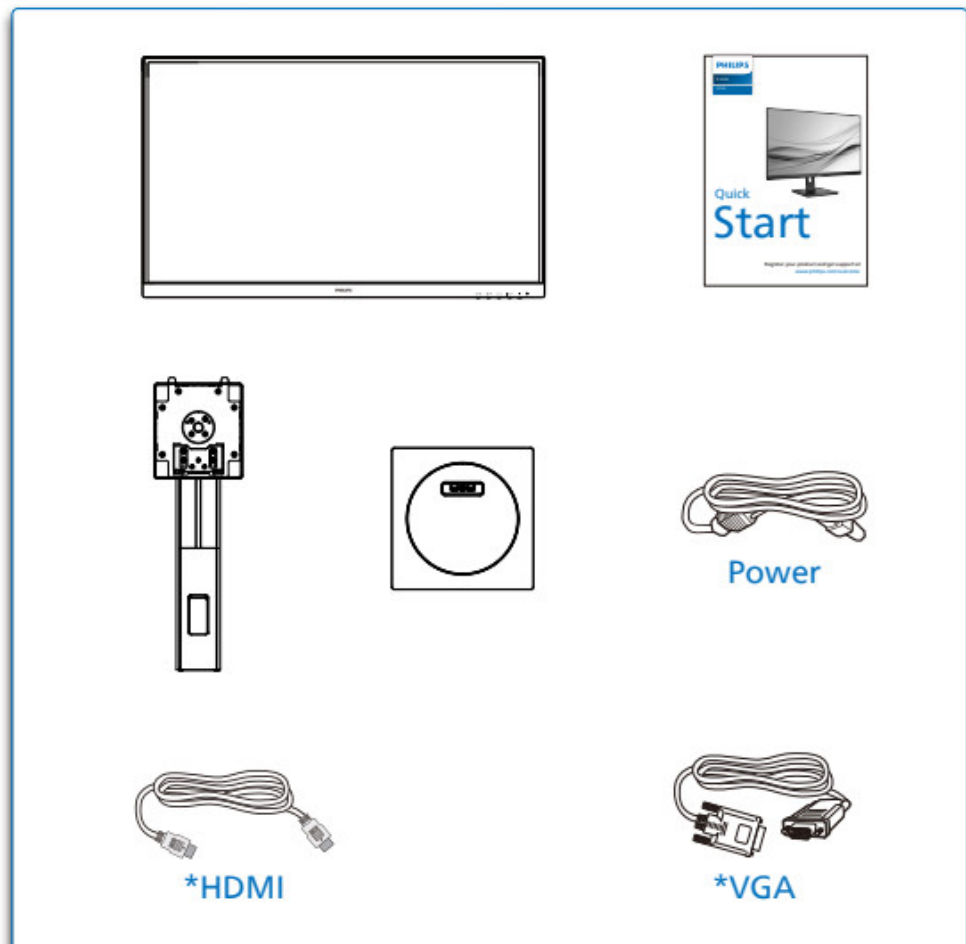
271S9 S Line Smart LED Display
User Guide



Contents

- 1 271S9 S Line Smart LED Display
- 2 Documents / Resources
 - 2.1 References
- 3 Related Posts

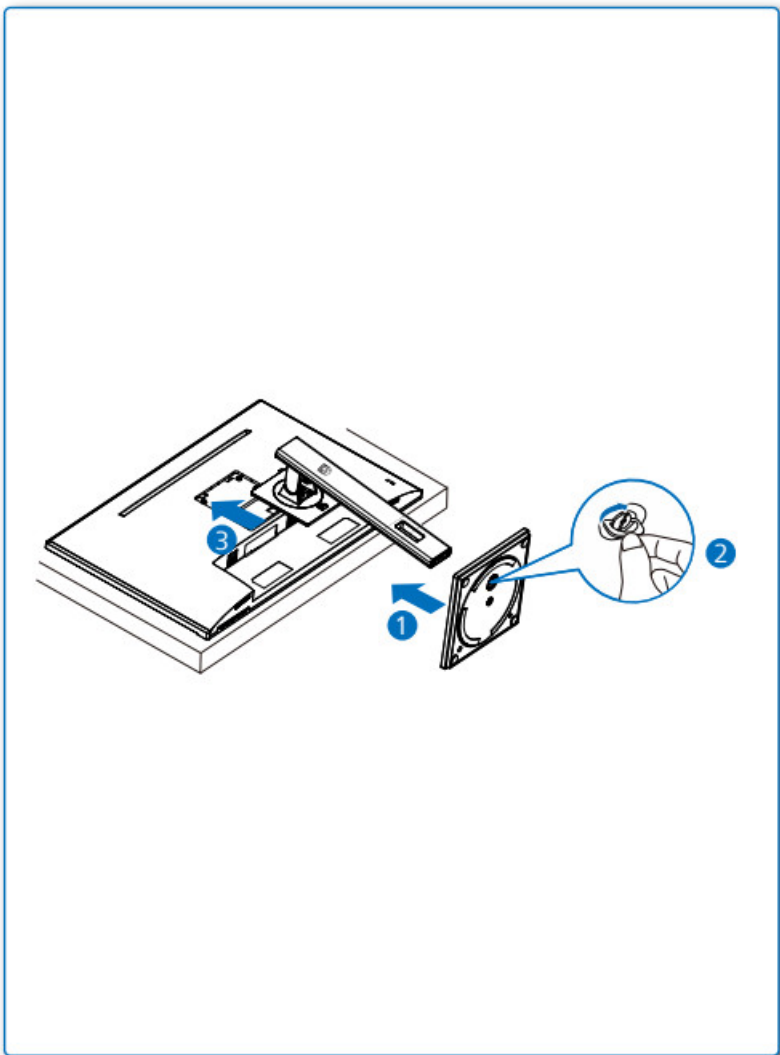
271S9 S Line Smart LED Display



***Different according to region**

Display design may differ from that illustrated

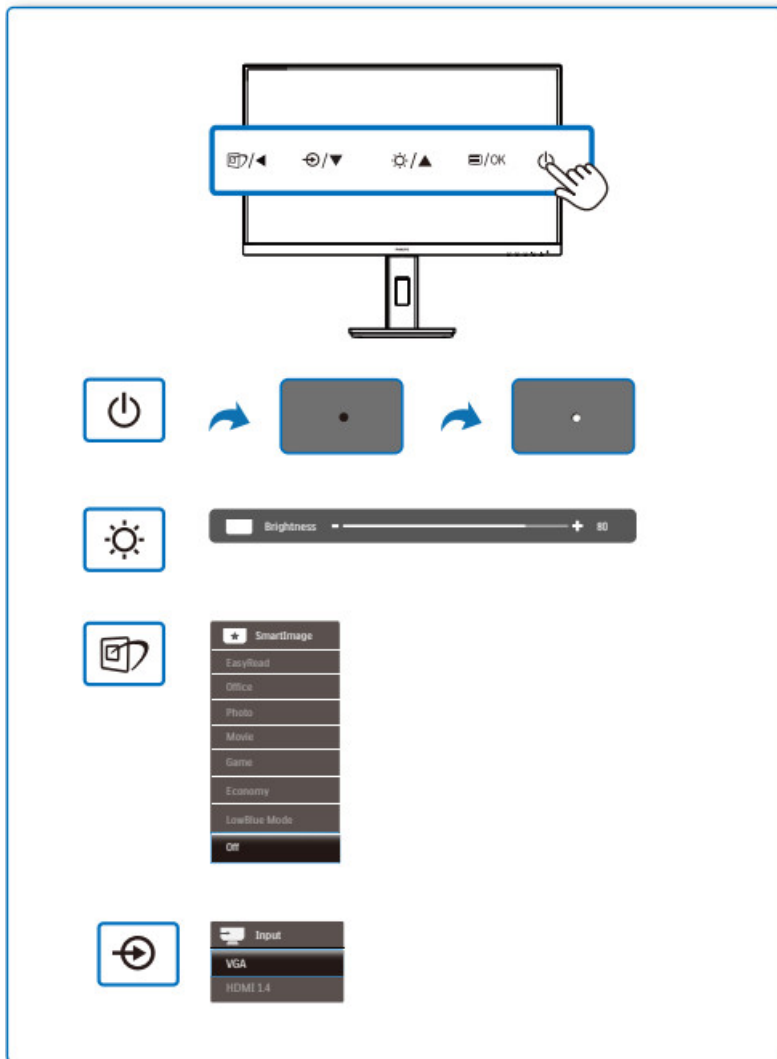
1



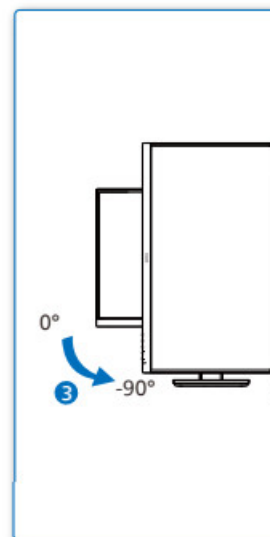
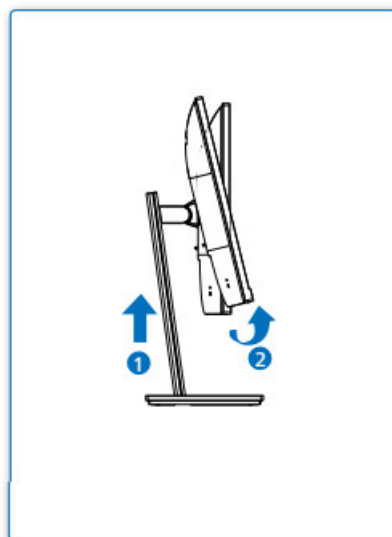
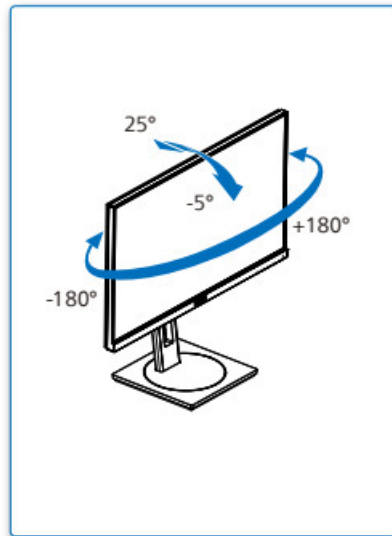
2



3



4



FAQ



Software
SmartControl



User
Manual

Register your product and get support at
<http://www.philips.com/support>

Version: M9271SQ1T
2022 © TOP Victory Investments Ltd. All rights reserved.
This product has been manufactured by and is sold under the responsibility of Top Victory Investments Ltd., and Top Victory Investments Ltd. is the warrantor in relation to this product.
Philips and the Philips Shield Emblem are registered trademarks of Koninklijke Philips N.V. and are used under license.
Specifications are subject to change without notice.



The Adopted Trademarks HDMI, HDMI High Definition Multimedia Interface and the HDMI Logo are trademarks or registered trademarks of HDMI Licensing Administrator, Inc. in the United States and other countries.

www.philips.com

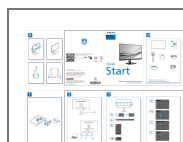


Printed in China



H41G78S381355A

Documents / Resources



[PHILIPS 271S9 S Line Smart LED Display](#) [pdf] User Guide

271S9 S Line Smart LED Display, 271S9, S Line Smart LED Display, Smart LED Display, LED Display, Display

References

- [Philips - United States | Philips](#)
- [Philips Customer Service Support - Home | Philips](#)
- [Product registration | Philips](#)