



PHILIPS 271E1S E Line Smart LED Display Owner's Manual

[Home](#) » [Philips](#) » PHILIPS 271E1S E Line Smart LED Display Owner's Manual 

PHILIPS

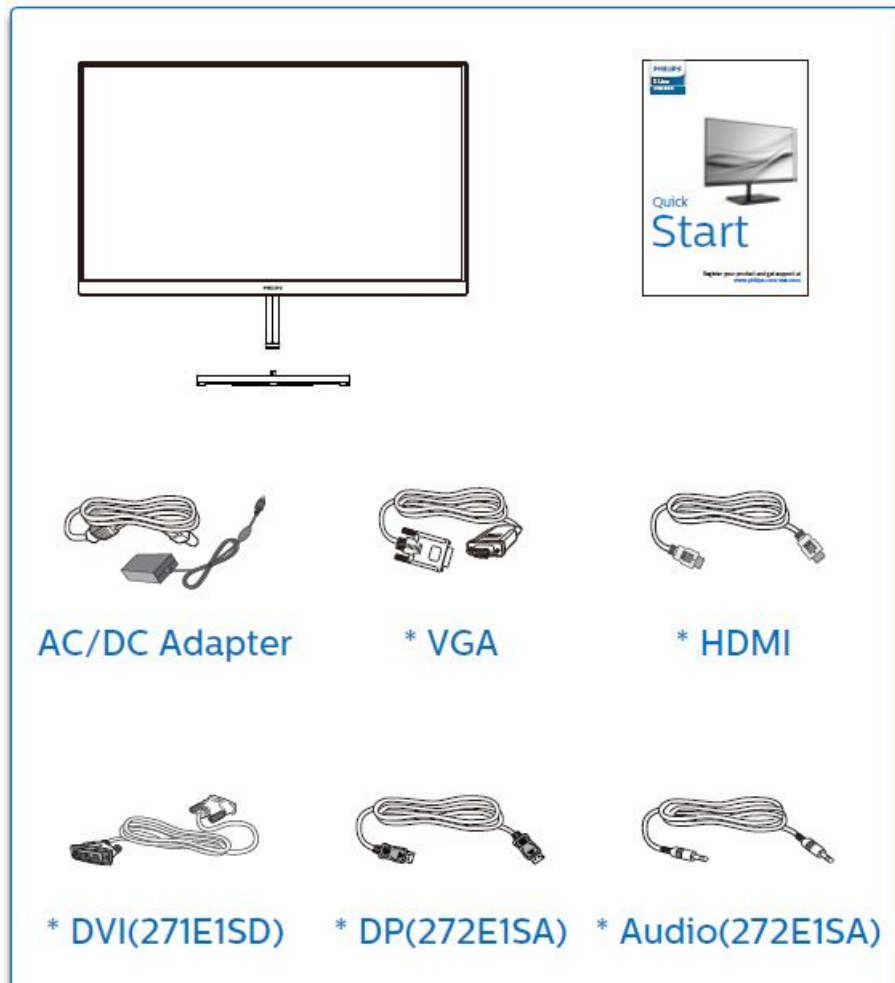
Contents

- [1 PHILIPS 271E1S E Line Smart LED Display](#)
- [2 WHAT IN THE BOX](#)
- [3 INSTALLATION](#)
- [4 Documents / Resources](#)
 - [4.1 References](#)
- [5 Related Posts](#)

PHILIPS 271E1S E Line Smart LED Display

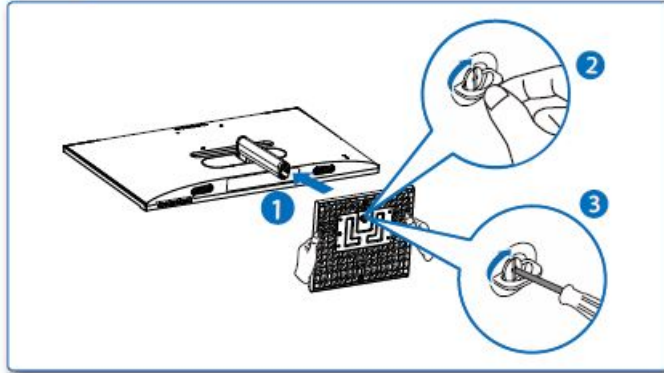


WHAT IN THE BOX



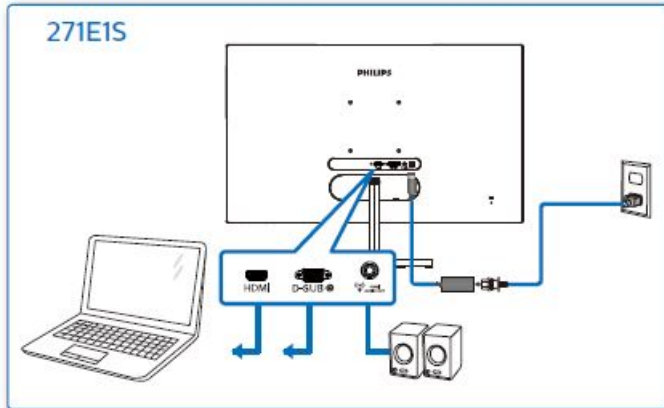
INSTALLATION

1

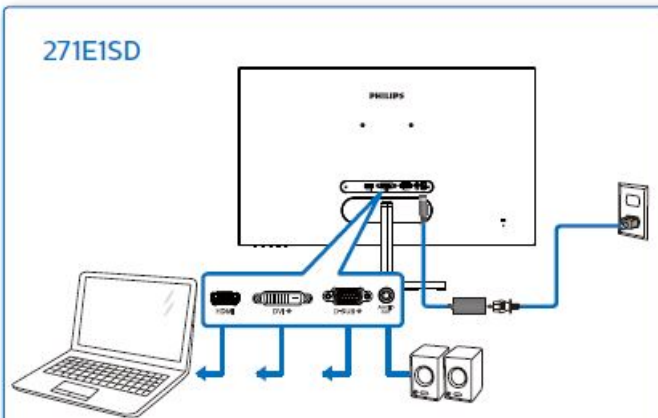


2

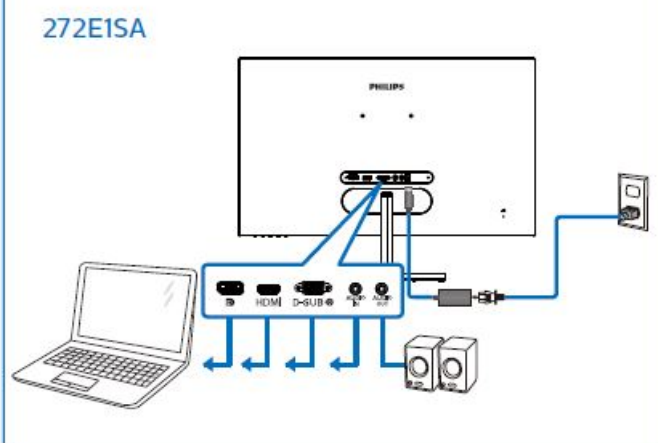
271E1S

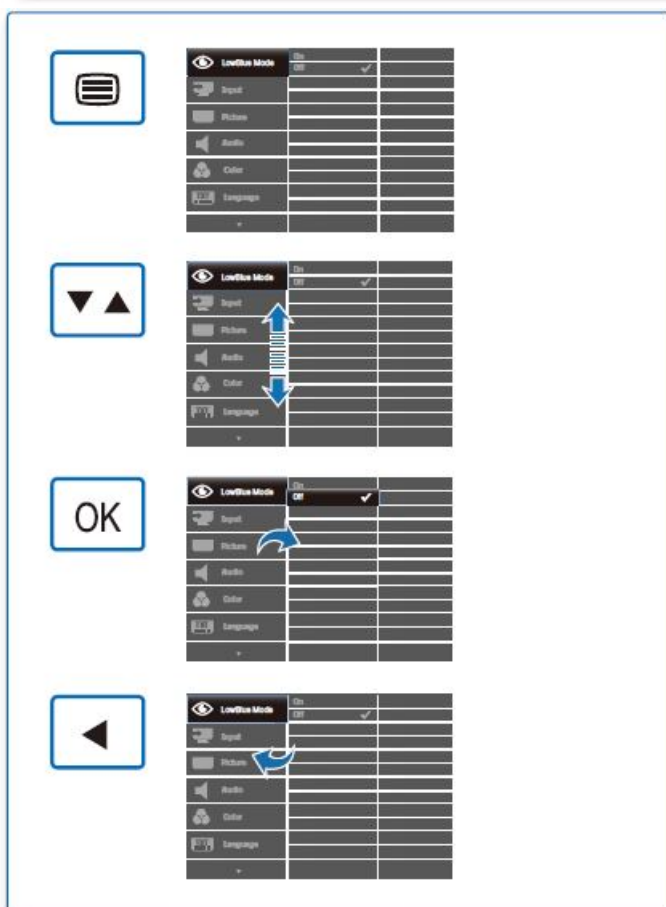
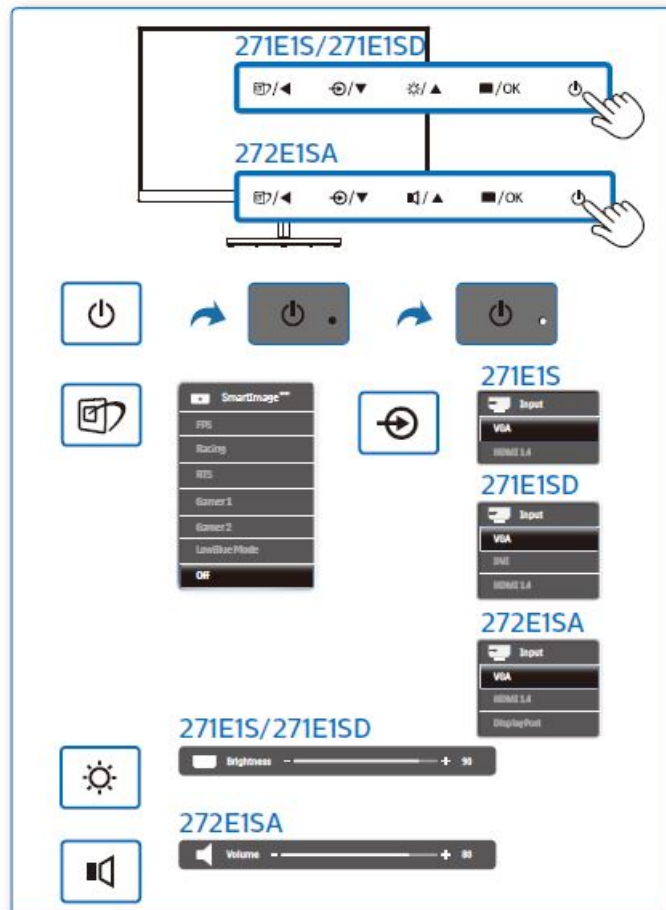


271E1SD

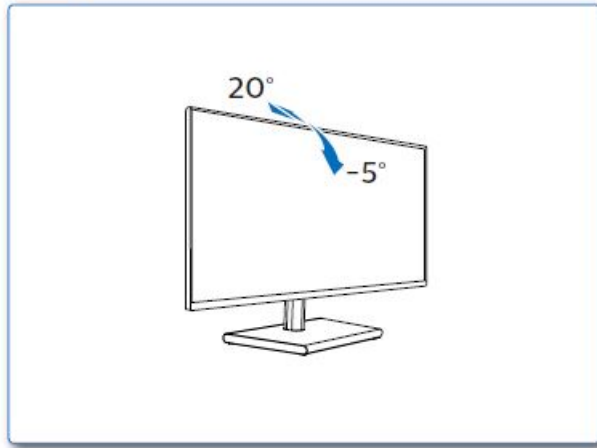


272E1SA





4



Register your product and get support at www.philips.com/support



- FAQ
- Software SmartControl
- User Manual
- Version: M1271ESQ1WWT

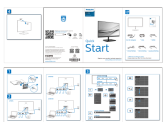
2020 © TOP Victory Investments Ltd. All rights reserved. This product has been manufactured by and is sold under the responsibility of Top Victory Investments Ltd., and Top Victory Investments Ltd. is the warrantor in relation to this product. Philips and the Philips Shield Emblem have registered trademarks of Koninklijke Philips N.V. and are used under license. Specifications are subject to change without notice. The terms HDMI, HDMI High-Definition Multimedia Interface, and the HDMI Logo are trademarks or registered trademarks of HDMI Licensing Administrator, Inc. www.philips.com

Energy Labelling

- 271E1SD
- 272E1SA



Documents / Resources



[PHILIPS 271E1S E Line Smart LED Display](#) [pdf] Owner's Manual

271E1S, 272E1S, 271E1S E Line Smart LED Display, 271E1S, E Line, Smart LED Display, LED Display

References

- [Philips - United States | Philips](#)
- [Philips Customer Service Support - Home | Philips](#)
- [Product registration | Philips](#)

Manuals+.