

PHILIPS

24E1N1200A
Computer
Monitor



PHILIPS 24E1N1200A Computer Monitor User Guide

[Home](#) » [Philips](#) » PHILIPS 24E1N1200A Computer Monitor User Guide 

Contents

- [1 PHILIPS 24E1N1200A Computer Monitor](#)
- [2 Introduction](#)
- [3 Contents](#)
- [4 Specifications](#)
- [5 Setup Instructions](#)
- [6 FAQ](#)
- [7 Documents / Resources](#)
 - [7.1 References](#)
- [8 Related Posts](#)

PHILIPS

PHILIPS 24E1N1200A Computer Monitor



Specifications

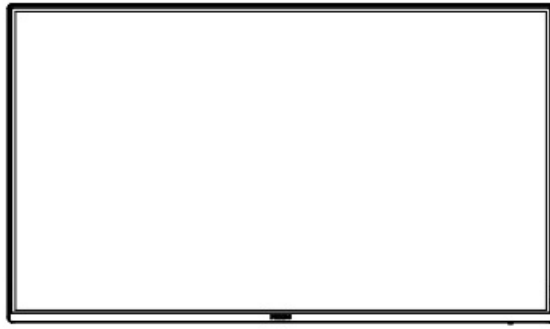
- Model: Monitor 1000 Series
- Models Available: 24E1N1200A, 27E1N1200A
- Resolution: HD (specific resolution may vary)
- Inputs: VGA, HDMI 1.4, DisplayPort
- Features: LowBlue Mode, SmartImage, EasyRead, Office, Photo, Movie, Game, Economy

Introduction

Welcome to your new Philips Monitor. This guide will help you set up your monitor quickly and easily. For further assistance, you can register your product and get support at www.philips.com/welcome.

Contents

- Monitor
- Power Cable
- DP Cable
- HDMI Cable
- VGA Cable
- Audio Cable



Power



DP



HDMI



VGA



Audio

The images shown are for illustrative purposes only. Actual product and accessory may vary by country or regions. Actual product and accessory shall prevail in kind.

Specifications

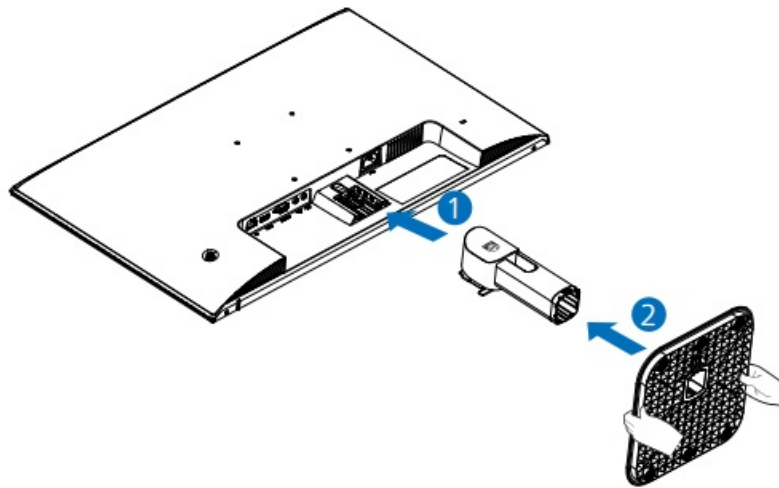
Model	Energy Labelling
24E1N1200A	24E1N1200A
27E1N1200A	27E1N1200A

Setup Instructions

Step 1: Positioning the Monitor

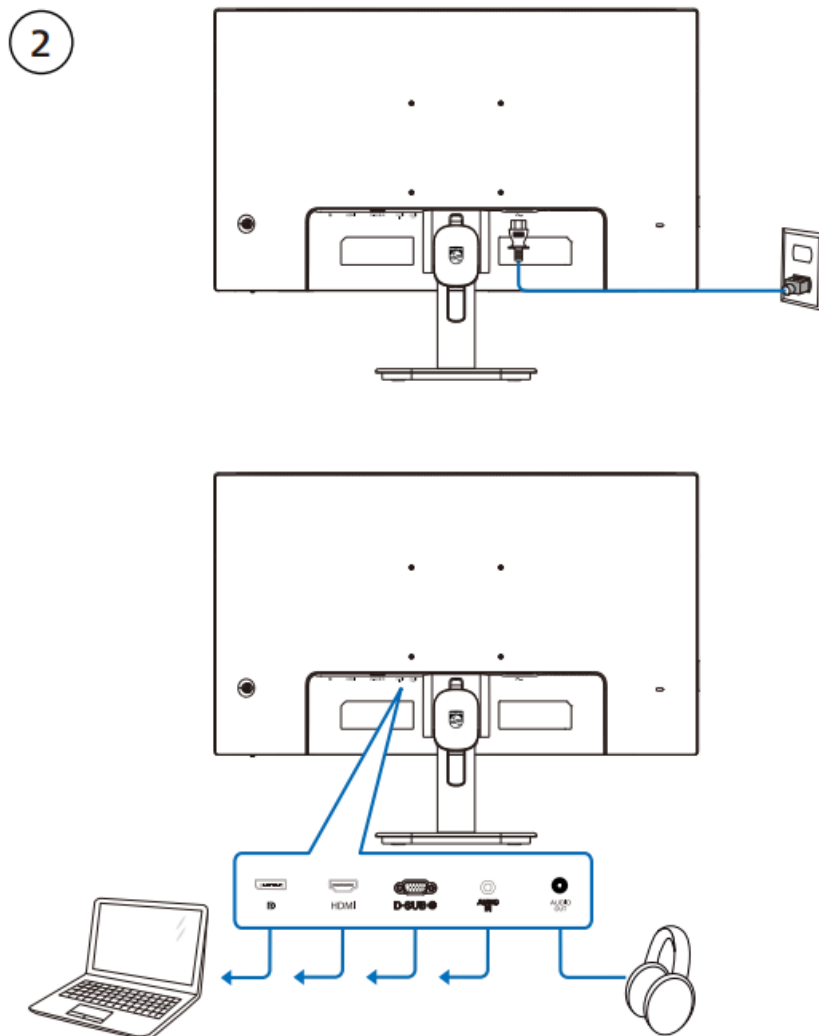
Place the monitor face down on a smooth surface. Pay attention not to scratch or damage the screen.

1



Step 2: Connecting Cables

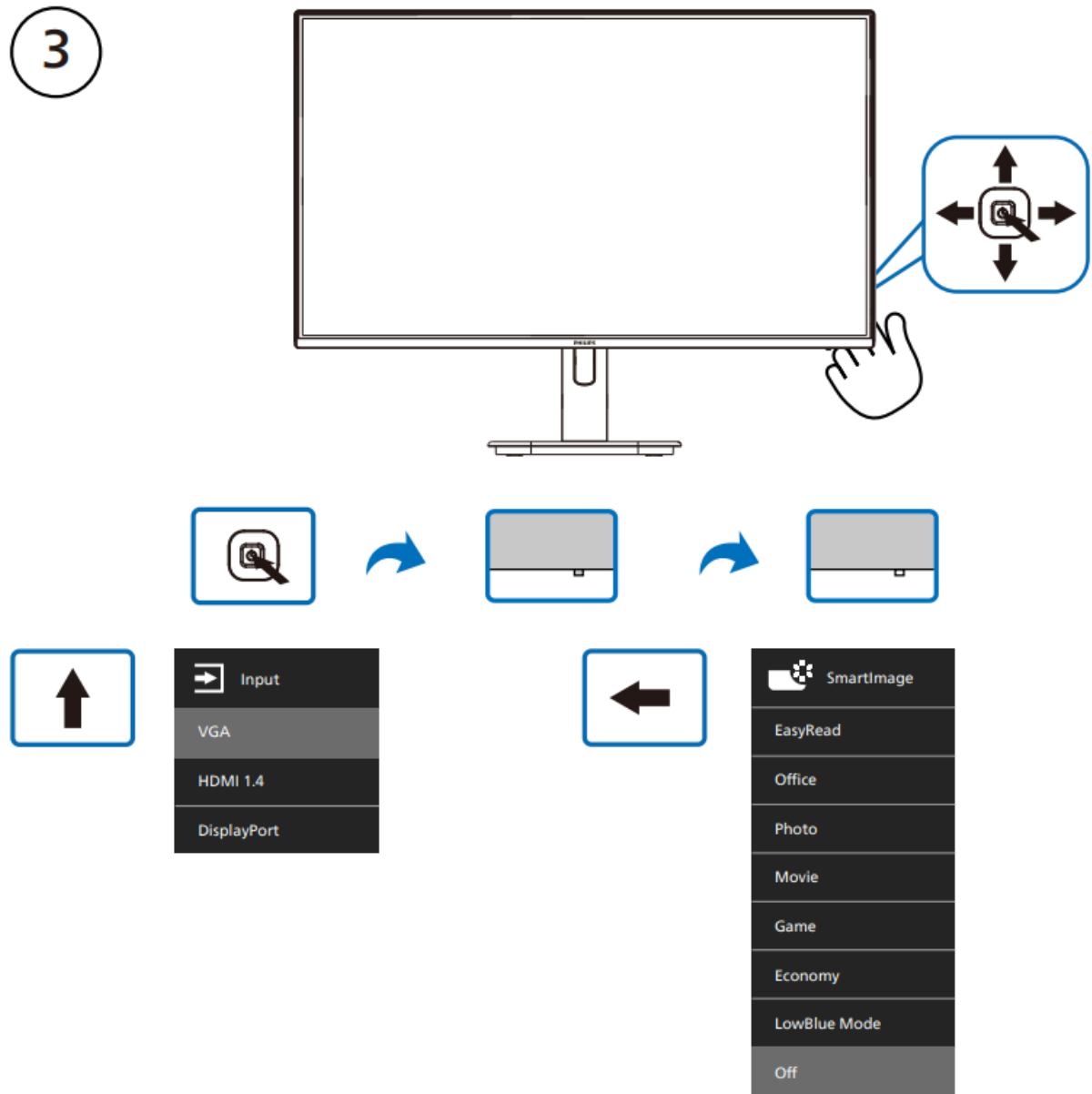
Connect the necessary cables to the back of the monitor. Ensure all connections are secure.



Step 3: Power On and Adjust Settings

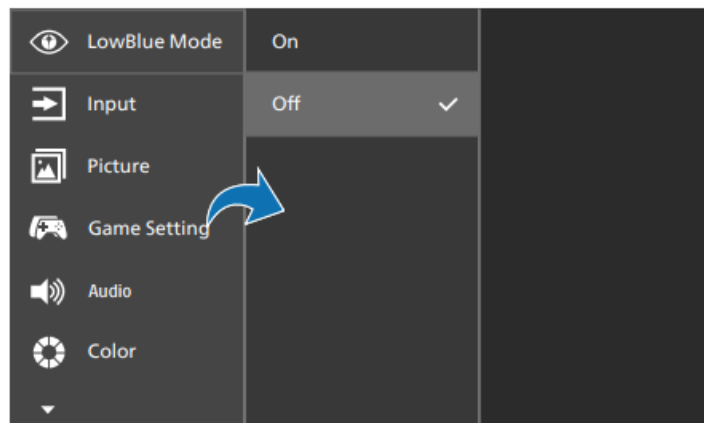
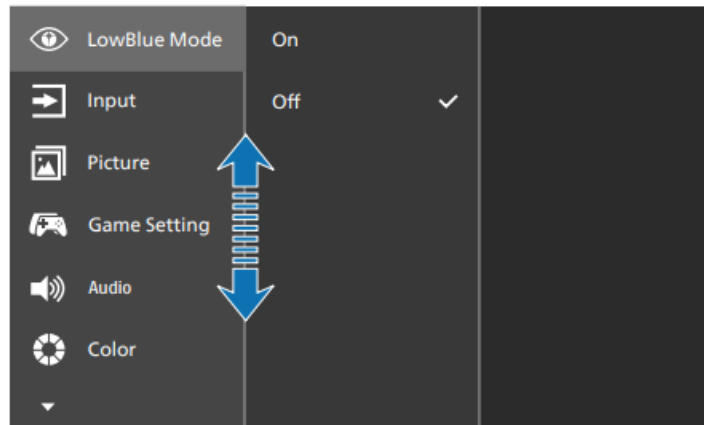
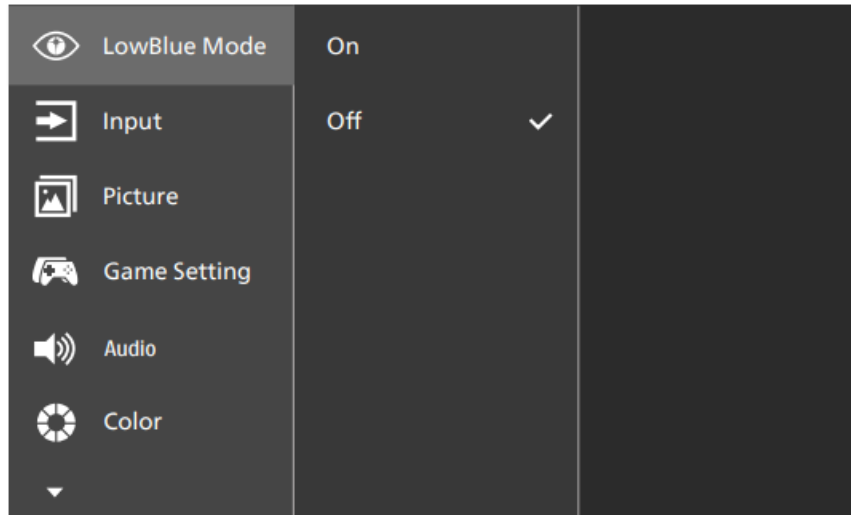
Turn on the monitor and use the on-screen menu to adjust settings such as input source and display preferences.

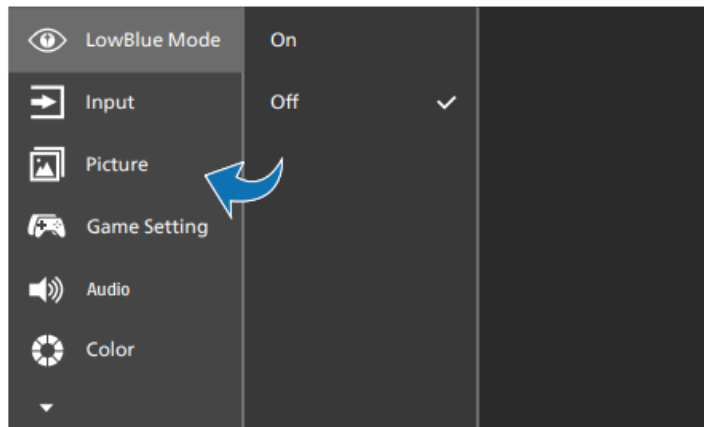
3



On-Screen Menu Navigation

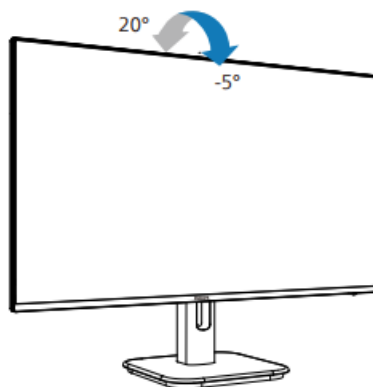
- Input: VGA, HDMI 1.4, DisplayPort
- LowBlue Mode: On/Off
- Picture Settings
- Game Settings
- Color Settings





Dimension

4



Register your product and get support at www.philips.com/support



FAQ



Software
SmartControl



User
Manual

Version: 2XE1N1200AQ1L

2024 © TOP Victory Investments Ltd. All rights reserved.

This product has been manufactured by and is sold under the responsibility of Top Victory Investments Ltd., and

Top Victory Investments Ltd. is the warrantor in relation to this product. Philips and the Philips Shield Emblem are registered trademarks of Koninklijke Philips N.V. and are used under license. Specifications are subject to change without notice.



The terms HDMI, HDMI High-Definition Multimedia Interface, HDMI Trade Dress and the HDMI Logos are trademarks or registered trademarks of HDMI Licensing Administrator, Inc. www.philips.com

Energy Labelling 24E1N1200A 27E1N2100A



Printed in China



FAQ

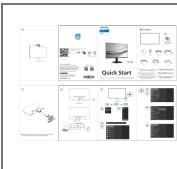
- **Q: Can I wall-mount this monitor?**

A: Some models in the Monitor 1000 Series are compatible with VESA wall mounts. Please refer to the product specifications or user manual for details on wall-mounting options.

- **Q: How do I enable the LowBlue Mode?**

A: To activate the LowBlue Mode for reduced blue light emission, navigate to the monitor's settings menu and select the LowBlue Mode option. Toggle it on to enable this feature.

Documents / Resources



[PHILIPS 24E1N1200A Computer Monitor](#) [pdf] User Guide
27E1N1200A-11, 24E1N1200A-11, 24E1N1200AW-11, 24E1N1200A Computer Monitor,
24E1N1200A, Computer Monitor, Monitor

References

- [Philips - United States | Philips](#)
- [Philips Customer Service Support - Home | Philips](#)
- [Product registration | Philips](#)
- [User Manual](#)

[Manuals+](#), [Privacy Policy](#)

This website is an independent publication and is neither affiliated with nor endorsed by any of the trademark owners. The "Bluetooth®" word mark and logos are registered trademarks owned by Bluetooth SIG, Inc. The "Wi-Fi®" word mark and logos are registered trademarks owned by the Wi-Fi Alliance. Any use of these marks on this website does not imply any affiliation with or endorsement.