



## PHILIPS 245E1S E Line LCD Monitor User Guide

[Home](#) » [Philips](#) » PHILIPS 245E1S E Line LCD Monitor User Guide 

### Contents

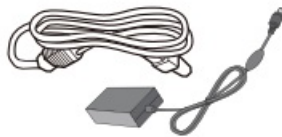
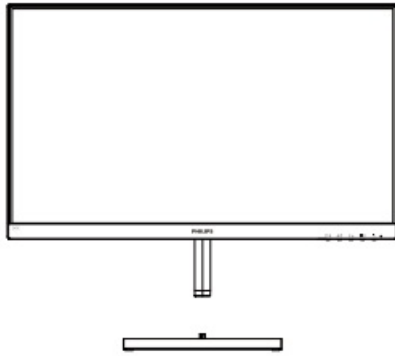
- [1 PHILIPS 245E1S E Line LCD Monitor](#)
- [2 WHAT'S IN THE BOX](#)
- [3 INSTALLATION](#)
- [4 Documents / Resources](#)
  - [4.1 References](#)
- [5 Related Posts](#)

**PHILIPS**

### PHILIPS 245E1S E Line LCD Monitor



## WHAT'S IN THE BOX



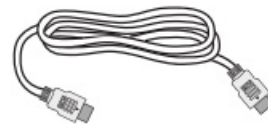
AC/DC Adapter



\* VGA



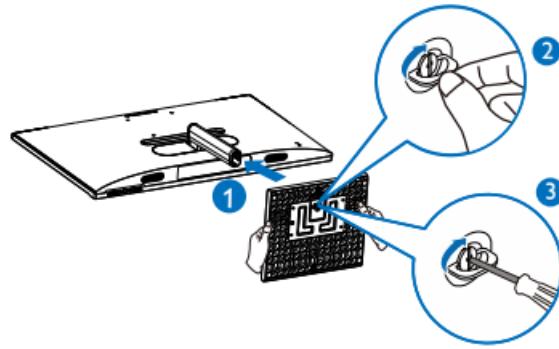
\* DP

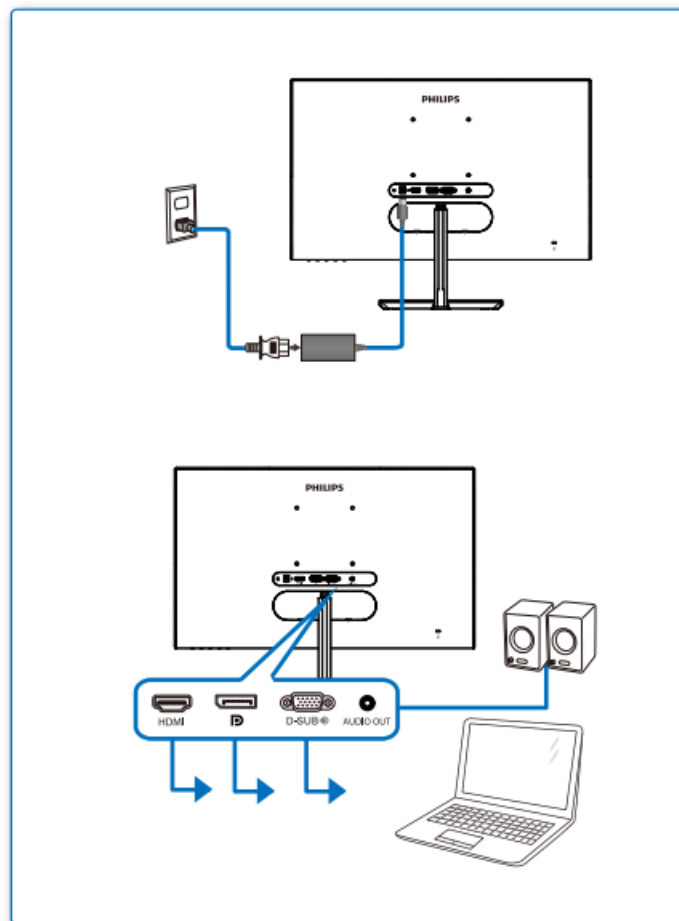


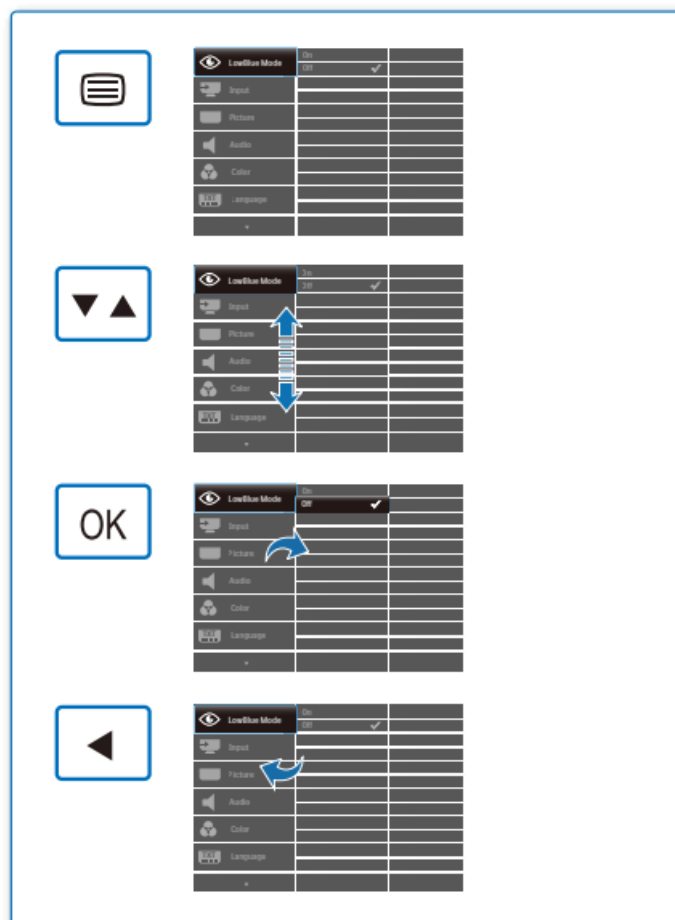
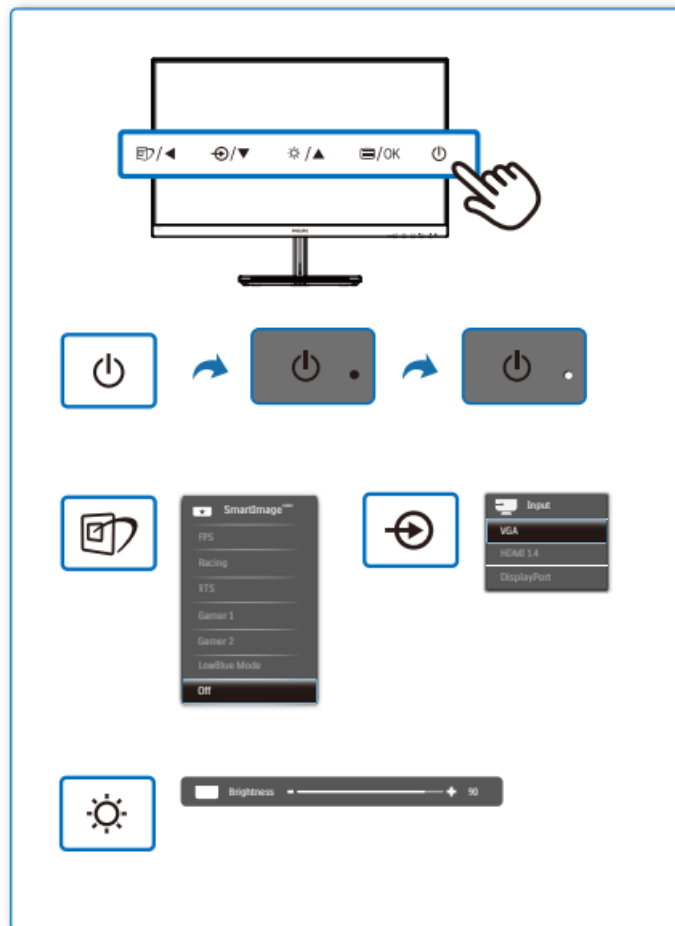
\* HDMI

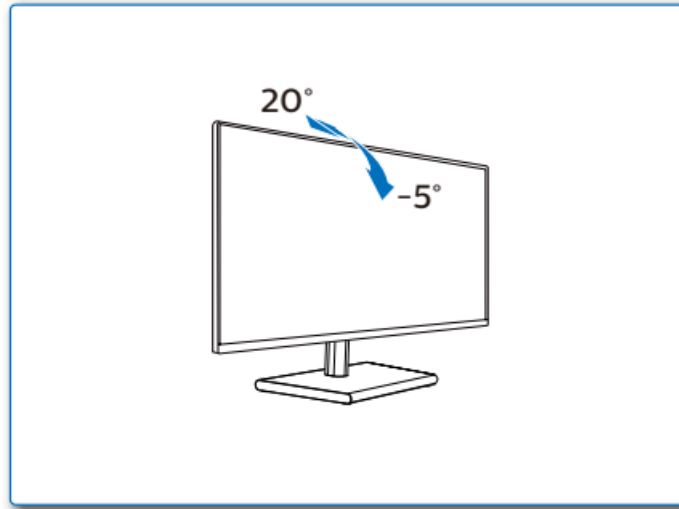
## INSTALLATION

1



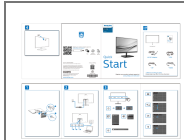




**2019 © TOP Victory Investments Ltd.**

All rights reserved. This product has been manufactured by and is sold under the responsibility of Top Victory Investments Ltd., and Top Victory Investments Ltd. is the warrantor in relation to this product. Philips and the Philips Shield Emblem have registered trademarks of Koninklijke Philips N.V. and are used under license. Specifications are subject to change without notice.

The terms HDMI, HDMI High-Definition Multimedia Interface, and the HDMI Logo are trademarks or registered trademarks of HDMI Licensing Administrator, Inc

**Documents / Resources**

[PHILIPS 245E1S E Line LCD Monitor](#) [pdf] User Guide  
245E1S, E Line LCD Monitor, 245E1S E Line LCD Monitor, LCD Monitor, Monitor

**References**

- [Philips - United States | Philips](#)
- [Philips Customer Service Support - Home | Philips](#)
- [Product registration | Philips](#)