




PHILIPS 245E1 E line LCD Monitor User Guide

[Home](#) » [Philips](#) » PHILIPS 245E1 E line LCD Monitor User Guide 

PHILIPS 245E1 E line LCD Monitor User Guide



Contents

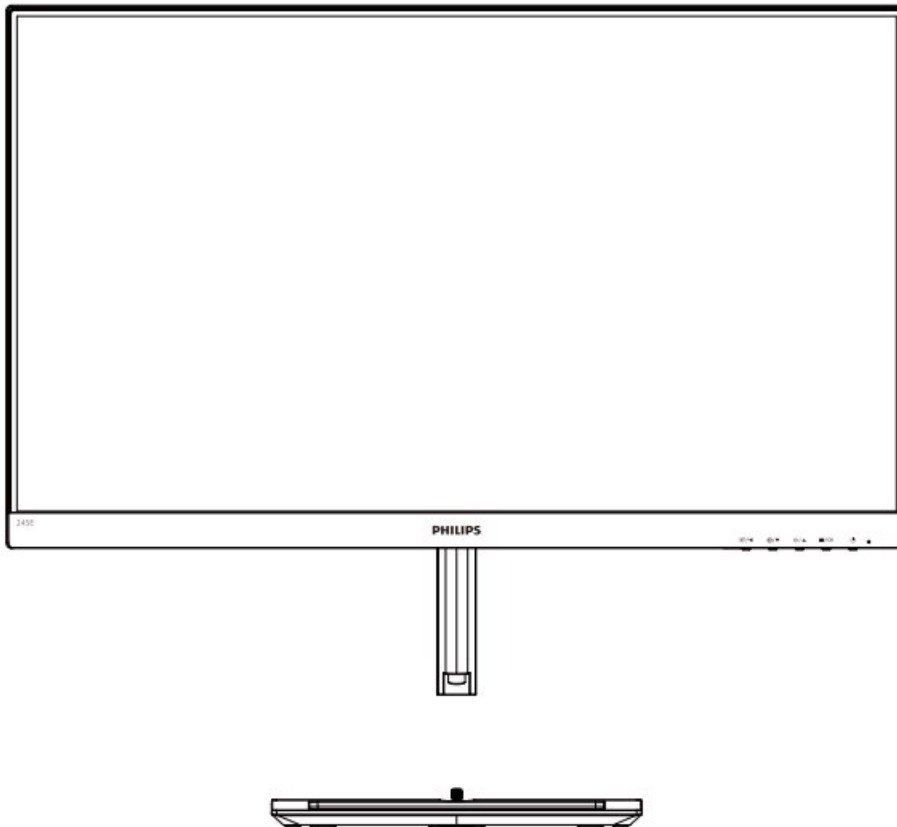
1 What in the box.

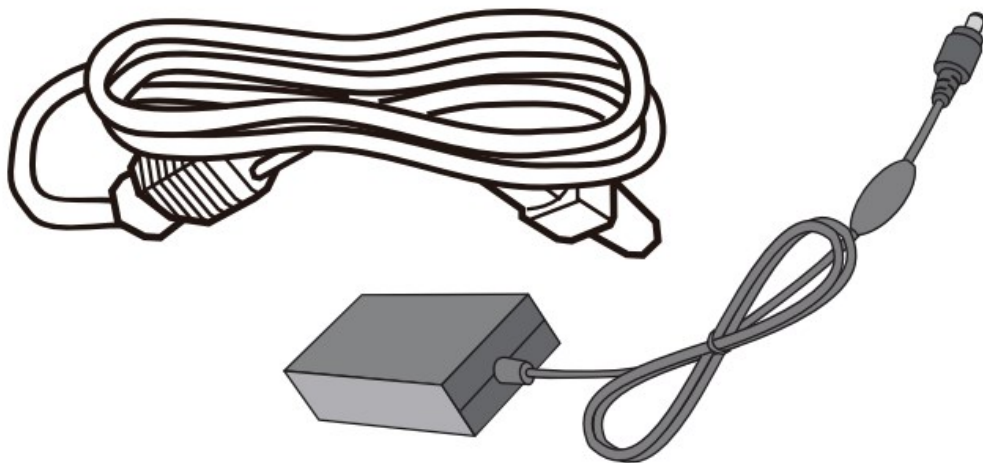
2 Documents /
Resources

2.1 References

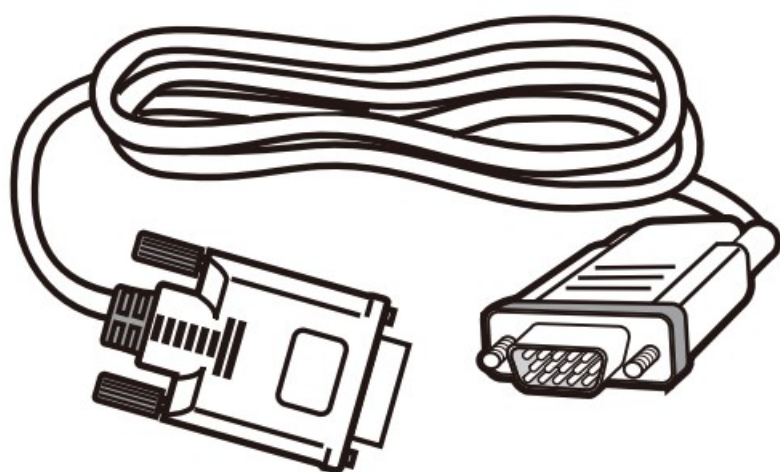
3 Related Posts

What in the box.

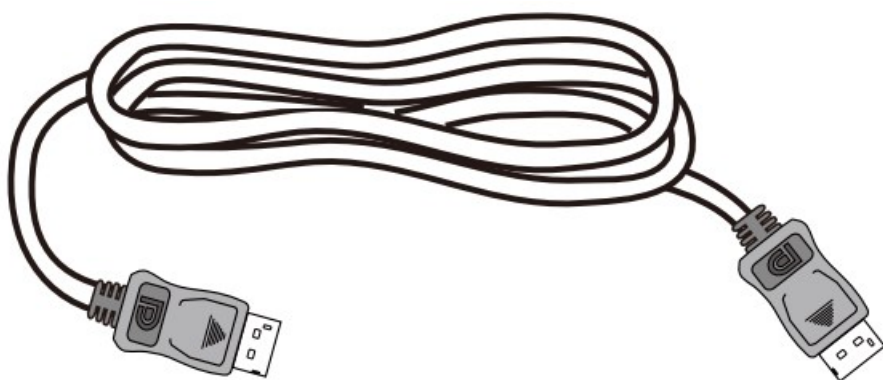




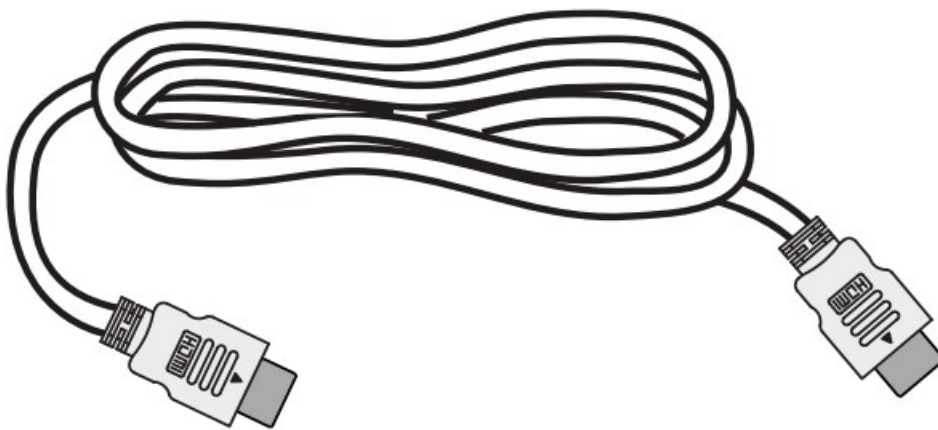
AC/DC Adapter



* VGA

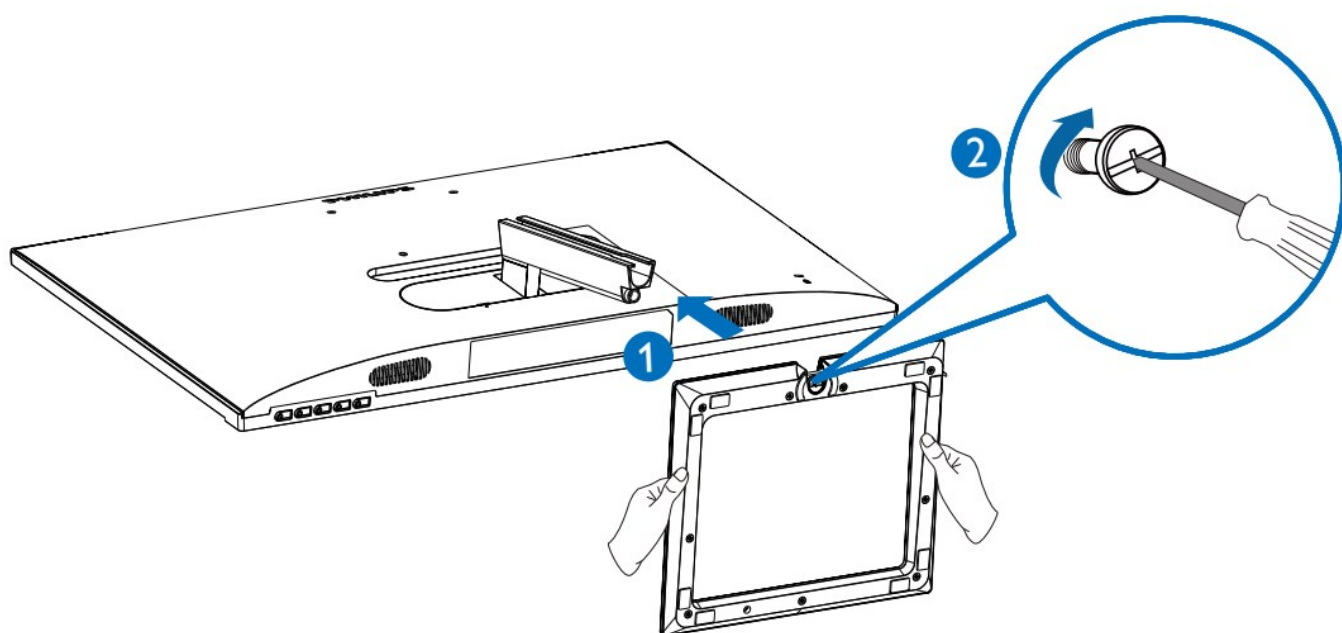


* DP

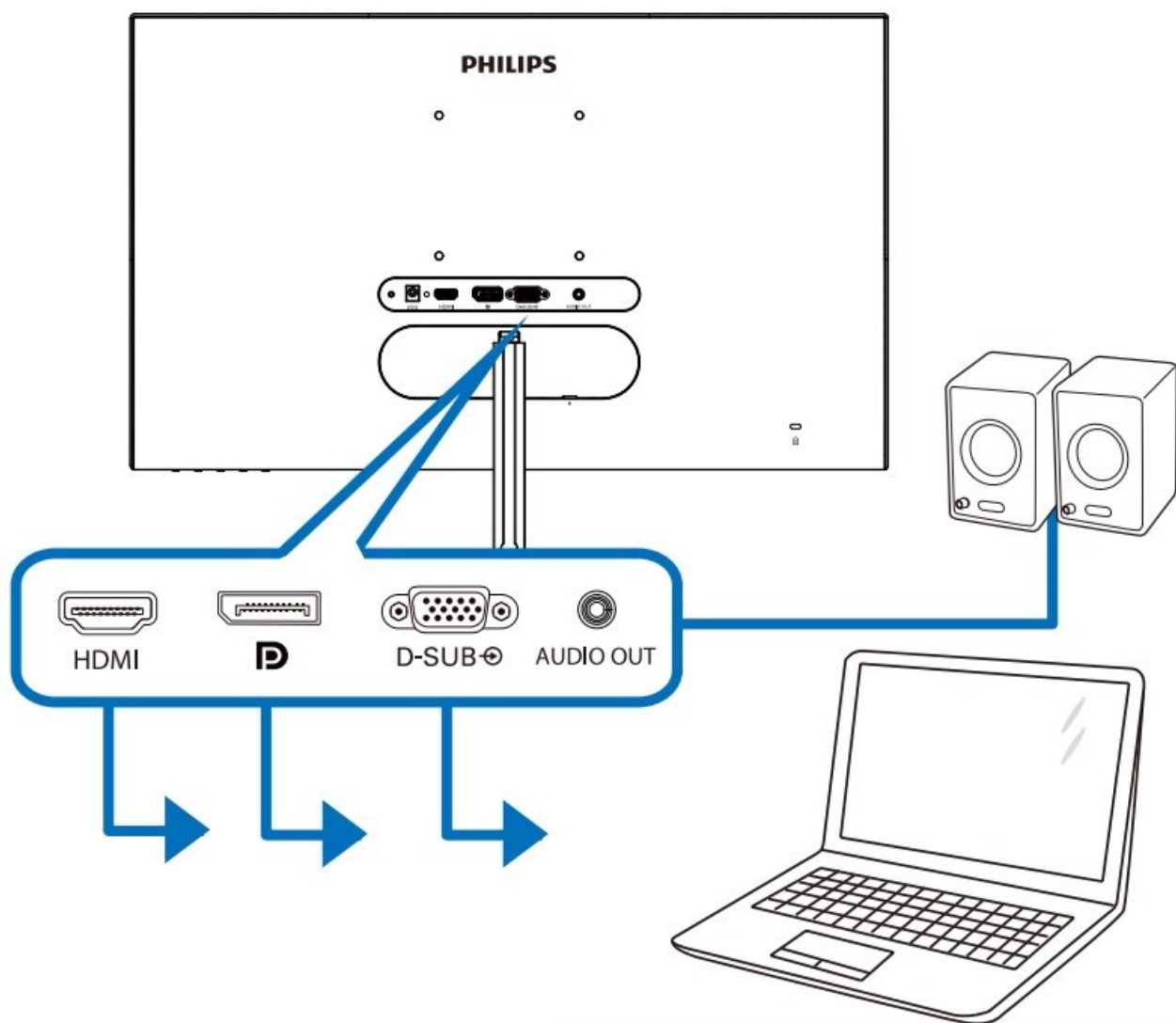
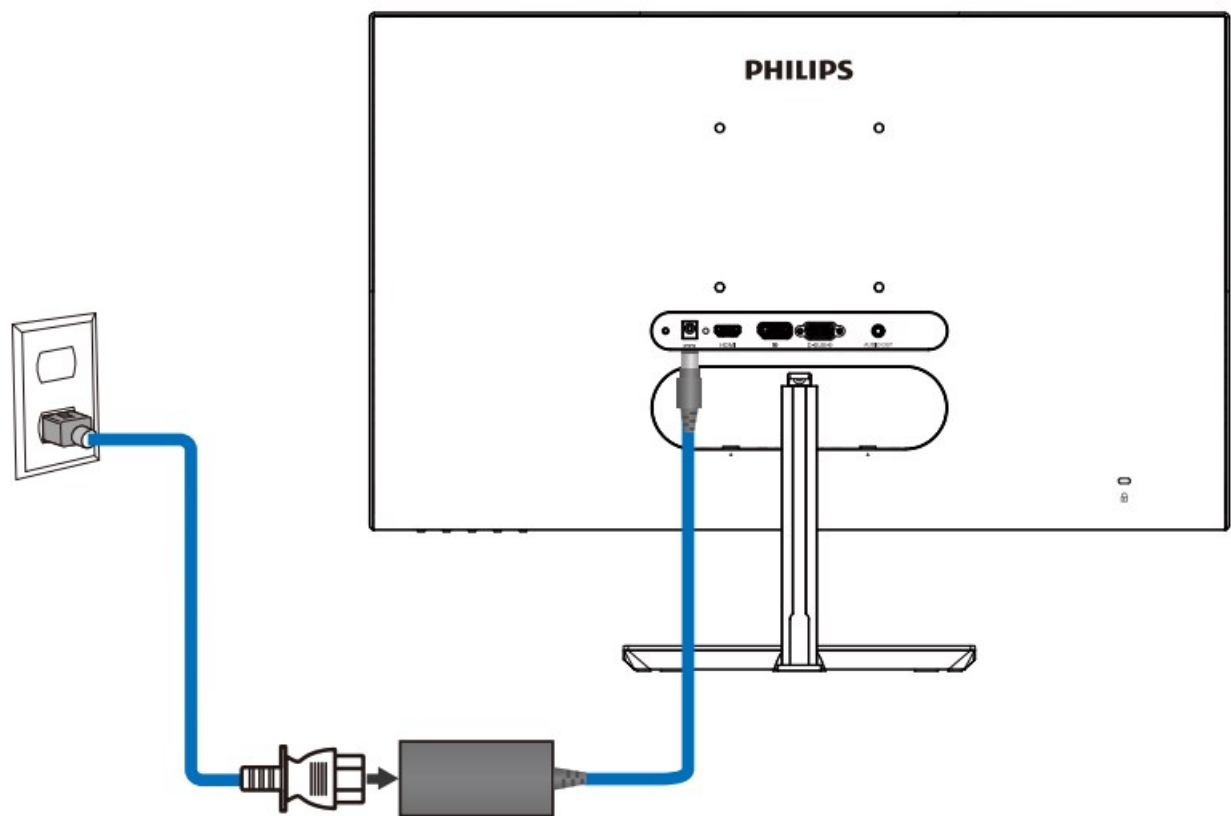


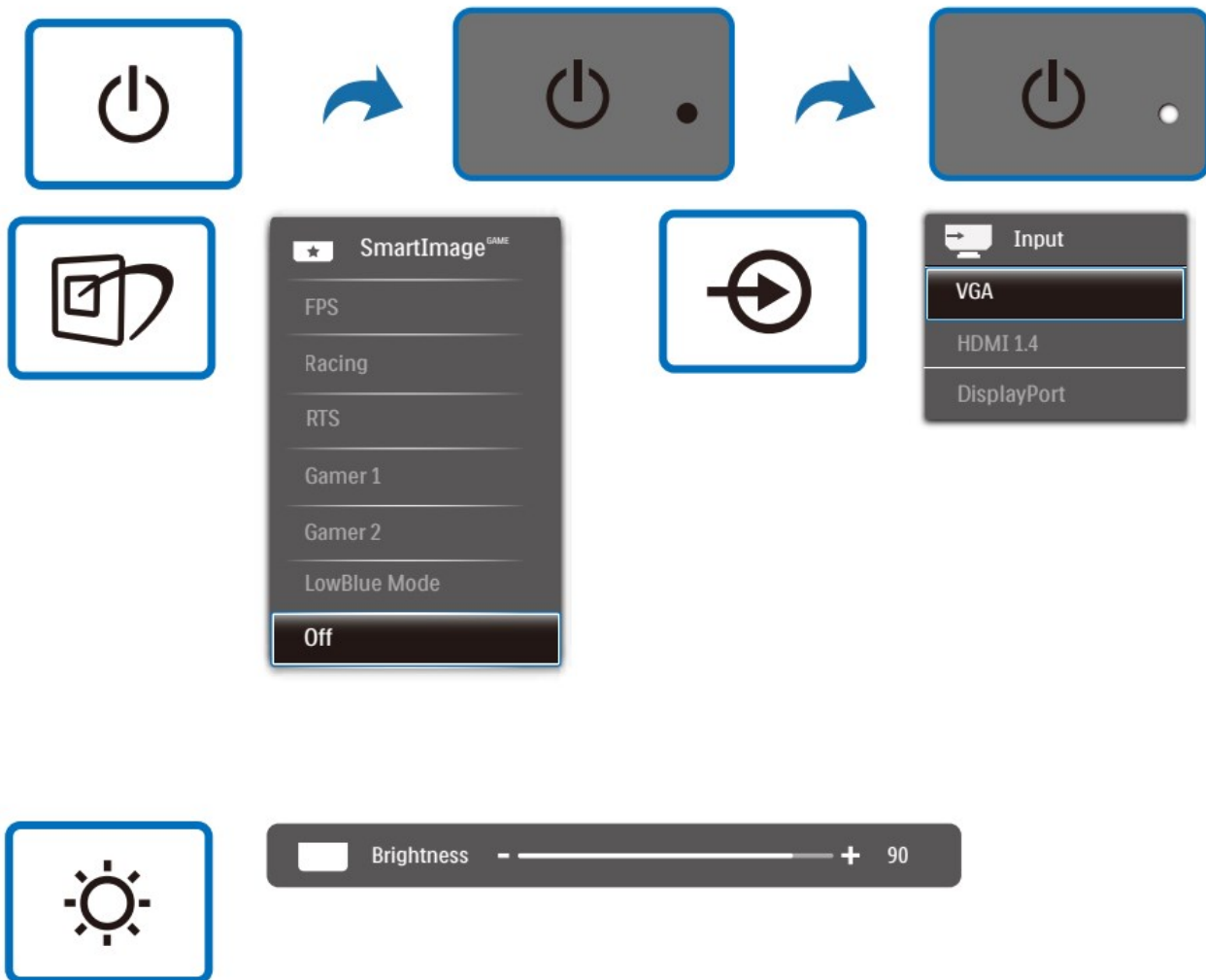
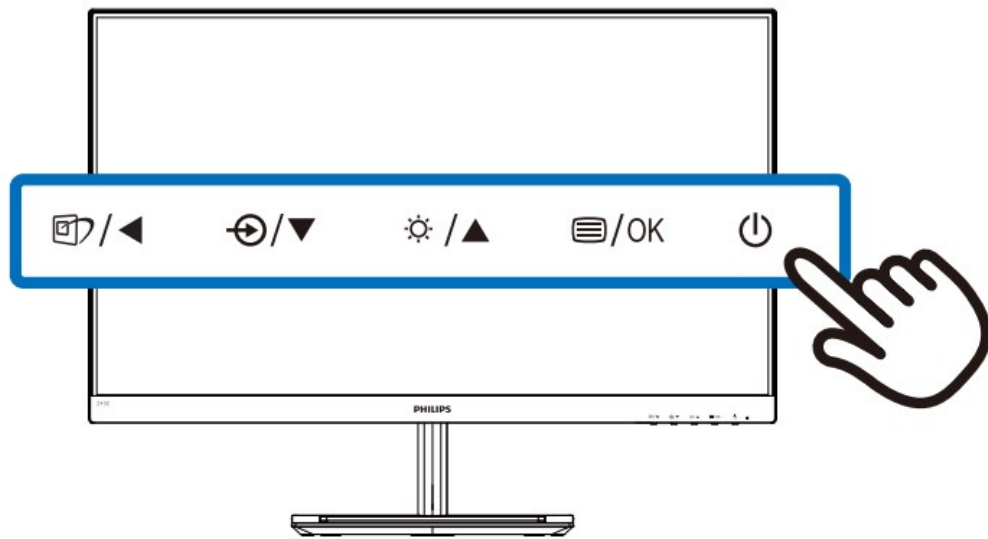
* HDMI

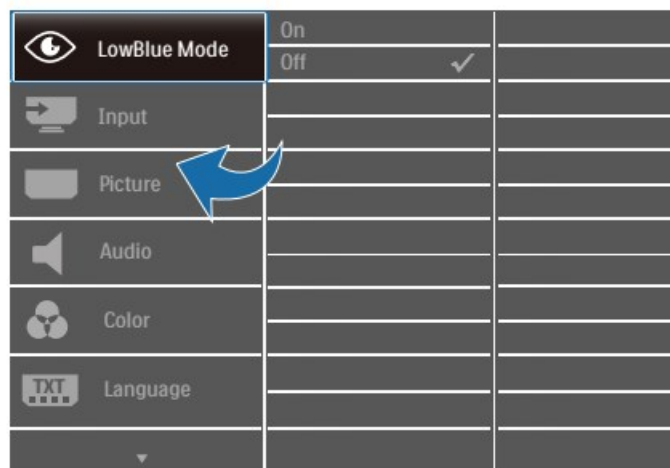
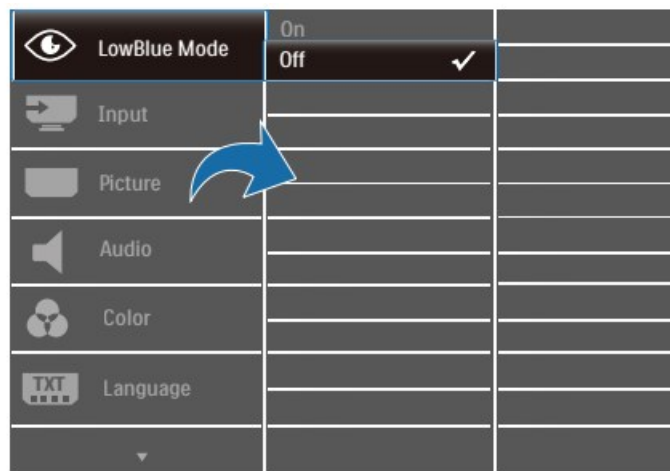
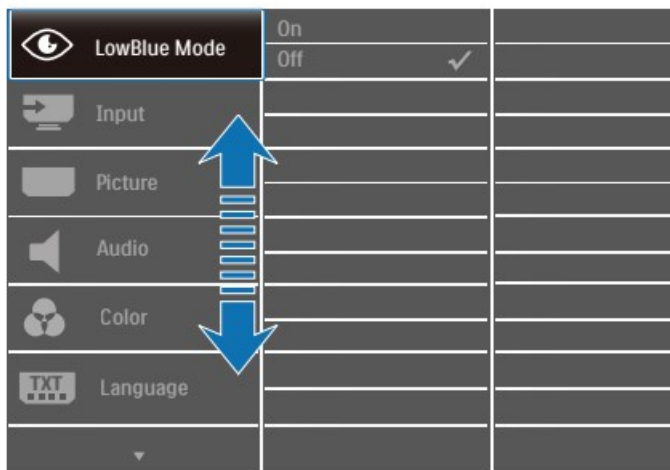
1

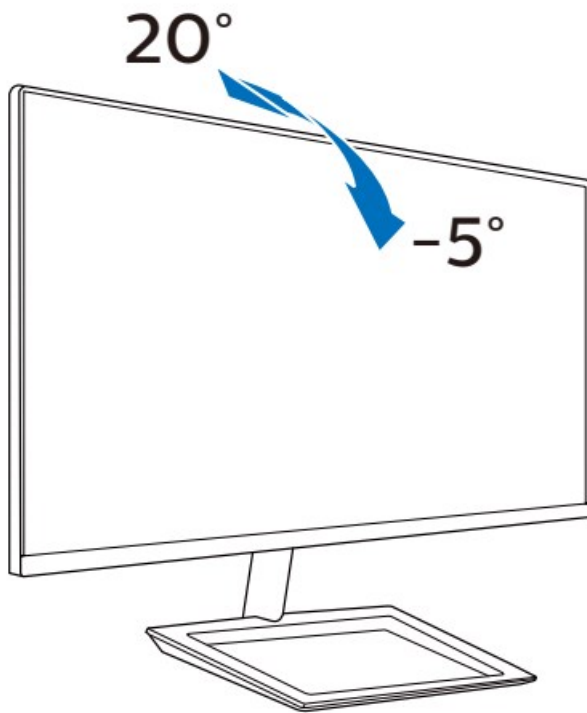


2









Register your product and get support at
www.philips.com/support



Version: M1245EQ1WWT

2019 © TOP Victory Investments Ltd. All rights reserved.

This product has been manufactured by and is sold under the responsibility of Top Victory Investments Ltd., and Top Victory Investments Ltd. is the warrantor in relation to this product. Philips and the Philips Shield Emblem are registered trademarks of Koninklijke Philips N.V. and are used under license.


Specifications are subject to change without notice





The terms HDMI, HDMI High-Definition Multimedia Interface, and the HDMI Logo are trademarks or registered trademarks of HDMI Licensing Administrator, Inc.

<http://www.philips.com/>

Documents / Resources

	<p>PHILIPS 245E1 E line LCD Monitor [pdf] User Guide 245E1, E line LCD Monitor, 245E1 E line LCD Monitor, LCD Monitor, Monitor</p>
---	---

References

-  [Philips - United States | Philips](#)
-  [Philips Customer Service Support - Home | Philips](#)
-  [Product registration | Philips](#)