



PHILIPS 243B1 B Line Smart LED Display User Guide

[Home](#) » [Philips](#) » PHILIPS 243B1 B Line Smart LED Display User Guide 

Contents

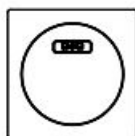
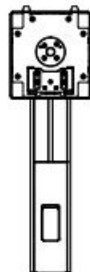
- [1 PHILIPS 243B1 B Line Smart LED Display](#)
- [2 WHAT'S IN THE BOX](#)
- [3 INSTALLATION](#)
- [4 Documents / Resources](#)
 - [4.1 References](#)
- [5 Related Posts](#)

PHILIPS

PHILIPS 243B1 B Line Smart LED Display



WHAT'S IN THE BOX



Power



*HDMI



*DP



*USB C-C



*USB C-A



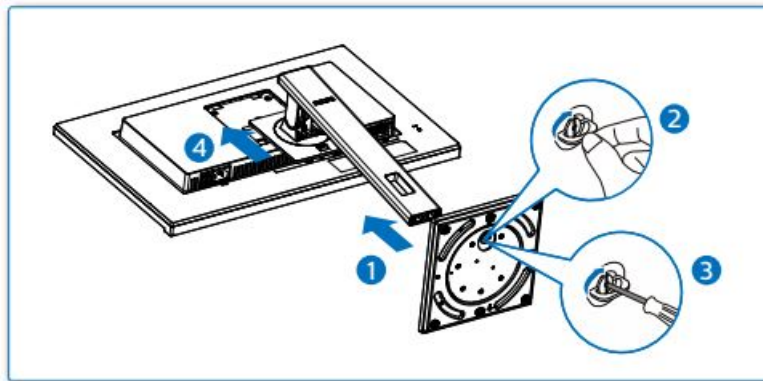
*USB C-C/A

*Different according to region

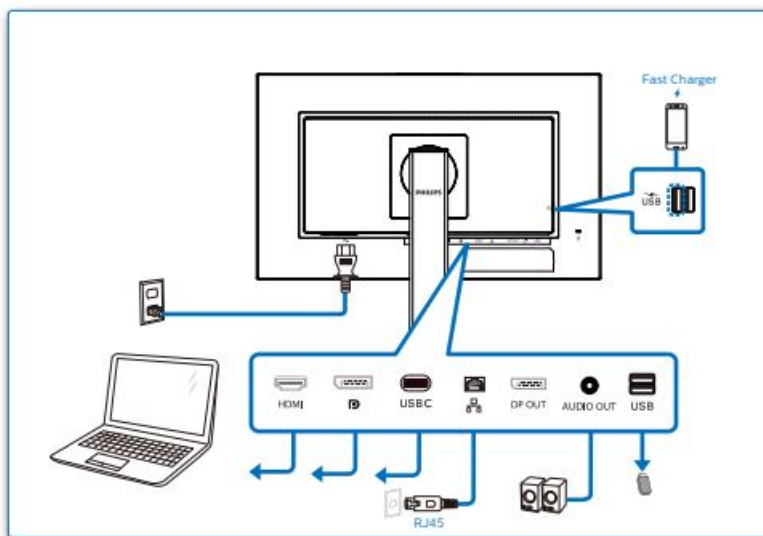
Display design may differ from that illustrated

INSTALLATION

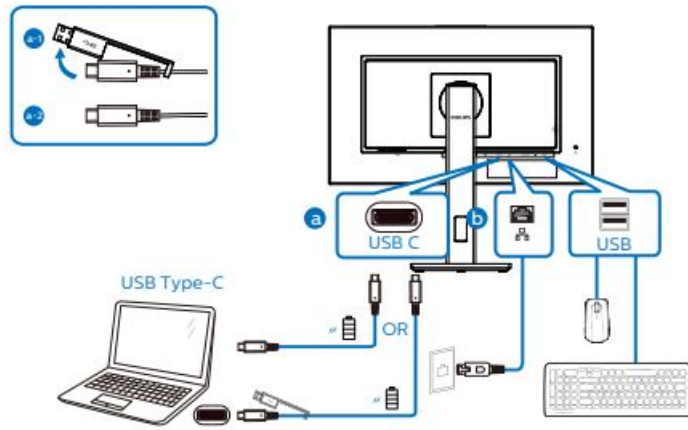
1



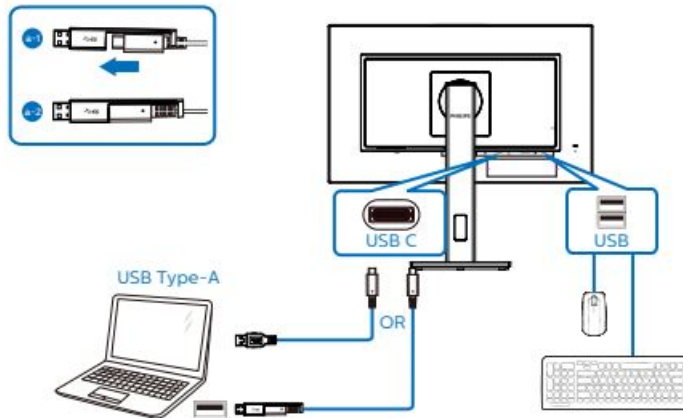
2



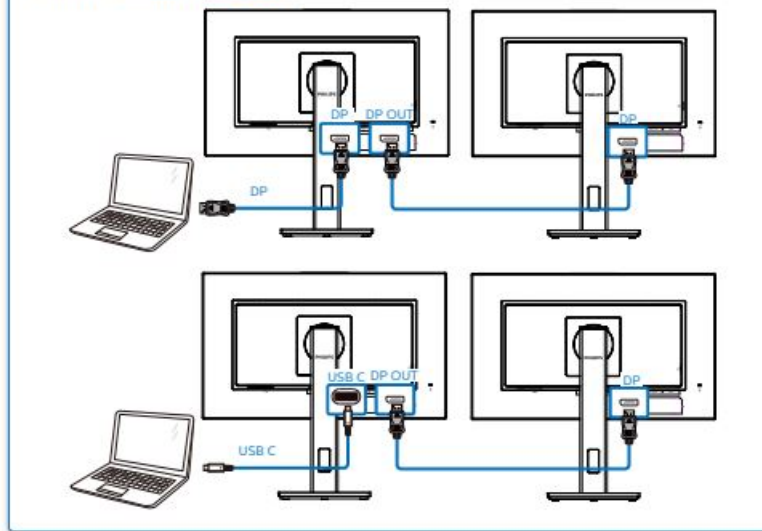
USB docking (USB C-C)



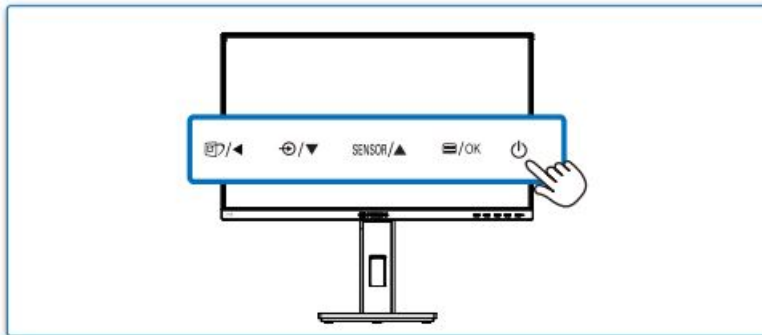
USB A-C

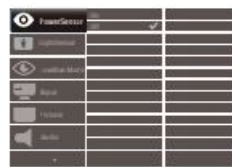


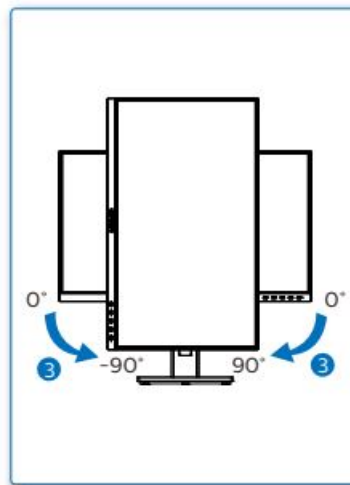
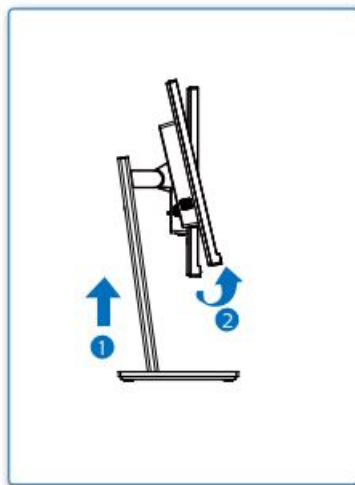
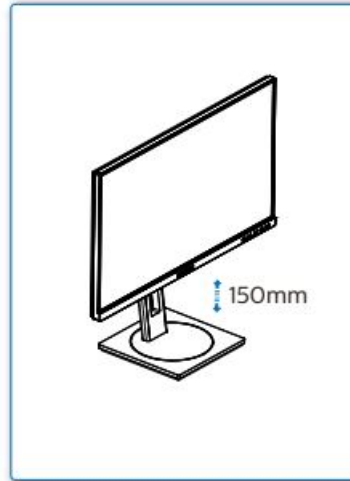
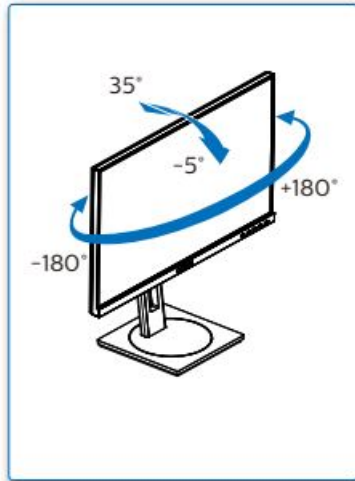
Multi-stream transport



3





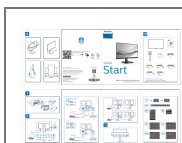


Version: M10243BQ1T

2021 © TOP Victory Investments Ltd. All rights reserved. This product has been manufactured by and is sold under the responsibility of Top Victory Investments Ltd., and Top Victory Investments Ltd. is the warrantor in relation to this product. Philips and the Philips Shield Emblem have registered trademarks of Koninklijke Philips N.V. and are used under license. Specifications are subject to change without notice. The terms HDMI, HDMI High-Definition Multimedia Interface, and the HDMI Logo are trademarks or registered trademarks of HDMI Licensing Administrator, Inc

www.philips.com

Documents / Resources



PHILIPS 243B1 B Line Smart LED Display [pdf] User Guide
243B1 B Line Smart LED Display, 243B1, B Line, Smart LED Display

References

- [!\[\]\(71ac35c616fd8bfda805d579390e24d8_img.jpg\) Philips - United States | Philips](#)
- [!\[\]\(b10a8b91056068472be58f587e00cb47_img.jpg\) Philips Customer Service Support - Home | Philips](#)
- [!\[\]\(26a0aa65ffdf9b4c0922ec277970eeda_img.jpg\) Product registration | Philips](#)

Manuals+.