

PHILIPS

222B9 LCD
Monitor with
Smooth Touch



PHILIPS 222B9 LCD Monitor with Smooth Touch User Guide

[Home](#) » [Philips](#) » PHILIPS 222B9 LCD Monitor with Smooth Touch User Guide 

Contents

- [1 PHILIPS 222B9 LCD Monitor with Smooth Touch](#)
- [2 Introduction](#)
- [3 Package Contents](#)
- [4 Setup Instructions](#)
- [5 FAQ](#)
- [6 Documents / Resources](#)
 - [6.1 References](#)
- [7 Related Posts](#)

PHILIPS

PHILIPS 222B9 LCD Monitor with Smooth Touch



Introduction

Register your product and get support at www.philips.com/support.

- FAQ
- Software SmartControl
- User Manual

Specifications

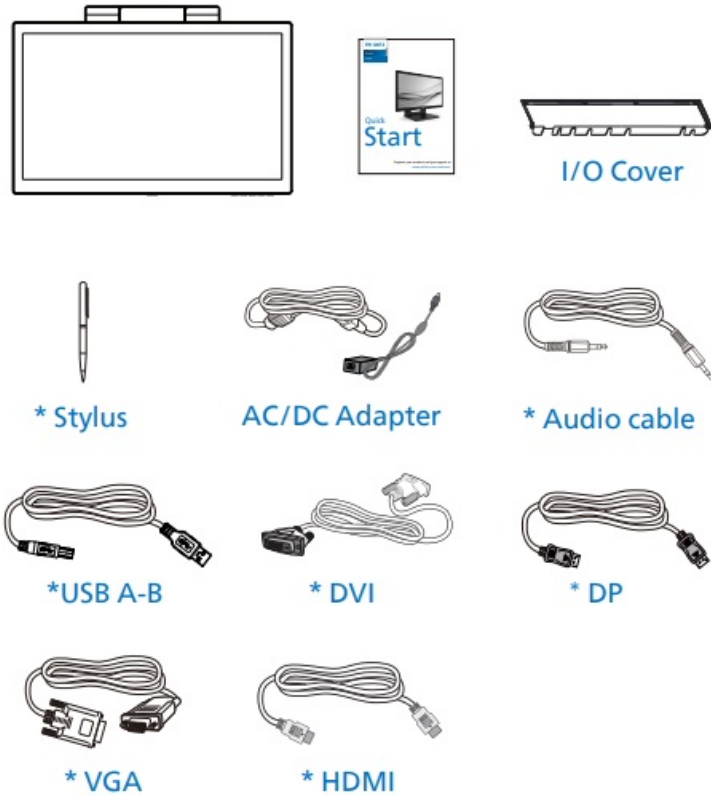
Version	M92224BQ1WWT
Energy Labelling	222B9T, 242B9T, 242B9TL
Manufactured by	Top Victory Investments Ltd.
Trademarks	Philips and the Philips Shield Emblem, HDMI

Specifications are subject to change without notice.

Package Contents

- Monitor
- I/O Cover
- * Stylus
- AC/DC Adapter
- * Audio cable

- * USB A-B
- * DVI
- * DP
- * VGA
- * HDMI



***Different according to region.**

Display design may differ from that illustrated.

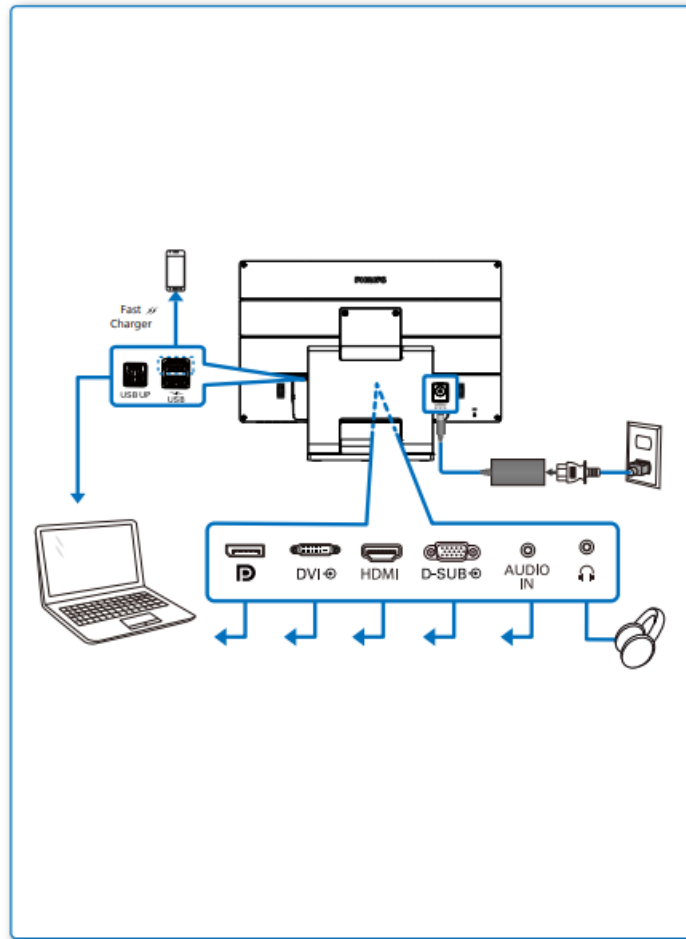
Setup Instructions

1. Connection Setup

Connect the monitor to your computer using the appropriate cables (VGA, HDMI, DVI, DP). Ensure the power cable is connected to the AC/DC adapter and plugged into a power source.

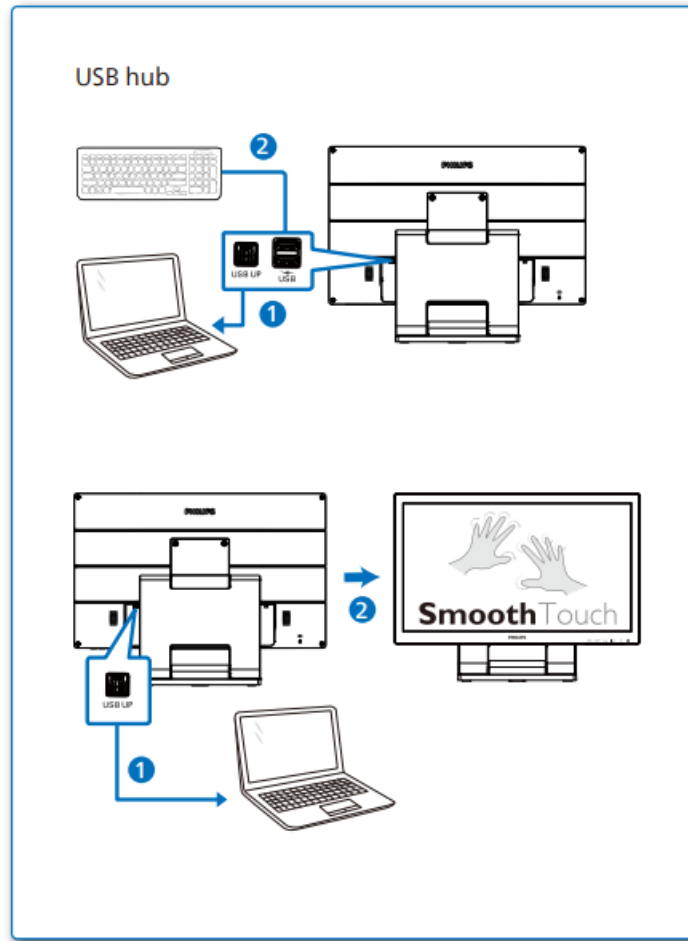
2.

1



USB Hub

Connect your devices to the USB hub on the monitor. Ensure the USB A-B cable is connected between the monitor and your computer.



3. Monitor Stand Adjustment

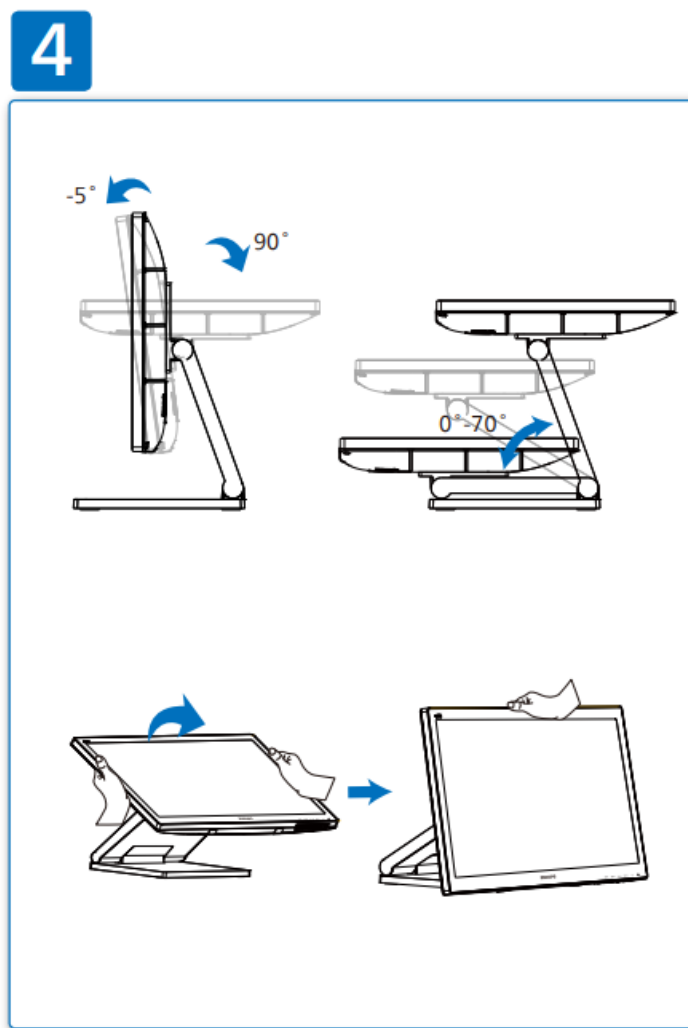
Adjust the monitor stand to a comfortable viewing angle. The stand can tilt between -5° and 90° and swivel between -70° and 70° .

3



4. Power On

Press the power button to turn on the monitor. Use the control buttons to navigate settings.



Register your product and get support at
www.philips.com/support



FAQ



Software
SmartControl



User
Manual

www.philips.com/support

Version: M92224BQ1WWT 2024 © TOP Victory Investments Ltd. All rights reserved.

This product has been manufactured by and is sold under the responsibility of Top Victory Investments Ltd., and Top Victory Investments Ltd. is the warrantor in relation to this product. Philips and the Philips Shield Emblem are registered trademarks of Koninklijke Philips N.V. and are used under license. Specifications are subject to change without notice.



The terms HDMI, HDMI High-Definition Multimedia Interface, HDMI Trade Dress and the HDMI Logos are trademarks or registered trademarks of HDMI Licensing Administrator, Inc. www.philips.com

FAQ

1. How do I register my product?

Visit www.philips.com/welcome to register your product.

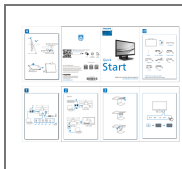
2. Where can I find the user manual?

The user manual is available at www.philips.com/support.

3. What should I do if the display design differs?

Display design may vary by region. Refer to the user manual for more details.

Documents / Resources



[PHILIPS 222B9 LCD Monitor with Smooth Touch](#) [pdf] User Guide
242B9TL-00, 242B9T-00, 222B9 LCD Monitor with Smooth Touch, 222B9, LCD Monitor with Smooth Touch, Monitor with Smooth Touch, Smooth Touch

References

- [Philips - United States | Philips](#)
- [Philips Customer Service Support - Home | Philips](#)
- [User Manual](#)

[Manuals+](#), [Privacy Policy](#)

This website is an independent publication and is neither affiliated with nor endorsed by any of the trademark owners. The "Bluetooth®" word mark and logos are registered trademarks owned by Bluetooth SIG, Inc. The "Wi-Fi®" word mark and logos are registered trademarks owned by the Wi-Fi Alliance. Any use of these marks on this website does not imply any affiliation with or endorsement.