



PHILIPS 2000 Series Computer Monitor User Guide

[Home](#) » [Philips](#) » PHILIPS 2000 Series Computer Monitor User Guide 

PHILIPS

**Monitor
2000 Series**



**24E1N2100A
27E1N2100A
24E1N2100AW
27E1N2100AW
Quick Start**

Register your product and get support at www.philips.com/welcome

Contents

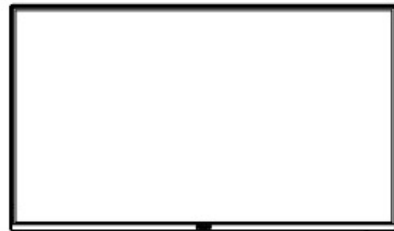
1 Contents

2 Documents / Resources

2.1 References



Contents



Power



HDMI



VGA

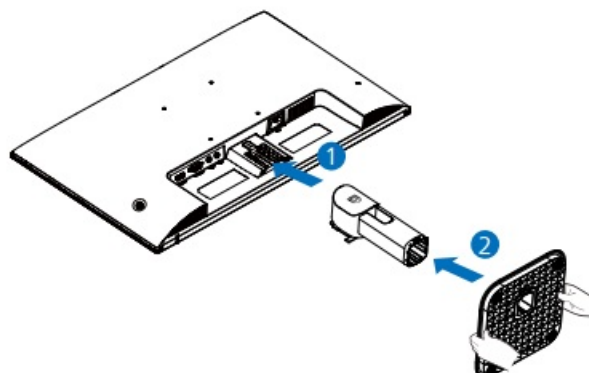


Audio

The images shown are for illustrative purposes only.

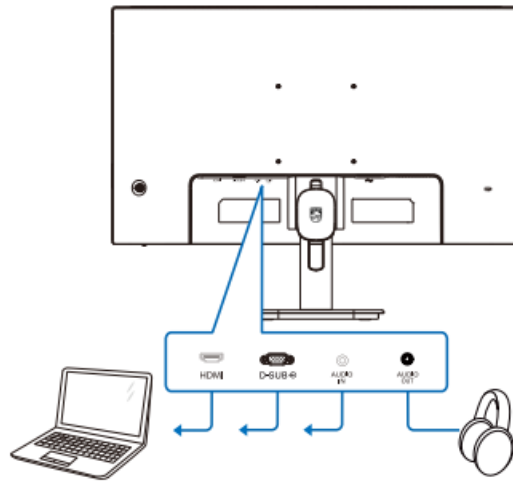
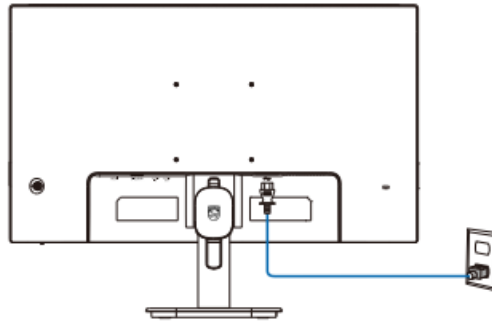
Actual product and accessory may vary by country or regions. Actual product and accessory shall prevail in kind.

1

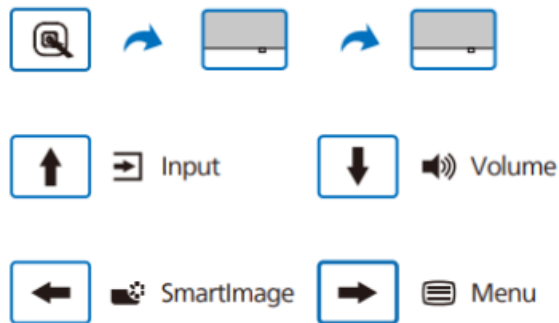
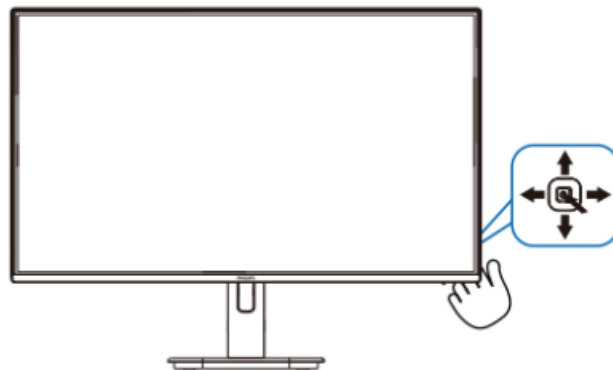


CAUTION: Place the monitor face down on a smooth surface.
Pay attention not to scratch or damage the screen.

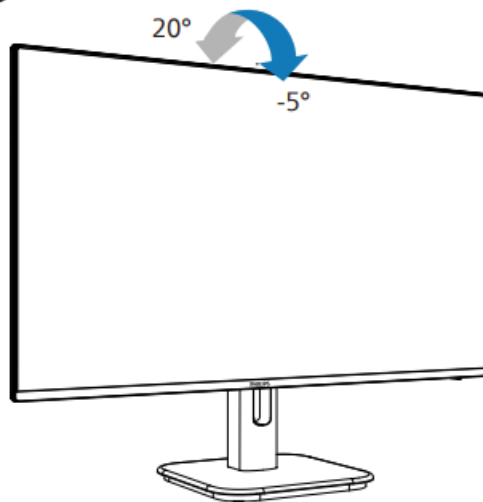
2



3



4



Register your product and get support at www.philips.com/support



FAQ



Software



User Manual

<http://www.philips.com/support>

Version: 2XE1N2100AQ1L

2025 © TOP Victory Investments Ltd. All rights reserved.

This product has been manufactured by and is sold under the responsibility of Top Victory Investments Ltd., and Top Victory Investments Ltd. is the warrantor in relation to this product.

Philips and the Philips Shield Emblem are registered trademarks of Koninklijke Philips N.V. and are used under license.

Specifications are subject to change without notice.

HDMI®

The terms HDMI, HDMI High-Definition Multimedia Interface, HDMI Trade Dress and the HDMI Logos are trademarks or registered trademarks of HDMI Licensing Administrator, Inc.

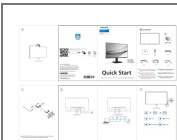
www.philips.com

Printed in China



F41G24S1813-1A----

Documents / Resources



[PHILIPS 2000 Series Computer Monitor](#) [pdf] User Guide
2000 Series Computer Monitor, 2000 Series, Computer Monitor, Monitor

References

-  [Philips - United States | Philips](#)
-  [Login](#)
- [User Manual](#)

[Manuals+](#), [Privacy Policy](#)

This website is an independent publication and is neither affiliated with nor endorsed by any of the trademark owners. The "Bluetooth®" word mark and logos are registered trademarks owned by Bluetooth SIG, Inc. The "Wi-Fi®" word mark and logos are registered trademarks owned by the Wi-Fi Alliance. Any use of these marks on this website does not imply any affiliation with or endorsement.