



PHEANOO D2 Soundbar with Subwoofer User Guide

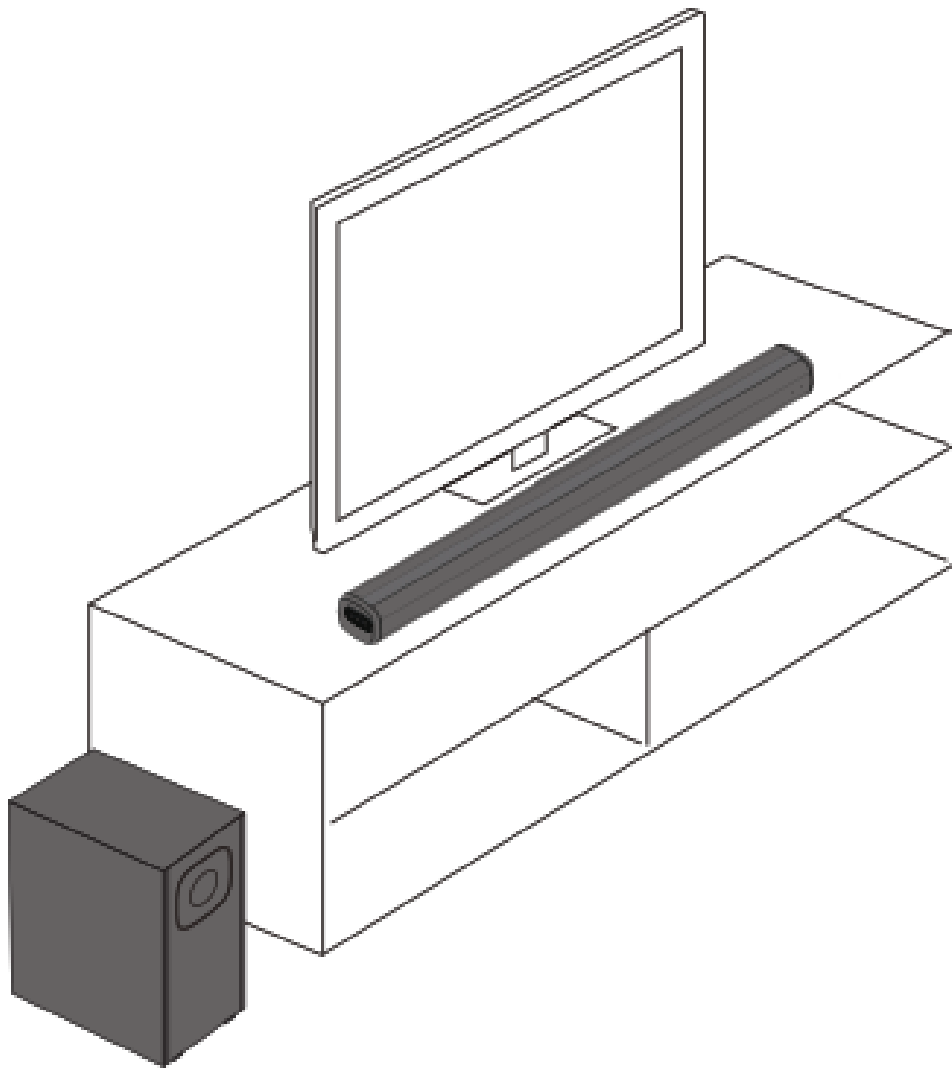
[Home](#) » [PHEANOO](#) » PHEANOO D2 Soundbar with Subwoofer User Guide 

Contents

- [1 Setup Guide Model: D2](#)
- [2 D2 Soundbar with Subwoofer](#)
- [3 Soundbar & accessories](#)
- [4 Other Connection Methods](#)
- [5 Documents / Resources](#)
 - [5.1 References](#)
- [6 Related Posts](#)



Setup Guide
Model: D2

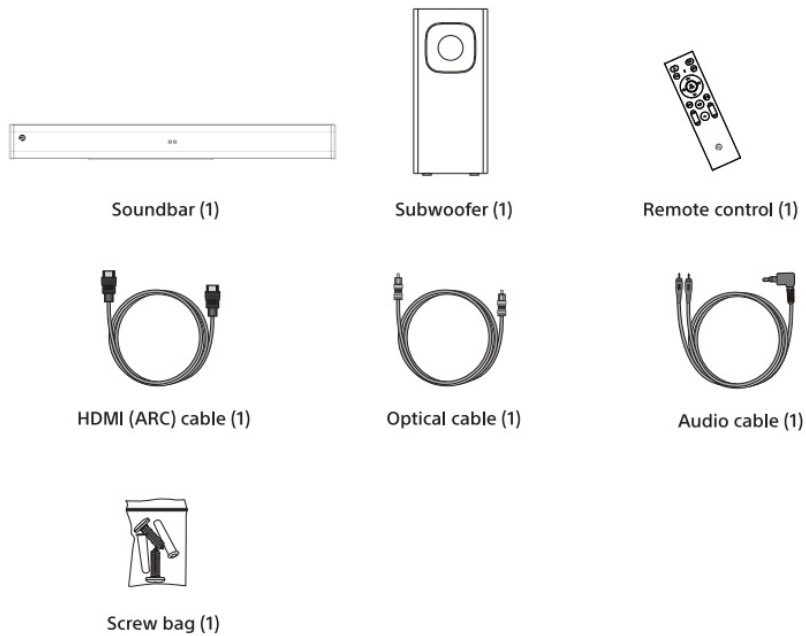


D2 Soundbar with Subwoofer

Please read this guide carefully before connecting and using your soundbar and keep it for future reference.

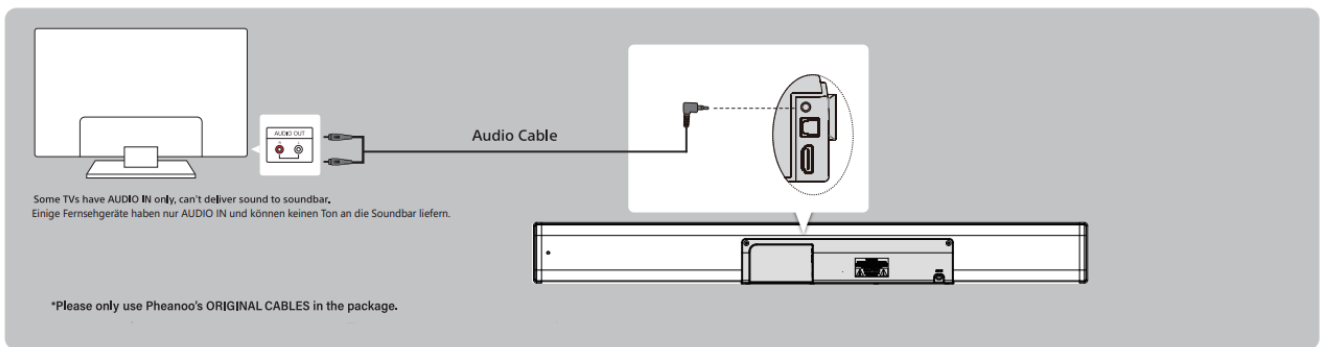
Soundbar & accessories

1.



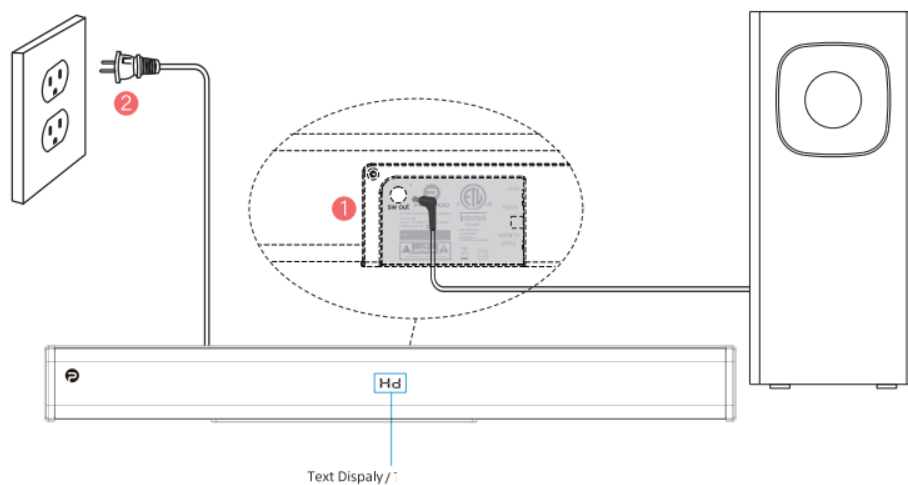
HDMI(ARC) Cable **Connection**

2.



Power on the Soundbar

3.



Turning on the Soundbar

4.

1



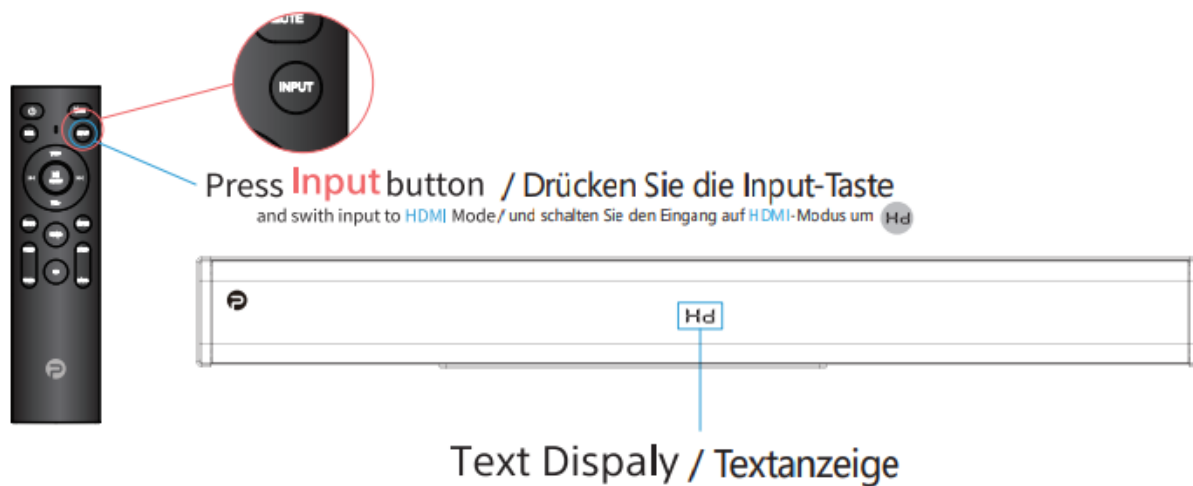
2



• For shipping safety, the batteries for the remote control are not included. The remote control takes two AAA batteries (triple A).

Soundbar Sound Input Setting

5.



-HDMI mode /



-AUX mode /



-Optical mode /



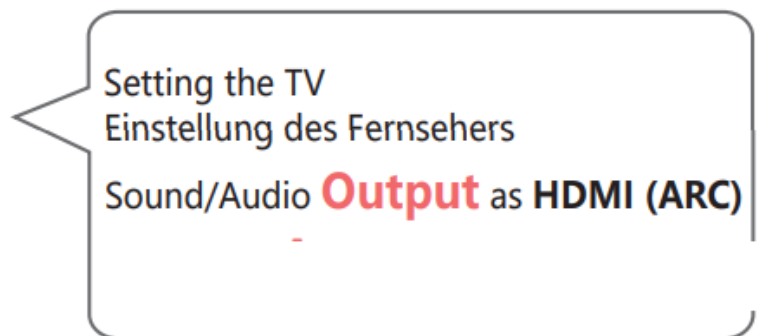
-Bluetooth Pairing mode /

Turning on the TV

6.



TV Sound Audio Output Setting TV-Ton



You can browse “bit.ly/P27TVST” to find more details about TV Sound/ Audio Output Settings.



<https://youtu.be/HIEC4Nhlwvo>

Video of “TV Sound/Audio Output Settings”

- The sound settings of different brands of TV may be different, please refer to the TV manual.

Notice

1. Make sure that the TVs Audio output selected is the same one selected on the soundbar.

TV Audio Settings Einstellungen f u r den TV-Audioausgang

HDMI	
Optical	
Bluetooth	
Aux	

Soundbar Audio Settings Soundbar Audioeingangs-Einstellungen to

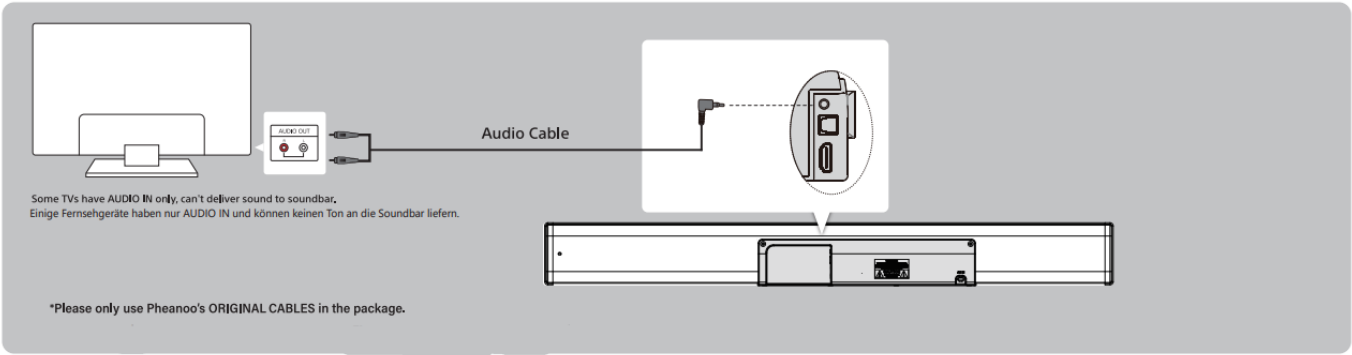
HDMI	Hd
Optical	OP
Bluetooth	bt
Aux	AU

- Do not place magnetic objects in, on, or around the soundbar as this may damage your soundbar.

Other Connection Methods

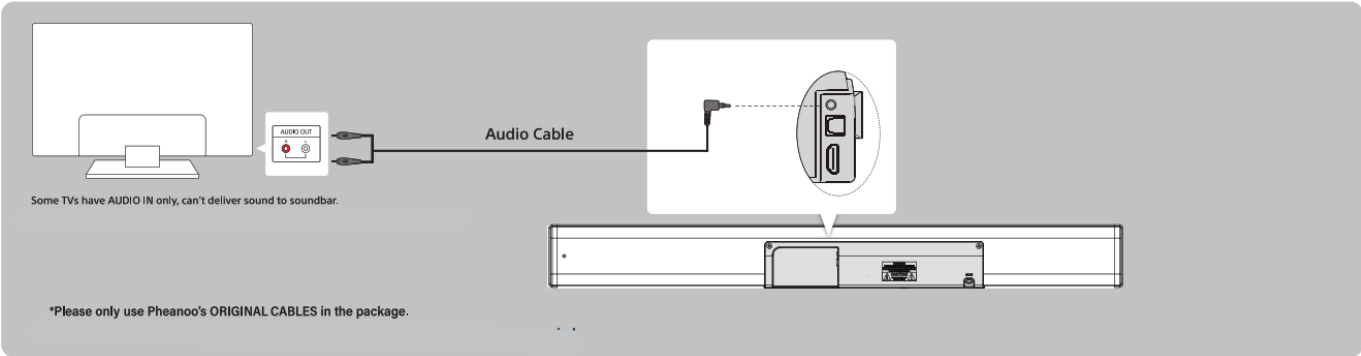
Optical Cable Connection

For other steps refer to the instructions on the previous page.

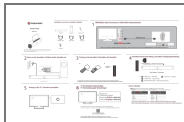


Audio Cable Connecting

For other steps refer to the instructions on the previous page.



Documents / Resources



[PHEANOO D2 Soundbar with Subwoofer](#) [pdf] User Guide
D2 Soundbar with Subwoofer, D2, Soundbar with Subwoofer

References

- [YouTube](#)

[Manuals+](#).